

InBrief Mid-Year Census 2012

Centre for Education Statistics and Evaluation

This Bulletin summarises the results of the census of students in NSW government schools on Friday 3 August 2012, and the census of NSW non-government schools undertaken by the Department of Education, Employment and Workplace Relations.

Top 5 Findings

- Kindergarten enrolments have increased for the last four years.
- Secondary enrolments have resumed the long-term downward trend, following a temporary increase in 2009 and 2010.
- Aboriginal Year 11 and Year 12 enrolments have increased for the last seven years at a faster rate than all students.
- The Year 10 to Year 12 apparent retention rate has fallen in 2012, however the Year 7 to Year 11 apparent retention rate continues the upward trend first observed in 2006.
- Government enrolment share continues a downward trend overall, but Primary enrolment share is steady in 2012.

Mid-Year Census

The Mid-year Census includes data on NSW Government schools (preschool, primary, secondary, combined, special) and students (age at 1 July, grades, full time, part time, gender, and Aboriginality).

The Census is used for state and federal planning and accountability, including reporting requirements under the NSW Education Act 1990 and the National Education Agreement 2012. Data contribute to the National School Statistics Collection (NSSC) which is collated by the Australian Bureau of Statistics (ABS) from state and territory student, school and staffing data. Preschool data contribute to the ABS Early Childhood Education and Care (ECEC) collection.

Figure 1
Government All Student Enrolments (FTE) by Scholastic Year, 2001, 2006 and 2012

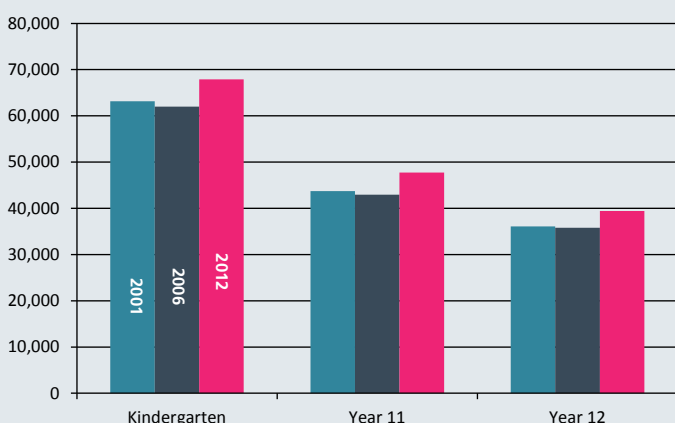
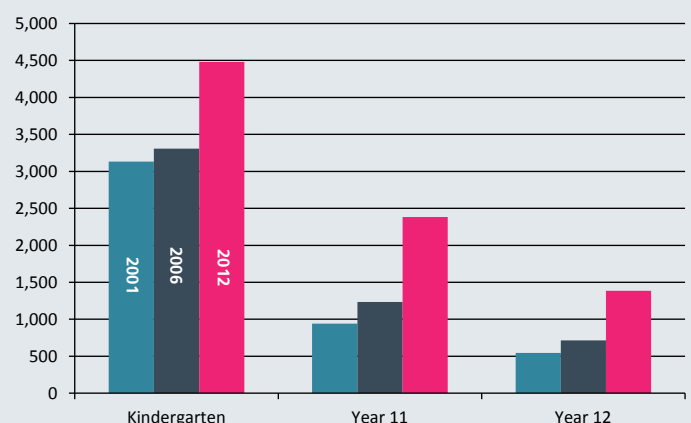


Figure 2
Government Aboriginal Student Enrolments (FTE) by Scholastic Year, 2001, 2006 and 2012



2012 InBrief Mid-Year Summary

NSW Government

Full-time equivalent (FTE) enrolments

Primary enrolments	438,681.0
Secondary enrolments	304,632.1
SSP enrolments	4,921.0
Total enrolments	748,234.1

Aboriginal and Torres Strait Islander students

Total A&TSI enrolments	47,086.8
Percent A&TSI enrolments	6.3%

Part-time students

Number of part-time students	2,288
FTE enrolments	1,360.1

Preschool students

Number of preschool students	4,424
FTE enrolments	2,460.7

NSW Non-Government

Full-time equivalent (FTE) enrolments

Primary enrolments	194,631.4
Secondary enrolments	196,124.8
Total enrolments	390,756.2

NSW government schools

Primary schools	1,605
Separate infants schools	17
Central/community schools	67
Secondary schools	398
Schools for specific purposes (SSP)	113
Environmental education centres (EEC)	23
Total government schools	2,223
Preschool attached to primary/infants schools	99
Separate preschools	1
Total preschools	100

NSW non-government schools

Primary schools	490
Secondary schools	145
Primary/secondary schools	237
Special schools	41
Total non-government schools	913

2012 Enrolments

The total number of full-time equivalent (FTE) students in NSW government schools increased from 745,540.2 in 2011 to 748,234.1 in 2012. This is the fourth year of rising enrolments, after a sustained downward trend between 1998 and 2008.

Enrolments in NSW government schools are affected by a number of factors, including the population of school age, the participation rate and the enrolment share between government and non-government schools. For students of school age (6 to 16 inclusive) the participation rate is close to 100 per cent, however after this age it declines noticeably.

The largest increase in enrolments was in Year 1 where enrolments rose by 4.0 per cent from 62,279 students in 2011 to 64,771 in 2012. Kindergarten enrolments increased by 3.5 per cent, following rises of 1.6 per cent in 2009, 0.9 per cent in 2010 and 3.9 per cent in 2011.

Table 1

Enrolments (FTE) in NSW Government Schools, 1992-2012

Year	Primary	Secondary	SSP	Total
1992	444,059	308,752	4,041	756,852.0
1993	445,238	308,909.2	3,901	758,048.2
1994	445,599	306,716.6	3,798	756,113.6
1995	446,722	305,395.6	3,789	755,906.6
1996	450,465	306,823.3	3,749	761,037.3
1997	451,560	308,922.7	3,690	764,172.7
1998	452,565	309,136.7	3,673	765,374.7
1999	453,454	308,116.1	3,762	765,332.1
2000	454,363	303,681.1	3,792	761,836.1
2001	451,096	301,771.4	3,873	756,740.4
2002	447,897	302,988.0	3,915	754,800.0
2003	443,213	304,034.0	3,938	751,185.0
2004	438,677	302,849.6	3,981	745,507.6
2005	434,876	302,578.3	4,124	741,578.3
2006	432,660	303,622.0	4,133	740,415.0
2007	429,900	304,457.7	4,278	738,635.7
2008	428,331	303,055.7	4,392	735,778.7
2009	429,000	303,180.7	4,466	736,646.7
2010	430,177	307,291.2	4,673	742,141.2
2011	433,873	306,893.2	4,774	745,540.2
2012	438,681	304,632.1	4,921	748,234.1

Notes: Since 1993 some students have enrolled part-time. All enrolments are reported in full-time equivalent units (FTEs) and include full-time and part-time students.

Year 11 and 12 Enrolments

As Figures 1 and 2 show, enrolments in Years 11 and 12 were higher in 2012 than in 2006 and 2001. The increase in enrolments is particularly noticeable for Aboriginal students.

Figures 3 and 4 show enrolments since 2001. For all students, Year 11 enrolments increased from 2008 onwards as the new school leaving age, effective from January 2010, was publicised. However the impact of the new school leaving age legislation now seems to have diminished, as enrolments increased only slightly between 2011 and 2012, by 49.1 students (0.1 per cent). However Year 11 enrolments for Aboriginal students continued to rise, increasing by 227.0 (10.5 per cent) from 2,154.7 students in 2011 to 2,381.7 students in 2012.

The new school leaving age legislation had less impact on Year 12 enrolments. Many students turn 17 before the mid-year census in Year 12 and are able to leave school without enrolling in further education or finding work. However, Year 12 enrolments have increased by more than 10 per cent since 2006, and Aboriginal enrolments have increased by more than 90 per cent since 2006.

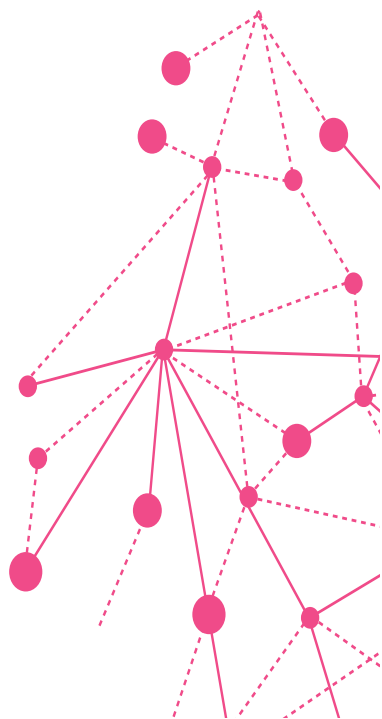


Table 2

Year 11 and 12 Enrolments (FTE) in NSW Government Schools, 2001-2012

Year	All Students		Aboriginal and Torres Strait Islander Students	
	Year 11	Year 12	Year 11	Year 12
2001	43,733.9	36,078.5	942.5	544.7
2002	43,625.3	37,079.7	959.8	588.0
2003	43,897.6	36,972.4	1,065.0	608.8
2004	42,661.0	37,133.6	1,089.3	680.4
2005	41,891.7	36,313.6	1,073.9	704.5
2006	42,925.7	35,792.3	1,233.7	714.9
2007	43,699.7	36,141.0	1,274.6	833.6
2008	42,912.2	36,652.5	1,401.7	897.0
2009	44,770.1	36,773.6	1,579.9	972.6
2010	46,660.9	38,487.3	1,805.7	1,087.9
2011	47,695.2	39,228.0	2,154.7	1,200.3
2012	47,744.3	39,412.8	2,381.7	1,384.1

Figure 3

Year 11 and 12 All Students Enrolments (FTE), 2001-2012

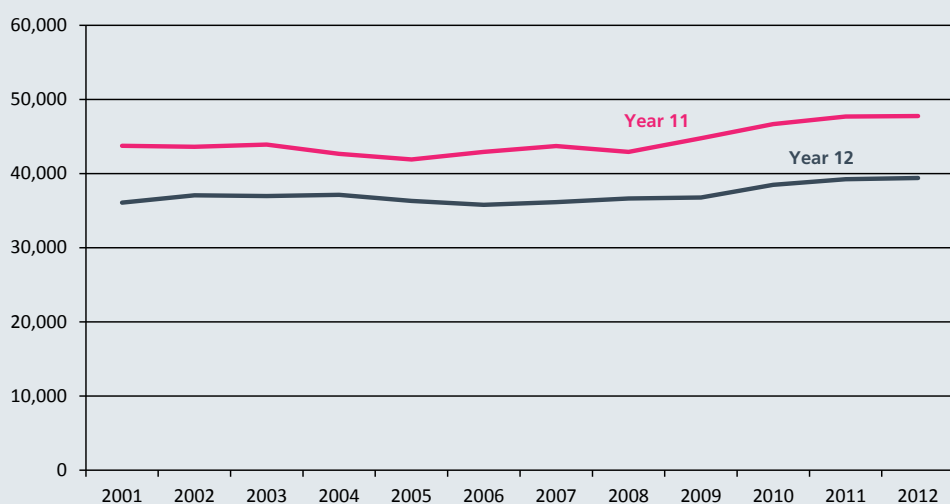


Figure 4

Year 11 and 12 Aboriginal Students Enrolments (FTE), 2001-2012

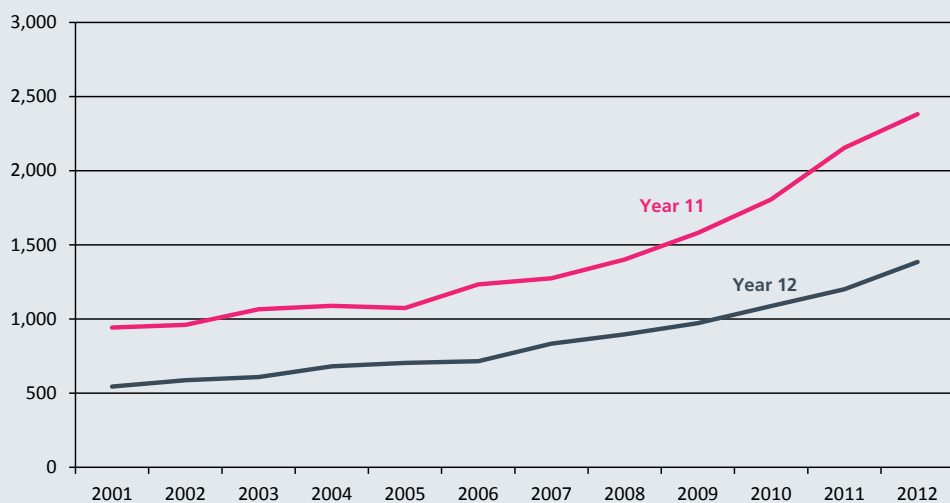


Table 3

Enrolments (FTE) by Region and Year of Schooling in NSW Government Schools, 2012

Region Name	Primary									SSP Total
	Kinder	Year 1	Year 2	Year 3	Year 4	Year 5	Year 6	Support	Total	
Hunter/Central Coast	9,248	8,948	8,661	8,359	8,365	8,399	8,726	737	61,443	675
Illawarra and South East	5,912	5,628	5,504	5,446	5,296	5,580	5,513	729	39,608	345
New England	1,962	1,897	1,768	1,688	1,743	1,691	1,668	172	12,589	107
North Coast	5,234	5,121	4,815	4,907	4,837	5,128	5,054	465	35,561	120
Northern Sydney	9,026	8,648	8,367	7,919	7,735	7,250	7,233	222	56,400	393
Riverina	2,827	2,707	2,620	2,635	2,542	2,509	2,661	102	18,603	245
South Western Sydney	11,520	11,052	10,585	10,509	10,321	10,034	10,429	1,480	75,930	1,366
Sydney	8,980	8,311	7,925	7,365	7,339	6,753	6,847	439	53,959	539
Western NSW	3,387	3,102	2,933	2,908	2,881	2,853	2,929	557	21,550	249
Western Sydney	9,781	9,357	8,842	8,728	8,354	8,434	8,382	1,160	63,038	882
State Total	67,877	64,771	62,020	60,464	59,413	58,631	59,442	6,063	438,681	4,921

Region Name	Secondary								Region Total	% of NSW
	Year 7	Year 8	Year 9	Year 10	Year 11	Year 12	Support	Total		
Hunter/Central Coast	8,114	7,994	8,271	8,137	6,623.7	5,120.9	1,033	45,293.6	107,411.6	14.4%
Illawarra and South East	4,754	4,952	4,974	5,032	4,185.6	3,478.7	941	28,317.3	68,270.3	9.1%
New England	1,680	1,595	1,787	1,631	1,389.8	1,080.0	229	9,391.8	22,087.8	3.0%
North Coast	4,896	5,013	5,011	5,160	4,436.7	3,472.6	734	28,723.3	64,404.3	8.6%
Northern Sydney	5,345	5,265	5,369	5,771	5,821.8	5,200.4	548	33,320.2	90,113.2	12.0%
Riverina	2,338	2,510	2,537	2,353	1,914.8	1,503.3	233	13,389.1	32,237.1	4.3%
South Western Sydney	8,361	8,352	8,925	9,390	8,515.1	7,338.2	2,251	53,132.3	130,428.3	17.4%
Sydney	5,831	5,783	5,935	6,315	6,117.5	5,378.0	853	36,212.5	90,710.5	12.1%
Western NSW	2,742	2,834	2,973	2,978	2,307.0	1,669.1	664	16,167.1	37,966.1	5.1%
Western Sydney	6,787	6,919	6,901	7,120	6,432.3	5,171.6	1,354	40,684.9	104,604.9	14.0%
State Total	50,848	51,217	52,683	53,887	47,744.3	39,412.8	8,840	304,632.1	748,234.1	100%

Students in Distance Education and Opportunity Classes (OC) are included with their appropriate grade levels. Students enrolled at the Distance Education Support Unit are included with secondary support classes in Sydney Region.

Enrolments (FTE) by region

Table 3 shows the enrolments for each scholastic year in each NSW government school region. South Western Sydney enrolled the most students in 2012, with 130,428.3 enrolments, which is 17.4 per cent of the state total.

Enrolments in the four Sydney regions account for 56 per cent of NSW's total enrolments.

Northern Sydney and Sydney saw the largest growth in student numbers with increases of over 1,200 enrolments between 2011 and 2012. The majority of the increase was in primary enrolments.

The North Coast experienced the largest decrease, down by 1,182 enrolments.

Both Kindergarten and Year 1 enrolments have experienced a 3 per cent or more increase from 2011. The Year 1 increase is mainly due to the progression of the large increase of Kindergarten enrolments in 2011.

Map 1
NSW Government Schools Enrolments (FTE) by Region, 2012

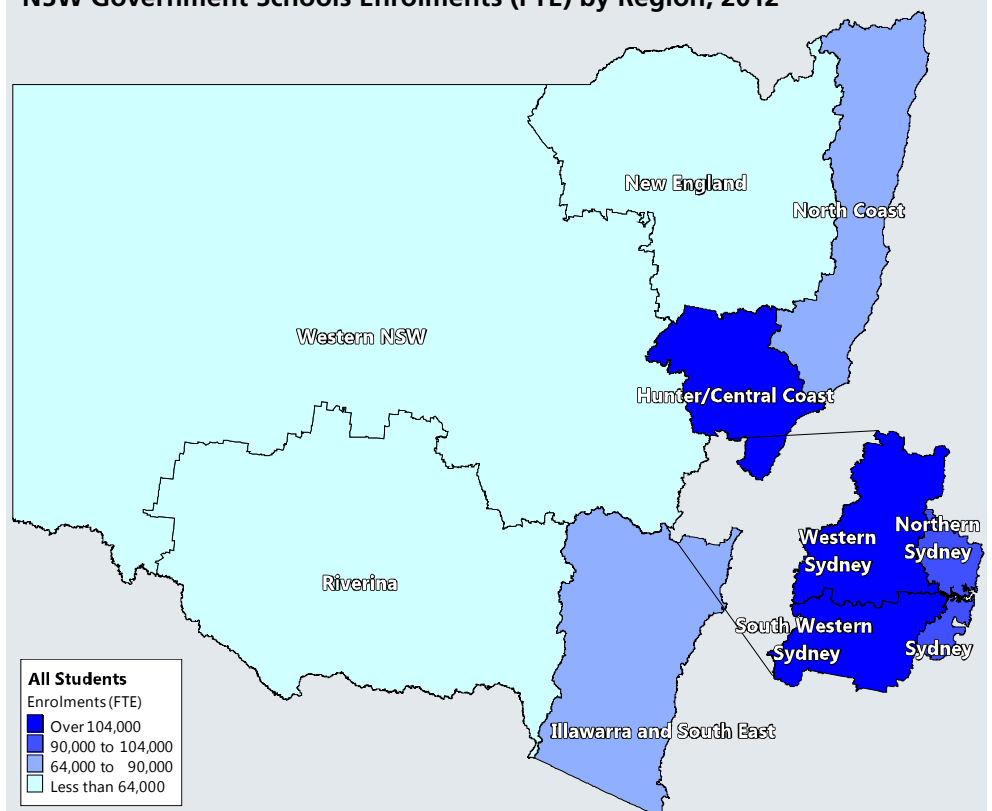


Table 4

Enrolments (FTE) of Aboriginal Students by Region and Year of Schooling in NSW Government Schools, 2012

Region Name	Primary								Total	SSP Total
	Kinder	Year 1	Year 2	Year 3	Year 4	Year 5	Year 6	Support		
Hunter/Central Coast	736	670	720	574	676	630	609	104	4,719	110
Illawarra and South East	456	438	395	374	371	363	379	136	2,912	36
New England	457	460	391	386	336	324	339	72	2,765	40
North Coast	685	635	588	579	565	560	588	124	4,324	45
Northern Sydney	33	31	32	36	31	31	24	4	222	6
Riverina	317	280	257	221	246	245	253	20	1,839	45
South Western Sydney	360	322	311	284	244	264	272	73	2,130	134
Sydney	159	167	169	153	129	140	134	19	1,070	49
Western NSW	792	698	627	606	595	595	563	188	4,664	58
Western Sydney	484	476	402	396	408	365	356	146	3,033	109
State Total	4,479	4,177	3,892	3,609	3,601	3,517	3,517	886	27,678	632
As percentage of Year	6.6%	6.4%	6.3%	6.0%	6.1%	6.0%	5.9%	14.6%	6.3%	12.8%

Region Name	Secondary							Total	Region Total	% of NSW
	Year 7	Year 8	Year 9	Year 10	Year 11	Year 12	Support			
Hunter/Central Coast	616	585	586	585	395.4	255.0	148	3,170.4	7,999.4	17.0%
Illawarra and South East	358	411	368	347	247.3	170.3	159	2,060.6	5,008.6	10.6%
New England	337	386	373	337	224.1	130.4	76	1,863.5	4,668.5	9.9%
North Coast	590	572	564	564	431.0	237.2	158	3,116.2	7,485.2	15.9%
Northern Sydney	24	26	29	30	19.6	13.8	3	145.4	373.4	0.8%
Riverina	258	231	214	204	127.8	59.8	30	1,124.6	3,008.6	6.4%
South Western Sydney	254	237	235	273	180.4	107.4	93	1,379.8	3,643.8	7.7%
Sydney	133	117	119	142	104.7	70.6	30	716.3	1,835.3	3.9%
Western NSW	603	585	602	626	402.2	213.4	276	3,307.6	8,029.6	17.1%
Western Sydney	335	355	347	338	249.2	126.2	142	1,892.4	5,034.4	10.7%
State Total	3,508	3,505	3,437	3,446	2,381.7	1,384.1	1,115	18,776.8	47,086.8	100%
As percentage of Year	6.9%	6.8%	6.5%	6.4%	5.0%	3.5%	12.6%	6.2%	6.3%	

Students in Distance Education and Opportunity Classes (OC) are included with their appropriate grade levels. Students enrolled at the Distance Education Support Unit are included with secondary support classes in Sydney Region.

Aboriginal enrolments (FTE) by region

Table 4 shows enrolments of Aboriginal students for each scholastic year in each NSW government school region. As Map 2 illustrates, the highest enrolments are in Western NSW and Hunter/Central Coast regions.

The four Sydney regions account for only 23 per cent of total Aboriginal enrolments, with Northern Sydney only accounting for 0.8 per cent of NSW Aboriginal enrolments.

Enrolments of Aboriginal students have increased by 4.2 per cent from 45,184.0 in 2011 to 47,086.8 in 2012.

All regions have experienced an increase of Aboriginal enrolments between 2011 and 2012, with the Hunter/Central Coast seeing the largest increase, 6.3 per cent.

Map 2

NSW Government Schools Aboriginal Enrolments (FTE) by Region, 2012

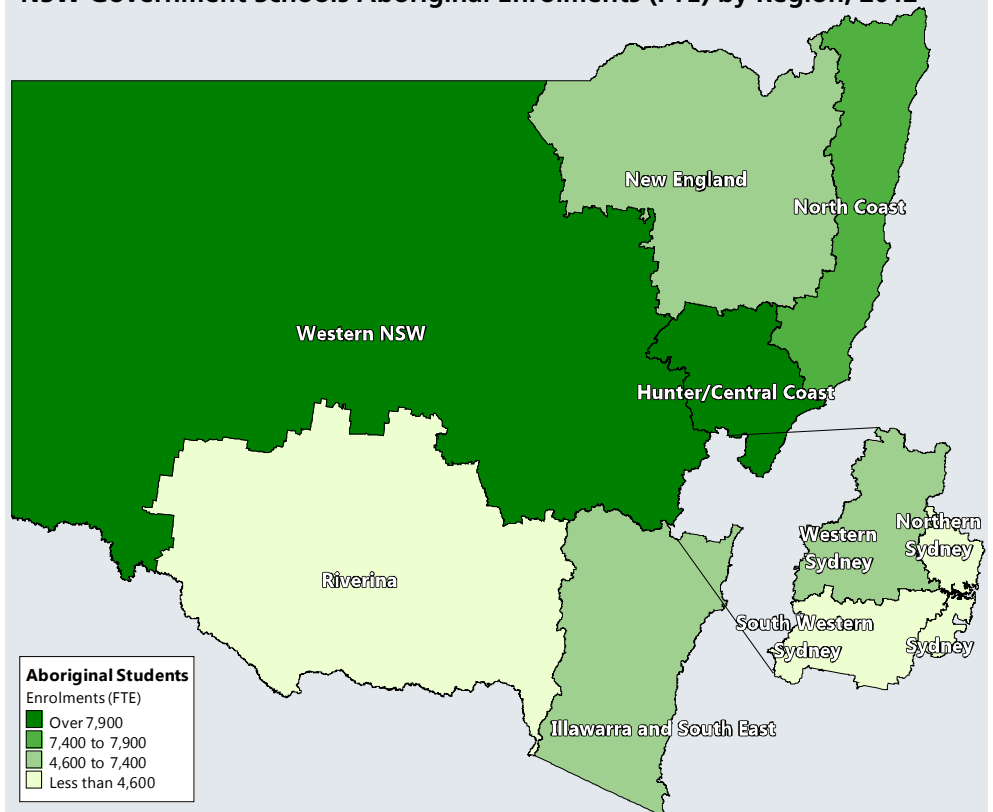


Table 5

Apparent Retention in NSW Government Schools, 2001-2012

Year	Years 7-10			Years 7-11			Years 7-12			Years 10-11			Years 10-12		
	Boys	Girls	Total	Boys	Girls	Total	Boys	Girls	Total	Boys	Girls	Total	Boys	Girls	Total
2001	95.2	95.7	95.4	72.6	81.4	76.9	58.0	69.3	63.5	77.1	85.5	81.3	61.5	72.1	66.7
2002	95.4	96.4	95.9	74.8	82.8	78.7	59.9	70.7	65.2	78.6	86.6	82.5	63.7	74.3	68.9
2003	95.8	96.3	96.0	75.2	84.6	79.8	61.7	71.9	66.7	78.8	87.7	83.2	64.8	75.2	69.9
2004	94.7	96.0	95.4	74.3	83.7	78.9	61.9	73.4	67.5	77.5	87.0	82.2	64.9	76.1	70.4
2005	94.8	95.4	95.1	72.5	83.2	77.7	61.5	73.0	67.2	76.5	86.6	81.4	64.2	75.9	69.9
2006	95.2	95.8	95.5	73.1	83.1	78.0	60.5	72.5	66.4	77.1	87.1	82.0	63.9	75.5	69.6
2007	96.0	96.6	96.3	73.9	83.8	78.7	60.0	71.5	65.7	77.6	87.5	82.4	63.3	75.0	69.1
2008	96.6	96.6	96.6	73.9	84.0	78.8	60.3	72.0	66.0	77.0	86.9	81.9	63.3	75.2	69.1
2009	95.6	97.4	96.5	77.3	85.1	81.1	61.5	73.9	67.6	80.0	88.1	84.0	64.1	76.5	70.2
2010	99.4	100.2	99.8	81.1	89.7	85.3	64.9	74.8	69.7	84.8	92.2	88.4	67.1	77.4	72.2
2011	102.2	102.4	102.3	83.3	91.3	87.2	66.1	77.6	71.7	83.7	91.1	87.3	69.1	79.7	74.3
2012	101.4	102.8	102.1	86.1	93.3	89.6	66.9	77.4	72.0	84.3	91.0	87.6	67.3	77.3	72.2

- Notes:
- All enrolments are reported in full-time equivalent units (FTEs), and include full-time and part-time students. Students enrolled in distance education classes are included with their appropriate grade levels.
 - Retention rates are 'apparent' as they do not track individual students through their final years of secondary schooling. What they measure is the ratio of the total number of full-time school students in a designated year (eg Year 12 in 2010) divided by the total number of full-time students in a previous year (eg Year 7 in 2005). This would be the Year 7 to 12 apparent retention rate in 2010. Apparent retention rates can exceed 100% due to a number of factors including migration of students from interstate and overseas and between school sectors.
 - Care should be taken in the interpretation of apparent retention rates, because they do not take account of factors such as migration, interstate movements of students, transfers to and from non-government schools, part-time schooling, students repeating a year of schooling, or students pursuing other education and training pathways.

Apparent retention

Apparent retention measures the proportion of students who remain at school through to Year 10, 11 or 12. Retention is affected by legal and policy changes, such as the new school leaving age legislation, and is one measure of students' engagement with education.

As Table 5 shows the apparent retention rate from Year 7 to Year 10 increased from 96.5 per cent in 2009 to 102.3

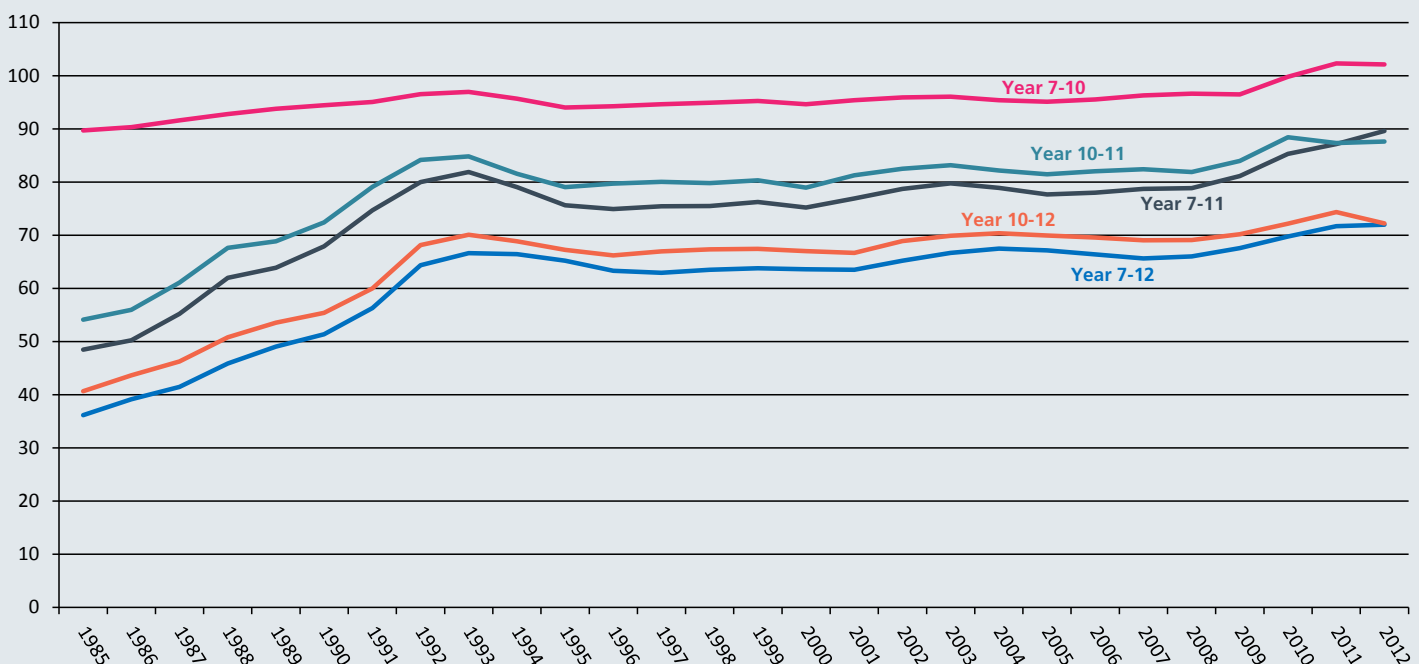
per cent in 2011, then declined slightly to 102.1 per cent in 2012. Apparent retention rates more than 100 per cent may be the result of migration from interstate or overseas or between school sectors.

The apparent retention rate from Year 7 to Year 12 increased slightly from 71.7 per cent in 2011 to 72.0 per cent in 2012, continuing the upward trend since 2007. Although there is only a small gender difference in apparent retention from

Year 7 to Year 10, girls are significantly more likely to remain at school until Year 12, with a Year 7 to Year 12 retention rate of 77.4 per cent in 2012 compared with only 66.9 per cent for boys.

The apparent retention rate from Year 10 to Year 12 dropped by 2.1 percentage points from 74.3 per cent in 2011 to 72.2 per cent in 2012. The 2012 rate remains higher than in 2008 (69.1 per cent) before the implementation of the new school leaving age legislation.

Figure 5
Apparent Retention (%) in NSW Government Schools, 1985-2012



With the legislation coming into effect in January 2010, the Year 12 cohort in 2012 is the first group of students who were required to complete Year 10. This means that the Year 10 enrolment figure was higher than in previous years, resulting in a relative decline in Year 10 to Year 12 apparent retention in 2012, despite the Year 7 to Year 12 apparent retention rate increasing slightly.

The biggest increase in apparent retention rate was observed from Year 7 to Year 11. The rate increased 2.4 percentage points from 87.2 per cent in 2011 to 89.6 per cent in 2012. This is the fourth successive year that this rate has increased by 2 or more percentage points.

Government enrolment share

Although total enrolments at NSW government schools increased for the fourth year in a row, the overall government enrolment share declined slightly from 66.0 per cent in 2011 to 65.7 per cent in 2012. This is because enrolments at non-government schools grew more quickly than government school enrolments.

Tables 6 and 7, and Figure 6 show the enrolment share for students at government schools in NSW. Between 2001 and 2004, the total government enrolment share fell by 0.5 percentage points each year.

Table 6

Enrolments (FTE) in NSW Government and Non-Government Schools, 1901-2012

Year	All Government		All Non-Government		Total
	Enrolments	Share	Enrolments	Share	
1901	210,588	77.6%	60,837	22.4%	271,425
1911	221,810	78.3%	61,550	21.7%	283,360
1921	315,228	80.1%	78,460	19.9%	393,688
1931	387,881	80.8%	92,285	19.2%	480,166
1941	337,073	76.2%	105,319	23.8%	442,392
1951	405,906	75.3%	133,019	24.7%	538,925
1961	610,883	75.2%	201,147	24.8%	812,030
1971	771,713	77.6%	222,195	22.4%	993,908
1981	790,575	76.9%	237,853	23.1%	1,028,428
1986	755,257	73.6%	270,745	26.4%	1,026,011
1991	746,417	72.0%	290,896	28.0%	1,037,313
1996	761,037	71.4%	305,383	28.6%	1,066,420
2001	756,740	68.7%	344,228	31.3%	1,100,968
2002	754,800	68.2%	351,455	31.8%	1,106,255
2003	751,185	67.7%	357,716	32.3%	1,108,901
2004	745,508	67.2%	363,090	32.8%	1,108,598
2005	741,578	66.9%	367,476	33.1%	1,109,054
2006	740,415	66.7%	369,902	33.3%	1,110,317
2007	738,636	66.5%	371,822	33.5%	1,110,458
2008	735,779	66.3%	374,171	33.7%	1,109,950
2009	736,647	66.2%	375,522	33.8%	1,112,169
2010	742,141	66.2%	378,289	33.8%	1,120,430
2011	745,540	66.0%	384,209	34.0%	1,129,749
2012	748,234	65.7%	390,756	34.3%	1,138,990

Source: Australian Bureau of Statistics, Schools Australia 2012

Notes: Government and non-government school data for 1901-1961 include students in ACT schools. From 1993 the table includes full-time and part-time students, reported in full-time equivalent units (FTEs).

Figure 6
NSW Government Enrolments (FTE) Share, 2001-2012



Table 7

Primary and Secondary Enrolments (FTE) in NSW Government and Non-Government Schools, 2001-2012

Year	Primary					Secondary				
	Government		Non-Government		Total	Government		Non-Government		Total
Enrols	Share	Enrols	Share	Enrols		Share	Enrols	Share		
2001	452,626.0	71.8%	177,761.1	28.2%	630,387.1	304,114.3	64.6%	166,466.9	35.4%	470,581.2
2002	449,482.0	71.4%	180,037.3	28.6%	629,519.3	305,318.0	64.0%	171,417.7	36.0%	476,735.7
2003	444,854.0	71.0%	181,653.8	29.0%	626,507.8	306,331.0	63.5%	176,062.5	36.5%	482,393.5
2004	440,309.0	70.5%	183,804.8	29.5%	624,113.8	305,198.6	63.0%	179,285.6	37.0%	484,484.2
2005	436,551.0	70.2%	185,459.0	29.8%	622,010.0	305,027.3	62.6%	182,016.7	37.4%	487,044.0
2006	434,366.0	70.0%	185,963.2	30.0%	620,329.2	306,049.0	62.5%	183,937.4	37.5%	489,986.4
2007	431,618.0	69.8%	186,878.4	30.2%	618,496.4	307,017.7	62.4%	184,943.5	37.6%	491,961.2
2008	430,057.0	69.6%	187,588.2	30.4%	617,645.2	305,721.7	62.1%	186,582.6	37.9%	492,304.3
2009	430,817.0	69.6%	187,990.1	30.4%	618,807.1	305,829.8	62.0%	187,531.9	38.0%	493,361.7
2010	432,060.0	69.5%	189,250.7	30.5%	621,310.7	310,081.2	62.1%	189,037.8	37.9%	499,119.0
2011	435,749.0	69.4%	191,706.4	30.6%	627,455.4	309,791.3	61.7%	192,502.5	38.3%	502,293.8
2012	440,549.0	69.4%	194,631.4	30.6%	635,180.4	307,685.1	61.1%	196,124.8	38.9%	503,809.9

Between 2004 and 2008 the rate of decline slowed to around 0.2 percentage points, before levelling off for two years. This may be due in part to the global financial crisis and reflects parents' perceived ability to pay for education. Since 2010 the enrolment share has resumed its long-term downward trend.

As Figure 6 shows, primary enrolment share is generally 7 to 8 percentage points higher than the secondary enrolment share. Since 2006, enrolment

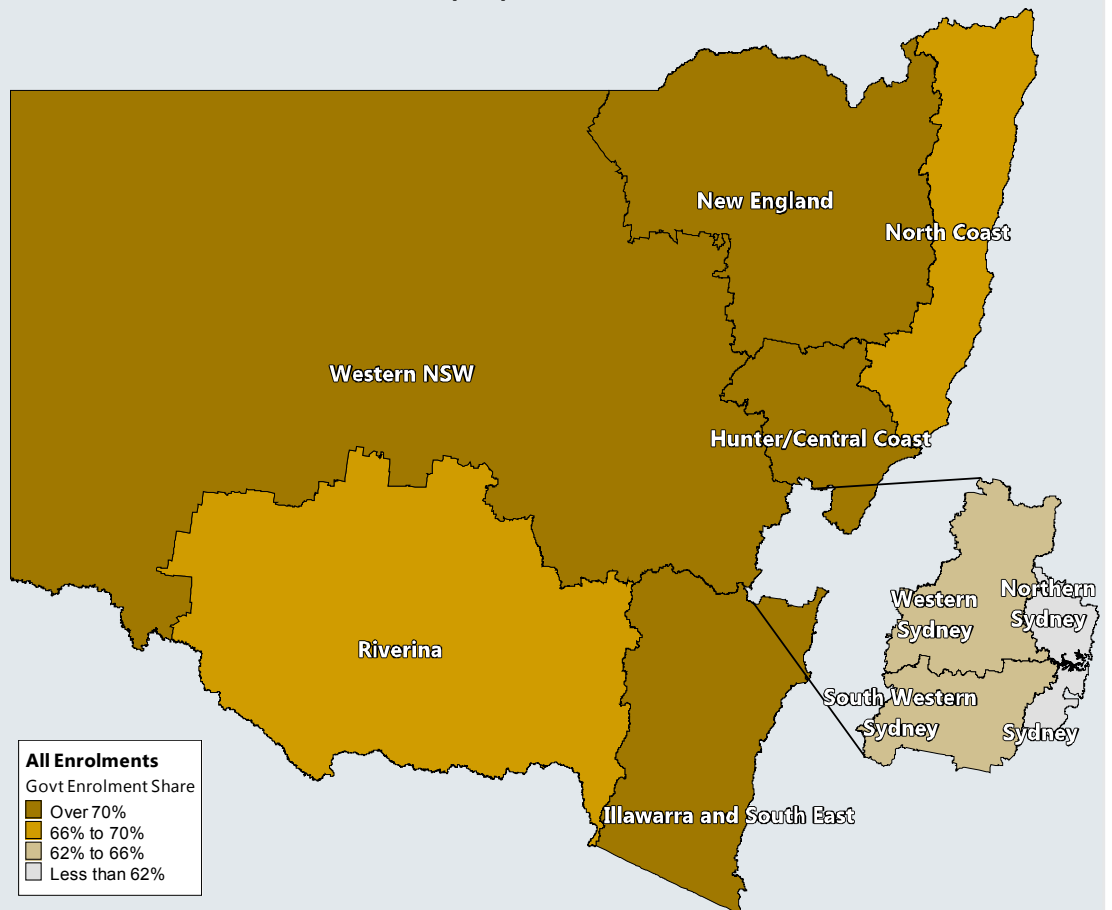
share for students in Kindergarten to Year 2 has diverged from the Year 3 to Year 6 enrolment share. In 2012, 68.8 per cent of older primary students attended government schools compared with 70.1 per cent of younger students.

Secondary enrolment share also varies depending on the age of the students. Junior secondary students (Years 7 to 10) follows the declining trend observed for all secondary students, while the

enrolment share for senior secondary students rose between 2008 and 2010. This was due to the raising of the school leaving age, which affected students enrolled in government schools more than their non-government peers.

As Map 3 shows, all Sydney metropolitan regions have a total enrolment share of 66 per cent or less, while the enrolment share in non-metro regions is over 66 per cent, and generally over 70 per cent.

Map 3
NSW Government All Enrolments (FTE) Share 2012



Regions with high government enrolment share are mainly located outside the Sydney metropolitan regions. The Sydney and Northern Sydney regions have the lowest government enrolment share in NSW: less than 62%.

The number of non-government schools that offer secondary education increased by 38 since 2001. The number of government schools that offer secondary education decreased by 8 over the same period.

Non-government enrolments (FTE)

Table 8 shows the number of government and non-government schools offering primary and secondary education. While there has been a small decrease in the number of government schools between 2001 and 2012 due to localised changes in the population of school age, the number of non-government secondary schools has increased by 11 per cent since 2001.

Table 9 shows the number of enrolments at non-government schools in NSW for each scholastic year. The highest enrolment figure is for Year 7, where more than 36,000 students attend a non-government school.

Table 8

Number of Schools offering Primary and Secondary Education, 2001-2012

Year	Government		Non Government	
	Primary	Secondary	Primary	Secondary
2001	1,712	444	731	344
2002	1,714	437	728	351
2003	1,715	432	726	357
2004	1,718	434	730	359
2005	1,718	435	728	370
2006	1,711	437	728	372
2007	1,709	435	728	383
2008	1,708	435	729	384
2009	1,700	436	727	383
2010	1,696	436	730	382
2011	1,697	436	728	388
2012	1,689	436	727	382
2001-2012	-1.3%	-1.8%	-0.5%	11.0%

Source: Australian Bureau of Statistics, Schools Australia 2012; Table 35a.

Notes: Combined/central schools which have both K-6 and Yr7-10 enrolments are included in both the primary and secondary schools count.

Figure 7

Number of Schools offering Secondary Education by Sector, 2001-2012



Table 9

Enrolments (FTE) by Year of Schooling in NSW Non-Government Schools, 2012

Primary	Male	Female	Total
Kindergarten	14,654.8	13,956.0	28,610.8
Year 1	13,986.0	13,722.1	27,708.1
Year 2	13,522.6	13,260.0	26,782.6
Year 3	13,948.2	13,285.0	27,233.2
Year 4	13,696.2	13,386.0	27,082.2
Year 5	14,253.0	13,688.0	27,941.0
Year 6	14,316.9	13,694.0	28,010.9
Ungraded primary	1,022.0	240.6	1,262.6
Total Primary	99,399.7	95,231.7	194,631.4
Secondary	Male	Female	Total
Year 7 secondary	18,493.0	17,747.0	36,240.0
Year 8	17,606.0	17,287.0	34,893.0
Year 9	17,140.6	16,708.4	33,849.0
Year 10	16,828.9	16,569.4	33,398.3
Year 11	14,701.9	14,920.3	29,622.2
Year 12	13,401.4	14,075.9	27,477.3
Ungraded secondary	455.8	189.2	645.0
Total Secondary	98,627.6	97,497.2	196,124.8
Total, All Students	198,027.3	192,728.9	390,756.2

Source: Australian Bureau of Statistics, Schools Australia 2012

Notes: All enrolments are reported in full-time equivalent (FTEs) and include full-time and part-time students. 'Ungraded' refers to students who are not allocated to specific school years.

Government preschools

Enrolments in government preschools have increased slightly from 4,416 in 2011 to 4,424 in 2012. FTE enrolments have fallen by 24.2 (1 percentage point) from 2,484.9 in 2011 to 2,460.7, however this change is not significant.

While total FTE enrolments have been steady over the last eight years, at around 2,500 FTE students, Aboriginal FTE enrolments have gradually increased from 275.2 in 2006 to 379.9 in 2012. Aboriginal students now comprise 15.4 per cent of enrolments (FTE), compared with 11.3 per cent in 2006.

Early Intervention preschool students

Children enrolled in an Early Intervention class at a NSW government school were included in the Government School Census for the first time in 2012. Early Intervention classes provide early childhood education in a preschool setting for children with a disability.

A total of 743 students were enrolled in an Early Intervention class in 2012.

Table 10

Students in Government Preschools, Head Count and Full-Time Equivalence (FTE), 2001-2012

Year	All Students		Aboriginal and Torres Strait Islander Students		
	Students	FTE	Students	FTE	% of Total FTE
2001	4,077	2,389.2	261	184.0	7.7%
2002	3,902	2,271.4	362	235.0	10.3%
2003	3,784	2,164.9	348	218.5	10.1%
2004	3,770	2,203.0	284	196.5	8.9%
2005	4,307	2,481.6	434	275.4	11.1%
2006	4,273	2,444.7	422	275.2	11.3%
2007	4,239	2,422.6	404	262.3	10.8%
2008	4,285	2,516.9	409	269.5	10.7%
2009	4,291	2,455.5	491	317.7	12.9%
2010	4,325	2,498.6	493	315.1	12.6%
2011	4,416	2,484.9	507	328.7	13.2%
2012	4,424	2,460.7	599	379.9	15.4%

Table 11

Students in Government Early Intervention Programs, Head Count and Full-Time Equivalence (FTE), 2012

Year	All Students		Aboriginal and Torres Strait Islander Students		
	Students	FTE	Students	FTE	% of Total FTE
2012	743	151.9	68	13	8.6%



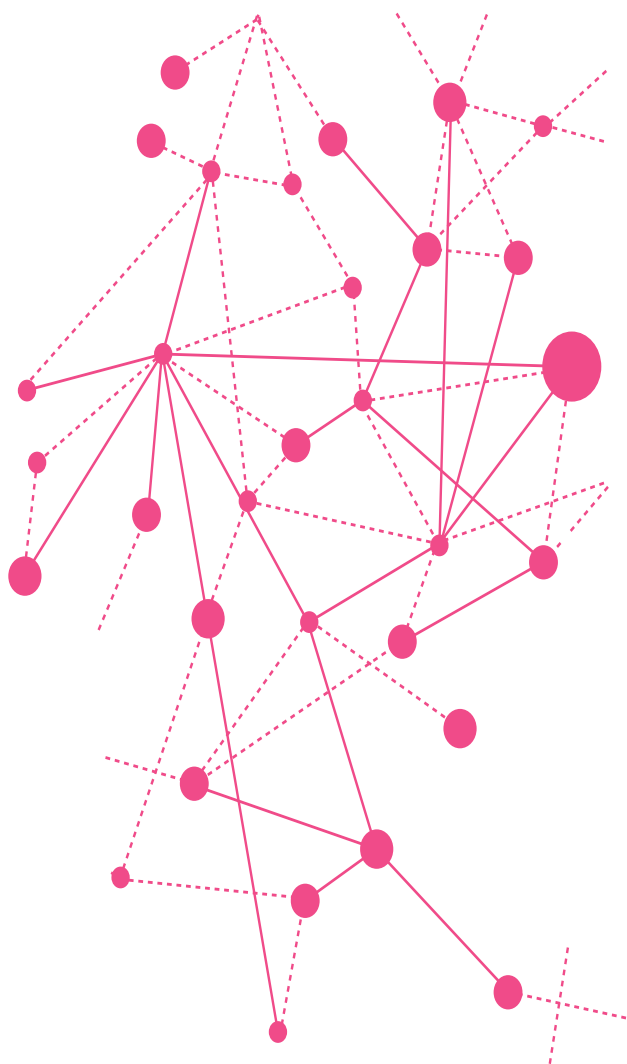
Notes:

Each year the Australian Bureau of Statistics releases full publications and datacubes of government and non-government school enrolments for all states and territories.

www.abs.gov.au

ABS publication details:

- 4221.0 - Schools Australia, 2012
- 4240.0 - Preschool Education Australia, 2012



Contact Details

For more information about the Centre for Education Statistics and Evaluation, please contact us:

E cese@det.nsw.edu.au

W www.cese.nsw.gov.au

Centre for Education Statistics and Evaluation
Office of Education
GPO Box 33
Sydney NSW 2001
Australia
T 02 9561 1220
E cese@det.nsw.edu.au
www.cese.nsw.gov.au

April 2013
NSW Department of Education and Communities

