

# 2012 Statistical Bulletin: Schools and students in NSW

Centre for Education Statistics and Evaluation



# 2012 Statistical Bulletin Summary

## NSW Government

### Full-time equivalent (FTE) enrolments

Primary enrolments	438,681.0
Secondary enrolments	304,632.1
SSP enrolments	4,921.0
<b>Total enrolments</b>	<b>748,234.1</b>

### Aboriginal and Torres Strait Islander students

Total Aboriginal & Torres Strait Islander enrolments	47,086.8
Percent Aboriginal & Torres Strait Islander enrolments	6.3%

### Part-time students (Year 11 and 12 only)

Number of part-time students	2,288
FTE enrolments	1,360.1

### Preschool students

Number of preschool students	4,424
FTE enrolments	2,460.7

### Students with language background other than English (LBOTE)

LBOTE enrolments	229,106
LBOTE enrolments as per cent of total enrolments	30.2%

### Attendance rate (Semester 1)

Primary (Years 1 - 6)	94.1
Secondary (Years 7 - 10)	89.3
<b>Years 1 - 10 (Including Support)</b>	<b>92.3</b>

### Average primary class size

Kindergarten to Year 6	24.0
------------------------	------

### HSC Year 12 student completions

HSC award	38,774
-----------	--------

### NSW government schools

Primary schools	1,605
Separate infants schools	17
Central/community schools	67
Secondary schools	398
Schools for specific purposes (SSP)	113
Environmental education centres (EEC)	23

### Total government schools

**2,223**

Preschool attached to primary/infants schools	99
Separate preschools	1

### Total preschools

**100**

## NSW Non-Government

### Full-time equivalent (FTE) enrolments

Primary enrolments	194,631.4
Secondary enrolments	196,124.8
<b>Total enrolments</b>	<b>390,756.2</b>

### NSW non-government schools

Primary schools	490
Secondary schools	145
Primary/secondary schools	237
Special schools	41
<b>Total non-government schools</b>	<b>913</b>

## Data Sources

The 2012 Statistical Bulletin reports NSW government schools data from:

- The census of students undertaken on Friday 3 August 2012.
- The census of students of language background other than English undertaken on Friday 9 March 2012.
- The K-6 Class Size Audit undertaken on Friday, 16 March 2012.
- The K-6 languages programs: includes languages programs (in school hours) collection undertaken in May 2012.
- The Years 7-9 language participation collection undertaken in August 2012.
- The Attendance collection undertaken in June 2012 for Semester 1.

The bulletin also includes non-government schools data which was collected by the Commonwealth Department of Education, Employment and Workplace Relations on Friday, 3 August 2012.

## Further Reference

Additional information about schools and students in NSW is available from the Centre for Education Statistics and Evaluation's (CESE) other statistical publications:

- CESE Bulletin Issue 1 - LBOTE, 2012
- CESE Bulletin Issue 2 - Class size, 2012
- CESE Bulletin Issue 3 - Attendance Semester 1, 2012
- CESE Bulletin Issue 4 - Mid-year Inbrief, 2012

The publications can be obtained from CESE's website:

<http://www.cese.nsw.gov.au/publications>

# Table of Contents

## List of Tables

### Schools

<b>Table 1</b> NSW government schools by classification, 2001-2012	5
<b>Table 2</b> NSW government schools by type and region, midyear 2012	7
<b>Table 3</b> NSW government schools by program and region, midyear 2012	7
<b>Table 4</b> List of college arrangements, midyear 2012	8
<b>Table 5</b> Secondary education schools by selective, specialist and coeducational status, midyear 2012	8

### Classes

<b>Table 6</b> Average primary class sizes by year, 1997 and 2002-2012	9
---	---

### Students

<b>Table 7</b> Enrolments (FTE) in NSW government schools, 1970, 1980, 1990, 1992-2012	10
<b>Table 8</b> Age-grade distribution of students in NSW government schools, midyear 2012 primary students by age and year of schooling (excluding support students)	11
<b>Table 9</b> Age-grade distribution of students in NSW government schools, midyear 2012 full-time, secondary students by age and year of schooling (excluding support students)	11
<b>Table 10</b> Age-grade distribution of students in NSW government schools, midyear 2012 part-time secondary students by age and year of schooling	13
<b>Table 11</b> Enrolments in support classes and schools for specific purposes (SSPs) by category, 2012	13
<b>Table 12</b> Age-grade distribution of students in NSW government schools, midyear 2012 students in schools for specific purposes (SSPs) by age and category	15
<b>Table 13</b> Age distribution of students in NSW government preschools and early intervention programs, midyear 2012	16
<b>Table 14</b> Enrolments (FTE) in distance education by year of schooling, midyear 2012	16
<b>Table 15</b> Enrolments (FTE) of Aboriginal students by region and year of schooling in NSW government schools, 2012	17

<b>Table 16</b>	<b>Enrolment of students of language background other than English (LBOTE) in NSW government schools, March 2012 by region and year of schooling</b>	<b>18</b>
<b>Table 17</b>	<b>Enrolments (FTE) in NSW government schools by program and region, midyear 2012</b>	<b>19</b>
<b>Study patterns</b>		
<b>Table 18</b>	<b>Primary students in NSW government schools studying a language other than English by year of schooling and language, May 2012</b>	<b>20</b>
<b>Table 19</b>	<b>Language participation Year 7-9 by gender and year of schooling, August 2012</b>	<b>21</b>
<b>Table 20</b>	<b>Course enrolments in Year 10 subjects in NSW government schools, 2012</b>	<b>22</b>
<b>Table 21</b>	<b>Course enrolments in Year 11 and Year 12 subjects in NSW government schools, 2012</b>	<b>25</b>
<b>Progress measures</b>		
<b>Table 22</b>	<b>Apparent retention in NSW government schools, 2001-2012</b>	<b>29</b>
<b>Table 23</b>	<b>NSW government school HSC completions, Year 12 students only, 2003-2012</b>	<b>30</b>
<b>Table 24</b>	<b>Student attendance rates by Aboriginality and year level, 2012</b>	<b>31</b>
<b>List of Figures</b>		
<b>Figure 1</b>	<b>NSW government schools by classification, 2001-2012</b>	<b>6</b>
<b>Figure 2</b>	<b>Primary and secondary enrolments (FTE) in NSW government schools, 2001-2012</b>	<b>10</b>
<b>Figure 3</b>	<b>Enrolments in NSW government schools by year of schooling and gender, midyear 2012</b>	<b>12</b>
<b>Figure 4</b>	<b>Enrolments in NSW government schools by age and gender, midyear 2012</b>	<b>12</b>
<b>Figure 5</b>	<b>Enrolments in support classes in ordinary schools and SSPs by category, midyear 2012</b>	<b>14</b>
<b>Figure 6</b>	<b>Apparent retention (%) in NSW government schools, 2001-2012</b>	<b>29</b>
<b>Figure 7</b>	<b>Number of HSC awards (all students) in NSW government schools, 2003-2012</b>	<b>30</b>

**Table 1**  
**NSW government schools by classification, 2001-2012**

Classification	2001	2002	2003	2004	2005	2006	2007	2008	2009	2010	2011	2012
<b>Primary and infants schools</b>												
Class 1	75	75	74	71	59	59	58	58	56	62	67	
Class 2	281	279	271	273	266	261	262	262	262	267	266	
Class 3	347	354	357	354	358	342	342	343	343	324	308	313
Class 4	351	346	346	351	348	377	375	381	383	391	393	377
Class 5	452	455	449	447	455	443	433	424	423	425	419	425
Class 6	124	122	134	136	137	145	155	156	147	154	164	157
Separate Infants	18	18	17	17	17	17	17	17	17	17	17	17
<b>Total</b>	<b>1,648</b>	<b>1,649</b>	<b>1,649</b>	<b>1,652</b>	<b>1,652</b>	<b>1,644</b>	<b>1,642</b>	<b>1,641</b>	<b>1,633</b>	<b>1,629</b>	<b>1,630</b>	<b>1,622</b>
<b>Central and community schools</b>												
Class 1	4	4	4	3	3	3	4	4	4	4	4	4
Class 2	12	10	10	11	9	10	9	9	9	7	6	7
Class 3	22	24	23	22	23	23	24	22	22	21	20	19
Class 4	22	22	23	24	25	25	24	26	26	29	31	31
Class 8	3	3	3	3	3	4	4	4	4	4	4	4
Class 9	2	2	3	3	3	2	2	2	2	2	2	2
<b>Total</b>	<b>65</b>	<b>65</b>	<b>66</b>	<b>66</b>	<b>66</b>	<b>67</b>	<b>67</b>	<b>67</b>	<b>67</b>	<b>67</b>	<b>67</b>	<b>67</b>
<b>Secondary schools</b>												
Class 8	146	143	138	139	142	141	134	132	132	139	138	140
Class 9	248	251	256	256	255	256	263	265	266	259	260	258
<b>Total</b>	<b>394</b>	<b>394</b>	<b>394</b>	<b>395</b>	<b>397</b>	<b>397</b>	<b>397</b>	<b>397</b>	<b>398</b>	<b>398</b>	<b>398</b>	<b>398</b>
<b>Other schools</b>												
Schools for Specific Purposes	95	106	106	108	108	108	114	114	113	113	113	113
Environmental Education Centres	23	23	23	23	23	23	23	23	23	23	23	23
<b>Total Schools</b>	<b>2,225</b>	<b>2,237</b>	<b>2,238</b>	<b>2,244</b>	<b>2,246</b>	<b>2,239</b>	<b>2,243</b>	<b>2,242</b>	<b>2,234</b>	<b>2,230</b>	<b>2,231</b>	<b>2,223</b>

**Classifications:**

Primary and infants schools:

- Class 1 - More than 700 enrolments
- Class 2 - 451 to 700 enrolments
- Class 3 - 301 to 450 enrolments
- Class 4 - 160 to 300 enrolments
- Class 5 - 26 to 159 enrolments
- Class 6 - Less than 26 enrolments

Central schools:

- Class 1 - More than 450 enrolments
- Class 2 - 301 to 450 enrolments
- Class 3 - 160 to 300 enrolments
- Class 4 - 26 to 159 enrolments

Community schools:

- Class 8 - More than 900 enrolments
- Class 9 - 900 or less enrolments

Secondary schools:

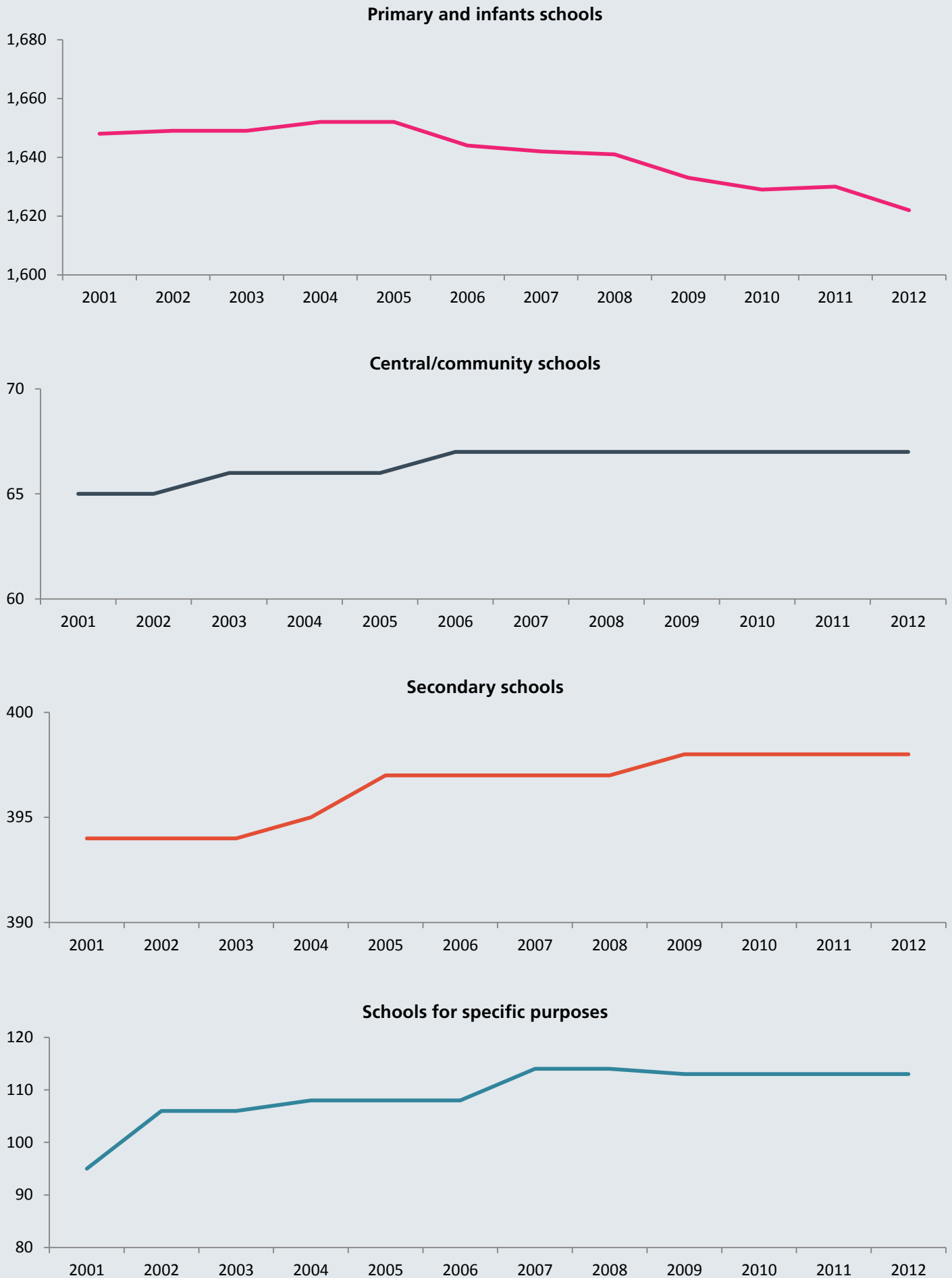
- Class 8 - More than 900 enrolments
- Class 9 - 900 or less enrolments

**Notes:**

- The classifications used in the table are not based on the 2012 actual enrolments collected through the mid-year census. The classifications are based on the staffing entitlement classifications reviewed periodically by the Classification Review Committee.
- See explanatory notes 1, 2 and 3.

**Figure 1**

**NSW government schools by classification, 2001-2012**



**Table 2**  
NSW government schools by type and region, midyear 2012

Region	Primary	Central / Community	Secondary	SSP	EEC	Total
Hunter/Central Coast	228	3	49	15	3	298
Illawarra and South East	178	3	37	8	2	228
New England	90	12	17	4	1	124
North Coast	221	8	39	4	2	274
Northern Sydney	117		37	12	2	168
Riverina	137	16	26	8	1	188
South Western Sydney	185		63	25	3	276
Sydney	158	2	48	16	3	227
Western NSW	132	23	31	5	3	194
Western Sydney	176		51	16	3	246
<b>Total</b>	<b>1,622</b>	<b>67</b>	<b>398</b>	<b>113</b>	<b>23</b>	<b>2,223</b>

**Notes:**

- Lucas Heights Community School, Hunter School of Performing Arts, Southern Cross School, Wadalba Community School, Alexandria Park Community School and Evans River Community School are included with Central/Community schools
- See explanatory notes 1, 2 and 3.

**Table 3**  
NSW government schools by program and region, midyear 2012

**Priority schools funding program**

Region	Primary	Central/ Community	Secondary	SSP	Total
Hunter/Central Coast	52	1	8	8	69
Illawarra and South East	34		8	2	44
New England	37	7	5	2	51
North Coast	106	5	10	1	122
Northern Sydney					
Riverina	32	3	3	5	43
South Western Sydney	66		32	13	111
Sydney	9	1	3	1	14
Western NSW	50	14	10	2	76
Western Sydney	32		11	5	48
<b>Total</b>	<b>418</b>	<b>31</b>	<b>90</b>	<b>39</b>	<b>578</b>

**Country area program**

Region	Primary	Central/ Community	Secondary	SSP	Total
Hunter/Central Coast	1				1
Illawarra and South East	29	1	4		34
New England	37	7	5	1	50
North Coast	5	2			7
Northern Sydney					
Riverina	46	10	6		62
South Western Sydney					
Sydney					
Western NSW	40	16	8		64
Western Sydney					
<b>Total</b>	<b>158</b>	<b>36</b>	<b>23</b>	<b>1</b>	<b>218</b>

**Notes:**

- Programs are not mutually exclusive. It is possible for schools to be involved in both programs.
- See explanatory notes 1, 2, 3, 14 and 15.

**Table 4****List of college arrangements, midyear 2012**

College	Senior Campus	Other Campuses			
Brisbane Water Secondary College	Woy Woy Campus	Umina Campus			
Callaghan College	Jesmond Campus	Wallsend Campus	Waratah Technology Campus		
Chifley College	Senior Campus	Bidwill Campus	Dunheved Campus	Mount Druitt Campus	Shalvey Campus
Denison College of Secondary Education*		Bathurst High Campus	Kelso High Campus		
Dubbo College	Senior Campus	Delroy Campus	South Campus		
Georges River College	Oatley Senior Campus	Hurstville Boys Campus	Peakhurst Campus	Penshurst Girls Campus	
Great Lakes College	Senior Campus	Forster Campus	Tuncurry Campus		
Moree Secondary College	Albert St Campus	Carol Ave Campus			
Nirimba College	Wyndham College	Quakers Hill High School	Riverstone High School	Seven Hills High School	
Northern Beaches College	Freshwater Senior Campus	Balgowlah Boys Campus	Cromer Campus	Mackellar Girls Campus	Manly Campus
Sydney Secondary College	Blackwattle Bay Campus	Balmain Campus	Leichhardt Campus		
Tuggerah Lakes College	The Entrance Campus	Berkeley Vale Campus	Tumbi Umbi Campus		

**Notes:**

- \*Denison College of Secondary Education does not have a senior campus.
- See explanatory note 16.

**Table 5****Secondary education schools by selective, specialist and coeducational status, midyear 2012**

Selective Status	Specialty Name	Coeducational	Boys	Girls	Total
Fully Selective	Agricultural	3	1		4
	Comprehensive	9	4	4	17
Partially Selective	Comprehensive	17	1	1	19
	Junior College	2			2
	Language	2			2
	Senior College	1			1
<b>Total Selective</b>		<b>34</b>	<b>6</b>	<b>5</b>	<b>45</b>
Non-Selective	Comprehensive	325	12	16	353
	Creative Arts	1			1
	Intensive English	1			1
	Junior College	16	1	1	18
	Language	2		1	3
	Marine Technology	1			1
	Performing Arts	8			8
	Rural Technology	1			1
	Senior College	15			15
	Sports	7			7
	Technology	8	2	1	11
Visual Arts	1			1	
<b>Total Non-Selective</b>		<b>386</b>	<b>15</b>	<b>19</b>	<b>420</b>
<b>Total Secondary Education Schools</b>		<b>420</b>	<b>21</b>	<b>24</b>	<b>465</b>

**Notes:**

- Includes secondary schools and central/community schools. The Conservatorium High School is included with performing arts schools.
- See explanatory note 1.



**Table 6****Average primary class sizes by year, 1997 and 2002-2012**

Grade	1997	2002	2003	2004	2005	2006	2007	2008	2009	2010	2011	2012
Kindergarten	24.1	23.5	22.9	22.1	19.7	19.3	19.2	19.2	19.3	19.2	19.2	19.3
Year 1	25.5	25.0	24.5	24.6	23.6	21.3	21.1	21.2	21.3	21.2	21.2	21.2
Year 2	26.2	25.6	25.3	25.4	25.1	24.1	22.6	22.5	22.6	22.7	22.6	22.7
Year 3	26.6	26.3	26.2	26.4	26.1	25.9	25.7	25.7	25.8	25.6	25.7	25.5
Year 4	26.8	26.5	26.5	26.6	26.4	26.4	26.2	26.1	26.2	26.2	26.1	25.9
Year 5	26.8	26.7	26.8	26.8	26.6	26.6	26.5	26.5	26.5	26.4	26.4	26.2
Year 6	26.8	26.8	26.8	26.8	26.7	26.6	26.5	26.5	26.5	26.4	26.3	26.2
<b>Kindergarten - Year 6</b>	<b>26.9</b>	<b>26.5</b>	<b>26.3</b>	<b>26.2</b>	<b>25.3</b>	<b>24.6</b>	<b>24.3</b>	<b>24.2</b>	<b>24.3</b>	<b>24.2</b>	<b>24.0</b>	<b>24.0</b>

**Notes:**

- Class size audits were not conducted in 1998, 1999, 2000 and 2001.
- The average class size for each year level is calculated from regular and multi-age classes that contain a student from that year level
- Students attending schools for specific purposes (SSPs), students in support classes in regular schools and distance education students are excluded from average class size calculations.
- For more detailed analysis of average class sizes, please refer to **CESE Bulletin Issue 2 - Class Size, 2012**.
- See explanatory note 12.



**Table 7**

**Enrolments (FTE) in NSW government schools, 1970, 1980, 1990, 1992-2012**

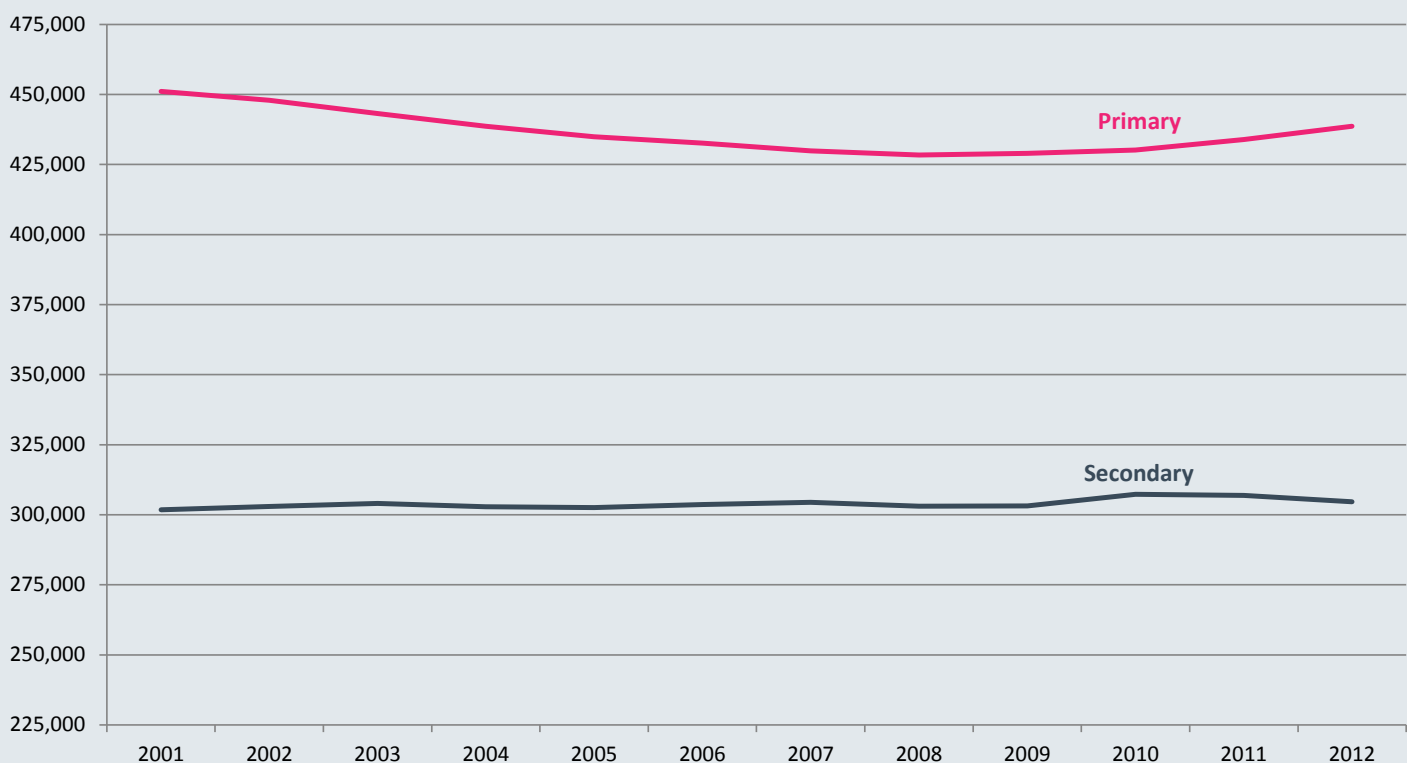
Year	Primary	Secondary	SSP	Total
1970	503,547	257,874		761,421
1980	515,769	283,352		799,121
1990	434,814	304,006	4,366	743,186
1992	444,059	308,752	4,041	756,852
1993	445,238	308,909.2	3,901	758,048.2
1994	445,599	306,716.6	3,798	756,113.6
1995	446,722	305,395.6	3,789	755,906.6
1996	450,465	306,823.3	3,749	761,037.3
1997	451,560	308,922.7	3,690	764,172.7
1998	452,565	309,136.7	3,673	765,374.7
1999	453,454	308,116.1	3,762	765,332.1
2000	454,363	303,681.1	3,792	761,836.1
2001	451,096	301,771.4	3,873	756,740.4
2002	447,897	302,988.0	3,915	754,800.0
2003	443,213	304,034.0	3,938	751,185.0
2004	438,677	302,849.6	3,981	745,507.6
2005	434,876	302,578.3	4,124	741,578.3
2006	432,660	303,622.0	4,133	740,415.0
2007	429,900	304,457.7	4,278	738,635.7
2008	428,331	303,055.7	4,392	735,778.7
2009	429,000	303,180.7	4,466	736,646.7
2010	430,177	307,291.2	4,673	742,141.2
2011	433,873	306,893.2	4,774	745,540.2
<b>2012</b>	<b>438,681</b>	<b>304,632.1</b>	<b>4,921</b>	<b>748,234.1</b>

**Notes:**

- Since 1993 some students have enrolled part-time and all enrolments are reported in full-time equivalent units (FTEs) and include full-time and part-time students.
- See explanatory notes 1, 3, 6, and 7.

**Figure 2**

**Primary and secondary enrolments (FTE) in NSW government schools, 2001-2012**



**Table 8****Age-grade distribution of students in NSW government schools, midyear 2012  
primary students by age and year of schooling (excluding support students)**

Age	Kindergarten	Year 1	Year 2	Year 3	Year 4	Year 5	Year 6	Total	Primary Total								
Yrs:Mths	Boys	Girls	Boys	Girls	Boys	Girls	Boys	Girls	Boys	Girls							
Under 5	694	948	1						695	948	1,643						
5-5:11	26,230	26,775	459	746					26,689	27,521	54,210						
6-6:11	7,817	5,392	24,939	25,328	447	677			33,203	31,398	64,601						
7-7:11	11	10	7,929	5,321	23,678	24,253	462	595	32,081	30,179	62,260						
8-8:11			28	20	7,649	5,261	22,658	23,347	425	1	30,761	29,239	60,000				
9-9:11					39	14	7,930	5,397	22,128	23,105	410	589	30,507	29,106	59,613		
10-10:11					2		51	22	7,785	5,279	21,443	22,725	407	564	29,688	28,590	58,278
11-11:11								1	44	35	7,926	5,438	21,771	22,782	29,741	28,256	57,997
12-12:11									64	35	8,120	5,675	8,184	5,710	13,894		119
13-13:11											72	47	72	47			
14-14:11											2	1	2	1			
Subtotal	34,752	33,125	33,356	31,415	31,815	30,205	31,101	29,363	30,383	29,030	29,844	28,787	30,372	29,070	221,623	210,995	432,618
<b>Total</b>	<b>67,877</b>	<b>64,771</b>	<b>62,020</b>	<b>60,464</b>	<b>59,413</b>	<b>58,631</b>	<b>59,442</b>	<b>432,618</b>									

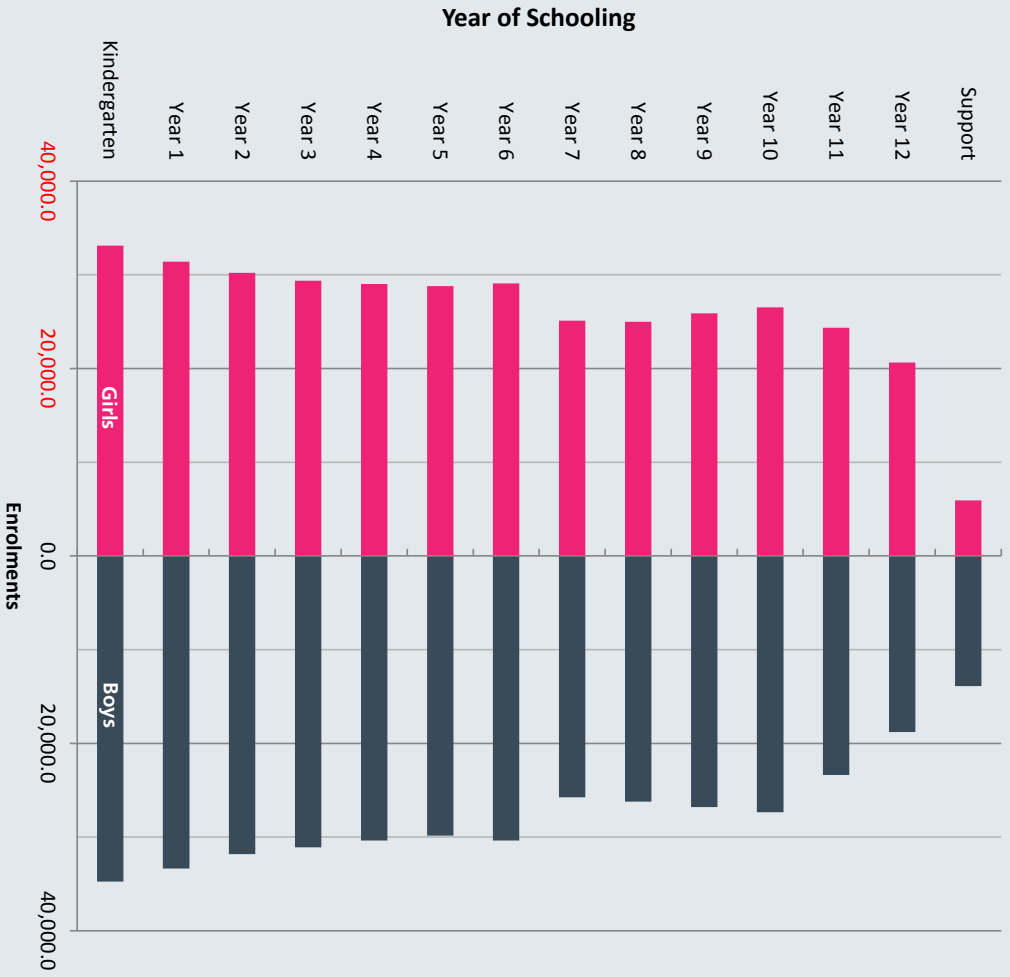
**Notes:** Students in distance education and Opportunity Classes (OC) are included with their appropriate grade levels. Students in support classes either in mainstream schools or schools for specific purposes (SSPs) are not included.

**Table 9****Age-grade distribution of students in NSW government schools, midyear 2012  
full-time, secondary students by age and year of schooling (excluding support students)**

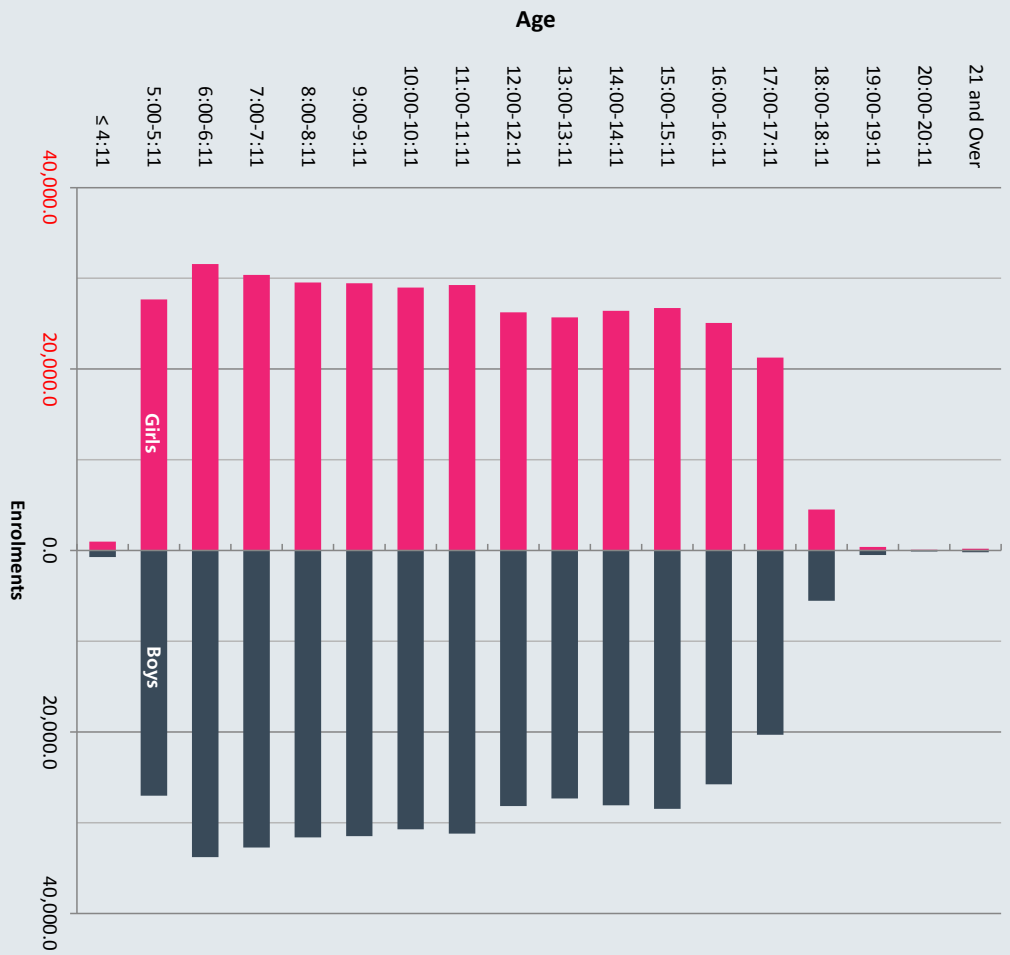
Age	Year 7	Year 8	Year 9	Year 10	Year 11	Year 12	Total	Secondary Total							
Yrs:Mths	Boys	Girls	Boys	Girls	Boys	Girls	Boys	Girls							
Under 11	2	1					2	1	3						
11-11:11	371	517	2				371	519	890						
12-12:11	18,398	19,441	396	545	1	1	18,796	19,987	38,783						
13-13:11	6,894	5,090	18,536	19,405	412	599	25,846	25,096	50,942						
14-14:11	88	45	7,180	4,971	18,870	20,019	26,590	25,700	52,290						
15-15:11		1	110	68	7,387	5,157	605	2	26,997	26,023	53,020				
16-16:11			2	2	124	97	413	1	24,332	24,309	48,641				
17-17:11					8	293	5,725	4,752	13,027	15,492	19,053	20,453	39,506		
18-18:11					1	37	451	340	4,509	3,782	4,998	4,156	9,154		
19-19:11					22	15	67	69	332	254	421	338	759		
20-20:11					5	11	23	13	69	55	97	79	176		
21 and Over					44	39	38	51	51	45	133	135	268		
Subtotal	25,753	25,095	26,224	24,993	26,803	25,880	27,357	26,530	23,109	24,087	18,390	20,211	147,636	146,796	294,432
<b>Total</b>	<b>50,848</b>	<b>51,217</b>	<b>52,683</b>	<b>53,887</b>	<b>47,196</b>	<b>38,601</b>	<b>294,432</b>								

**Notes:** Students in distance education are included with their appropriate grade levels. Students in support classes either in mainstream schools or schools for specific purposes (SSPs) are not included.

**Figure 3**  
Enrolments in NSW government schools by year of schooling and gender, midyear 2012



**Figure 4**  
Enrolments in NSW government schools by age and gender, midyear 2012



**Table 10****Age-grade distribution of students in NSW government schools, midyear 2012  
part-time secondary students by age and year of schooling**

Age Yrs:Mths	Year 11		Year 12		Total		Total Part Time
	Boys	Girls	Boys	Girls	Boys	Girls	
Under 16	6	9	2	-	8	9	17
16-16:11	283	254	11	14	294	268	562
17-17:11	117	98	316	364	433	462	895
18-18:11	22	16	186	199	208	215	423
19-19:11	5	12	48	51	53	63	116
20-20:11	6	6	10	8	16	14	30
21 and Over	65	132	12	36	77	168	245
Subtotal	504	527	585	672	1,089	1,199	2,288
<b>Total</b>	<b>1,031</b>		<b>1,257</b>		<b>2,288</b>		

**Full-time equivalent:**

Subtotal	272.4	275.9	392.0	419.8	664.4	695.7
<b>Total</b>	<b>548.3</b>		<b>811.8</b>		<b>1,360.1</b>	

**Notes:** See explanatory notes 6 and 7.

**Table 11****Enrolments in support classes and schools for specific purposes (SSPs) by category, 2012**

Category	Primary Schools	Secondary Schools	Schools for Specific Purposes	Total
AU	473	373	27	873
BD	24	74	444	542
DB			5	5
DR				
ED	297	447	832	1,576
H	125	115	5	245
IE		1,767		1,767
IM	1,904	3,268	12	5,184
IO	991	996		1,987
IO/AU	77	7	5	89
IO/IS	779	847	2,746	4,372
IO/PH				
IS	34	9	148	191
L	65			65
JJ			338	338
MC	1,211	702	308	2,221
OA				
P	78	105	12	195
R				
TUT	5	130	13	148
V			26	26
<b>Total</b>	<b>6,063</b>	<b>8,840</b>	<b>4,921</b>	<b>19,824</b>

**Key:**

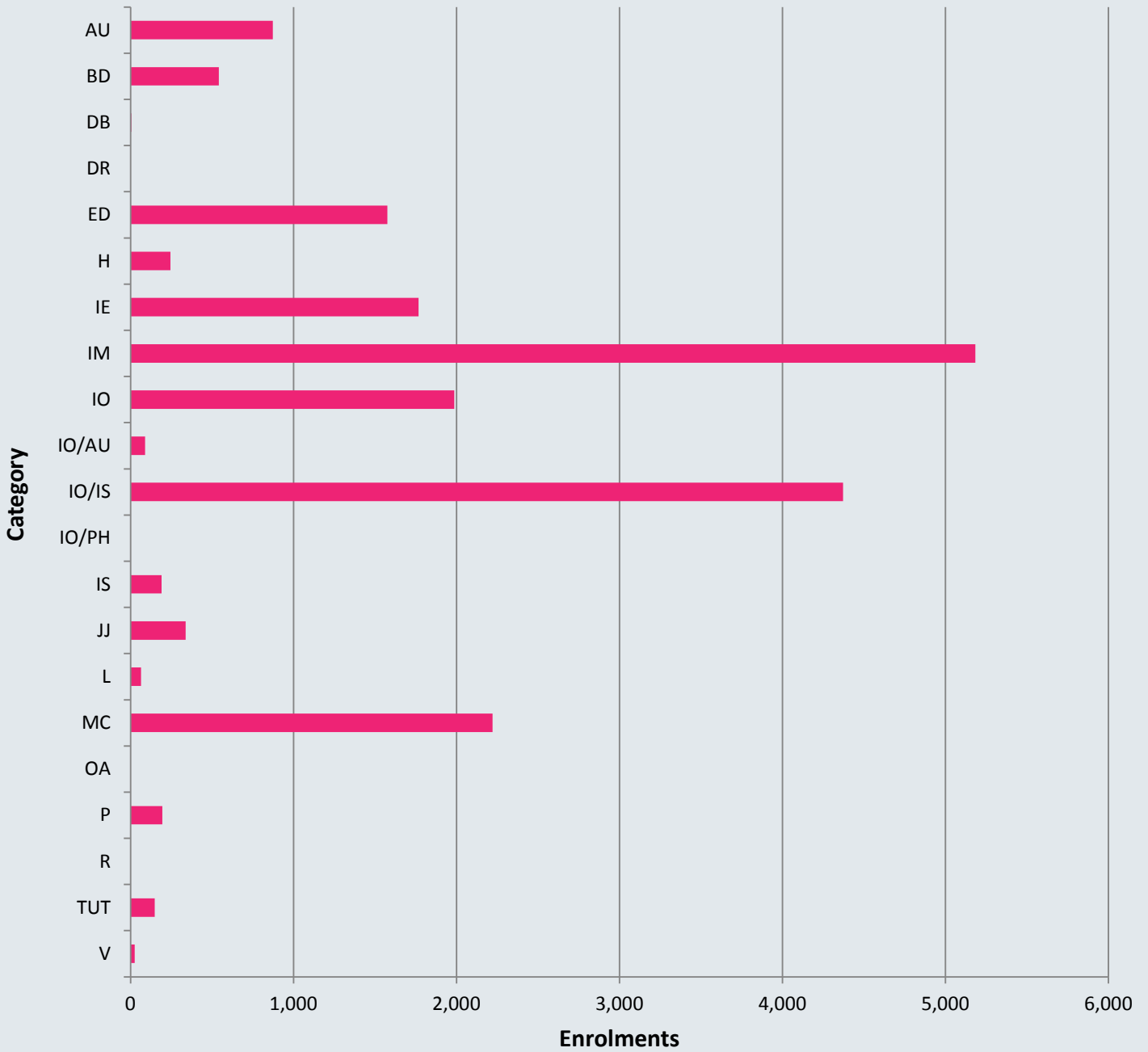
AU	Autism	IM	Mild intellectual disability	JJ	Juvenile justice
BD	Behaviour disorder	IO	Moderate intellectual disability	MC	Multicategorical
DB	Visual and hearing disability	IO/AU	Both Autism and moderate intellectual disability	OA	Outreach and Access
DR	Residential assessment and remediation	IO/IS	Autistic with Severe Intellectual disability	P	Physical disability
ED	Emotional disturbance	IO/PH	Both moderate intellectual and physical disability	R	Reading
H	Hearing disability	IS	Severe intellectual disability	TUT	Tutorial
IE	Intensive English	L	Language disorder	V	Visual disability

**Notes:**

- Students in SSPs, except those in juvenile justice schools, are reported by the category of their primary disability, not by the type of SSP.
- See explanatory notes 3, and 4.

**Figure 5**

**Enrolments in support classes in ordinary schools and SSPs by category, midyear 2012**



**Key:**

AU	Autism	IM	Mild intellectual disability	JJ	Juvenile justice
BD	Behaviour disorder	IO	Moderate intellectual disability	MC	Multicategorical
DB	Visual and hearing disability	IO/AU	Both Autism and moderate intellectual disability	OA	Outreach and Access
DR	Residential assessment and remediation	IO/IS	Autistic with Severe Intellectual disability	P	Physical disability
ED	Emotional disturbance	IO/PH	Both moderate intellectual and physical disability	R	Reading
H	Hearing disability	IS	Severe intellectual disability	TUT	Tutorial
IE	Intensive English	L	Language disorder	V	Visual disability

**Table 12**  
**Age-grade distribution of students in NSW government schools, midyear 2012**  
**students in schools for specific purposes (SSPs) by age and category**

Age Yrs:Mths	AU B	BD G	BD B	DB G	DB B	ED B	ED G	H B	H G	IM B	IM G	IO/AU B	IO/AU G	IO/S B	IO/S G	IS B	IS G	JJ B	JJ G	MC B	MC G	P B	P G	TUT B	TUT G	V B	V G	Total B	Total G	
3-3:11																														
4-4:11																														
5-5:11	2		1			4							2		68	51	5	4			25	15		1					25	17
6-6:11	4					14	1							113	45	8	4			18	4					1		107	71	
7-7:11	2		1			15	1					1		130	62	4	4			12	5	2	2			1	1	166	75	
8-8:11	2		4	1	1	27	2							155	52	8	1			21	5	2	1			2	2	222	65	
9-9:11	4		2	1		38	3	1						149	56	8	8			14	5					2		210	73	
10-10:11	2		11	2		48	1		1					135	59	6	5			16	7			1	1			219	76	
11-11:11	8	2	25	3		42	6					1		141	68	6	7			15	4			1			1	239	91	
12-12:11	1		41	4		46	2			1	1			139	71	6	2	3		19	3					1	3	259	86	
13-13:11			92	5		64	13	1		1				144	74	9	9	6	1	13	3			4	2	2	1	336	108	
14-14:11			82	28		105	37			2				154	88	8	6	29	6	14	10	2				2	2	400	177	
15-15:11			90	24		88	34	1		1				151	65	5	9	43	4	9	6	1				2	1	390	145	
16-16:11			22	3		95	35			1	2			142	70	2	3	69	7	17	5	1				1	1	350	125	
17-17:11			1	1		54	30	1		1				152	72	5	6	83	2	10	3	1				2		310	114	
18-18:11					1	17	7			2		1		75	40	4		55	4	7	3	1						163	54	
19-19:11						1	1							5				17	2										23	4
20-20:11														1				5											6	
21&Over						1												2											3	
Subtotal	25	2	372	72	2	3	659	173	4	1	9	3	5	1,867	879	78	70	312	26	220	88	7	5	8	5	18	8	3,586	1,335	
<b>Total</b>	<b>27</b>	<b>2</b>	<b>444</b>	<b>72</b>	<b>5</b>	<b>3</b>	<b>832</b>	<b>173</b>	<b>5</b>	<b>12</b>	<b>12</b>	<b>5</b>	<b>5</b>	<b>2,746</b>	<b>879</b>	<b>148</b>	<b>70</b>	<b>312</b>	<b>26</b>	<b>220</b>	<b>88</b>	<b>7</b>	<b>5</b>	<b>8</b>	<b>5</b>	<b>18</b>	<b>8</b>	<b>3,586</b>	<b>1,335</b>	

**Key:**

B Boys

G Girls

- AU Autism
- BD Behaviour disorder
- DB Visual and hearing disability
- DR Residential assessment and remediation
- ED Emotional disturbance
- H Hearing disability
- IE Intensive English
- IM Mild intellectual disability
- IO Moderate intellectual disability
- IO/AU Both Autism and moderate intellectual disability
- IO/S Autistic with Severe Intellectual disability
- IO/PH Both moderate intellectual and physical disability
- IS Severe intellectual disability
- L Language disorder
- JJ Juvenile justice
- MC Multicategorical
- OA Outreach and Access
- P Physical disability
- R Reading
- TUT Tutorial
- V Visual disability

**Notes:**

- Students in SSPs, except those in juvenile justice schools, are reported by the category of their primary disability, not by the type of SSP.
- IO and IO/PH have been removed from the table due to zero enrolments in these category.
- See explanatory note 3.

**Table 13****Age distribution of students in NSW government preschools and early intervention programs, midyear 2012****Preschools**

Age Yrs:Mths	All Students	Aboriginal and Torres Strait Islander Students
3 and Under	159	34
4:00 - 4:11	3,608	463
5:00 - 5:11	654	100
6 and Over	3	2
<b>Total</b>	<b>4,424</b>	<b>599</b>

**Early Intervention programs**

Age Yrs:Mths	All Students	Aboriginal and Torres Strait Islander Students
3 and Under	75	13
4:00 - 4:11	397	35
5:00 - 5:11	271	20
<b>Total</b>	<b>743</b>	<b>68</b>

**Notes:**

- Figures reported above are those enrolled in a preschool or an Early Intervention program that is run by a NSW government school. These government preschool classes provide full-time or part-time schooling at pre-primary level.
- In NSW, most children receiving a preschool education are enrolled at a government funded community preschool or in a Long Day Care centre which offers a preschool program.

**Table 14****Enrolments (FTE) in distance education by year of schooling, midyear 2012**

Primary	Boys	Girls	Total
Kindergarten	44	40	84
Year 1	49	36	85
Year 2	54	53	107
Year 3	51	64	115
Year 4	50	33	83
Year 5	52	45	97
Year 6	65	48	113
Primary Support	6	3	9
<b>Total Primary</b>	<b>371.0</b>	<b>322.0</b>	<b>693.0</b>

Secondary	Boys	Girls	Total
Year 7	64	39	103
Year 8	106	72	178
Year 9	215	173	388
Year 10	299	323	622
Year 11	132.6	171.2	303.8
Year 12	57	83.5	140.5
Secondary Support	20	11	31
<b>Total Secondary</b>	<b>893.6</b>	<b>872.7</b>	<b>1,766.3</b>

<b>Total All Students</b>	<b>1,264.6</b>	<b>1,194.7</b>	<b>2,459.3</b>
---------------------------	----------------	----------------	----------------

**Notes:**

- All enrolments are reported in full-time equivalent units (FTE), and include full-time and part-time students whose main school is the distance education centre.
- See explanatory note 5.



**Table 15**

**Enrolments (FTE) of Aboriginal students by region and year of schooling in NSW government schools, 2012**

Region Name	Primary								Primary	SSP
	Kinder	Year 1	Year 2	Year 3	Year 4	Year 5	Year 6	Support	Total	Total
Hunter/Central Coast	736	670	720	574	676	630	609	104	4,719	110
Illawarra and South East	456	438	395	374	371	363	379	136	2,912	36
New England	457	460	391	386	336	324	339	72	2,765	40
North Coast	685	635	588	579	565	560	588	124	4,324	45
Northern Sydney	33	31	32	36	31	31	24	4	222	6
Riverina	317	280	257	221	246	245	253	20	1,839	45
South Western Sydney	360	322	311	284	244	264	272	73	2,130	134
Sydney	159	167	169	153	129	140	134	19	1,070	49
Western NSW	792	698	627	606	595	595	563	188	4,664	58
Western Sydney	484	476	402	396	408	365	356	146	3,033	109
<b>State Total</b>	<b>4,479</b>	<b>4,177</b>	<b>3,892</b>	<b>3,609</b>	<b>3,601</b>	<b>3,517</b>	<b>3,517</b>	<b>886</b>	<b>27,678</b>	<b>632</b>
As percentage of Year	6.6%	6.4%	6.3%	6.0%	6.1%	6.0%	5.9%	14.6%	6.3%	12.8%

Region Name	Secondary							Secondary	Region	% of
	Year 7	Year 8	Year 9	Year 10	Year 11	Year 12	Support	Total	Total	NSW
Hunter/Central Coast	616	585	586	585	395.4	255.0	148	3,170.4	7,999.4	17.0%
Illawarra and South East	358	411	368	347	247.3	170.3	159	2,060.6	5,008.6	10.6%
New England	337	386	373	337	224.1	130.4	76	1,863.5	4,668.5	9.9%
North Coast	590	572	564	564	431.0	237.2	158	3,116.2	7,485.2	15.9%
Northern Sydney	24	26	29	30	19.6	13.8	3	145.4	373.4	0.8%
Riverina	258	231	214	204	127.8	59.8	30	1,124.6	3,008.6	6.4%
South Western Sydney	254	237	235	273	180.4	107.4	93	1,379.8	3,643.8	7.7%
Sydney	133	117	119	142	104.7	70.6	30	716.3	1,835.3	3.9%
Western NSW	603	585	602	626	402.2	213.4	276	3,307.6	8,029.6	17.1%
Western Sydney	335	355	347	338	249.2	126.2	142	1,892.4	5,034.4	10.7%
<b>State Total</b>	<b>3,508</b>	<b>3,505</b>	<b>3,437</b>	<b>3,446</b>	<b>2,381.7</b>	<b>1,384.1</b>	<b>1,115</b>	<b>18,776.8</b>	<b>47,086.8</b>	<b>100%</b>
As percentage of Year	6.9%	6.8%	6.5%	6.4%	5.0%	3.5%	12.6%	6.2%	6.3%	

**Notes:**

- Students in Distance Education and Opportunity Classes (OC) are included with their appropriate grade levels. Students enrolled at the Distance Education Support Unit are included with secondary support classes in Sydney Region.
- See explanatory note 8.

**Table 16**

**Enrolment of students of language background other than English (LBOTE) in NSW government schools, March 2012 by region and year of schooling**

Region Name	Primary								Primary Total	SSP Total
	Kinder	Year 1	Year 2	Year 3	Year 4	Year 5	Year 6	Support		
Hunter/Central Coast	617	583	548	536	575	550	565	45	4,019	56
Illawarra and South East	623	637	638	633	589	645	654	65	4,484	35
New England	71	83	69	54	60	66	63	2	468	4
North Coast	291	261	253	242	218	246	248	9	1,768	1
Northern Sydney	2,892	2,819	2,701	2,552	2,644	2,557	2,722	71	18,958	108
Riverina	215	207	180	202	178	183	189	10	1,364	12
South Western Sydney	7,536	7,168	6,967	6,951	6,926	6,672	7,057	845	50,122	643
Sydney	3,660	3,475	3,433	3,292	3,320	3,238	3,468	200	24,086	159
Western NSW	119	118	100	108	101	103	109	10	768	6
Western Sydney	3,751	3,507	3,375	3,303	3,182	3,164	3,182	304	23,768	229
<b>State Total</b>	<b>19,775</b>	<b>18,858</b>	<b>18,264</b>	<b>17,873</b>	<b>17,793</b>	<b>17,424</b>	<b>18,257</b>	<b>1,561</b>	<b>129,805</b>	<b>1,253</b>
As percentage of Year	29.3%	29.1%	29.4%	29.4%	29.9%	29.6%	30.5%	25.4%	29.5%	22.5%

Region Name	Secondary							Secondary Total	Region Total	% of Region
	Year 7	Year 8	Year 9	Year 10	Year 11	Year 12	Support			
Hunter/Central Coast	518	550	527	540	499	417	59	3,110	7,185	6.6%
Illawarra and South East	497	576	569	567	451	447	117	3,224	7,743	11.1%
New England	53	40	40	36	37	48	2	256	728	3.2%
North Coast	235	228	224	218	193	191	20	1,309	3,078	4.7%
Northern Sydney	2,376	2,383	2,481	2,650	2,866	2,637	355	15,748	34,814	38.4%
Riverina	140	163	152	115	146	128	5	849	2,225	6.8%
South Western Sydney	5,437	5,351	5,739	6,171	6,111	5,452	1,612	35,873	86,638	66.0%
Sydney	3,150	3,118	3,240	3,413	3,475	3,092	598	20,086	44,331	48.2%
Western NSW	86	98	103	76	101	59	10	533	1,307	3.3%
Western Sydney	2,773	2,718	2,784	2,820	2,956	2,558	451	17,060	41,057	38.8%
<b>State Total</b>	<b>15,265</b>	<b>15,225</b>	<b>15,859</b>	<b>16,606</b>	<b>16,835</b>	<b>15,029</b>	<b>3,229</b>	<b>98,048</b>	<b>229,106</b>	<b>30.2%</b>
As percentage of Year	29.9%	29.6%	30.1%	31.0%	32.0%	35.0%	32.4%	31.2%	30.2%	

**Notes:**

- LBOTE enrolments 2012 are compared to enrolments (headcount) estimates in February 2012.
- February enrolment data differs from Mid-Year Census data collected in the first week in August each year (published annually in the National School Statistics Collection). It is used in these tables as it is closer in time to the LBOTE collection (March) each year.
- For more detailed analysis of students of language background other than English, please refer to **CESE Bulletin Issue 1 - LBOTE, 2012**.
- See explanatory note 10.

**Table 17****Enrolments (FTE) in NSW government schools by program and region, midyear 2012**

Region	Priority Schools Funding Program	Country Area Program
Hunter/Central Coast	18,171.6	19.0
Illawarra and South East	10,419.2	6,769.1
New England	7,036.2	4,200.8
North Coast	18,607.6	498.0
Northern Sydney	-	-
Riverina	5,633.8	6,246.8
South Western Sydney	49,715.0	-
Sydney	2,922.8	-
Western NSW	12,763.6	6,884.1
Western Sydney	15,434.2	-
<b>State Total</b>	<b>140,704.0</b>	<b>24,617.8</b>

**Notes:**

- Programs are not mutually exclusive. It is possible for schools to participate in more than one program.
- See explanatory notes 14 and 15.



**Table 18****Primary students in NSW government schools studying a language other than English by year of schooling and language, May 2012**

Language Name	Kindergarten	Year 1	Year 2	Year 3	Year 4	Year 5	Year 6	Support	Total
Chinese (Mandarin)	2,733	2,758	2,696	2,485	2,492	2,603	2,457	448	18,672
Italian	1,954	2,181	2,316	2,340	2,061	1,643	1,670		14,165
Arabic	1,471	1,429	1,303	1,303	1,184	1,098	1,003	403	9,194
French	882	980	1,025	1,088	1,138	1,029	1,303		7,445
Vietnamese	774	773	813	834	750	673	834	365	5,816
Japanese	560	533	573	696	663	796	747	24	4,592
Greek	512	752	687	564	507	556	525	92	4,195
Indonesian	365	313	393	531	454	641	775		3,472
Spanish	200	196	173	235	242	241	212	40	1,539
Korean	198	256	218	180	180	204	281	4	1,521
Wiradjuri	100	171	148	184	187	214	224	27	1,255
German	155	178	170	140	128	109	207		1,087
Macedonian	89	110	123	110	122	115	101	65	835
Assyrian	54	78	80	97	114	85	114	43	665
Hebrew	141	94	107	93	64	38	29	6	572
Turkish	120	106	86	49	62	79	60	5	567
Khmer	58	60	62	77	58	126	70		511
Samoaan	62	85	64	91	100	50	49		501
Gumbaynggir	70	52	72	50	44	46	56	15	405
Punjabi	51	50	64	49	68	53	60		395
Portuguese	20	23	39	84	63	77	87		393
Bengali	58	43	54	32	40	41	30	30	328
Dari	90	39	26	39	36	35	35		300
Bundjalung	28	40	33	31	30	41	35		238
Auslan	34	33	31	36	31	26	33		224
Tongan	35	35	19	20	34	28	31		202
Serbian	2	21	49	26	30	26	21		175
Hindi	33	24	31	19	43	8	15		173
Maori	26	8	14	37	19	9	8	31	152
Tamil	21	22	18	21	13	27	12		134
Gamilaraay	19	30	15	18	9	15	16		122
Urdu	23	27	17	18	17	12	8		122
Russian	14	12	15	11	16	17	11		96
Maori (Cook Island)	19	12	9	8	15	12	14		89
Githabul	10	17	7	13	12	11	12		82
Wadi Wadi	20	12	6	8	13	6	5	6	76
Farsi	6	5	7	10	14	6	9		57
Dhanggatti	11	11	7	7	8				44
Barkindji/Paakantyi	1	2	4	2	11	9	11		40
Lao	6	6	8	2	5	5	5		37
Paakantyi/Barkindji				1	10	5	8		24
Greek (Modern)		4	6	5	1		2		18
<b>Total</b>	<b>11,025</b>	<b>11,581</b>	<b>11,588</b>	<b>11,644</b>	<b>11,088</b>	<b>10,815</b>	<b>11,185</b>	<b>1,604</b>	<b>80,530</b>

**Notes:** Students may study more than one language. Students in Distance Education and Opportunity Classes (OC) are included with their appropriate grade levels.

**Table 19**
**Language participation Year 7-9 by gender and year of schooling, August 2012**

Language Name	Year 7			Year 8			Year 9			All Students		
	Girls	Boys	Total	Girls	Boys	Total	Girls	Boys	Total	Girls	Boys	Total
Japanese	5,116	5,528	10,644	5,076	4,830	9,906	1,276	1,023	2,299	11,468	11,381	22,849
French	4,222	4,478	8,700	4,550	4,025	8,575	1,084	396	1,480	9,856	8,899	18,755
Italian	1,415	1,356	2,771	1,847	1,395	3,242	354	141	495	3,616	2,892	6,508
Chinese (Mandarin)	1,114	1,274	2,388	819	1,145	1,964	427	268	695	2,360	2,687	5,047
German	843	1,128	1,971	1,029	1,399	2,428	217	193	410	2,089	2,720	4,809
Indonesian	836	875	1,711	718	788	1,506	65	43	108	1,619	1,706	3,325
Spanish	667	672	1,339	597	480	1,077	96	45	141	1,360	1,197	2,557
Korean	179	141	320	127	167	294	65	28	93	371	336	707
Greek (Modern)	60	56	116	256	118	374	47	28	75	363	202	565
Arabic	42	168	210	81	132	213	66	38	104	189	338	527
Latin		90	90	124	152	276	67	58	125	191	300	491
Vietnamese	21	29	50	80	87	167	31	26	57	132	142	274
Wiradjuri	56	55	111	51	59	110				107	114	221
Dhurga	88	102	190							88	102	190
Turkish	14	12	26	47	11	58	26	15	41	87	38	125
Macedonian	16	7	23	19	7	26	15	9	24	50	23	73
Gumbaynggir	14	13	27	22	22	44				36	35	71
Yuwaalaraay	9	16	25	17	16	33				26	32	58
Serbian	7	6	13	7	7	14	15	6	21	29	19	48
Gamilaraay	18	9	27	10	5	15				28	14	42
Hindi	1	5	6	9	10	19	8	7	15	18	22	40
Polish	7	5	12	5	5	10	8	6	14	20	16	36
Paakantyi/Barkindji	8	8	16	5	14	19				13	22	35
Hebrew	3	5	8	12	6	18	5		5	20	11	31
Russian				9	16	25	2	1	3	11	17	28
Chinese (Cantonese)		1	1	7	9	16		1	1	7	11	18
Croatian	1	3	4	1	3	4	2	6	8	4	12	16
Bengali	3	1	4	4	3	7	2	2	4	9	6	15
Greek (Classical)					13	13					13	13
Khmer	6		6	2	3	5		1	1	8	4	12
Hungarian	1		1	1		1	3	1	4	5	1	6
Maltese	1	2	3	1	1	2		1	1	2	4	6
Portuguese				3	1	4		2	2	3	3	6
Armenian							4		4	4		4
Ukranian							1		1	1		1
<b>Total</b>	<b>14,768</b>	<b>16,045</b>	<b>30,813</b>	<b>15,536</b>	<b>14,929</b>	<b>30,465</b>	<b>3,886</b>	<b>2,345</b>	<b>6,231</b>	<b>34,190</b>	<b>33,319</b>	<b>67,509</b>

**Notes:**

- The table includes only students learning a language on average for more than 1 hour per week for 35 or more weeks a year.
- There were an additional 23,449 students who were learning a language for a shorter duration.

Table 20

## Course enrolments in Year 10 subjects in NSW government schools, 2012

BOS Course ID	Course Name	Hours	Male	Female	Total
300	English	200	26,333	25,505	51,838
301	English (Life Skills)		1,312	546	1,858
323	Mathematics	200	26,348	25,512	51,860
324	Mathematics (Life Skills)		1,303	546	1,849
350	Science	200	26,351	25,554	51,905
351	Science (Life Skills)		1,299	543	1,842
410	Aboriginal Studies	200	75	85	160
411	Aboriginal Studies	100	40	56	96
412	Aboriginal Studies (Life Skills)		26		26
430	Commerce	200	4,694	4,471	9,165
431	Commerce	100	779	884	1,663
432	Commerce (Life Skills)		12	2	14
440	Geography	200	122	31	153
441	Geography	100	94	234	328
450	History	200	1,399	1,263	2,662
451	History	100	585	689	1,274
500	Work Education	200	405	409	814
501	Work Education	100	684	675	1,359
502	Work Education (Life Skills)		345	139	484
790	Aboriginal Languages	200		4	4
791	Aboriginal Languages	100	3	1	4
792	Aboriginal Languages (Life Skills)		36	7	43
800	Arabic	200	30	27	57
801	Arabic	100	1	13	14
802	Arabic (Life Skills)			3	3
810	Chinese	200	175	271	446
811	Chinese	100	23	50	73
812	Chinese (Life Skills)		11	4	15
870	French	200	297	927	1,224
871	French	100	56	173	229
872	French (Life Skills)		9	2	11
880	German	200	172	206	378
881	German	100	22	23	45
882	German (Life Skills)		7	3	10
890	Hebrew	200	4	4	8
910	Indonesian	200	22	61	83
911	Indonesian	100	3	14	17
920	Italian	200	117	253	370
921	Italian	100	40	62	102
922	Italian (Life Skills)		19	18	37
930	Japanese	200	632	1,087	1,719
931	Japanese	100	94	134	228
932	Japanese (Life Skills)		19	7	26
940	Korean	200	17	39	56
941	Korean	100	2	7	9
950	Latin	200	36	64	100
951	Latin	100		2	2
990	Modern Greek	200	11	27	38
991	Modern Greek	100	9	11	20
992	Modern Greek (Life Skills)		13	7	20
1010	Russian	200	3	3	6
1040	Spanish	200	31	47	78
1041	Spanish	100	5	10	15
1042	Spanish (Life Skills)		6	2	8
1050	Turkish	200	3	10	13
1051	Turkish	100	2	1	3
1071	Vietnamese	200	33	40	73

Table 20

## Course enrolments in Year 10 subjects in NSW government schools, 2012 (continued)

BOS Course ID	Course Name	Hours	Male	Female	Total
1072	Vietnamese	100	2	3	5
1605	Agricultural Technology	200	2,363	1,858	4,221
1606	Agricultural Technology	100	510	423	933
1607	Agricultural Technology (Life Skills)		102	33	135
1625	Food Technology	200	4,625	7,983	12,608
1626	Food Technology	100	1,134	1,556	2,690
1627	Food Technology (Life Skills)		403	183	586
1650	Design and Technology	200	459	739	1,198
1651	Design and Technology	100	199	190	389
1652	Design & Technology (Life Skills)		129	48	177
1700	Graphics Technology	200	1,325	338	1,663
1701	Graphics Technology	100	431	152	583
1702	Graphics Technology (Life Skills)		3		3
1800	Industrial Technology (Automotive)	200	390	20	410
1801	Industrial Technology (Automotive)	100	160	15	175
1802	Industrial Technology (Building and Construction)	200	362	8	370
1803	Industrial Technology (Building and Construction)	100	171	12	183
1804	Industrial Technology (Ceramics)	200	7	15	22
1805	Industrial Technology (Ceramics)	100	2	2	4
1806	Industrial Technology (Electronics)	200	1,385	56	1,441
1807	Industrial Technology (Electronics)	100	298	22	320
1808	Industrial Technology (Engineering)	200	1,898	80	1,978
1809	Industrial Technology (Engineering)	100	346	21	367
1810	Industrial Technology (Farm Maintenance)	200	18		18
1811	Industrial Technology (Farm Maintenance)	100		2	2
1812	Industrial Technology (Leather)	200	2		2
1813	Industrial Technology (Leather)	100	4	3	7
1814	Industrial Technology (Metal)	200	2,950	160	3,110
1815	Industrial Technology (Metal)	100	735	88	823
1816	Industrial Technology (Multimedia/Photography)	200	461	312	773
1817	Industrial Technology (Multimedia/Photography)	100	192	207	399
1820	Industrial Technology (Timber)	200	6,343	740	7,083
1821	Industrial Technology (Timber)	100	1,199	282	1,481
1822	Industrial Technology (Life Skills)		172	34	206
1830	Information & Software Technology	200	4,731	1,603	6,334
1831	Information & Software Technology	100	946	368	1,314
1832	Information & Software Technology (Life Skills)		148	55	203
1900	Textiles Technology	200	33	2,236	2,269
1901	Textiles Technology	100	17	706	723
1902	Textiles Technology (Life Skills)		20	23	43
2000	Dance	200	92	1,832	1,924
2001	Dance	100	28	339	367
2002	Dance (Life Skills)		14	15	29
2010	Drama	200	1,374	3,581	4,955
2011	Drama	100	352	679	1,031
2012	Drama (Life Skills)		27	18	45
2050	Music	200	3,766	3,389	7,155
2051	Music	100	629	588	1,217
2052	Music (Life Skills)		257	114	371
2060	Visual Arts	200	2,762	6,501	9,263
2061	Visual Arts	100	705	1,264	1,969
2062	Visual Arts (Life Skills)		399	189	588
2070	Visual Design	200	312	812	1,124
2071	Visual Design	100	140	400	540
2072	Visual Design (Life Skills)		10	7	17
2080	Photographic and Digital Media	200	1,297	3,405	4,702
2081	Photographic and Digital Media	100	490	1,130	1,620

**Table 20****Course enrolments in Year 10 subjects in NSW government schools, 2012 (continued)**

BOS Course ID	Course Name	Hours	Male	Female	Total
2082	Photographic and Digital Media (Life Skills)		15	15	30
2420	Personal Development, Health and P.E.	200	14,166	14,308	28,474
2421	Personal Development, Health and P.E.	100	11,755	10,759	22,514
2422	Personal Development, Health and P.E. (Life Skills)		1,192	489	1,681

**Note:** Hours equal to the number of hours studied over Years 9 and 10.

### Number of students meeting the curriculum requirements for the Record of School Achievement (RSA), Year 10 students in NSW government schools, 2012

In 2012, the School Certificate was discontinued and replaced by the Record of School Achievement (RSA). The RSA is a record of a student's achievements from Year 10 until they leave school.

The table shows the number of Year 10 students that completed each of the mandatory courses for a RSA. The courses may have been completed when the students were in Year 7, 8 or 9. For example, the Languages course would have been completed by students when they were in Year 7 or 8.

	Male	Female	Total
Number of students	26,659	25,301	51,960

### Optional online literacy and numeracy test

BOS Course ID	Course Name	Male	Female	Total
6020	Literacy Test	495	287	782
6030	Numeracy Test	495	287	782

**Source:** Department of Education and Communities, data derived from Board of Studies data.

**Notes:**

- From 2012, eligible students who leave school before receiving their Higher School Certificate (HSC) will receive the NSW Record of School Achievement (RSA).
- Students need to complete the mandatory requirements for Stage 5 (Year 10) to be eligible for a RSA. They must have:
  - » attended a government school, an accredited non-government school or a recognised school outside NSW;
  - » undertaken and completed courses of study that satisfy the Board's curriculum and assessment requirements for the Record of School Achievement;
  - » complied with any other regulations or requirements (such as attendance) imposed by the Minister or the Board; and
  - » completed Year 10.
- Students intending to leave school before completing their HSC can take optional online literacy and numeracy tests. They are designed to provide an overview of a student's level of achievement in these areas.
- Students are required to complete the following mandatory curriculum for the RSA:
  - » English
  - » Mathematics
  - » Science
  - » Human Society and its Environments
  - » Languages other than English
  - » Technological and Applied Studies
  - » Creative Arts
  - » Personal Development, Health and Physical Education



Table 21

## Course enrolments in Year 11 and Year 12 subjects in NSW government schools, 2012

Course Name	Units	Year 11			Year 12		
		Male	Female	Total	Male	Female	Total
Aboriginal Studies	2	170	347	517	93	227	320
Aboriginal Studies Life Skills	2	28	15	43			
Aged Care Specialisation Study	1				4	16	20
Agriculture	2	784	677	1,461	444	544	988
Agriculture Life Skills	2	30	13	43	23	9	32
Ancient History	2	3,982	5,531	9,513	2,953	4,343	7,296
Arabic Beginners	2	2	1	3		3	3
Arabic Continuers	2	55	101	156	69	96	165
Arabic Extension	1				23	32	55
Armenian Continuers	2		4	4	1	5	6
Automotive	2	26	1	27	3		3
Automotive	4	1		1			
Automotive Examination	2				1		1
Automotive Specialisation Study	2	1		1			
Biology	2	5,018	8,218	13,236	3,545	5,882	9,427
Business and Economics Life Skills	2	6	2	8			
Business Services	2	517	1,256	1,773	310	922	1,232
Business Services	4	6	6	12	6	18	24
Business Services Examination	2				201	644	845
Business Services Specialisation Study	2					2	2
Business Studies	2	5,517	5,674	11,191	3,971	3,933	7,904
Chemistry	2	4,996	4,353	9,349	3,585	2,884	6,469
Chinese Background Speakers	2	303	357	660	259	266	525
Chinese Beginners	2	21	23	44	11	25	36
Chinese Continuers	2	17	11	28	7	7	14
Chinese Extension	1					2	2
Citizenship and Legal Studies Life Skills	2	200	119	319			
Citizenship and Society Life Skills	2				425	223	648
Classical Greek Continuers	2	1		1	2		2
Community and Family Studies	2	497	5,954	6,451	283	4,052	4,335
Community Pharmacy Specialisation Study	2					5	5
Construction	2	3,368	89	3,457	1,803	30	1,833
Construction	4	81		81	39		39
Construction Examination	2				1,335	18	1,353
Creative Arts Life Skills	2	270	159	429	254	156	410
Croatian Continuers	2	2	3	5	4	6	10
Dance	2	68	893	961	37	527	564
Dance Life Skills	2	3	8	11	1	6	7
Design & Technology Life Skills	2	44	16	60			
Design and Technology	2	1,448	828	2,276	906	577	1,483
Design and Technology Life Skills	2				24	12	36
Drama	2	1,010	2,169	3,179	708	1,767	2,475
Drama Life Skills	2	15	6	21	7	10	17
Dutch Continuers	2		1	1	1	2	3
Earth and Environmental Science	2	618	579	1,197	468	406	874
Economics	2	2,214	1,498	3,712	1,541	1,065	2,606
Electrotechnology	2	31		31	9	3	12
Electrotechnology Examination	2				9	2	11
Engineering Studies	2	2,348	118	2,466	1,477	83	1,560
English (Advanced)	2	6,758	10,009	16,767	5,379	8,155	13,534
English (Standard)	2	10,923	10,219	21,142	9,696	9,709	19,405
English as a Second Language	2	1,119	1,056	2,175	1,022	871	1,893
English Extension	1	1,527	2,714	4,241			
English Extension 1	1				790	1,726	2,516
English Extension 2	1				275	771	1,046
English Life Skills	2	924	519	1,443	710	416	1,126

Table 21

## Course enrolments in Year 11 and Year 12 subjects in NSW government schools, 2012 (continued)

Course Name	Units	Year 11			Year 12		
		Male	Female	Total	Male	Female	Total
Entertainment Industry	2	497	531	1,028	334	354	688
Entertainment Industry	4					1	1
Entertainment Industry Examination	2				266	284	550
Filipino Continuers	2	10	27	37	6	5	11
Financial Services	2	3	13	16			
Food Technology	2	1,210	2,389	3,599	631	1,698	2,329
Food Technology Life Skills	2	125	77	202	80	63	143
French Beginners	2	135	608	743	97	428	525
French Continuers	2	86	328	414	94	263	357
French Extension	1				15	47	62
Fundamentals of English	2	256	248	504			
Fundamentals of English (Part 1)	1	269	333	602			
Fundamentals of English (Part 2)	1	34	39	73			
General Mathematics	2	10,528	11,043	21,571	8,942	9,303	18,245
Geography	2	1,395	1,099	2,494	1,047	820	1,867
Geography Life Skills	2	77	17	94			
German Beginners	2	33	71	104	33	61	94
German Continuers	2	71	98	169	58	92	150
German Extension	1				10	31	41
Heritage Chinese (Mandarin)	2	36	81	117	34	43	77
Heritage Indonesian	2	1		1			
Heritage Japanese	2	2	9	11	6	6	12
Heritage Korean	2	13	42	55	7	17	24
Hindi Continuers	2	2	8	10	6	6	12
History Extension	1				294	551	845
History Life Skills	2	63	15	78			
Hospitality	2	2,611	5,152	7,763	1,620	3,717	5,337
Hospitality	4	17	29	46	19	30	49
Hospitality Examination	2				1,247	2,993	4,240
Hospitality Specialisation Study	1	5	4	9	81	141	222
Hospitality Specialisation Study	2	5	5	10	17	40	57
Human Services	2	13	114	127	14	158	172
Human Services	4	1	22	23			
Human Services Examination	2				4	71	75
Human Society and its Environments Life Skills	2	191	127	318			
Hungarian Continuers	2		2	2	4		4
Indonesian Background Speakers	2	4	4	8	4	1	5
Indonesian Beginners	2	11	18	29	7	14	21
Indonesian Continuers	2	13	22	35	8	31	39
Indonesian Extension	1				1	6	7
Industrial Technology	2	5,291	600	5,891	3,029	355	3,384
Industrial Technology Life Skills	2	84	15	99	74	9	83
Information Processes and Technology	2	1,902	567	2,469	1,596	417	2,013
Information Processes and Technology Life Skills	2	55	16	71	26	8	34
Information Technology	2	1,132	317	1,449	887	220	1,107
Information Technology	4	11	1	12	27	12	39
Information Technology Examination	2				787	160	947
Information Technology Specialisation Study	1				6		6
Information Technology Specialisation Study	2				10	4	14
Information Technology Specialisation Study	4	1		1	4	1	5
Italian Beginners	2	57	198	255	41	135	176
Italian Continuers	2	35	74	109	16	61	77
Italian Extension	1				3	20	23
Japanese Background Speakers	2	8	17	25	5	5	10
Japanese Beginners	2	375	423	798	181	250	431
Japanese Continuers	2	191	424	615	153	309	462

Table 21

## Course enrolments in Year 11 and Year 12 subjects in NSW government schools, 2012 (continued)

Course Name	Units	Year 11			Year 12		
		Male	Female	Total	Male	Female	Total
Japanese Extension	1				43	84	127
Khmer Continuers	2	14	13	27	16	9	25
Korean Background Speakers	2	27	40	67	25	33	58
Korean Continuers	2	3	8	11		2	2
Latin Continuers	2	19	40	59	13	32	45
Latin Extension	1				8	17	25
Legal Studies	2	2,922	4,951	7,873	2,111	3,460	5,571
Macedonian Continuers	2	4	11	15	6	15	21
Mathematics	2	7,647	6,591	14,238	4,816	4,152	8,968
Mathematics Extension	1	3,967	3,110	7,077			
Mathematics Extension 1	2				2,985	2,153	5,138
Mathematics Extension 2	2				1,310	812	2,122
Mathematics Life Skills	2	900	494	1,394	617	369	986
Metal and Engineering	2	1,988	65	2,053	993	27	1,020
Metal and Engineering	4	8		8	19		19
Metal and Engineering Examination	2				688	21	709
Metal and Engineering Specialisation Study	2				3		3
Modern Greek Beginners	2	21	18	39	12	20	32
Modern Greek Continuers	2	14	22	36	9	25	34
Modern Greek Extension	1				2	5	7
Modern History	2	3,358	3,775	7,133	2,495	2,890	5,385
Music 1	2	2,231	1,957	4,188	1,725	1,392	3,117
Music 2	2	245	338	583	177	184	361
Music Extension	1				117	112	229
Music Life Skills	2	68	38	106	39	22	61
Persian Background Speakers	2	20	20	40	5	11	16
Personal Development, Health & PE Life Skills	2	625	317	942	490	255	745
Personal Development, Health and Physical Education	2	4,633	5,109	9,742	3,344	3,952	7,296
Physics	2	5,843	1,857	7,700	4,354	1,258	5,612
Polish Continuers	2	3	7	10	3	4	7
Portuguese Continuers	2		1	1	2	4	6
Primary Industries	2	721	393	1,114	406	305	711
Primary Industries	4	6	1	7	12	3	15
Primary Industries Examination	2				297	248	545
Primary Industries Specialisation Study	1		1	1		2	2
Primary Industries Specialisation Study	2	18		18	6	1	7
Retail Services	2	643	1,338	1,981	406	893	1,299
Retail Services	4	2	5	7	14	18	32
Retail Services Examination	2				263	582	845
Russian Background Speakers	2	6	5	11	10	3	13
Science Life Skills	2	392	202	594	271	130	401
Senior Science	2	1,486	1,213	2,699	1,815	1,481	3,296
Serbian Continuers	2	4	13	17	5	10	15
Society and Culture	2	890	3,060	3,950	468	2,100	2,568
Society and Culture Life Skills	2	18	16	34			
Software Design and Development	2	1,469	167	1,636	796	59	855
Spanish Beginners	2	36	182	218	35	105	140
Spanish Continuers	2	30	93	123	44	68	112
Spanish Extension	1				13	21	34
Studies of Religion I	1	310	408	718	133	201	334
Studies of Religion II	2	164	634	798	147	475	622
Studies of Religion Life Skills	2	3	1	4			
Swedish Continuers	2		1	1			
Tamil Continuers	2	2		2	1	2	3
Technology Life Skills	2	391	208	599	236	134	370
Textiles and Design	2	43	2,003	2,046	31	1,552	1,583

**Table 21****Course enrolments in Year 11 and Year 12 subjects in NSW government schools, 2012 (continued)**

Course Name	Units	Year 11			Year 12		
		Male	Female	Total	Male	Female	Total
Textiles and Design Life Skills	2	1	13	14	2	18	20
Tourism and Events	2	2	22	24	5	8	13
Tourism and Events Examination	2				4	4	8
Turkish Continuers	2	4	15	19	10	18	28
Ukrainian Continuers	2		2	2	2	2	4
Vietnamese Continuers	2	75	98	173	70	79	149
Visual Arts	2	2,195	5,348	7,543	1,496	3,989	5,485
Visual Arts Life Skills	2	196	129	325	106	79	185
Work and the Community Life Skills	2	671	389	1,060	468	281	749

Course Name	Units	Year 11			Year 12		
		Male	Female	Total	Male	Female	Total
Automotive School-based Apprenticeship	2	6		6	7		7
Construction School-based Apprenticeship	2	7		7	4		4
Construction School-based Apprenticeship	4	1		1			
Electrotechnology School-based Apprenticeship	2				1		1
Electrotechnology School-based Apprenticeship	4	4		4			
Hospitality School-based Apprenticeship	2	3	4	7	1		1
Hospitality School-based Apprenticeship Specialisation	1				1		1
Metal and Engineering School-based Apprenticeship	2	4		4	1		1

**Source:** Department of Education and Communities, data derived from Board of Studies data.

**Notes:**

- Based on school of tuition, board developed courses only, and includes subjects studied through distance education, the Open High School and Saturday School of Community Languages.

**Table 22**

**Apparent retention in NSW government schools, 2001-2012**

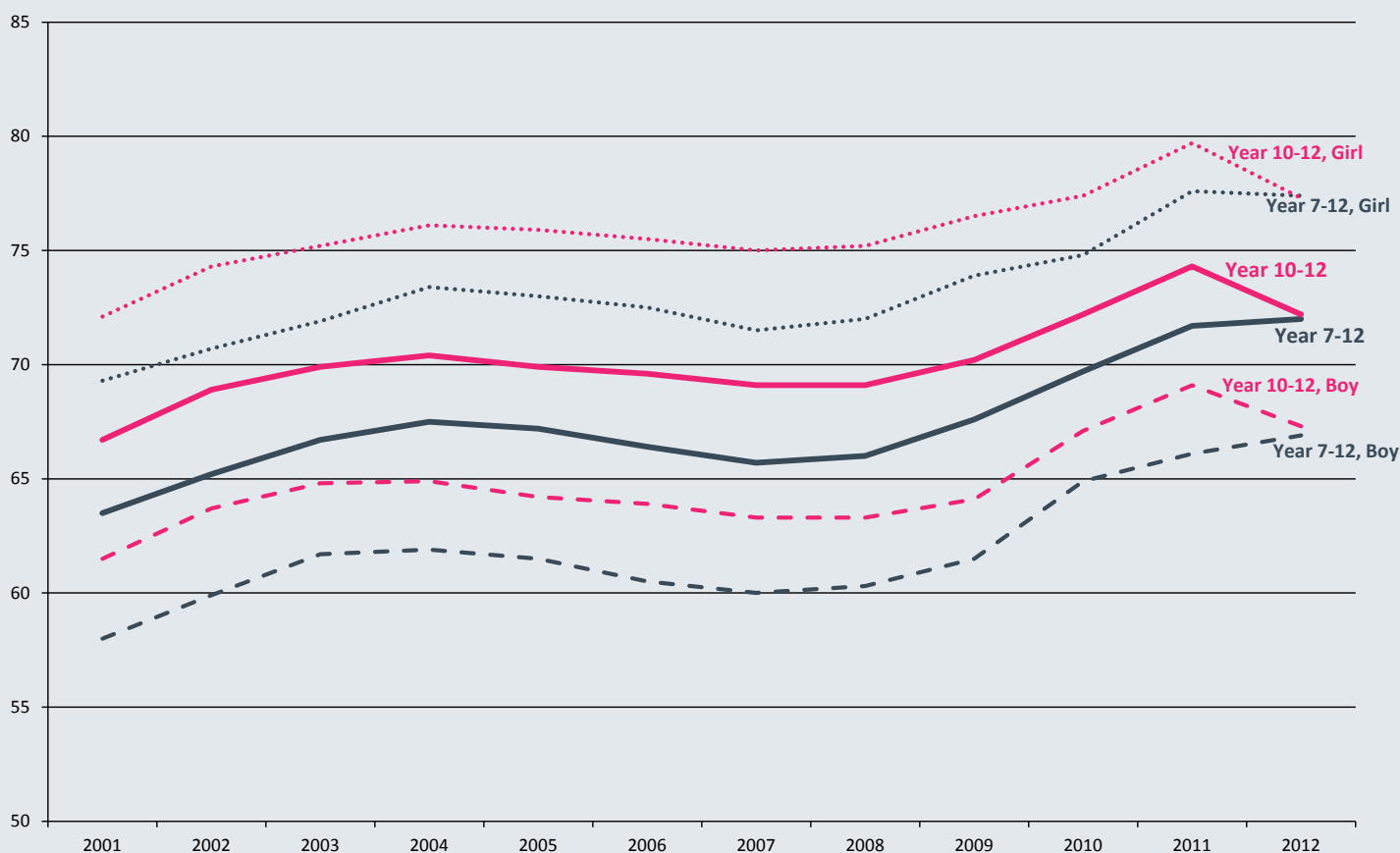
Year	Year 7-10			Year 7-11			Year 7-12			Year 10-11			Year 10-12		
	Boys	Girls	Total	Boys	Girls	Total	Boys	Girls	Total	Boys	Girls	Total	Boys	Girls	Total
2001	95.2	95.7	95.4	72.6	81.4	76.9	58.0	69.3	63.5	77.1	85.5	81.3	61.5	72.1	66.7
2002	95.4	96.4	95.9	74.8	82.8	78.7	59.9	70.7	65.2	78.6	86.6	82.5	63.7	74.3	68.9
2003	95.8	96.3	96.0	75.2	84.6	79.8	61.7	71.9	66.7	78.8	87.7	83.2	64.8	75.2	69.9
2004	94.7	96.0	95.4	74.3	83.7	78.9	61.9	73.4	67.5	77.5	87.0	82.2	64.9	76.1	70.4
2005	94.8	95.4	95.1	72.5	83.2	77.7	61.5	73.0	67.2	76.5	86.6	81.4	64.2	75.9	69.9
2006	95.2	95.8	95.5	73.1	83.1	78.0	60.5	72.5	66.4	77.1	87.1	82.0	63.9	75.5	69.6
2007	96.0	96.6	96.3	73.9	83.8	78.7	60.0	71.5	65.7	77.6	87.5	82.4	63.3	75.0	69.1
2008	96.6	96.6	96.6	73.9	84.0	78.8	60.3	72.0	66.0	77.0	86.9	81.9	63.3	75.2	69.1
2009	95.6	97.4	96.5	77.3	85.1	81.1	61.5	73.9	67.6	80.0	88.1	84.0	64.1	76.5	70.2
2010	99.4	100.2	99.8	81.1	89.7	85.3	64.9	74.8	69.7	84.8	92.2	88.4	67.1	77.4	72.2
2011	102.2	102.4	102.3	83.3	91.3	87.2	66.1	77.6	71.7	83.7	91.1	87.3	69.1	79.7	74.3
<b>2012</b>	<b>101.4</b>	<b>102.8</b>	<b>102.1</b>	<b>86.1</b>	<b>93.3</b>	<b>89.6</b>	<b>66.9</b>	<b>77.4</b>	<b>72.0</b>	<b>84.3</b>	<b>91.0</b>	<b>87.6</b>	<b>67.3</b>	<b>77.3</b>	<b>72.2</b>

**Notes:**

- All enrolments are reported in full-time equivalent units (FTEs), and include full-time and part-time students. Students enrolled in distance education classes are included with their appropriate grade levels.
- With the New School Leaving Age legislation coming into effect in January 2010, the Year 12 cohort in 2012 is the first group of students who were required to complete Year 10. This means that the Year 10 enrolment figure was higher than in previous years, resulting in a relative decline in Year 10 to Year 12 apparent retention in 2012, despite the Year 7 to Year 12 apparent retention rate increasing slightly.
- See explanatory note 9.

**Figure 6**

**Apparent retention (%) in NSW government schools, 2001-2012**



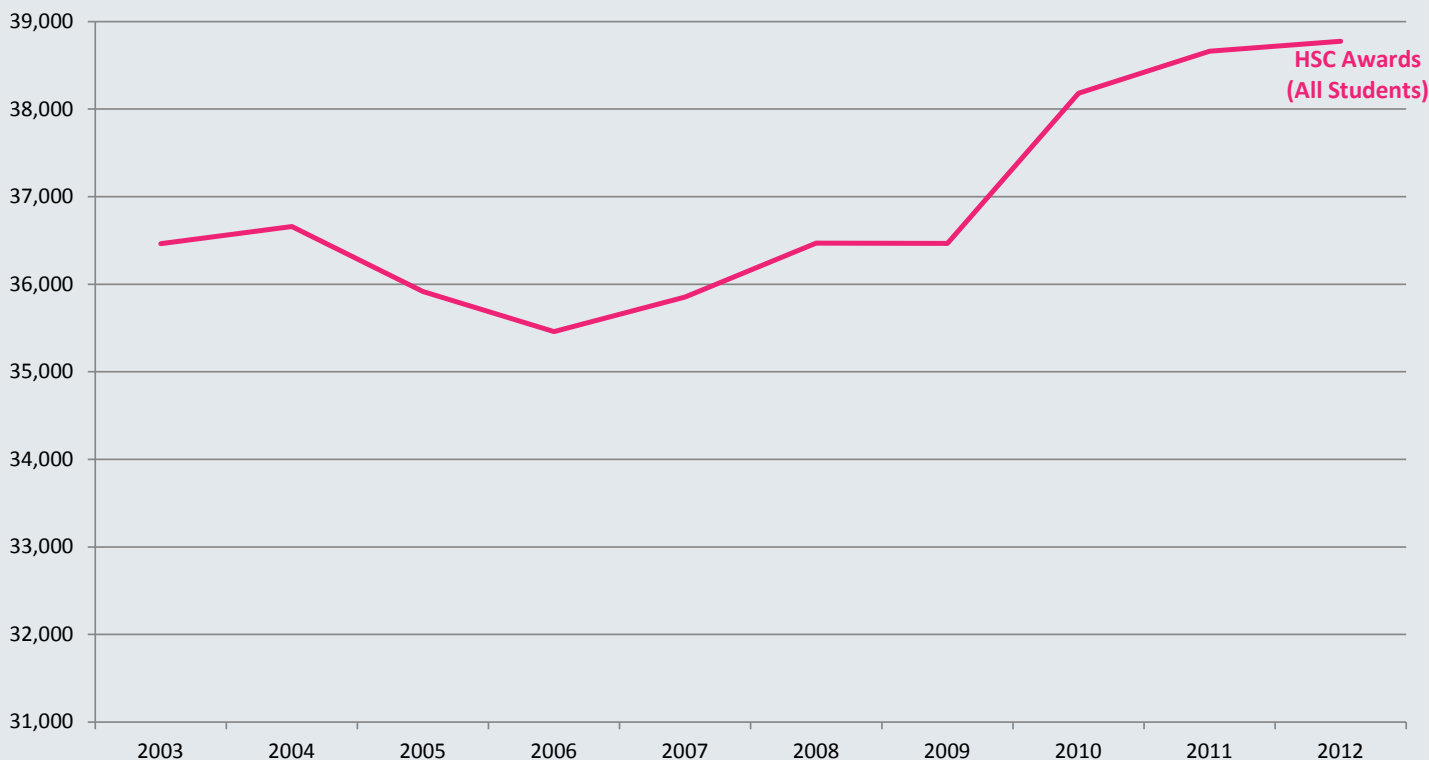
**Table 23****NSW government school HSC completions, Year 12 students only, 2003-2012**

Number of Students	2003	2004	2005	2006	2007	2008	2009	2010	2011	2012
HSC Record of Achievement (All Students)	38,579	38,883	38,175	37,739	38,275	38,815	39,164	41,347	41,987	42,452
HSC Record of Achievement (Aboriginal Students)	400	573	626	646	736	824	906	991	1,082	1,242
HSC Award (All Students)	36,463	36,660	35,917	35,460	35,854	36,468	36,465	38,181	38,661	38,774
HSC Award (Aboriginal Students)	364	528	574	603	674	755	815	862	919	1,061

**Source:** Department of Education and Communities, data derived from Board of Studies data as at January 2013.

**Notes:**

- HSC Record of Achievement includes students who participated in HSC pathways.
- HSC pathways offer a flexible program for students to complete the HSC over a period of up to five years. The pathways provisions include accumulating courses, repeating courses, acceleration, recognition of prior learning, and combining study with part-time traineeships or apprenticeships.
- Bradfield college included.
- See explanatory note 13.

**Figure 7****Number of HSC awards (all students) in NSW government schools, 2003-2012**

**Table 24**

**Student attendance rates by Aboriginality and year level, 2012**

Grade	Semester 1 (%)			Semester 2 (%)			Full Year (%)		
	Aboriginal	Non-Aboriginal	All Students	Aboriginal	Non-Aboriginal	All Students	Aboriginal	Non-Aboriginal	All Students
Year 1	89.6	94.2	93.9	88.6	93.5	93.2	89.2	93.9	93.6
Year 2	90.3	94.5	94.2	89.2	93.6	93.4	89.8	94.1	93.8
Year 3	90.5	94.7	94.4	89.2	93.7	93.4	89.9	94.2	94.0
Year 4	90.0	94.6	94.3	88.9	93.5	93.2	89.5	94.1	93.8
Year 5	89.9	94.4	94.2	88.3	93.4	93.1	89.2	94.0	93.7
Year 6	89.6	94.1	93.8	87.7	93.0	92.7	88.7	93.6	93.3
Primary Support	87.9	91.7	91.1	85.3	90.7	89.9	86.7	91.2	90.6
<b>Primary Total</b>	<b>89.9</b>	<b>94.4</b>	<b>94.1</b>	<b>88.5</b>	<b>93.4</b>	<b>93.1</b>	<b>89.3</b>	<b>93.9</b>	<b>93.6</b>
Year 7	85.5	92.9	92.4	82.0	91.8	91.1	83.9	92.4	91.8
Year 8	81.5	90.7	90.1	78.8	89.9	89.2	80.3	90.4	89.7
Year 9	77.6	89.5	88.7	74.4	88.2	87.3	76.2	88.9	88.0
Year 10	74.6	87.9	87.0	71.9	86.8	85.9	73.4	87.4	86.5
Secondary Support	73.5	84.9	83.1	71.8	84.0	82.2	72.7	84.5	82.7
<b>Secondary Total</b>	<b>79.4</b>	<b>90.1</b>	<b>89.3</b>	<b>76.5</b>	<b>89.0</b>	<b>88.2</b>	<b>78.1</b>	<b>89.6</b>	<b>88.8</b>
<b>Yr1-Yr10 (Inc. Support)</b>	<b>85.7</b>	<b>92.8</b>	<b>92.3</b>	<b>83.8</b>	<b>91.8</b>	<b>91.3</b>	<b>84.9</b>	<b>92.3</b>	<b>91.9</b>

**Notes:**

- The attendance data are for full-time, Year 1-10 students only.
- All students in Years 1 to 10 in NSW Government Schools are regarded as full-time.
- Ungraded students in NSW Government Schools are classified as either primary or secondary according to their level of education.
- For more detailed analysis of Semester 1 school attendance, please refer to **CESE Bulletin Issue 3 - Attendance Semester 1, 2012**.
- See explanatory note 11.

# Explanatory Notes

Each year the education departments of all states and territories in Australia, and the Commonwealth Department of Education, Employment and Workplace Relations collect data on Government and Non-Government schools, and their students. Since 1994 the date for collection has been the first Friday in August, as close as possible with the national Census of Population and Housing conducted every five years. The 2012 census of NSW Government schools was conducted on August 3rd. Initial results were published in Inbrief Mid-year Census, 2012.

In 1996, there were changes to the collection dates for some of the information reported in this bulletin. Data on students by age, gender and year of schooling, for all students and for Aboriginal and Torres Strait Islander students, are collected at the midyear census. Data on students of non-English speaking background are collected in Term 1.

This Bulletin consolidates data from DEC Term 1 and midyear data collections. It also reports on Non-Government data collected by the Commonwealth Department of Education, Employment and Workplace Relations.

Government and Non-Government school data form part of the National Schools Statistics Collection which is reported annually by the Australian Bureau of Statistics in Schools Australia (Catalogue No. 4221.0).

## 1. Primary and Secondary Schools

Primary schools enrol students in Kindergarten to Year 6; secondary schools generally enrol students in Years 7 to 12, although some secondary schools only enrol students in the senior years, i.e. Years 10 to 12.

## 2. Central/Community Schools

Central/community schools have primary and secondary departments and may be established where there is an enrolment in secondary classes of 20 or more. Enrolments in primary departments and secondary departments are included with the appropriate student data.

## 3. Schools for Specific Purposes

Schools for specific purposes (SSPs) are for students with specific needs. Students in SSPs are not assigned to a year of schooling but are reported according to their type of specific need. Students with multiple disabilities are reported according to their main disability.

Most schools for specific purposes have permanent enrolments and include schools for students with intellectual (mild, moderate and severe) and physical disabilities, visual or hearing impairment, behaviour disorders or emotional disturbance, and students in juvenile justice centres. Some SSPs have no permanent enrolments because the children temporarily attending them are enrolled and counted in their own schools. These are mainly hospital schools.

## 4. Support Classes

Some students with specific needs are enrolled in support classes in primary, secondary and central schools. Students enrolled in support classes are not enrolled in a particular year of schooling but are reported separately according to their type of specific need. Support classes for students of mixed abilities are classified according to the predominant type of specific need present in the class. Support class enrolments are included with other primary and secondary enrolments in some tables; other tables combine enrolments in support classes in ordinary schools with enrolments in SSPs.

## 5. Distance Education

Distance education centres (DECs) provide schooling for students who are isolated or whose special circumstances prevent them from attending a regular school. They operate either as separate schools or as units within regular primary, central and high schools. Students enrolled in DECs are counted in their corresponding years of schooling.

In conjunction with the Open High School, DECs also provide individual subject enrolment, widening study opportunities for secondary students. These students are enrolled and counted at their home schools.

## 6. Part-time Students

Students in Years 11 or 12 can enrol to study as a part-time student or a full-time student. For the annual census, a part-time student is enrolled in less than 10 units, regardless of where those units are studied. All K to Year 10 students are considered to be full-time.

## 7. Full-time Equivalent Enrolments

Following the introduction of part-time study in secondary schools in 1993, student enrolments are generally reported in full-time equivalent units (FTE). The FTE for students studying less than 10 units, the minimum workload, is determined by the formula:  $0.1 \times$  the number of units studied and represented as a proportion of the full-time enrolment of 1.0 FTE.

## 8. Aboriginal and Torres Strait Islander Students

Students are counted as Aboriginal or Torres Strait Islanders (A&TSI) if they are identified and accepted as such by the community with which they are associated, and they identify themselves on the School Enrolment Form

## 9. Apparent Retention Rates (ARR)

Retention rates are 'apparent' as they do not track individual students through their final years of secondary schooling. What they measure is the ratio of the total number of full-time school students in a designated year (eg Year 12 in 2010) divided by the total number of full-time students in a previous year (eg Year 7 in 2005). This would be the Year 7 to 12



apparent retention rate in 2010. Apparent retention rates can exceed 100% due to a number of factors including migration of students from interstate and overseas and between school sectors.

Care should be taken in the interpretation of apparent retention rates, because they do not take account of factors such as migration, interstate movements of students, transfers to and from non-government schools, part-time schooling, students repeating a year of schooling, or students pursuing other education and training pathways.

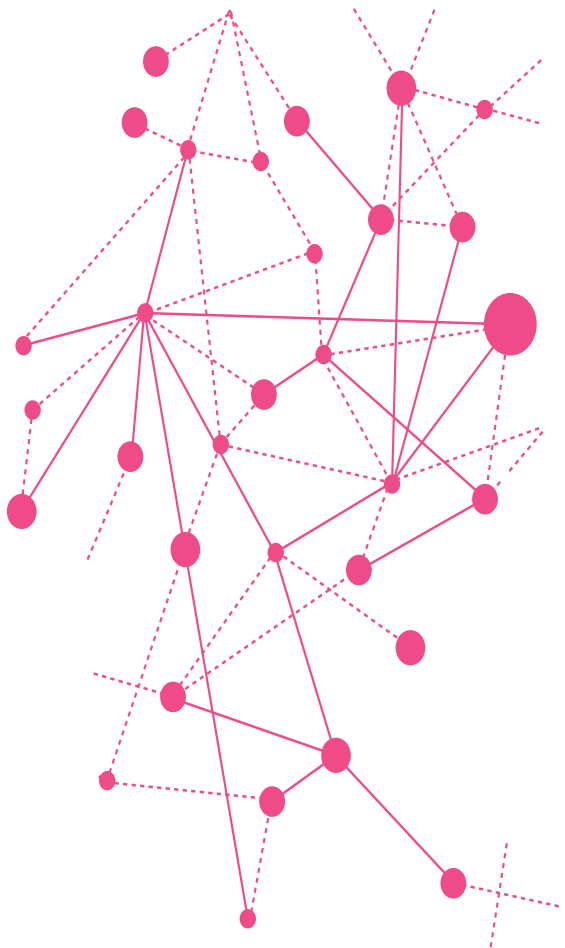
## 10. Students of Language Background other than English

Students are counted as being of language background other than English (LBOTE) if in their home a language other than English is spoken by the students, parents or guardians.

## 11. Attendance

Government school systems in Australia measure attendance rates throughout the first semester (terms 1 and 2). This is the time period specified for data collection in National Education Agreements between the Commonwealth and state and territory governments. Schools for Special Purposes' attendance data is not collected.

The attendance rate is defined as the number of actual full time equivalent 'student days attended' over the collection period as a percentage of the total number of possible student days attended over the collection period (Measurement Framework for Schooling in Australia KPM 7(b)).



## 12. Class Size

The audit of class sizes in NSW government primary schools is undertaken in March each year. The audit does not include schools for specific purposes, distance education centres or intensive English centres.

The number of classes, average class sizes and enrolment numbers exclude support classes in primary and central schools.

## 13. Higher School Certificate (HSC)

The Higher School Certificate (HSC) is the highest educational award in secondary education in New South Wales. It is awarded to students who have satisfactorily completed Years 11 and 12 at secondary school. To be eligible, students must meet HSC course requirements and sit for the statewide HSC examinations.

## 14. Country Area Program (CAP)

The NSW Country Areas Program assists schools and their communities to enhance the learning and educational opportunities for students living in remote areas.

## 15. Priority Schools Funding Program (PSFP)

The Priority Schools Funding Program (PSFP) provides additional assistance to school communities to reduce the achievement gap for students in schools with high concentrations of students from low socio-economic status backgrounds.

The PSFP focuses on improving students' literacy, numeracy and participation outcomes. The activities of the PSFP include professional learning for teachers and community members, resource materials development, research and sharing of effective practice in local networks of Priority Schools.

## 16. Colleges

The secondary schools in some areas have been transformed into colleges in order to provide broader opportunities and better facilities for students. A college is the amalgamation of all the secondary schools within a specific area. Each former secondary school has become a campus of their college. A senior college campus is generally for students in Years 11 and 12 but in some cases, may include Year 10 students. The colleges have formed cooperative ventures with TAFE Institutes and universities. They offer a wide range of options from specialist senior Higher School Certificate courses to school re-entry courses.

### Contact Details

For more information about the Centre for Education Statistics and Evaluation, please contact us:

E [cese@det.nsw.edu.au](mailto:cese@det.nsw.edu.au)

W [www.cese.nsw.gov.au](http://www.cese.nsw.gov.au)

Centre for Education Statistics and Evaluation  
Office of Education  
GPO Box 33  
Sydney NSW 2001  
Australia  
T 02 9561 1220  
E [cese@det.nsw.edu.au](mailto:cese@det.nsw.edu.au)  
[www.cese.nsw.gov.au](http://www.cese.nsw.gov.au)

December 2013  
NSW Department of Education and Communities

