

Schools: InBrief Mid-Year Census 2014

Centre for Education Statistics and Evaluation

InBrief summarises the results of the census of students in NSW government schools undertaken on Friday 1 August 2014, and the census of NSW non-government schools undertaken by the Australian Government Department of Education on the same day.

Mid-year Census

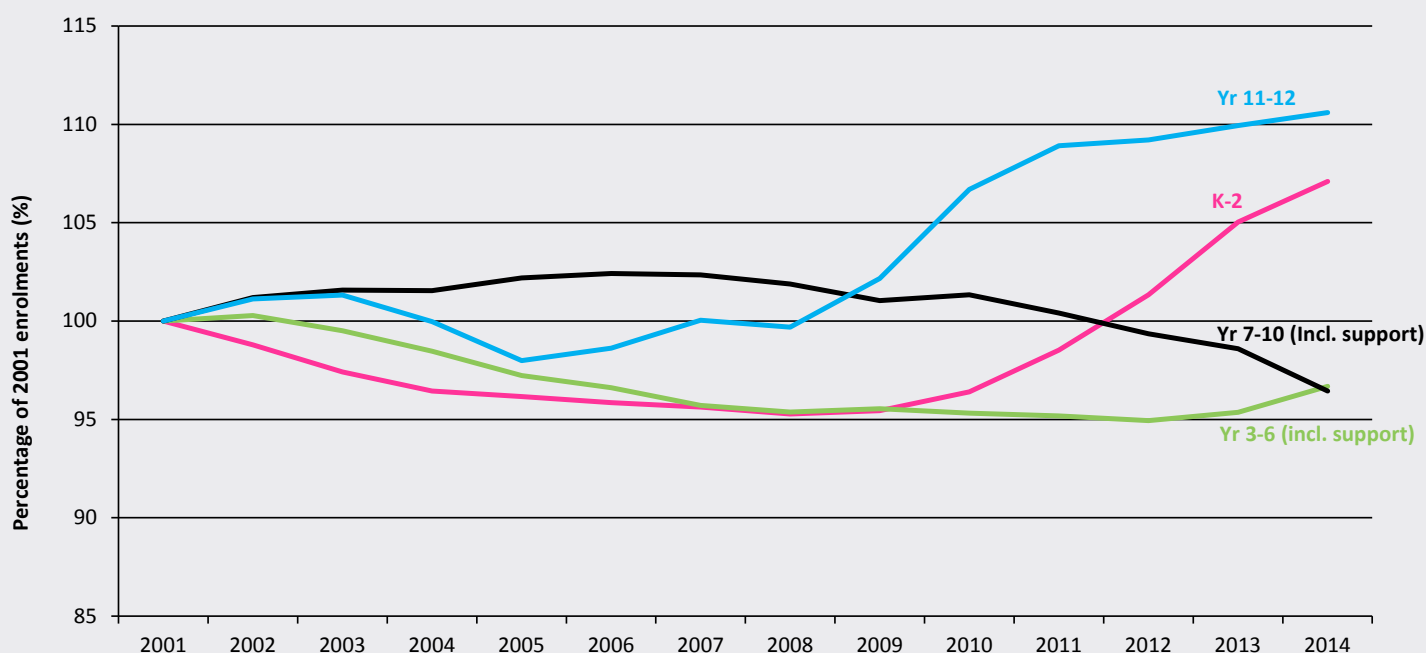
The Mid-year Census includes data on NSW Government schools (preschool, primary, secondary, central/community and special) and students (age at 1 July, grades, full time, part time, gender, and Aboriginality).

2014 enrolments (FTE)

Figure 1 shows government school enrolments as a proportion of 2001 total enrolments. Since 2008 enrolments in Years 11 and 12 have been rising and now represent 111 per cent of 2001 enrolments. This has coincided with the raising of the school leaving age in 2010.

Figure 1

NSW government school enrolments (FTE) as a proportion of total 2001 enrolments (FTE) by grade groups



2014 InBrief summary

NSW government

Full-time equivalent (FTE) enrolments

Primary enrolments	456,151.0
Secondary enrolments	302,339.7
SSP enrolments	5,207.0
Total enrolments	763,697.7

Aboriginal and Torres Strait Islander students

Total Aboriginal & Torres Strait Islander enrolments	51,612.6
Per cent Aboriginal & Torres Strait Islander enrolments	6.8%

Part-time students

Number of part-time students	2,383.0
FTE enrolments	1,453.7

Preschool Students

Number of preschool students	4,415.0
FTE enrolments	2,428.3

NSW non-government

Full-time equivalent (FTE) enrolments

Primary enrolments	200,688.7
Secondary enrolments	203,934.4
Total enrolments	404,623.1

NSW government schools

Primary schools	1,600
Separate infants schools	17
Central/community schools	67
Secondary schools	398
Schools for specific purposes (SSPs)	114
Environmental education centres (EECs)	23
Total government schools	2,219

Preschools attached to primary/infants schools	99
Separate preschools	1
Total preschools	100

NSW non-government schools

Primary schools	491
Secondary schools	144
Primary/secondary schools	237
Special schools	46
Total non-government schools	918

Kindergarten to Year 2 enrolments have increased markedly since 2009 and now represent 107 per cent of 2001 enrolments. These additional enrolments are the result of demographic changes, with larger numbers of children born in NSW since 2005.

In 2014, the proportion of Year 3 to Year 6 and Year 7 to Year 10 were both under 100 per cent of 2001 enrolments. However enrolments in Year 3 to Year 6 increased compared with 2013, whereas year 7 to 10 enrolments continued to decline. While demographic changes account for some of the reduction in Year 3 to Year 6 since 2001, the recent decline in Year 7 to Year 10 enrolments at government schools was not evident in non-government schools.

The total number of full-time equivalent students in NSW government schools increased by 8,352.1 or 1.1 per cent, from 755,345.6 in 2013 to 763,697.7 in 2014. This is the sixth year in a row that government enrolments have increased after a sustained downward trend between 1998 and 2008. This is also the biggest increase over the last two decades. Primary enrolments increased by 9,303 in 2014 while secondary enrolments continued to decline, decreasing by 1,093.9 in 2014.

Table 1

Enrolments (FTE) in NSW government schools, 1994-2014

Year	Primary	Secondary	SSP	Total
1994	445,599	306,716.6	3,798	756,113.6
1995	446,722	305,395.6	3,789	755,906.6
1996	450,465	306,823.3	3,749	761,037.3
1997	451,560	308,922.7	3,690	764,172.7
1998	452,568	309,133.7	3,673	765,374.7
1999	453,454	308,116.1	3,762	765,332.1
2000	454,363	303,681.0	3,792	761,836.0
2001	451,093	301,774.4	3,873	756,740.4
2002	447,897	302,988.0	3,915	754,800.0
2003	443,213	304,034.0	3,938	751,185.0
2004	438,677	302,849.6	3,981	745,507.6
2005	434,876	302,578.3	4,124	741,578.3
2006	432,660	303,622.0	4,133	740,415.0
2007	429,900	304,457.7	4,278	738,635.7
2008	428,331	303,055.7	4,392	735,778.7
2009	429,000	303,180.7	4,466	736,646.7
2010	430,177	307,291.2	4,673	742,141.2
2011	433,873	306,893.2	4,774	745,540.2
2012	438,681	304,632.1	4,921	748,234.1
2013	446,848	303,433.6	5,064	755,345.6
2014	456,151	302,339.7	5,207	763,697.7

Note: Since 1993 some students have enrolled part-time. All enrolments are reported in full-time equivalent units (FTEs) and include full-time and part-time students.

Enrolments in NSW government schools are affected by a number of factors, including the school age population, the participation rate and the enrolment share between government and non-government schools. For students of school age (5 to 17 inclusive), the participation rate is close to 100 per cent; however, after this age it declines noticeably.

Kindergarten enrolments decreased slightly by 799 students, or 1.1 per cent, in 2014. This is the first decline in Kindergarten enrolments following six years of increases from 2008 to 2013. Kindergarten enrolments generally reflect the NSW birth rate five years previously.

The largest increases in enrolments were in Year 2 and Year 3. Year 2 enrolments rose by 4.4 per cent from 64,666 students in 2013 to 67,524 in 2014 while Year 3 enrolments rose by 4.8 per cent from 61,263 students in 2013 to 64,206 in 2014. This is due to the progression of increased numbers of Kindergarten students enrolled in 2011 and 2012.

Enrolments (FTE) by ABS statistical area

Previous publications of the Mid-year Census compared enrolments in the Department's former regions. From 2014 this classification has been discontinued and replaced with a geographical structure based on the Australian Statistical Geography Standard (ASGS). The ASGS is maintained by

the Australian Bureau of Statistics and allows comparison of education statistics with other statistical data.

ASGS Statistical Area 4 (SA4) boundaries in New South Wales have been combined into 11 groups for reporting and publication of Department data. Table 2 shows enrolments in NSW government schools by grade groups and ABS statistical area groupings.

In 2014 56.5 per cent of government students were enrolled in schools within the Sydney area. The proportion of primary students enrolled in Sydney schools was a little higher at 57.8 per cent.

All statistical area groupings experienced an increase in primary enrolments in 2014. Sydney-North and Sydney-West recorded the largest growth in primary enrolments, with over 1,700 additional enrolments between 2013 and 2014.

For secondary enrolments only three statistical area groupings recorded an increase in enrolments. Sydney-North and Sydney-Inner increased by 1.0 per cent while Sydney-North West increased by 0.5 per cent. Secondary enrolments were stable in South East NSW while all other statistical area groupings recorded a decline of between 0.2 and 1.8 per cent.

As Map 1 illustrates, the areas of Sydney-North and Sydney-South West have the highest number of enrolments, with 80,875.7 and 82,868.3 enrolments respectively.

Table 2

Enrolments (FTE) by ABS statistical area 4 groupings and grade groups in NSW government schools, mid-year 2014

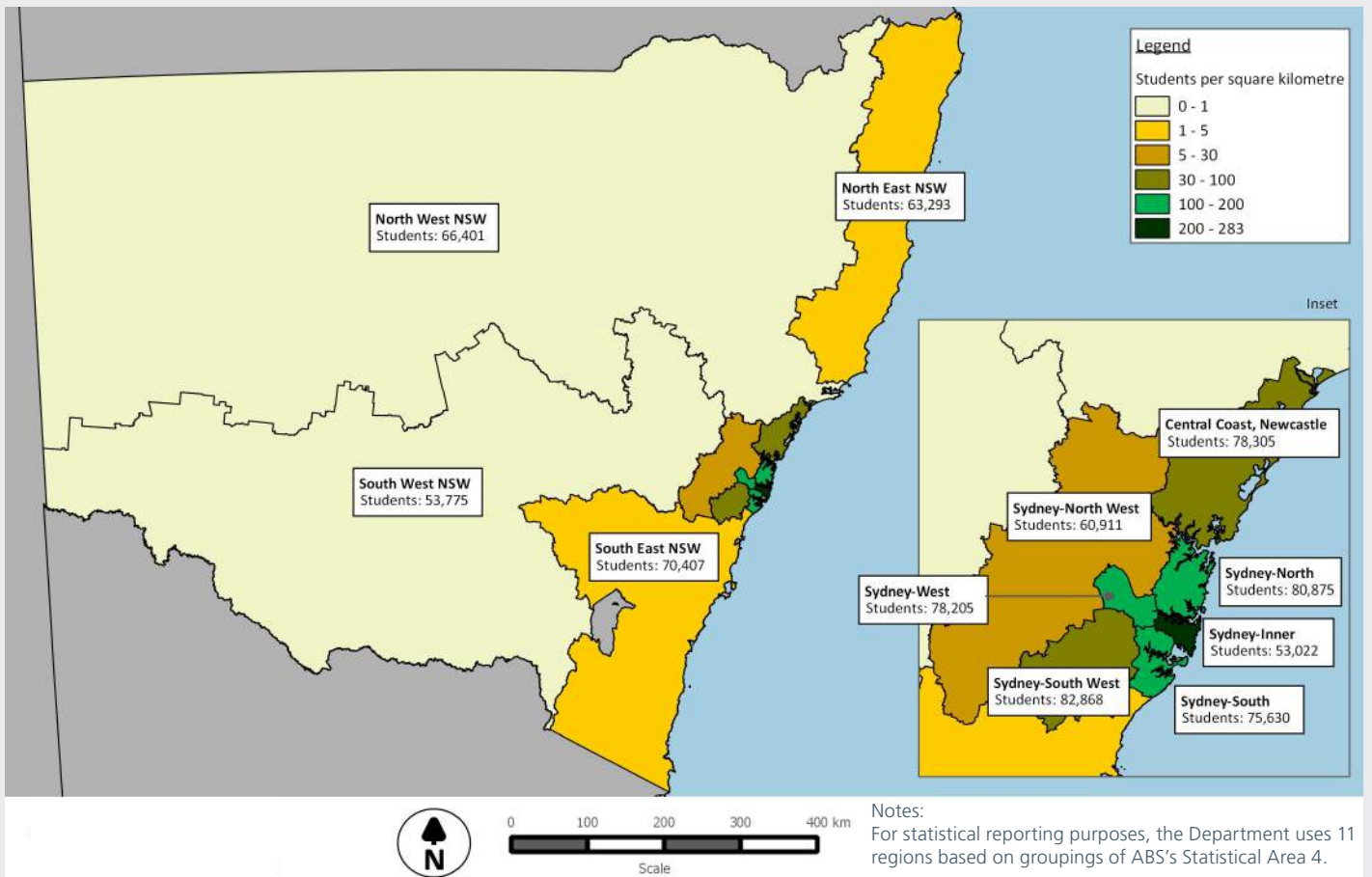
Statistical Area 4 Grouping	K-2	Yr3-6	Primary Total	Yr7-10	Yr11-12	Secondary Total	SSP	Statistical Area Total	% of NSW
Sydney-North	24,838	27,818	52,656	18,498	9,307.7	27,805.7	414	80,875.7	10.6%
Sydney-Inner	15,969	16,512	32,481	13,644	6,546.8	20,190.8	351	53,022.8	6.9%
Sydney-South	20,324	24,943	45,267	20,486	9,183.3	29,669.3	694	75,630.3	9.9%
Sydney-South West	20,841	26,984	47,825	24,180	10,177.3	34,357.3	686	82,868.3	10.9%
Sydney-West	22,986	26,620	49,606	19,575	8,051.4	27,626.4	973	78,205.4	10.2%
Sydney-North West	15,902	20,138	36,040	17,098	7,484.3	24,582.3	289	60,911.3	8.0%
Sydney Total	120,860	143,015	263,875	113,481	50,750.8	164,231.8	3,407	431,513.8	56.5%
North East NSW	15,543	20,106	35,649	19,923	7,610.5	27,533.5	111	63,293.5	8.3%
North West NSW	17,734	21,847	39,581	19,806	6,804.7	26,610.7	210	66,401.7	8.7%
South West NSW	13,756	17,450	31,206	16,015	6,061.9	22,076.9	493	53,775.9	7.0%
South East NSW	18,294	23,357	41,651	20,686	7,715.2	28,401.2	355	70,407.2	9.2%
Central Coast, Newcastle	19,572	24,617	44,189	24,155	9,330.6	33,485.6	631	78,305.6	10.3%
Regional Total	84,899	107,377	192,276	100,585	37,522.9	138,107.9	1,800	332,183.9	43.5%
NSW	205,759	250,392	456,151	214,066	88,273.7	302,339.7	5,207	763,697.7	100.0%

Notes:

- Students in Distance Education and Opportunity Classes (OC) are included with their appropriate grade levels.
- Aggregate geographical data are reported by groupings of ABS statistical area 4 (refer to the maps).
- Primary support students are included in Year 3 to 6. Secondary support students are included in Year 7 to 10.

Map 1

Enrolments (FTE) by statistical area 4 groups



Aboriginal enrolments (FTE)

Table 3 shows enrolments of Aboriginal students by grade groups and statistical area groupings, and Figure 2 illustrates this comparison.

The majority (76.9 per cent) of Aboriginal students are enrolled outside of Sydney. Although the six Sydney statistical area groupings account for 56.5 per cent of all enrolments in NSW, only 23.1 per cent of total NSW Aboriginal enrolments are enrolled in Sydney.

North West NSW and North East NSW had the highest Aboriginal enrolments at 25.7 and 15.8 per cent respectively.

In Sydney, the statistical area groupings of Sydney-South West and Sydney-West had relatively higher Aboriginal student enrolments, at 6.6 per cent and 6.0 per cent of total Aboriginal enrolments respectively. In contrast, Sydney North only had 0.7 per cent of Aboriginal enrolments, compared with 10.6 per cent of all students.

Overall, Aboriginal student enrolments have increased by 2,304 students or 5.0 per cent from 49,308.4 in 2013 to 51,612.6 in 2014. The Central Coast recorded the largest increase of 422.2 students, from 5,669.7 in 2013 to 6,091.9 in 2014.

Table 3

Enrolments (FTE) of Aboriginal students by ABS statistical area groupings and grade groups in NSW government schools, mid-year 2014

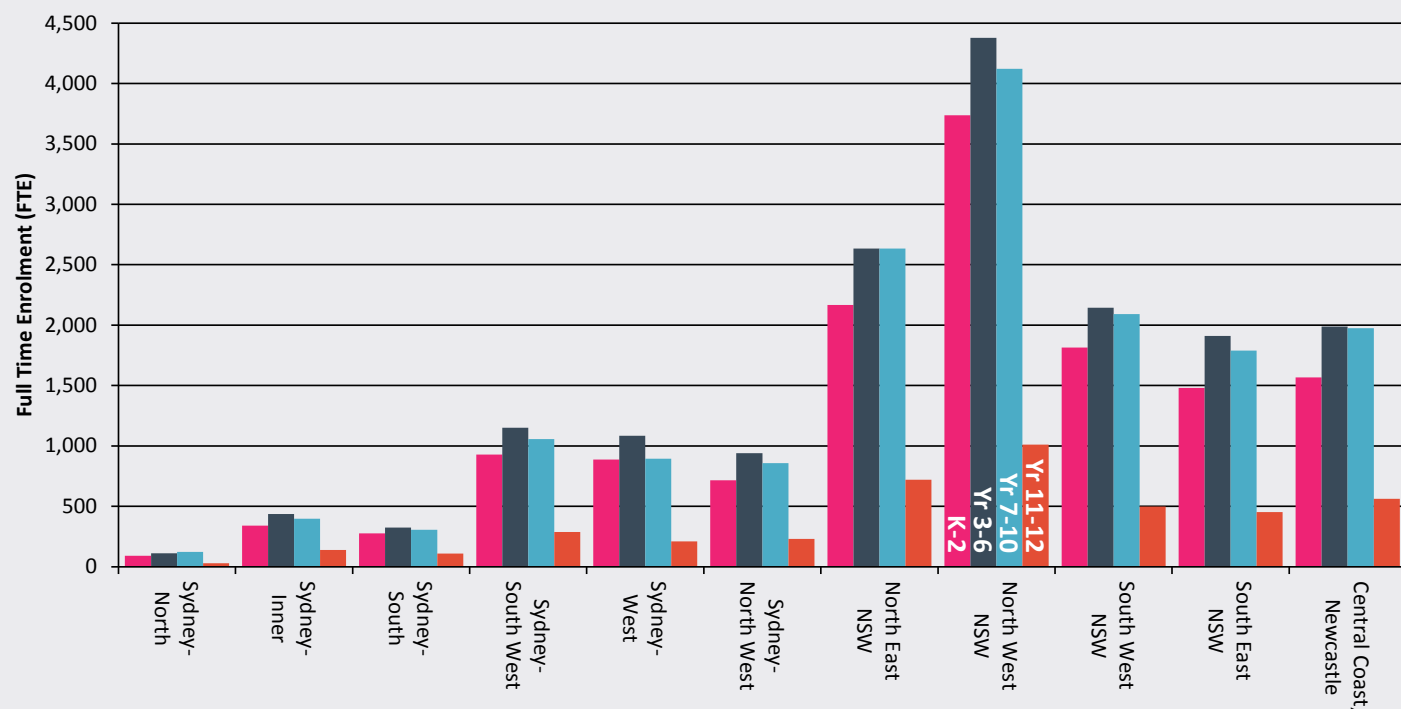
Statistical Area 4 Grouping	K-2	Yr3-6	Primary Total	Yr7-10	Yr11-12	Secondary Total	Statistical Area Total	% of NSW
Sydney-North	91	113	204	123	28.8	151.8	355.8	0.7%
Sydney-Inner	340	438	778	398	138.8	536.8	1,314.8	2.5%
Sydney-South	276	325	601	306	108.8	414.8	1,015.8	2.0%
Sydney-South West	928	1,152	2,080	1,056	288.4	1,344.4	3,424.4	6.6%
Sydney-West	887	1,084	1,971	895	210.4	1,105.4	3,076.4	6.0%
Sydney-North West	717	941	1,658	859	231.2	1,090.2	2,748.2	5.3%
Sydney Total	3,239	4,053	7,292	3,637	1,006.4	4,643.4	11,935.4	23.1%
North East NSW	2,168	2,634	4,802	2,633	719.9	3,352.9	8,154.9	15.8%
North West NSW	3,737	4,377	8,114	4,122	1,011.9	5,133.9	13,247.9	25.7%
South West NSW	1,814	2,143	3,957	2,092	499.6	2,591.6	6,548.6	12.7%
South East NSW	1,481	1,911	3,392	1,789	452.9	2,241.9	5,633.9	10.9%
Central Coast, Newcastle	1,568	1,988	3,556	1,974	561.9	2,535.9	6,091.9	11.8%
Regional Total	10,768	13,053	23,821	12,610	3,246.2	15,856.2	39,677.2	76.9%
NSW	14,007	17,106	31,113	16,247	4,252.6	20,499.6	51,612.6	100.0%
As % of grade group	6.8%	6.8%	6.8%	7.6%	4.8%	6.8%	6.8%	

Notes:

- Students in Distance Education and Opportunity Classes (OC) are included with their appropriate grade levels.
- Aggregate geographical data are reported by groupings of ABS statistical area 4 (refer to the maps).
- Primary support students are included in Year 3 to 6. Secondary support students are included in Year 7 to 10.

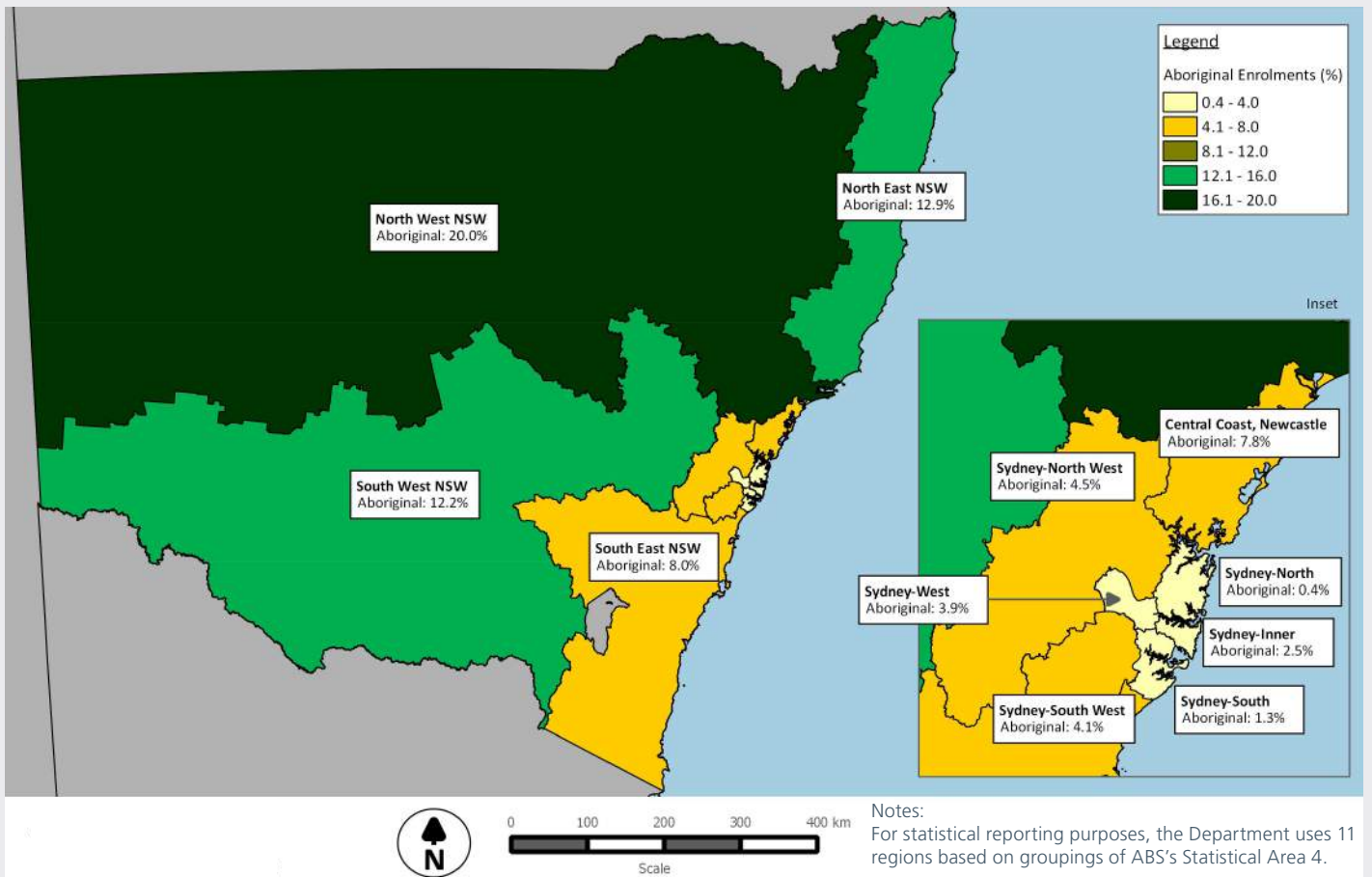
Figure 2

Enrolments (FTE) of Aboriginal students by ABS statistical area groupings and grade groups in NSW government schools, mid-year 2014



Map 2

Percentage of enrolments (FTE) identified as Aboriginal by statistical area 4 groups



Map 2 shows the percentage of students in each statistical area grouping who identify as Aboriginal. Twenty per cent of students in North West NSW identify as Aboriginal, compared to less than five per cent in each statistical area grouping in Sydney.

Government enrolment share (FTE)

Table 4 shows the enrolment share for students at government and non-government schools in NSW. The increase in total enrolments by 8,352 at NSW government schools in 2014 was the highest over the last two decades. However, despite the record growth in government school enrolments in 2014, government enrolment share remained at the same historically low figure set in 2013. This is due to an equivalently large rate of enrolment growth in non-government schools in 2014.

Since 2004, total government enrolment share fell on average around 0.2 percentage points each year, except in 2010 when enrolment share remained unchanged at 66.2 per cent.

This was due to the rate of enrolment growth of government schools outpacing that of non-government schools in 2010. From 2010 onwards the enrolment share continued to tend downwards.

Figure 3 shows NSW government enrolment share by education level. Primary enrolment share has remained steady since 2008 and is generally 7 to 8 percentage points higher than secondary enrolment share. Within primary education, Kindergarten to Year 2 enrolment share rose from 70.2 per cent in 2013 to 70.4 in 2014, and Year 3 to Year 6 increased from 68.6 per cent in 2013 to 68.8 in 2014.

In 2014, junior secondary enrolment share continued its gradual decline, and is now similar to senior secondary enrolment share. In 2008, junior secondary enrolment share was 63.1 per cent, 3.6 per cent higher than senior secondary enrolment share of 59.5 per cent. By 2014 the enrolments share was very similar, at 60.0 per cent for junior secondary and 59.8 per cent for senior secondary enrolments.

Figure 3

NSW government enrolments (FTE) share, 2004-2014

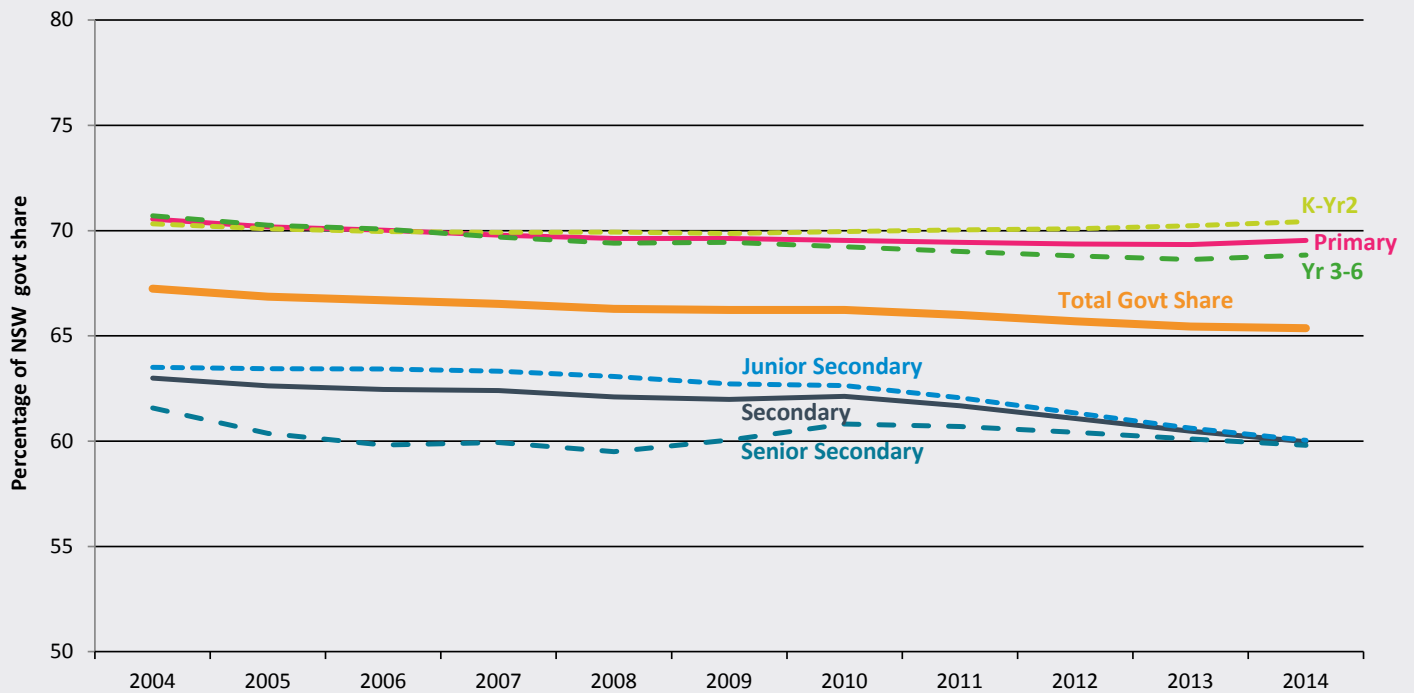


Figure 4 shows the change in enrolments of government and non-government schools in each year since 2004.

Overall enrolments in NSW have increased by more than 8,000 each year since 2010, and by more than 14,000 in each of the last two years. Since 2008, the total number of students enrolled in education in NSW has increased by 58,371 students. The significant annual increase in school enrolments observed in 2010 coincided with changes to the NSW school leaving age.

For the first time since 2010, the enrolment growth of government schools surpassed the enrolment growth of non-government schools. Government enrolments increased by 8,352, compared with an increase of 5,810 for non-government schools. The growth in government enrolments is largely driven by a significant increase in government primary school enrolments, by 9,371 students in 2014.

Table 4

Enrolments (FTE) in NSW government and non-government schools, 1901-2014

Year	Government		Non-government		Total
	Enrolment	Share	Enrolment	Share	
1901	210,588	77.6%	60,837	22.4%	271,425
1911	221,810	78.3%	61,550	21.7%	283,360
1921	315,228	80.1%	78,460	19.9%	393,688
1931	387,881	80.8%	92,285	19.2%	480,166
1941	337,073	76.2%	105,319	23.8%	442,392
1951	405,906	75.3%	133,019	24.7%	538,925
1961	610,883	75.2%	201,147	24.8%	812,030
1971	771,713	77.6%	222,195	22.4%	993,908
1981	790,575	76.9%	237,853	23.1%	1,028,428
1986	755,257	73.6%	270,745	26.4%	1,026,011
1991	746,417	72.0%	290,896	28.0%	1,037,313
1996	761,037	71.4%	305,383	28.6%	1,066,420
2003	751,185	67.7%	357,716	32.3%	1,108,901
2004	745,508	67.2%	363,090	32.8%	1,108,598
2005	741,578	66.9%	367,476	33.1%	1,109,054
2006	740,415	66.7%	369,902	33.3%	1,110,317
2007	738,636	66.5%	371,822	33.5%	1,110,458
2008	735,779	66.3%	374,171	33.7%	1,109,950
2009	736,647	66.2%	375,522	33.8%	1,112,169
2010	742,141	66.2%	378,289	33.8%	1,120,430
2011	745,540	66.0%	384,209	34.0%	1,129,749
2012	748,234	65.7%	390,756	34.3%	1,138,990
2013	755,346	65.4%	398,813	34.6%	1,154,159
2014	763,698	65.4%	404,623	34.6%	1,168,321

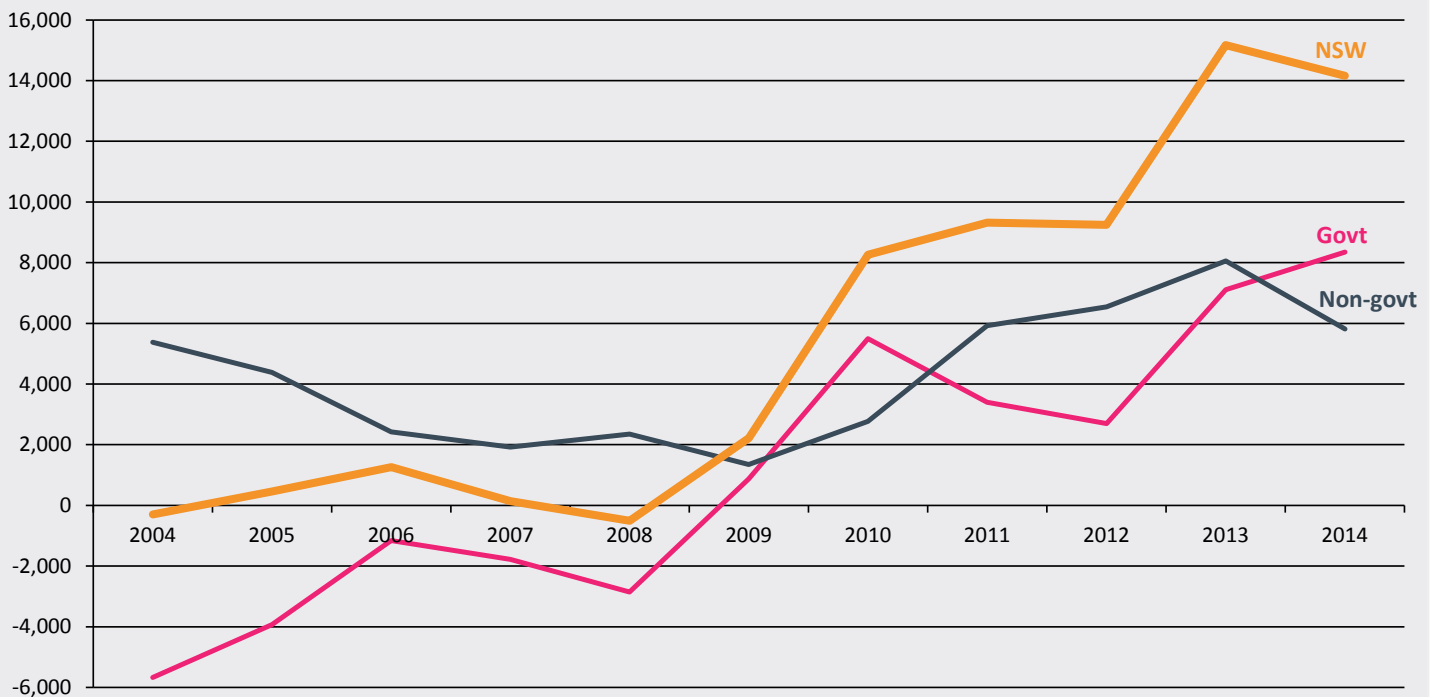
Source: Australian Bureau of Statistics, Schools Australia 2014

Notes:

- Government and non-government school data for 1901-1961 include students in ACT schools.
- From 1993 the table includes full-time and part-time students, reported in full-time equivalent units (FTE).

Figure 4

K-12 student enrolment (FTE) change in NSW government and non-government schools, 2004-2014



Apparent retention rate

Apparent retention measures the proportion of students who remain at school through to Year 10, 11 or 12 and is one measure of students' engagement with education. For example, the Year 7-10 apparent retention rate in 2014 is the percentage of Year 10 enrolments in 2014 compared to Year 7 enrolments from 2011. Retention is affected by legal and policy changes such as the new school leaving age legislation.

Table 5 and Figure 5 show that the apparent retention rate increased for all cohort groupings in 2014. Notably, it is the first time over 90 per cent of Year 10 students have enrolled in Year 11. The apparent retention rates for the other cohort groupings have also risen: Year 7 to Year 12 rose by 1.6 percentage points, from 74.3 per cent in 2013 to 75.9 per cent in 2014; and the apparent retention rate of Year 10 to Year 12 rose by 1.8 percentage points over the past year to 74.4 per cent.

Table 5

Apparent retention in NSW government schools, 2004-2014

Year	Years 7-10			Years 7-11			Years 7-12			Years 10-11			Years 10-12		
	Boys	Girls	Total	Boys	Girls	Total	Boys	Girls	Total	Boys	Girls	Total	Boys	Girls	Total
2004	94.7	96.0	95.4	74.3	83.7	78.9	61.9	73.4	67.5	77.5	87.0	82.2	64.9	76.1	70.4
2005	94.8	95.4	95.1	72.5	83.2	77.7	61.5	73.0	67.2	76.5	86.6	81.4	64.2	75.9	69.9
2006	95.2	95.8	95.5	73.1	83.1	78.0	60.5	72.5	66.4	77.1	87.1	82.0	63.9	75.5	69.6
2007	96.0	96.6	96.3	73.9	83.8	78.7	60.0	71.5	65.7	77.6	87.5	82.4	63.3	75.0	69.1
2008	96.6	96.6	96.6	73.9	84.0	78.8	60.3	72.0	66.0	77.0	86.9	81.9	63.3	75.2	69.1
2009	95.6	97.4	96.5	77.3	85.1	81.1	61.5	73.9	67.6	80.0	88.1	84.0	64.1	76.5	70.2
2010	99.4	100.2	99.8	81.1	89.7	85.3	64.9	74.8	69.7	84.8	92.2	88.4	67.1	77.4	72.2
2011	102.2	102.4	102.3	83.3	91.3	87.2	66.1	77.6	71.7	83.7	91.1	87.3	69.1	79.7	74.3
2012	101.4	102.8	102.1	86.1	93.3	89.6	66.9	77.4	72.0	84.3	91.0	87.6	67.3	77.3	72.2
2013	102.0	102.1	102.0	88.1	94.6	91.3	69.0	79.7	74.3	86.9	92.0	89.4	67.6	77.8	72.6
2014	103.0	103.2	103.1	89.3	94.9	92.1	70.9	81.2	75.9	87.6	92.9	90.2	69.9	79.0	74.4

Notes:

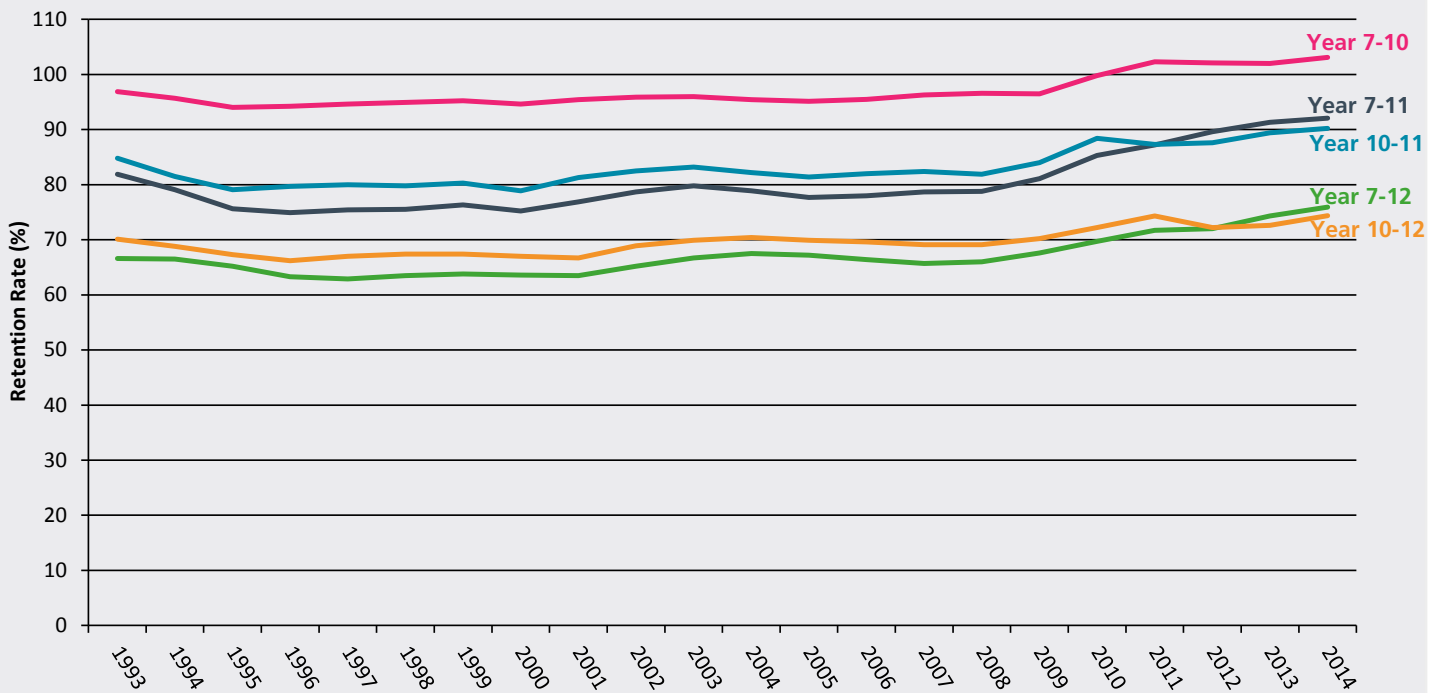
- All enrolments are reported in full-time equivalent units (FTEs), and include full-time and part-time students. Students enrolled in distance education classes are included with their appropriate grade levels.
- See explanatory note 2

In 2014 the apparent retention rate from Year 7 to Year 11 continued its upward trend, increasing by 0.8 percentage points from 91.3 per cent in 2013 to 92.1 per cent in 2014.

As seen in Figure 5, 2014 had the highest retention rates since 1993 across all cohort groupings. For instance, the apparent retention rate for Year 10 to Year 12 is 74.4 per cent, which is 0.1 percentage points higher than the previously highest rate in 2011.

Across the two gender groups, the apparent retention rates show a significant difference in Year 7 to Year 12 and Year 10 to Year 12. Girls are significantly more likely to remain at school until Year 12 than boys, with apparent retention rates for girls 9.1 percentage points higher than that of boys for Year 10 to Year 12 in 2014. However, this gender gap has narrowed compared to previous years, as the retention of girls was at least 10 percentage points greater than retention of boys in each year from 2004 to 2013.

Figure 5
Apparent retention in NSW government schools, 1993-2014



Government preschool

In NSW, most children receiving a preschool education are enrolled at a government funded community preschool or in a Long Day Care centre. The NSW government operates 100 preschools, providing a preschool education to over 4,000 children.

Table 6 shows that the number of children enrolled in government preschools decreased from 4,433 in 2013 to 4,365 in 2014. FTE enrolments also decreased, from 2,371.1 in 2013 to 2,356.8 in 2014.

Aboriginal preschool enrolments accounted for 13.7 per cent of FTE enrolments in 2014, which was similar to the result in 2013. Aboriginal preschool enrolments fell by 22 students or 4 per cent, from 555 in 2013 to 533 in 2014.

Early intervention preschool children

Children enrolled in an early intervention class at a NSW government school were included in the government school census for the first time in 2012. Early intervention classes provide early childhood education in a preschool setting for children with a disability.

Enrolments in early intervention classes increased by 36 students, from 684 in 2013 to 720 in 2014.

Table 6

Students in NSW government operated preschools, head count and full-time equivalent (FTE), 2005-2014

Year	All Students		Aboriginal and Torres Strait Islander Students		
	Students	FTE	Students	FTE	% of Total FTE
2005	4,307	2,481.6	434	275.4	11.1%
2006	4,273	2,444.7	422	275.2	11.3%
2007	4,239	2,422.6	404	262.3	10.8%
2008	4,285	2,516.9	409	269.5	10.7%
2009	4,291	2,455.5	491	317.7	12.9%
2010	4,325	2,498.6	493	315.1	12.6%
2011	4,416	2,484.9	507	328.7	13.2%
2012	4,424	2,460.7	599	379.9	15.4%
2013	4,433	2,371.1	555	327.0	13.8%
2014	4,365	2,356.8	533	321.9	13.7%

Table 7

Students in NSW government early intervention programs, head count and full-time equivalent (FTE), 2012-2014

Year	All Students		Aboriginal and Torres Strait Islander Students		
	Students	FTE	Students	FTE	% of Total FTE
2012	743	151.9	68	13.0	8.6%
2013	684	147.7	76	14.8	10.0%
2014	720	168.1	91	16.7	9.9%

Explanatory Notes

1. Mid-year census

The Census is used for state and federal planning and accountability, including reporting requirements under the NSW Education Act 1990 and the National Education Agreement 2012. Data contribute to the National School Statistics Collection (NSSC) which is collated by the Australian Bureau of Statistics (ABS) from state and territory student, school and staffing data. Preschool data contribute to the ABS Early Childhood Education and Care (ECEC) collection.

2. Apparent retention rates

Retention rates are 'apparent' as they do not track individual students through their final years of secondary schooling. What they measure is the ratio of the total number of full-time school students in a designated year (e.g. Year 12 in 2014) divided by the total number of full-time students in a previous year (e.g. Year 7 in 2009). This would be the Year 7 to 12 apparent retention rate in 2014.

Care should be taken in the interpretation of apparent retention rates, which can exceed 100%, because the method of calculation does not take into account a range of factors such as migration, interstate movements of students, transfers to and from non-government schools, part-time schooling, students repeating a year of schooling, or students pursuing other education and training pathways.

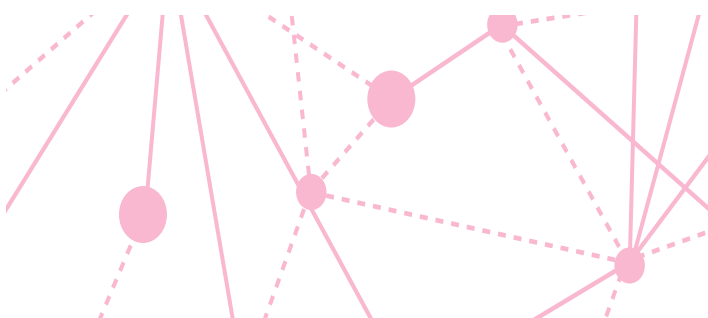
Further Information:

Each year the Australian Bureau of Statistics releases full publications and datacubes of government and non-government school enrolments for all states and territories.

www.abs.gov.au


ABS publication details:

- 4221.0 - Schools Australia, 2014
- 4240.0 - Preschool Education Australia, 2014



Contact Details

For more information about the Centre for Education Statistics and Evaluation, please contact us:

 02 9561 1211

 cese@det.nsw.edu.au

 www.cese.nsw.gov.au