

# Schools: Language Diversity in NSW, 2015

Centre for Education Statistics and Evaluation

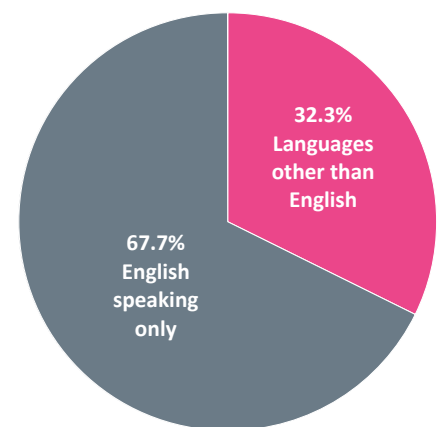
This bulletin summarises the diversity of students with a language background other than English (LBOTE) who are enrolled in NSW government schools in 2015.

## Introduction

In 2015, 67.7 per cent of students who are currently enrolled in NSW government schools come from homes where English is the only language (see Figure 1). The 2015 collection of language background data shows that about one third (32.3 per cent) of students in NSW government schools come from homes where languages other than English are spoken. The proportion of LBOTE (see definition on page 11) students rose by 0.7 percentage points from 2014 and 1.4 percentage point from 2013.

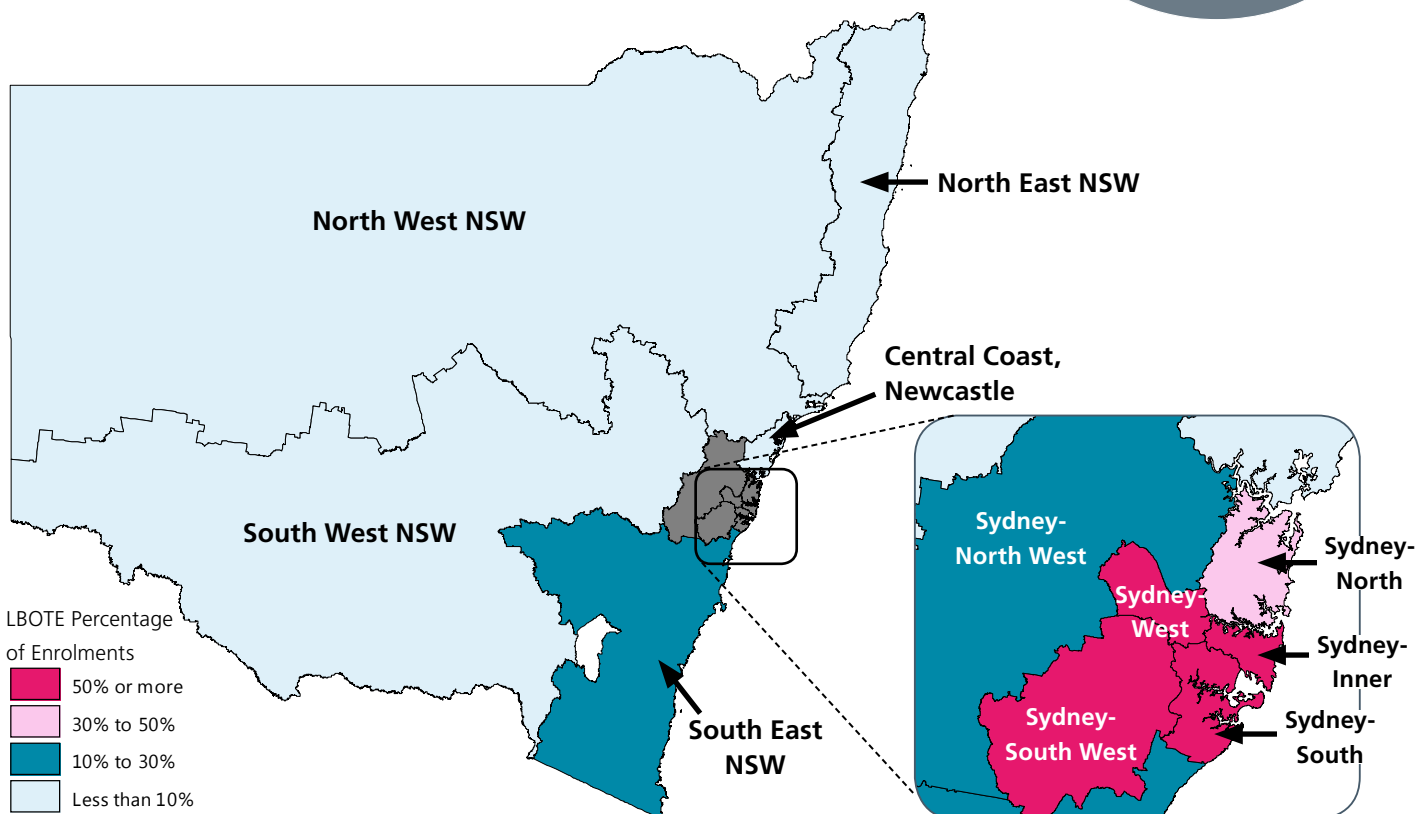
Figure 1

Language background of students in NSW government schools in 2015



Map 1

LBOTE Percentage of enrolments in a Statistical Area (SA4) grouping, March 2015



## Where are LBOTE students in NSW?

Previous publications of the LBOTE bulletin compared enrolments in DEC regions. From 2014 these geographies have been discontinued and replaced with a geographical structure based on the ABS Australian Statistical Geography Standard (ASGS). A combination of ASGS Statistical Area 4 (SA4) boundaries in New South Wales have been combined into 11 groups for reporting and publication of Department data.

As Map 1 illustrates, over 57 per cent of all primary and secondary students enrolled in NSW government schools are in the Sydney metropolitan area. In these schools over 50 per cent of the students have a language background other than English.

Sydney-West has the highest LBOTE student enrolment of 51,390 representing 64.1 per cent of all students enrolled. North West NSW has the lowest LBOTE student enrolment of 2,766 representing 4.1 per cent of all students enrolled.

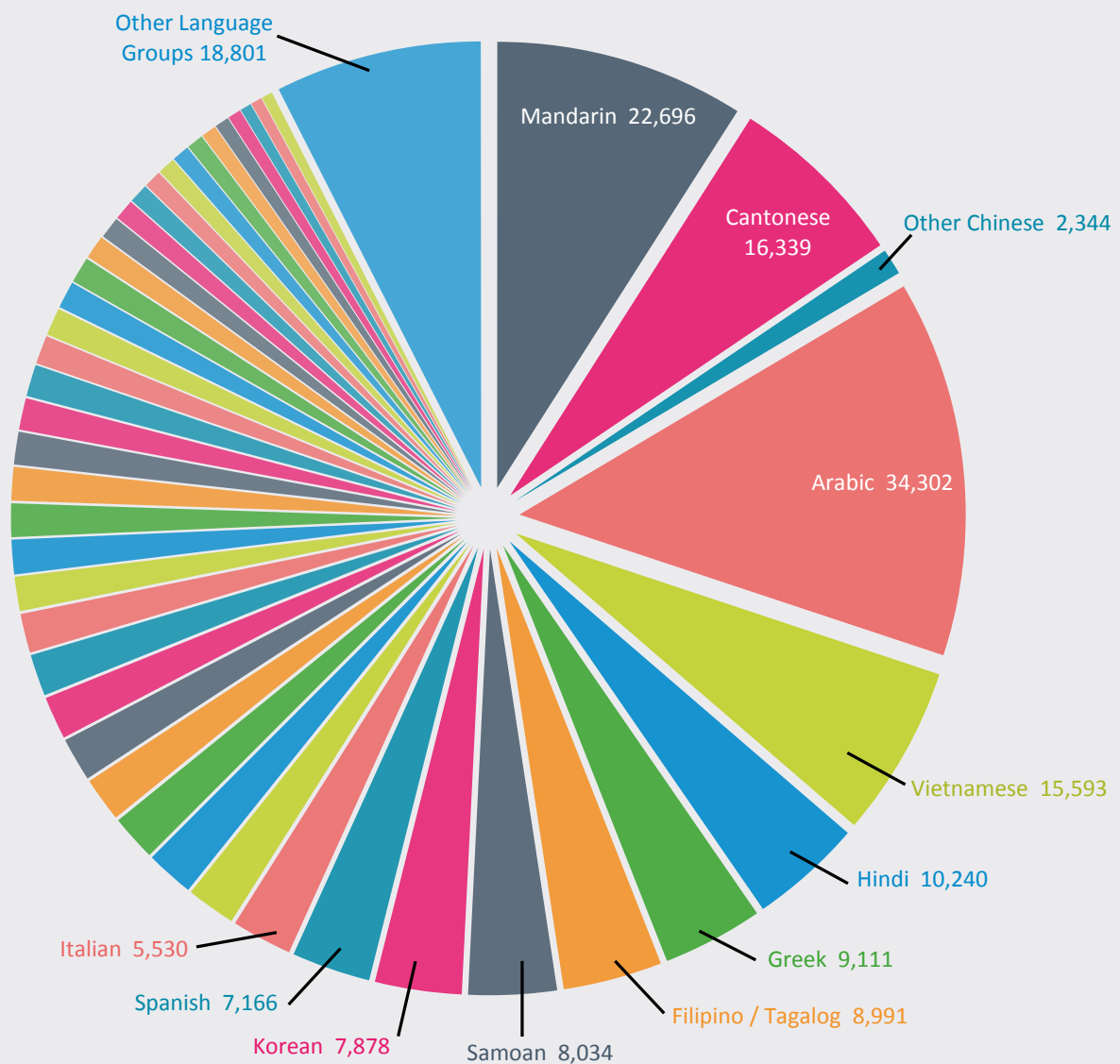
## Top ten language backgrounds of LBOTE students in NSW government schools

In 2015 the top ten languages represent more than 50 per cent of all LBOTE students.

The largest single language group of LBOTE students in 2015 is Arabic (34,302 students) and the largest combined language group is Chinese which comprises Mandarin, Cantonese and Other Chinese language backgrounds (41,379), see Figure 2.

**Figure 2**

**Language background diversity in NSW government schools, 2015**



## What are the language backgrounds of our students?

There are 231 different language backgrounds of LBOTE students at NSW government schools but only 43 languages have more than 1,000 LBOTE students enrolled. 188 languages are included in the 'Other Language Groups'.

After Chinese and Arabic the next largest language background is Vietnamese, followed by Hindi and Greek. Two language backgrounds from the Pacific Islands region, Filipino/Tagalog and Samoan also feature in the top ten language backgrounds.

In 2015, Marathi and Polish newly became large language groups with speakers increasing to more than 1,000 students.

In March 2015, there were 251,336 NSW government primary and secondary students identified as having a language background other than English, which comprises 32.3 per cent of the 778,508 NSW government school students overall.

**Table 1A**

**Enrolments of students of language background other than English by language - 2014 and 2015 (by largest language groups in 2015).**

Language	2014		2015	
	Students	% of Total LBOTE	Students	% of Total LBOTE
Chinese:	40,529	16.7%	41,379	16.5%
<i>Mandarin</i>	21,360	8.8%	22,696	9.0%
<i>Cantonese</i>	16,977	7.0%	16,339	6.5%
<i>Other Chinese</i>	2,192	0.9%	2,344	0.9%
Arabic	32,628	13.4%	34,302	13.6%
Vietnamese	15,543	6.4%	15,593	6.2%
Hindi	9,783	4.0%	10,240	4.1%
Greek	9,275	3.8%	9,111	3.6%
Filipino/Tagalog	8,641	3.6%	8,991	3.6%
Samoan	7,915	3.3%	8,034	3.2%
Korean	7,685	3.2%	7,878	3.1%
Spanish	6,916	2.8%	7,166	2.9%
Italian	5,697	2.3%	5,530	2.2%
Urdu	3,968	1.6%	4,467	1.8%
Tamil	4,163	1.7%	4,366	1.7%
Tongan	4,063	1.7%	4,207	1.7%
Indonesian	3,903	1.6%	4,055	1.6%
Bengali	3,631	1.5%	3,950	1.6%
Macedonian	3,993	1.6%	3,913	1.6%
Turkish	3,803	1.6%	3,761	1.5%
Punjabi	3,293	1.4%	3,579	1.4%
Assyrian & Chaldean	2,960	1.2%	3,139	1.2%
Japanese	3,042	1.3%	3,118	1.2%
Serbian	3,127	1.3%	3,074	1.2%
German	3,069	1.3%	3,046	1.2%
Thai	2,775	1.1%	2,968	1.2%
French	2,805	1.2%	2,880	1.1%
Persian (Excluding Dari)	2,731	1.1%	2,862	1.1%
Gujarati	2,180	0.9%	2,570	1.0%
Dari	2,480	1.0%	2,529	1.0%
Khmer	2,384	1.0%	2,427	1.0%
Russian	2,222	0.9%	2,396	1.0%
Maori (New Zealand)	2,153	0.9%	2,149	0.9%
Nepali	1,735	0.7%	1,971	0.8%
Portuguese	1,774	0.7%	1,876	0.7%
Sinhalese	1,751	0.7%	1,773	0.7%
Malayalam	1,389	0.6%	1,604	0.6%
Croatian	1,629	0.7%	1,598	0.6%
Telugu	1,340	0.6%	1,587	0.6%
Fijian	1,495	0.6%	1,519	0.6%
Dutch	1,364	0.6%	1,366	0.5%
Afrikaans	1,236	0.5%	1,299	0.5%
Maori (Cook Island)	1,167	0.5%	1,205	0.5%
Lao	1,027	0.4%	1,024	0.4%
Marathi	911	0.4%	1,023	0.4%
Polish	971	0.4%	1,010	0.4%
Other Language Groups	17,704	7.3%	18,801	7.5%
<b>Total</b>	<b>242,850</b>	<b>100%</b>	<b>251,336</b>	<b>100%</b>

**Notes:**

1. The table is ordered by the largest language groups for language groups with 1,000 or more students in 2015. Language groups with fewer than 1,000 students in 2015 are included in 'Other Language Groups'.
2. See the definition of LBOTE on page 11 for the reporting rule used to determine the language background for students from households where multiple languages are spoken.
3. See page 11 for other explanatory notes.

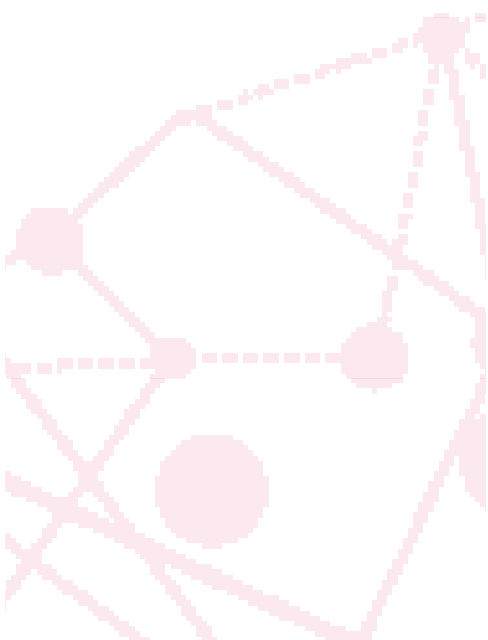


Table 1B

Enrolments of students of language background other than English by language and level of schooling,  
March 2015 (by largest language groups)

Language	Primary		Secondary		All LBOTE Students		
	Students	% of Primary LBOTE	Students	% of Primary LBOTE	Students	% of Total LBOTE	Cumulative
Chinese:	21,072	14.3%	20,181	19.7%	41,379	16.5%	16.5%
<i>Mandarin</i>	12,148	8.2%	10,496	10.2%	22,696	9.0%	<i>n/a</i>
<i>Cantonese</i>	7,600	5.2%	8,680	8.5%	16,339	6.5%	<i>n/a</i>
<i>Other Chinese</i>	1,324	0.9%	1,005	1.0%	2,344	0.9%	<i>n/a</i>
Arabic	20,614	14.0%	13,329	13.0%	34,302	13.6%	30.1%
Vietnamese	8,044	5.5%	7,425	7.2%	15,593	6.2%	36.3%
Hindi	6,558	4.5%	3,629	3.5%	10,240	4.1%	40.4%
Greek	5,789	3.9%	3,271	3.2%	9,111	3.6%	44.0%
Filipino/Tagalog	4,682	3.2%	4,232	4.1%	8,991	3.6%	47.6%
Samoaan	4,482	3.0%	3,510	3.4%	8,034	3.2%	50.8%
Korean	4,525	3.1%	3,335	3.3%	7,878	3.1%	53.9%
Spanish	4,531	3.1%	2,593	2.5%	7,166	2.9%	56.8%
Italian	3,349	2.3%	2,143	2.1%	5,530	2.2%	59.0%
Urdu	2,944	2.0%	1,494	1.5%	4,467	1.8%	60.8%
Tamil	2,698	1.8%	1,652	1.6%	4,366	1.7%	62.5%
Tongan	2,401	1.6%	1,777	1.7%	4,207	1.7%	64.2%
Indonesian	2,409	1.6%	1,624	1.6%	4,055	1.6%	65.8%
Bengali	2,575	1.7%	1,332	1.3%	3,950	1.6%	67.3%
Macedonian	2,291	1.6%	1,606	1.6%	3,913	1.6%	68.9%
Turkish	2,084	1.4%	1,651	1.6%	3,761	1.5%	70.4%
Punjabi	2,463	1.7%	1,102	1.1%	3,579	1.4%	71.8%
Assyrian & Chaldean	1,843	1.3%	1,275	1.2%	3,139	1.2%	73.1%
Japanese	1,975	1.3%	1,131	1.1%	3,118	1.2%	74.3%
Serbian	1,561	1.1%	1,502	1.5%	3,074	1.2%	75.5%
German	1,884	1.3%	1,157	1.1%	3,046	1.2%	76.7%
Thai	1,787	1.2%	1,167	1.1%	2,968	1.2%	77.9%
French	1,903	1.3%	968	0.9%	2,880	1.1%	79.1%
Persian (Excluding Dari)	1,548	1.1%	1,297	1.3%	2,862	1.1%	80.2%
Gujarati	1,935	1.3%	635	0.6%	2,570	1.0%	81.2%
Dari	1,457	1.0%	1,063	1.0%	2,529	1.0%	82.2%
Khmer	1,394	0.9%	1,022	1.0%	2,427	1.0%	83.2%
Russian	1,618	1.1%	772	0.8%	2,396	1.0%	84.2%
Maori (New Zealand)	1,191	0.8%	949	0.9%	2,149	0.9%	85.0%
Nepali	1,354	0.9%	614	0.6%	1,971	0.8%	85.8%
Portuguese	1,232	0.8%	631	0.6%	1,876	0.7%	86.5%
Sinhalese	1,062	0.7%	700	0.7%	1,773	0.7%	87.3%
Malayalam	1,151	0.8%	450	0.4%	1,604	0.6%	87.9%
Croatian	931	0.6%	653	0.6%	1,598	0.6%	88.5%
Telugu	1,235	0.8%	352	0.3%	1,587	0.6%	89.2%
Fijian	859	0.6%	651	0.6%	1,519	0.6%	89.8%
Dutch	877	0.6%	485	0.5%	1,366	0.5%	90.3%
Afrikaans	757	0.5%	539	0.5%	1,299	0.5%	90.8%
Maori (Cook Island)	643	0.4%	555	0.5%	1,205	0.5%	91.3%
Lao	559	0.4%	461	0.4%	1,024	0.4%	91.7%
Marathi	686	0.5%	331	0.3%	1,023	0.4%	92.1%
Polish	665	0.5%	343	0.3%	1,010	0.4%	92.5%
Other Language Groups	11,706	7.9%	6,978	6.8%	18,820	7.5%	100.0%
<b>Total</b>	<b>147,324</b>	<b>100%</b>	<b>102,567</b>	<b>100%</b>	<b>251,336</b>	<b>100.0%</b>	

## Notes:

1. All LBOTE students includes SSP students, which are not included in primary or secondary student numbers.
2. See page 11 for other explanatory notes.

## Trends for the largest language groups over the period 2000 to 2015

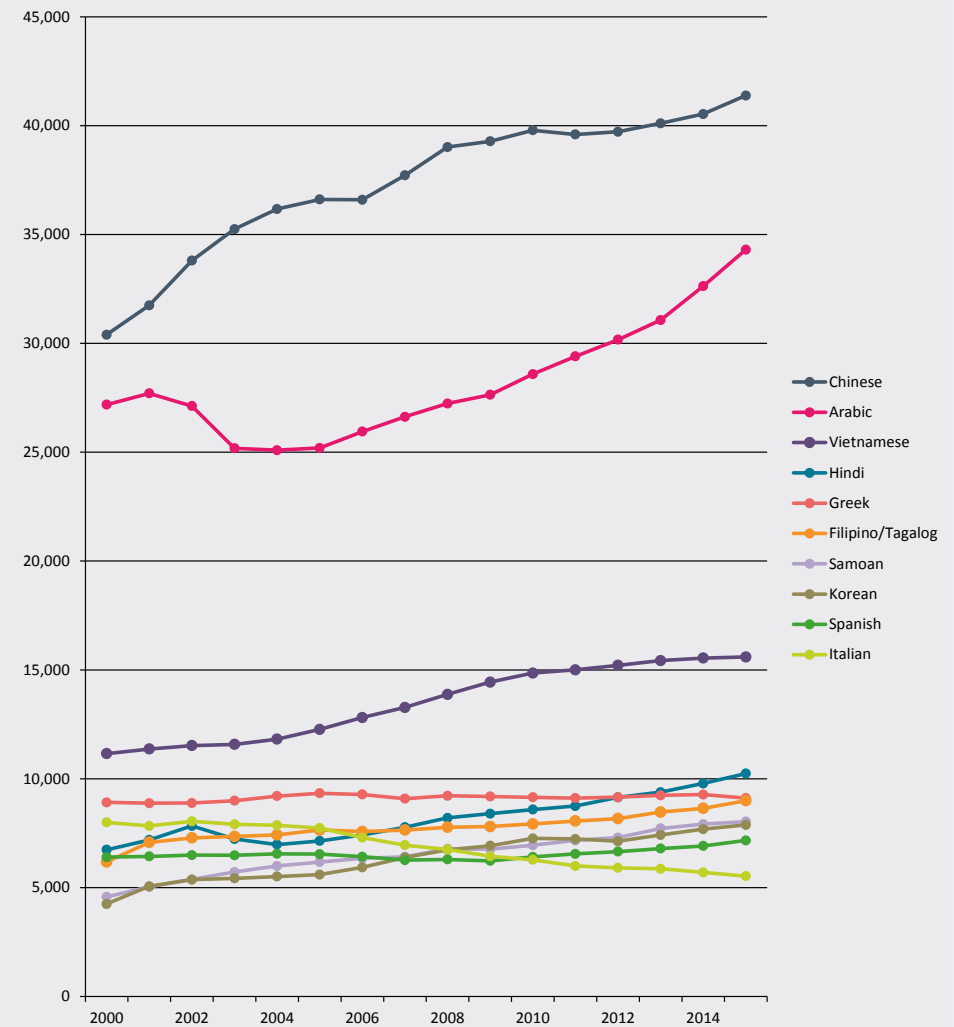
Since 2000, the top three language groups have grown significantly (see Figure 3), with Chinese growing 36.1 per cent, while Arabic and Vietnamese have grown 26.2 per cent and 39.8 per cent respectively over that period. Korean has had the largest percentage growth over the period of 85.4 per cent.

There has been a decline of 30.8 per cent in Italian language background students over the period 2000-2015 from 7,993 in 2000 to 5,530 in 2015. Italian has slipped from the fifth largest language background in 2000, to the tenth largest language background in 2015.

Since 2010, out of the top three language groups, Arabic has increased at a faster rate than Chinese and Vietnamese. Arabic has increased each year between three and five percent, whilst Chinese and Vietnamese have increased at one and two percent each year (see Figure 3).

Figure 3

Top ten language background other than English, 2000-2015



## Location of LBOTE students from different language backgrounds

Nearly 60 per cent of all LBOTE students are located in Sydney-West, Sydney-South or Sydney-South West. However, there are significant pockets of students from various language backgrounds located in other areas as shown in Table 2. For example, students from Chinese, Korean, Japanese, German and French language backgrounds are more likely to be located in Sydney-North, whereas students from Italian and Russian language backgrounds are more likely to be located in Sydney-Inner.

The language backgrounds concentrated in Sydney-West include Arabic, Chinese, Hindi and Filipino/Tagalog with between one-third and one-half of all students from these language backgrounds located in this area alone.

Sydney-South West contains almost all students from Assyrian & Chaldean (88.7%) and Khmer (84.6%) language backgrounds, plus the largest concentrations of students of Vietnamese (54.9%), Serbian (49.6%) and Samoan (47%) language backgrounds.

Sydney-South contains the largest proportions of students from Greek (47.4%) and Macedonian (41.2%) language backgrounds, as well as Arabic language background students (38.5%).

The only language background with a significant concentration of students outside the Sydney metropolitan area is Macedonian with 27.5 per cent of students located in South East NSW.

Table 2

## LBOTE enrolments by language and Statistical Area 4 Groupings and number of language groups - March 2015

Language	Sydney-North	Sydney-Inner	Sydney-South	Sydney-South West	Sydney-West	Sydney-North West	North East NSW	North West NSW	South West NSW	South East NSW	Central Coast, Newcastle	Total State LBOTE	As % of Total LBOTE
Chinese:	11,399	7,461	7,703	3,973	6,303	3,075	129	127	156	415	638	41,379	16.5%
<i>Mandarin</i>	7,139	4,340	3,947	1,086	3,482	1,944	53	52	65	236	352	22,696	9.0%
<i>Cantonese</i>	3,957	2,839	3,539	1,894	2,537	1,028	58	62	68	122	235	16,339	6.5%
<i>Other Chinese</i>	303	282	217	993	284	103	18	13	23	57	51	2,344	0.9%
Arabic	671	1,607	13,205	7,890	8,759	851	51	116	117	779	256	34,302	13.6%
Vietnamese	512	1,688	2,721	8,556	1,382	236	60	58	33	202	145	15,593	6.2%
Hindi	1,166	640	719	2,452	3,641	1,162	41	68	76	111	164	10,240	4.1%
Greek	591	1,715	4,319	791	486	423	60	39	65	368	254	9,111	3.6%
Filipino/Tagalog	849	702	907	1,132	2,716	962	244	356	264	406	453	8,991	3.6%
Samoaan	83	128	797	3,775	2,141	515	37	62	199	100	197	8,034	3.2%
Korean	3,014	1,663	444	57	1,536	848	17	11	13	73	202	7,878	3.1%
Spanish	947	997	850	1,931	653	600	219	85	82	432	370	7,166	2.9%
Italian	766	1,224	644	1,044	342	426	101	65	230	386	302	5,530	2.2%
Urdu	233	328	1,012	634	1,524	495	11	41	58	65	66	4,467	1.8%
Tamil	452	638	132	253	2,108	634	13	40	17	17	62	4,366	1.7%
Tongan	256	361	570	1,016	1,305	218	18	41	131	117	174	4,207	1.7%
Indonesian	588	897	989	351	488	261	99	33	24	142	183	4,055	1.6%
Bengali	203	637	1,155	791	749	223	8	37	39	39	69	3,950	1.6%
Macedonian	82	113	1,612	596	80	45	10	8	12	1,075	280	3,913	1.6%
Turkish	143	583	377	480	1,604	266	21	17	39	194	37	3,761	1.5%
Punjabi	245	131	203	281	1,694	486	241	43	161	61	33	3,579	1.4%
Assyrian & Chaldean	13	103	78	2,784	86	60	3	4	0	3	5	3,139	1.2%
Japanese	1,329	560	337	86	159	140	177	45	26	109	150	3,118	1.2%
Serbian	285	217	272	1,526	195	138	6	12	23	321	79	3,074	1.2%
German	838	500	204	105	78	243	302	94	84	312	286	3,046	1.2%
Thai	477	549	401	390	263	132	179	76	84	221	196	2,968	1.2%
French	995	537	254	126	195	138	197	63	43	156	176	2,880	1.1%
Persian Excluding Dari/Farsi	710	155	125	220	1,046	421	21	11	31	90	32	2,862	1.1%
Gujarati	195	137	119	80	1,701	210	7	19	43	28	31	2,570	1.0%
Dari	114	87	95	158	1,768	151	62	6	25	19	44	2,529	1.0%
Khmer	35	45	63	2,054	102	48	8	3	12	19	38	2,427	1.0%
Russian	490	722	348	139	228	179	34	38	47	64	107	2,396	1.0%
Maori (New Zealand)	82	134	432	342	430	161	95	91	108	152	122	2,149	0.9%
Nepali	200	291	519	150	470	98	4	40	140	28	31	1,971	0.8%
Portuguese	394	369	336	216	139	70	67	37	15	162	71	1,876	0.7%
Sinhalese	333	85	65	113	459	537	12	37	41	44	47	1,773	0.7%
Malayalam	195	158	144	245	489	236	10	16	16	52	43	1,604	0.6%
Croatian	190	128	227	367	194	196	18	16	21	164	77	1,598	0.6%
Telugu	203	224	58	105	776	162	1	11	7	12	28	1,587	0.6%
Fijian	59	127	290	308	346	60	30	36	146	42	75	1,519	0.6%
Dutch	463	175	100	25	47	135	86	54	45	122	114	1,366	0.5%
Afrikaans	321	41	79	88	69	249	42	116	110	76	108	1,299	0.5%
Maori (Cook Island)	23	95	283	201	345	40	8	17	79	98	16	1,205	0.5%
Lao	26	18	44	818	35	12	10	10	27	15	9	1,024	0.4%
Marathi	165	61	66	270	319	109	5	5	6	4	13	1,023	0.4%
Polish	197	126	112	128	118	120	28	20	7	69	85	1,010	0.4%
Other Language Groups	2,441	2,168	2,143	2,673	3,822	1,598	804	642	505	1,042	963	18,801	7.5%
<b>Total LBOTE</b>	<b>32,973</b>	<b>29,325</b>	<b>45,553</b>	<b>49,720</b>	<b>51,390</b>	<b>17,369</b>	<b>3,596</b>	<b>2,766</b>	<b>3,407</b>	<b>8,406</b>	<b>6,831</b>	<b>251,336</b>	<b>100%</b>
<b>No. of different language groups</b>	<b>149</b>	<b>168</b>	<b>172</b>	<b>169</b>	<b>177</b>	<b>158</b>	<b>107</b>	<b>121</b>	<b>125</b>	<b>153</b>	<b>141</b>	<b>232</b>	

## Notes:

- The table is ordered by the largest language groups for languages with 1,000 or more students in 2015.
- See page 11 for other explanatory notes.

## Location of LBOTE students by level of schooling

For schools in Sydney-North and Sydney-Inner the proportion of LBOTE students as a percentage of enrolments is more than 10 percentage points higher for secondary schools than for primary schools (see Table 3A). Contributing factors are

likely to include: full fee paying international students who are predominantly Year 10-12 students enrolling in schools in these two areas; a relatively large number of selective schools (which have very high LBOTE enrolments) in these two areas drawing some of their students from other areas; and the slightly higher rate of retention of LBOTE students to Year 12 relative to English speaking students.

**Table 3A**

**Enrolments of students of language background other than English, by Statistical Area 4 groupings and level of schooling, March 2015**

SA4 Groupings	Primary			Secondary			SSP			All Students		
	LBOTE students	All students	LBOTE as % of enrolls	LBOTE students	All students	LBOTE as % of enrolls	LBOTE students	All students	LBOTE as % of enrolls	LBOTE students	All students	LBOTE as % of enrolls
Sydney-North	19,429	54,362	35.7%	13,411	28,195	47.6%	133	383	34.7%	32,973	82,940	39.8%
Sydney-Inner	15,539	33,894	45.8%	13,667	20,594	66.4%	119	214	55.6%	29,325	54,702	53.6%
Sydney-South	27,089	45,787	59.2%	18,094	30,171	60.0%	370	673	55.0%	45,553	76,631	59.4%
Sydney-South West	27,902	48,508	57.5%	21,584	35,167	61.4%	234	563	41.6%	49,720	84,238	59.0%
Sydney-West	33,173	51,289	64.7%	17,823	28,071	63.5%	394	762	51.7%	51,390	80,122	64.1%
Sydney-North West	9,344	36,899	25.3%	7,959	25,121	31.7%	66	246	26.8%	17,369	62,266	27.9%
North East NSW	2,125	36,122	5.9%	1,468	27,883	5.3%	3	109	2.8%	3,596	64,114	5.6%
North West NSW	1,736	39,780	4.4%	1,022	27,577	3.7%	8	166	4.8%	2,766	67,523	4.1%
South West NSW	2,103	31,388	6.7%	1,286	22,569	5.7%	18	439	4.1%	3,407	54,396	6.3%
South East NSW	4,972	42,328	11.7%	3,396	29,172	11.6%	38	367	10.4%	8,406	71,867	11.7%
Central Coast, Newcastle	3,912	44,827	8.7%	2,857	34,344	8.3%	62	538	11.5%	6,831	79,709	8.6%
<b>Total</b>	<b>147,324</b>	<b>465,184</b>	<b>31.7%</b>	<b>102,567</b>	<b>308,864</b>	<b>33.2%</b>	<b>1,445</b>	<b>4,460</b>	<b>32.4%</b>	<b>251,336</b>	<b>778,508</b>	<b>32.3%</b>

**Notes:**

1. LBOTE enrolments for 2015 are compared to enrolments (headcount) in March 2015.
2. Previous publications of the LBOTE bulletin have compared DEC regions. From 2015 these geographies have been discontinued and replaced with a new geographical structure by the ABS. See page 11 for further information.



## LBOTE students Kindergarten to Year 12

As a percentage of enrolments in any particular academic year, the percentage of LBOTE students in NSW government schools is steady from Kindergarten to Year 10 at approximately 30 per cent. This percentage is higher for the senior years with 33.9 per cent for Year 11 and 37.7 per cent for Year 12 students (see Table 3B). This is indicative of higher rates of retention to Year 12 of LBOTE students compared to English speaking students,

as well as the increased number of full fee paying international students in these years.

There is a higher proportion of LBOTE students enrolled in NSW government secondary schools than in primary schools. LBOTE student enrolments represented 31.7 per cent of all primary enrolments and 33.2 per cent of all secondary enrolments in NSW government schools.

**Table 3B**

**Enrolments of students of language background other than English, by Statistical Area (SA4) grouping and scholastic year, March 2015**

SA4 Groupings	Primary									SSP
	Kinder	Year 1	Year 2	Year 3	Year 4	Year 5	Year 6	Support	Total	
Sydney-North	3,282	3,034	3,085	2,651	2,550	2,459	2,297	71	19,429	133
Sydney-Inner	2,512	2,414	2,357	2,194	2,089	2,016	1,835	122	15,539	119
Sydney-South	4,109	3,963	3,989	3,807	3,670	3,613	3,638	300	27,089	370
Sydney-South West	3,839	3,946	3,998	4,139	3,793	3,806	3,859	522	27,902	234
Sydney-West	5,363	5,097	5,052	4,705	4,378	4,168	4,000	410	33,173	394
Sydney-North West	1,402	1,352	1,398	1,319	1,294	1,238	1,246	95	9,344	66
North East NSW	340	307	307	323	282	271	276	19	2,125	3
North West NSW	280	239	261	249	235	243	216	13	1,736	8
South West NSW	325	326	289	325	273	261	285	19	2,103	18
South East NSW	770	726	708	696	714	657	640	61	4,972	38
Central Coast, Newcastle	622	574	556	568	543	511	496	42	3,912	62
<b>State Total</b>	<b>22,844</b>	<b>21,978</b>	<b>22,000</b>	<b>20,976</b>	<b>19,821</b>	<b>19,243</b>	<b>18,788</b>	<b>1,674</b>	<b>147,324</b>	<b>1,445</b>
<b>As % of All Enrolments</b>	<b>33.0%</b>	<b>32.1%</b>	<b>31.7%</b>	<b>31.3%</b>	<b>30.9%</b>	<b>31.7%</b>	<b>31.4%</b>	<b>27.0%</b>	<b>31.7%</b>	<b>32.4%</b>

SA4 Groupings	Secondary								Primary and Secondary		
	Year 7	Year 8	Year 9	Year 10	Year 11	Year 12	Support	Total	LBOTE Enrols	All Enrols	As % SA4 Grouping
Sydney-North	2,028	2,016	2,047	2,189	2,420	2,264	447	13,411	32,973	82,940	39.8%
Sydney-Inner	1,944	1,962	2,147	2,314	2,441	2,346	513	13,667	29,325	54,702	53.6%
Sydney-South	2,762	2,707	2,919	3,127	3,073	2,723	783	18,094	45,553	76,631	59.4%
Sydney-South West	3,459	3,275	3,483	3,595	3,554	3,263	955	21,584	49,720	84,238	59.0%
Sydney-West	2,766	2,699	2,841	2,910	3,105	2,714	788	17,823	51,390	80,122	64.1%
Sydney-North West	1,189	1,160	1,230	1,324	1,492	1,421	143	7,959	17,369	62,266	27.9%
North East NSW	217	244	251	264	271	202	19	1,468	3,596	64,114	5.6%
North West NSW	200	186	170	148	167	131	20	1,022	2,766	67,523	4.1%
South West NSW	216	202	208	216	247	180	17	1,286	3,407	54,396	6.3%
South East NSW	490	554	533	530	593	503	193	3,396	8,406	71,867	11.7%
Central Coast, Newcastle	450	492	499	496	468	397	55	2,857	6,831	79,709	8.6%
<b>State Total</b>	<b>15,721</b>	<b>15,497</b>	<b>16,328</b>	<b>17,113</b>	<b>17,831</b>	<b>16,144</b>	<b>3,933</b>	<b>102,567</b>	<b>251,336</b>	<b>778,508</b>	
<b>As % of All Enrolments</b>	<b>31.7%</b>	<b>31.1%</b>	<b>31.9%</b>	<b>32.4%</b>	<b>33.9%</b>	<b>37.7%</b>	<b>39.4%</b>	<b>33.2%</b>	<b>32.3%</b>		

**Notes:**

1. All LBOTE students includes SSP students, which are not included in primary or secondary student numbers.
2. See page 11 for other explanatory notes.



## What languages do newly arrived students speak?

Languages spoken by 'new arrival' students are counted on a different basis than LBOTE. The students in this table are counted based on the main languages spoken by the students

themselves, while the LBOTE count includes students who speak another language and those with a parent/carer who speaks another language. The total number of new arrival students in 2014 was 7,958. This is a slight increase from last year's total of 7,274.

**Table 4**

### Main languages spoken by new arrival students 2010 to 2014

2010		2011		2012		2013		2014	
Language	Total	Language	Total	Language	Total	Language	Total	Language	Total
Mandarin	840	Mandarin	940	Mandarin	981	Arabic	1,054	Arabic	1,108
Arabic	643	Arabic	746	Arabic	574	Mandarin	810	Mandarin	1,019
Korean	478	Korean	352	Korean	371	Samoan	313	Hindi	309
Filipino/Tagalog	317	Filipino/Tagalog	334	Filipino/Tagalog	362	Korean	312	Samoan	308
Cantonese	293	Cantonese	296	Vietnamese	349	Filipino/Tagalog	307	Korean	304
Vietnamese	227	Vietnamese	251	Samoan	305	Persian excluding Dari/Farsi	282	Cantonese	302
Hindi	203	Samoan	235	Cantonese	279	Hindi	234	Urdu	295
Samoan	177	Hindi	208	Hindi	220	Cantonese	225	Vietnamese	265
Dari	168	Tamil	159	Urdu	192	Vietnamese	218	Filipino/Tagalog	363
Indonesian	152	Persian excluding Dari/Farsi	151	Persian excluding Dari/Farsi	165	Urdu	186	Dari	201
Nepalese	151	Spanish	142	Nepalese	149	Dari	183	Nepali	164
Urdu	147	Nepalese	140	Spanish	149	Tamil	171	Bengali	152
Spanish	142	Indonesian	140	Thai	133	Nepalese	171	Tamil	147
Thai	133	Urdu	132	Japanese	119	Chaldean Neo-Aramaic	165	Spanish	142
Tamil	122	Thai	116	Indonesian	118	Spanish	123	Persian excluding Dari/Farsi	142
Assyrian	109	Japanese	115	Tamil	97	Assyrian Neo-Aramaic	123	Assyrian Neo-Aramaic	133
Japanese	106	Dari	105	Greek	92	Hazaraghi	121	Thai	129
Bengali	98	Bengali	93	Bengali	91	Malayalam	117	Indonesian	122
Others	1,999	Others	1,919	Others	1,971	Others	2,159	Others	2,353
<b>Total</b>	<b>6,505</b>	<b>Total</b>	<b>6,574</b>	<b>Total</b>	<b>6,717</b>	<b>Total</b>	<b>7,274</b>	<b>Total</b>	<b>7,958</b>

#### Notes:

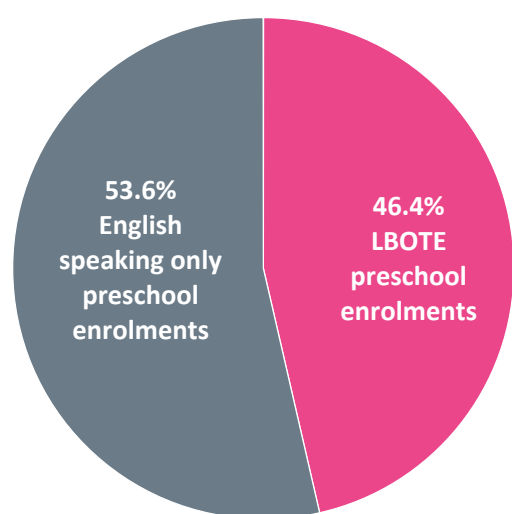
1. The New Arrivals Program (NAP) survey is conducted twice per year (March and October) and includes only new enrolments in the 6 months prior to the NAP survey. Before 2012, the NAP survey was conducted three times per year (also included June). 2015 NAP data is not available at the time this bulletin was prepared, since the October survey has not been completed.
2. New arrival students include only those who have enrolled in school in the 6 months prior to the NAP survey, speak a language other than English as their first language, are enrolling in an Australian school for the first time, are in need of initial ESL instruction, and have been in Australia less than 6 months (or for Kindergarten students less than 18 months).
3. The student count in this table is based on main languages spoken by the students themselves. This differs from LBOTE student counts which include languages spoken by the student and/or their parents or carers.
4. With the move in official reporting from Multicultural Education Unit to Statistics Unit in 2013, counting rules slightly differ from previously published data and has resulted in a time series break.

## What language backgrounds do preschool students come from?

Government preschools enrolled 1,864 students of language background other than English in 2015, representing 46.4 per cent (see Figure 4) of all government preschool enrolments.

Preschool LBOTE enrolments are reported in Table 5 by largest language groups. LBOTE enrolments less than 10 (approximately 0.5%) are included in 'Other Language Groups'.

**Figure 4**  
Language background of students in NSW government schools, March 2015



**Table 5**

### Enrolments of government preschool students of language background other than English – largest language groups – March 2015

Language	Students	As a % of LBOTE
Arabic	329	17.7%
Vietnamese	228	12.2%
Chinese	177	9.5%
<i>Cantonese</i>	54	2.9%
<i>Mandarin</i>	66	3.5%
<i>Other Chinese</i>	57	3.1%
Urdu	79	4.2%
Samoan	73	3.9%
Bengali	68	3.6%
Hindi	67	3.6%
Punjabi	62	3.3%
Khmer	56	3.0%
Filipino/Tagalog	50	2.7%
Korean	47	2.5%
Gujarati	39	2.1%
Tongan	37	2.0%
Tamil	36	1.9%
Indonesian	36	1.9%
Spanish	36	1.9%
Italian	26	1.4%
Malayalam	26	1.4%
Assyrian & Chaldean	24	1.3%
Turkish	21	1.1%
Dari	21	1.1%
Greek	21	1.1%
Nepali	19	1.0%
Aboriginal English	18	1.0%
Japanese	17	0.9%
Macedonian	14	0.8%
Fijian	13	0.7%
Thai	13	0.7%
Lao	10	0.5%
Others Language Groups	201	10.8%
<b>Total</b>	<b>1,864</b>	<b>100.0%</b>
<b>LBOTE as a % of preschool enrolment</b>	<b>46.4%</b>	

**Notes:**

1. Preschools include the 99 preschools attached to government primary/infant schools and the John Brothie Nursery School. Not included are the government funded community preschools and long day centres that provide a preschool program, which provide the majority of preschool education in NSW.
2. Students include children enrolled in a preschool or an Early Intervention program that is run by a NSW government school. These government preschool classes provide full-time or part-time schooling at pre-primary level.
3. LBOTE as a percentage of preschool enrolment uses March 2015 enrolment data.
4. Other language groups includes 65 language groups.

## Definitions

### 1. LBOTE

**Language background other than English:** students from language backgrounds other than English are those in whose home a language other than English is spoken by the student, parents, or other primary caregivers.

For students where multiple languages are spoken at home, priority is given first to the primary language spoken by the student and then to that spoken by those caregivers recorded on enrolment forms and in ERN as parent 1 and parent 2 in that order.

### 2. New arrivals

New arrival students include only those who have enrolled in school in the 6 months prior to the survey.

New arrival students:

- speak a language other than English as their first language
- are enrolling in an Australian school for the first time
- are in need of initial ESL instruction
- have been in Australia less than 6 months (or for Kindergarten students less than 18 months).

The student count of new arrivals is based on main languages spoken by the students themselves. This differs from LBOTE student count which includes languages spoken by the student and/or their parents or carers.

## Explanatory Notes

The census of students from language backgrounds other than English (LBOTE) was taken on 6 March 2015 in all NSW government schools, including preschools, intensive English centres and distance education centres.

Since 1996, information on LBOTE students has been collected in the first half of the school year. Until 2012 comparative enrolment information for all students was extracted from the School Entitlement System (February enrolment data). From 2013, comparative enrolment information for all students was extracted from the Enrolment Registration Number (ERN) system during March, at the time the LBOTE data was collected.

### 1. New arrivals data

Table 4 (main languages spoken by newly arriving students (2010 to 2014)) is a table sourced from the Statistics Unit analysis of data collected in two New Arrivals data collections undertaken each year. The table notes that the student count is based on languages spoken by the students themselves and is therefore different from other LBOTE student counts in the bulletin.

### 2. Australian Standard Classification of Languages (ASCL)

Several of the smaller language groupings have changed with the release of a revised Australian Standard Classification of Languages (1267.0) by the Australian Bureau of Statistics in August 2011. For information on languages, refer to Australian Standard Classification of Languages, Australian Bureau of Statistics (ASCL catalogue 1267.0).

### 3. Language groups reported

Tables are reported using the 'largest language groups'. The 'standard reporting groups' tables, which had been used up until 2010, have become out of date.

### 4. Combined language groups

The 'Other Chinese' language group includes Chinese nec (ASCL 7199), Hakka (ASCL 1027), Min Nan (ASCL 7107) and Wu (ASCL 7106).

Filipino (ASCL 6512) and Tagalog (ASCL 6511) have been combined into one language group.

The 'Assyrian & Chaldean' language group includes Assyrian Neo-Aramaic (ASCL 4206), Chaldean Neo-Aramaic (ASCL 4207) and Assyrian (ASCL 4203).

Other Language Groups are those languages with fewer than 1,000 students in 2014.

### 5. Statistical Area 4 Groupings

Previous publications of the LBOTE bulletin compared enrolments in DEC regions. From 2014 these geographies have been discontinued and replaced with a geographical structure based on the ABS Australian Statistical Geography Standard (ASGS). A combination of ASGS Statistical Area 4 (SA4) boundaries in New South Wales have been combined into 11 groups for reporting and publication of Department data.

Name of SA4 Groupings	SA4 Name
Sydney-North	Sydney - North Sydney and Hornsby, Sydney - Northern Beaches, Sydney - Ryde
Sydney-Inner	Sydney - City and Inner South, Sydney - Eastern Suburbs, Sydney - Inner West
Sydney-South	Sydney-Inner South West, Sydney - Sutherland
Sydney-South West	Sydney - Outer South West, Sydney - South West
Sydney-West	Sydney - Blacktown, Sydney - Parramatta
Sydney-North West	Sydney - Baulkham Hills and Hawkesbury, Sydney - Outer West and Blue Mountains
North East NSW	Coffs Harbour - Grafton, Mid North Coast, Richmond - Tweed
North West NSW	Hunter Valley exc Newcastle, Far West and Orana, New England and North West
South West NSW	Central West, Murray, Riverina
South East NSW	Capital Region, Illawarra, Southern Highlands and Shoalhaven
Central Coast, Newcastle	Central Coast, Newcastle and Lake Macquarie

## Contact Details

For more information about the Centre for Education Statistics and Evaluation, please contact us:

02 9561 1211

cese@det.nsw.edu.au

www.cese.nsw.gov.au