

Schools: InBrief Mid-Year Census 2016

Centre for Education Statistics and Evaluation

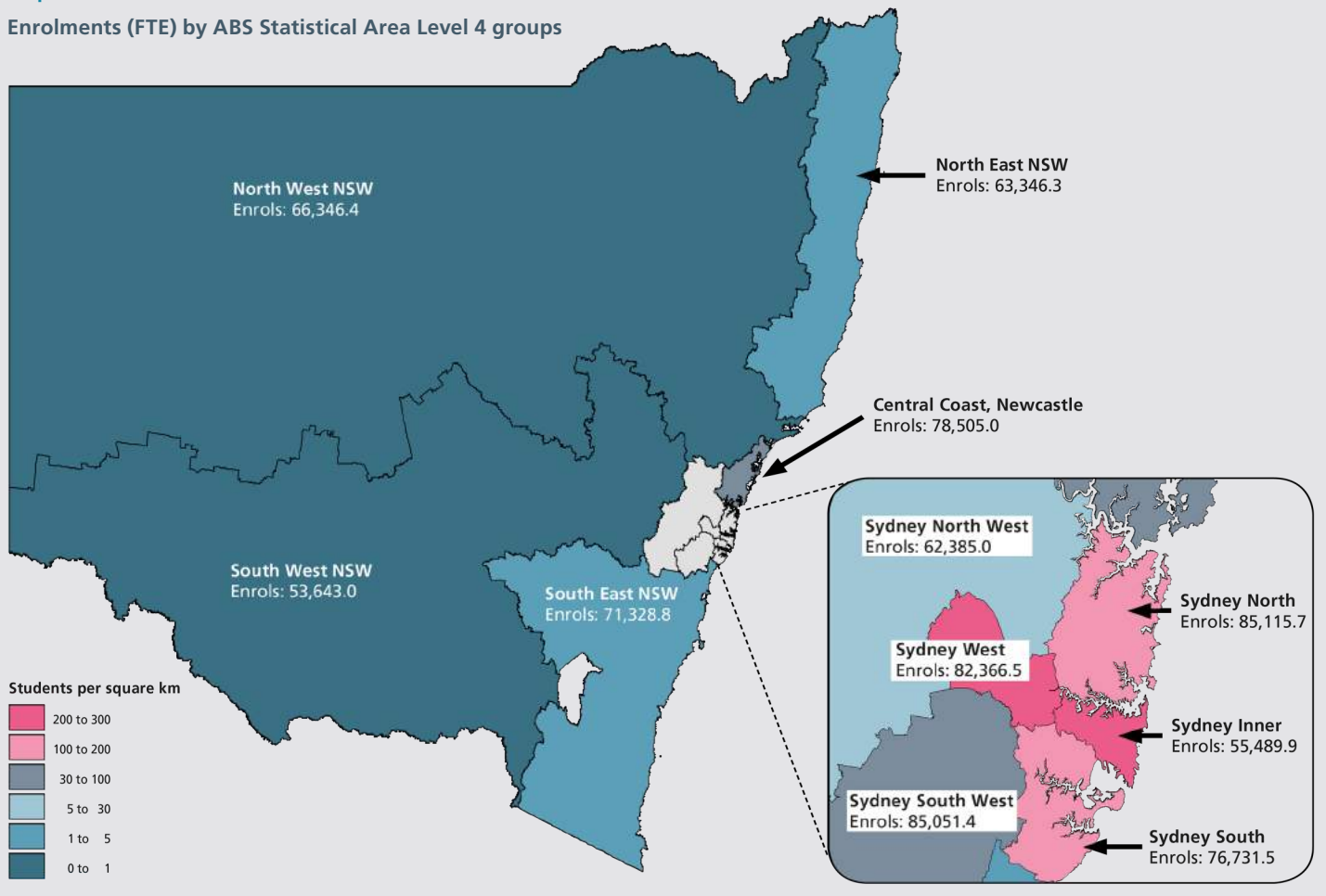
InBrief summarises the results of the census of students in NSW government schools undertaken on Friday 5 August 2016, and the census of NSW non-government schools undertaken by the Australian Government Department of Education and Training on the same day.

Mid-year Census

The Mid-Year Census includes data on NSW government schools (preschool, primary, secondary, central/community and schools for specific purposes) and students (age at 1 July, year level, full time/part time enrolment, gender, and Aboriginality).

Map 1

Enrolments (FTE) by ABS Statistical Area Level 4 groups



2016 InBrief summary

NSW government

Full-time equivalent (FTE) enrolments

Primary enrolments	475,073.0
Secondary enrolments	300,069.9
SSP enrolments	5,457.0
Total enrolments	780,599.9

Aboriginal and Torres Strait Islander students

Total Aboriginal & Torres Strait Islander enrolments	56,580.5
Percent Aboriginal & Torres Strait Islander enrolments	7.2%

Part-time students

Number of part-time students	2,173.0
FTE enrolments	1,342.9

Preschool Students

Number of preschool students	4,446.0
FTE enrolments	2,395.7

NSW government schools

Primary and infants schools	1,608
Central/community schools	66
Secondary schools	401
Schools for specific purposes (SSPs)	112
Environmental education centres (EECs)	23

Total government schools

Total government schools	2,210
Preschools attached to primary/infants schools	99
Separate preschools	1

Total preschools

100

NSW non-government

Full-time equivalent (FTE) enrolments

Primary enrolments	204,513.5
Secondary enrolments	209,074.2
Total enrolments	413,587.7

NSW non-government schools

Primary schools	494
Secondary schools	142
Primary/secondary schools	239
Special schools	54

Total non-government schools

929

Enrolments (FTE) by ABS Statistical Area Level 4 groups

Table 1 presents the NSW government schools' enrolment data using a geographical structure based on the Australian Statistical Geography Standard (ASGS). This is illustrated in Map 1. The ASGS is maintained by the Australian Bureau of

Statistics (ABS) and allows comparison of education statistics with other statistical data. ASGS Statistical Area Level 4 (SA4) boundaries in New South Wales have been combined into 11 groups for reporting and publication of Department data.

Table 1

Enrolments (FTE) by ABS Statistical Area Level 4 groupings and grade group in NSW government schools, mid-year 2016

Statistical Area Level 4 Grouping	K-2	Yr3-6	Primary Total	Yr7-10	Yr11-12	Secondary Total	SSP	Statistical Area Total	% of NSW
Sydney-North	25,672	30,328	56,000	19,431	9,243.7	28,674.7	441	85,115.7	10.9%
Sydney-Inner	16,581	18,374	34,955	13,719	6,499.9	20,218.9	316	55,489.9	7.1%
Sydney-South	20,366	25,633	45,999	20,866	9,111.5	29,977.5	755	76,731.5	9.8%
Sydney-South West	20,977	28,731	49,708	24,782	9,857.4	34,639.4	704	85,051.4	10.9%
Sydney-West	24,490	29,078	53,568	19,657	8,130.5	27,787.5	1,011	82,366.5	10.6%
Sydney-North West	16,301	21,267	37,568	17,141	7,381.0	24,522.0	295	62,385.0	8.0%
Sydney Total	124,387	153,411	277,798	115,596	50,224.0	165,820.0	3,522	447,140.0	57.3%
North East NSW	15,711	21,110	36,821	18,801	7,584.3	26,385.3	140	63,346.3	8.1%
North West NSW	17,034	22,861	39,895	19,667	6,549.4	26,216.4	235	66,346.4	8.5%
South West NSW	13,688	18,146	31,834	15,700	5,577.0	21,277.0	532	53,643.0	6.9%
South East NSW	18,350	24,808	43,158	20,306	7,454.8	27,760.8	410	71,328.8	9.1%
Central Coast, Newcastle	19,340	26,063	45,403	23,479	9,005.0	32,484.0	618	78,505.0	10.1%
Regional Total	84,190	113,085	197,275	98,037	36,212.9	134,249.9	1,935	333,459.9	42.7%
NSW	208,577	266,496	475,073	213,633	86,436.9	300,069.9	5,457	780,599.9	100.0%

Notes:

- Students in Distance Education are included with their appropriate grade levels.
- Primary support students are included in Y3-6. Secondary support students are included in Y7-10.

In 2016, 57.3 per cent of government students were enrolled in schools within the Sydney area. The proportion of primary students enrolled in Sydney schools was 58.5 per cent.

All Statistical Area Level 4 groups experienced an increase in primary enrolments in 2016 from 2015. Sydney-West and Sydney-North recorded the largest growth in primary enrolments for the third year in a row, each with an increase of 2,117 and 1,604 enrolments respectively between 2015 and 2016.

For secondary enrolments only two area groups recorded a marked increase in enrolments. Sydney North rose by 1.6 per cent or 449 students following a rise of 1.6 per cent in 2015. Sydney West increased by 0.9 per cent. All other area

groups were stable or recorded a decline of between 0.6 and 1.6 per cent.

As Map 1 shows, the areas of Sydney-North and Sydney-South West have the highest number of enrolments, with 85,115.7 and 85,051.4 enrolments respectively.

Aboriginal enrolments (FTE)

Map 2 shows the percentage of NSW government students in each Statistical Area Level 4 group who identify as Aboriginal. In North West NSW 21.8 per cent of students identified as Aboriginal, compared to five per cent or less in each statistical area group in Sydney.

Map 2

Percentage of enrolments (FTE) identified as Aboriginal by ABS Statistical Area Level 4 groupings in NSW government schools, mid-year 2016

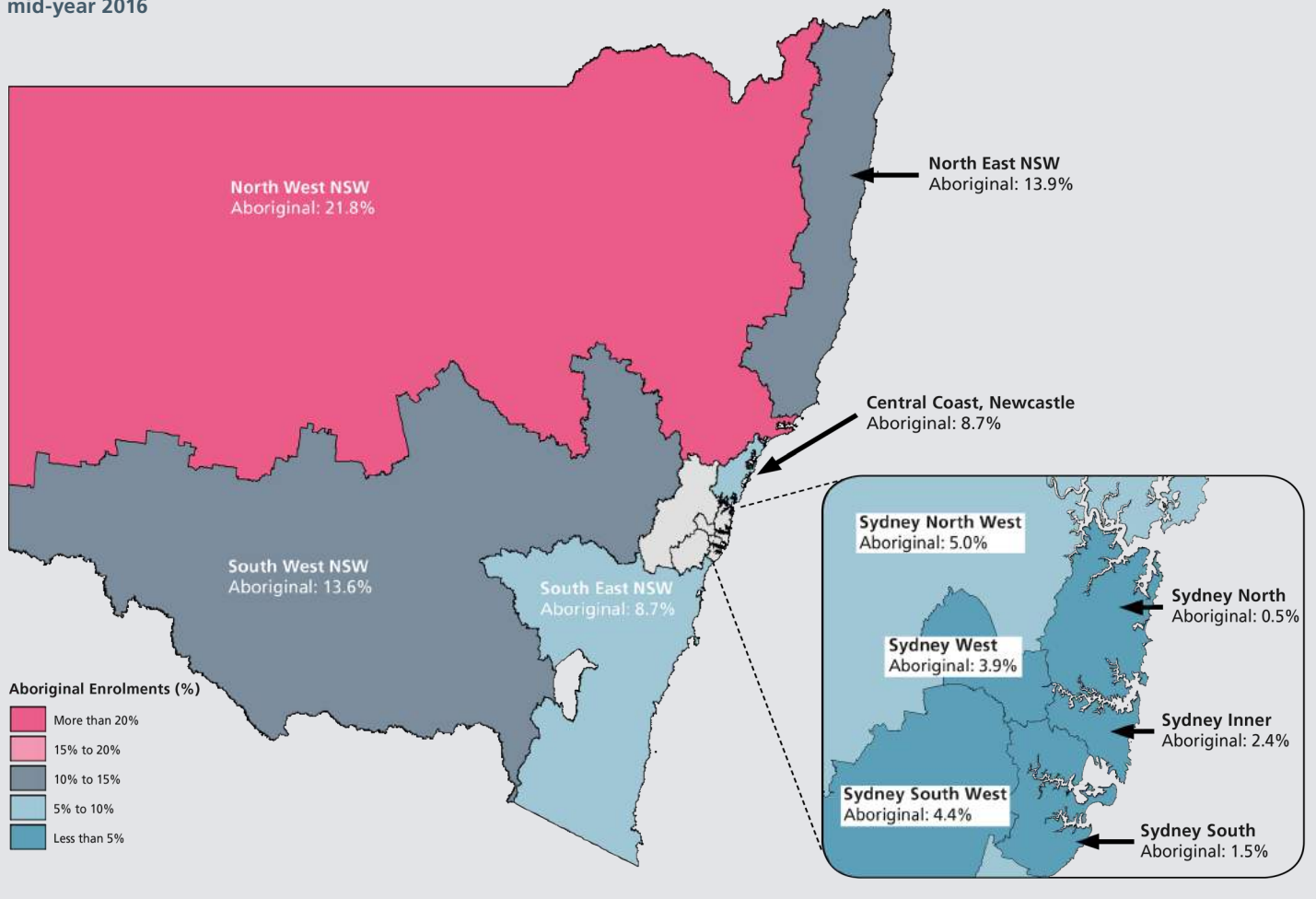


Table 2

Enrolments (FTE) of Aboriginal students by ABS Statistical Area Level 4 groupings and grade group in NSW government schools, mid-year 2016

Statistical Area Level 4 Grouping	K-2	Yr3-6	Primary Total	Yr7-10	Yr11-12	Secondary Total	Statistical Area Total	% of NSW
Sydney-North	104	133	237	137	47.5	184.5	434.5	0.8%
Sydney-Inner	380	435	815	373	129.4	502.4	1,354.4	2.4%
Sydney-South	275	393	668	346	98.8	444.8	1,137.8	2.0%
Sydney-South West	946	1,373	2,319	1,054	268.6	1,322.6	3,750.6	6.6%
Sydney-West	840	1,159	1,999	852	246.0	1,098.0	3,217.0	5.7%
Sydney-North West	821	1,035	1,856	970	256.0	1,226.0	3,125.0	5.5%
Sydney Total	3,366	4,528	7,894	3,732	1,046.3	4,778.3	13,019.3	23.0%
North East NSW	2,300	3,041	5,341	2,641	789.1	3,430.1	8,835.1	15.6%
North West NSW	3,874	4,979	8,853	4,357	1,126.2	5,483.2	14,439.2	25.5%
South West NSW	1,947	2,492	4,439	2,173	557.9	2,730.9	7,285.9	12.9%
South East NSW	1,555	2,217	3,772	1,900	476.5	2,376.5	6,200.5	11.0%
Central Coast, Newcastle	1,688	2,355	4,043	2,088	555.5	2,643.5	6,797.5	12.0%
Regional Total	11,365	15,085	26,450	13,160	3,505.2	16,665.2	43,561.2	77.0%
NSW	14,731	19,613	34,344	16,892	4,551.5	21,443.5	56,580.5	100.0%
Aboriginal total as a percentage of total NSW enrolments	7.1%	7.4%	7.2%	7.9%	5.3%	7.1%	7.2%	

Notes:

- Students in Distance Education are included with their appropriate grade levels.
- Primary support students are included in Y3-6. Secondary support students are included in Y7-10.
- There were 793 Aboriginal students enrolled in SSPs, representing 17% of total SSP enrolments. Aboriginal students in SSPs are not included in the grade group data but are included in the Statistical Area total column.

Figure 1

Enrolments (FTE) of Aboriginal students by ABS Statistical Area Level 4 grouping and grade group in NSW government schools, mid-year 2016

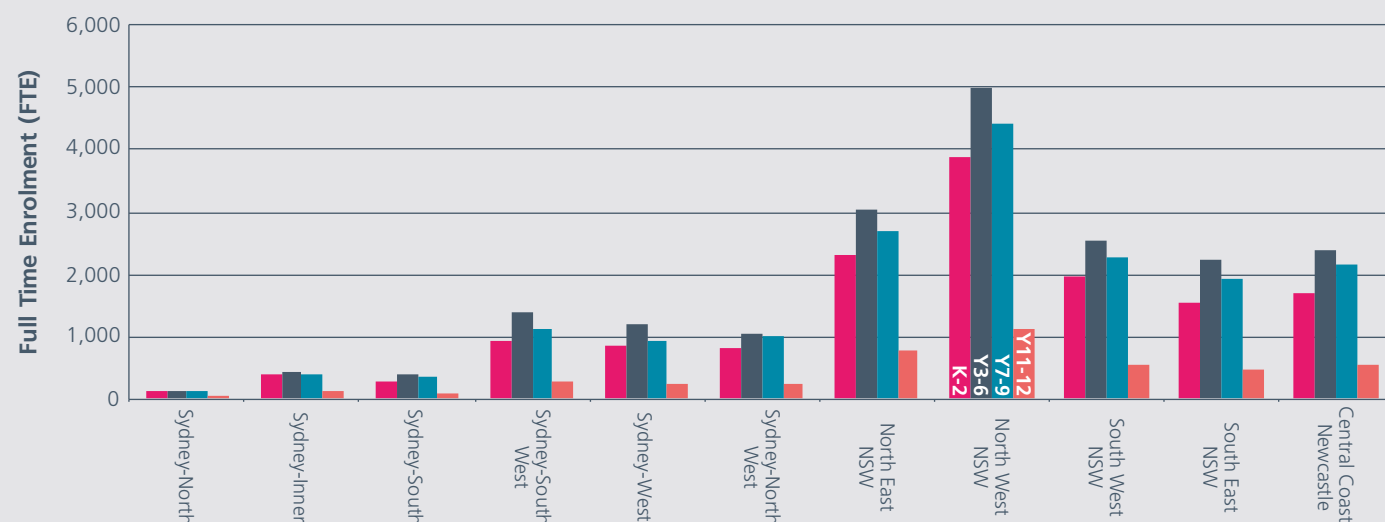


Table 2 shows NSW government student enrolments of Aboriginal students by statistical area groupings and grade groups, and Figure 1 illustrates this comparison.

The majority (77.0 per cent) of NSW government Aboriginal students are enrolled outside of Sydney. Although the six Sydney statistical area groupings account for 57.3 per cent of all enrolments in NSW, only 23.0 per cent of NSW Aboriginal students are enrolled in Sydney.

North West NSW and North East NSW had the highest Aboriginal enrolments at 25.5 and 15.6 per cent of total

Aboriginal enrolments respectively. In Sydney, the statistical area groupings of Sydney-South West, Sydney-West and Sydney-North West had relatively higher Aboriginal students' enrolments, at 6.6 per cent, 5.7 and 5.5 per cent of total Aboriginal enrolments respectively. In contrast, Sydney North only had 0.8 per cent of Aboriginal enrolments, compared with 10.9 per cent of all students.

Overall, Aboriginal student enrolments have increased by 2,430.1 students or 4.5 per cent from 54,150.4 in 2015 to 56,580.5 in 2016. North West NSW recorded the largest increase of 543.8 students, from 13,895.4 in 2015 to 14,439.2 in 2016.

2016 enrolments (FTE)

Table 3 shows NSW government school enrolments by school level and Figure 2 shows government school enrolments as a proportion of 2001 total enrolments. From 2008 to 2014 enrolments in Years 11 and 12 rose, largely as a result of the raising of the school leaving age in 2010. However Year 11 and 12 enrolments declined between 2014 and 2016 and now represent 108 per cent of 2001 enrolments.

Kindergarten to Year 2 enrolments have increased markedly since 2009 and now represent 109 per cent of 2001 enrolments. These additional enrolments are the result of demographic changes, with larger numbers of children born in NSW since 2005.

Year 3 to 6 enrolments declined from 2001 to 2007 and remained at around 95 per cent of 2001 enrolments until 2013. However enrolments have grown rapidly in the last three years and are expected to keep rising. This is caused by the increased birth rate from 2005, with Kindergarten to Year 2 children now moving into Years 3 to 6.

Year 7 to 10 enrolments rose a little from 2001 to 2006 and have since fallen to 96 per cent of 2001 enrolment. Between 2014 and 2016 enrolments have remained at almost 97 per cent.

The total number of full-time equivalent students in NSW government schools increased by 8,621.8 or 1.1 per cent, from 771,978.1 in 2015 to 780,599.9 in 2016. This is the eighth year in a row that total government school enrolments have increased after a sustained downward trend between 1998 and 2008. The increase in total number of full-time equivalent students in NSW government schools has been driven by the increase in primary enrolments each year since 2008, which has been greater than the decrease in secondary enrolments since 2011. In 2016, primary enrolments increased by 9,306, SSP enrolments increased by 117 and secondary enrolments decreased by 801.2.

Enrolments in NSW government schools are affected by a number of factors, including the school age population, the participation rate and the enrolment share between government and non-government schools. For students of compulsory school age (5 to 17 inclusive), the participation rate is close to 100 per cent; however, after this age it declines noticeably (from 2010, all NSW students must complete Year 10. After Year 10 and until the age of 17 students must be in school and/or in approved education or training and/or in full-time paid employment).

Table 3

Enrolments (FTE) in NSW government schools by grade level and schools for specific purposes, 1996-2016

Year	Primary	Secondary	SSP	Total
1996	450,465	306,823.3	3,749	761,037.3
1997	451,560	308,922.7	3,690	764,172.7
1998	452,568	309,133.7	3,673	765,374.7
1999	453,454	308,116.1	3,762	765,332.1
2000	454,363	303,681.0	3,792	761,836.0
2001	451,093	301,774.4	3,873	756,740.4
2002	447,897	302,988.0	3,915	754,800.0
2003	443,213	304,034.0	3,938	751,185.0
2004	438,677	302,849.6	3,981	745,507.6
2005	434,876	302,578.3	4,124	741,578.3
2006	432,660	303,622.0	4,133	740,415.0
2007	429,900	304,457.7	4,278	738,635.7
2008	428,331	303,055.7	4,392	735,778.7
2009	429,000	303,180.7	4,466	736,646.7
2010	430,177	307,291.2	4,673	742,141.2
2011	433,873	306,893.2	4,774	745,540.2
2012	438,681	304,632.1	4,921	748,234.1
2013	446,848	303,433.6	5,064	755,345.6
2014	456,151	302,339.7	5,207	763,697.7
2015	465,767	300,871.1	5,340	771,978.1
2016	475,073	300,069.9	5,457	780,599.9

Notes:

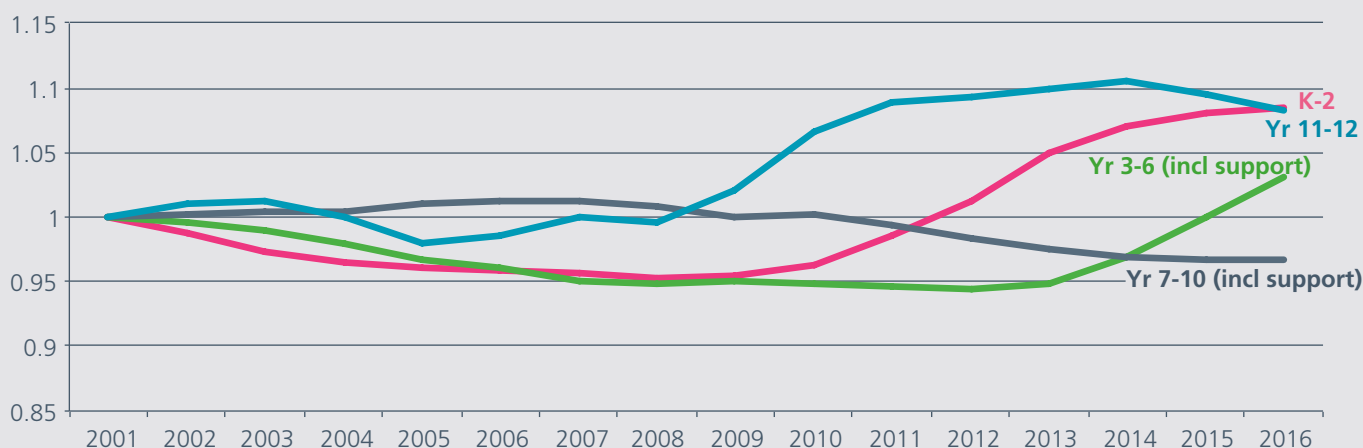
Since 1993 some students have enrolled part-time. All enrolments are reported in full-time equivalent units (FTEs) and include full-time and part-time students.

Kindergarten enrolments increased by 763 students, or 1.1 per cent, in 2016, continuing the trend of increasing Kindergarten enrolments since 2008 with the exception of a small decrease in 2014. Kindergarten enrolments generally reflect the NSW birth rate five years' previously.

The largest increases in enrolments were in Year 4 and Year 5. Year 4 enrolments rose by 4.2 per cent from 64,171 students in 2015 to 66,884 in 2016, while Year 5 enrolments rose by 4.6 per cent from 60,670 students in 2015 to 63,456 in 2016 (individual grade level data not presented in tables). This is due to the progression of large numbers of Kindergarten students enrolled in 2011 and 2012.

Figure 2

NSW government school enrolments (FTE) as a proportion of total 2001 enrolments (FTE) by grade groups, 2001-2016



Government enrolment share (FTE)

School enrolment growth can be affected by parental choice in selecting non-government education, the base school population, the changing legal and policy framework in NSW and the ability of schools to respond to demographic changes. Figure 3 shows the change in enrolments of government and non-government schools in each year since 2004 and Table 4 provides data in selected years from 1901.

Overall enrolments in NSW have increased by more than 8,000 each year since 2010, and by more than 12,000 in each of the last four years. Since 2008, the total number of students enrolled in education in NSW has increased by 84,238 students. The significant annual increase in school enrolments observed in 2010 coincided with changes to the NSW school leaving age with more recent changes the result of increased births.

For the last three years, the enrolment growth of government schools surpassed the enrolment growth of non-government schools. Government enrolments increased by 8,622 in 2016, compared with an increase of 3,961 for non-government schools. The growth in government enrolments from 2015 to 2016 is driven by a large increase in government primary aged enrolments of by 9,306 students. Secondary students decreased by 801 students from 2015 to 2016.

Table 4

Enrolments (FTE) and percentage of enrolment share in NSW government and non-government schools, 1901-2016

Year	Government Enrolment	Government Share	Non-government Enrolment	Non-government Share	Total
1901	210,588	77.6%	60,837	22.4%	271,425
1911	221,810	78.3%	61,550	21.7%	283,360
1921	315,228	80.1%	78,460	19.9%	393,688
1931	387,881	80.8%	92,285	19.2%	480,166
1941	337,073	76.2%	105,319	23.8%	442,392
1951	405,906	75.3%	133,019	24.7%	538,925
1961	610,883	75.2%	201,147	24.8%	812,030
1971	771,713	77.6%	222,195	22.4%	993,908
1981	790,575	76.9%	237,853	23.1%	1,028,428
1986	755,257	73.6%	270,745	26.4%	1,026,002
1991	746,417	72.0%	290,896	28.0%	1,037,313
1996	761,034	71.4%	305,373	28.6%	1,066,407
2001	756,738	68.7%	344,228	31.3%	1,100,966
2002	754,800	68.2%	351,455	31.8%	1,106,255
2003	751,185	67.7%	357,716	32.3%	1,108,901
2004	745,508	67.2%	363,090	32.8%	1,108,598
2005	741,578	66.9%	367,476	33.1%	1,109,054
2006	740,415	66.7%	369,902	33.3%	1,110,317
2007	738,636	66.5%	371,822	33.5%	1,110,458
2008	735,779	66.3%	374,171	33.7%	1,109,949
2009	736,647	66.2%	375,522	33.8%	1,112,169
2010	742,141	66.2%	378,288	33.8%	1,120,429
2011	745,540	66.0%	384,209	34.0%	1,129,749
2012	748,234	65.7%	390,756	34.3%	1,138,990
2013	755,346	65.4%	398,813	34.6%	1,154,159
2014	763,698	65.4%	404,623	34.6%	1,168,321
2015	771,978	65.3%	409,627	34.7%	1,181,605
2016	780,600	65.4%	413,588	34.6%	1,194,188

Source: Australian Bureau of Statistics, Schools Australia 2016

Notes:

- From 1993 the table includes full-time and part-time students, reported in full-time equivalent units (FTE).
- Government and non-government school data for 1901-1961 include students in ACT schools.

Figure 3

Change in enrolments (FTE) from the previous year, NSW government and non-government schools, 2004-2016

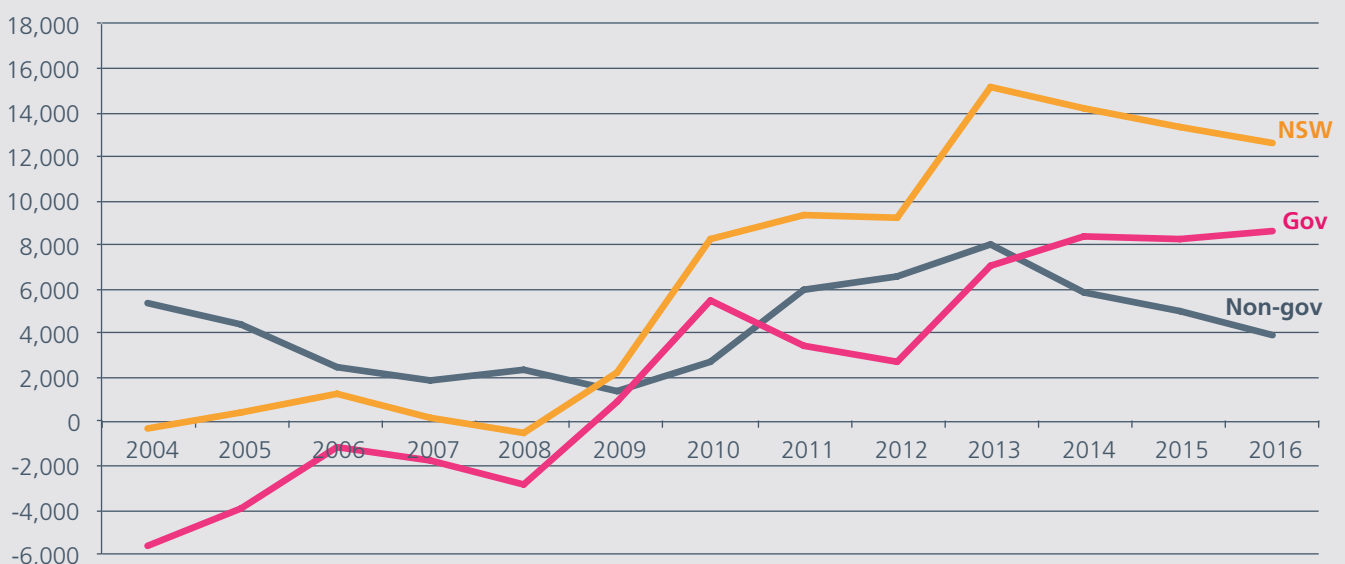


Table 4 shows the enrolment share for students at government and non-government schools in NSW. Between 2013 and 2016, total government enrolment share was relatively stable, at between 65.3 and 65.4 per cent. From 2005 to 2013, total government enrolment share fell on average around 0.2 percentage points each year, except in 2010 when enrolment share remained unchanged at 66.2 per cent. The decline has slowed or halted in the past three years.

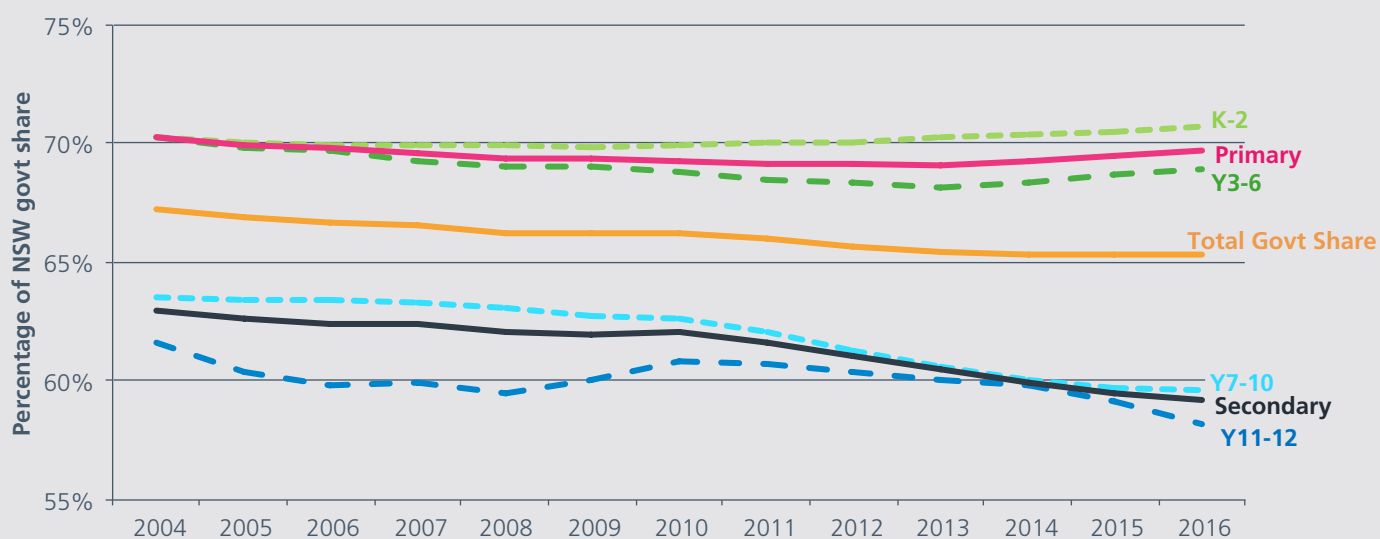
Figure 4 shows NSW government enrolment share by education level. Primary enrolment share declined slowly from 2004 to 2013 but has since risen slightly. Primary enrolment share

was around 7 to 8 percentage points higher than secondary enrolment share until 2013, however the gap widened to over 10 percentage points in 2015 and 2016. Within primary education, Kindergarten to Year 2 enrolment share rose from 70.5 per cent in 2015 to 70.7 in 2016, and Year 3 to Year 6 increased from 68.7 per cent in 2015 to 68.9 in 2016.

In 2016, junior secondary enrolment share plateaued at 59.6 per cent, while senior secondary enrolment share decreased by 0.9 percentage points to 58.2 per cent, continuing the decline since 2011.

Figure 4

Percentage of NSW government enrolments (FTE) share by grade group, 2004-2016



Government preschool

In NSW, most children receiving a preschool education are enrolled at a government funded community preschool or in a Long Day Care centre. The NSW government operates 100 preschools, providing a preschool education to over 4,000 children.

Table 5 shows that the number of children enrolled in government preschools increased from 4,278 in 2015 to 4,446 in 2016. FTE enrolments also increased, from 2,306.6 in 2015 to 2,395.7 in 2016.

Aboriginal preschool enrolments accounted for 14.0 per cent of FTE enrolments in 2016, a decrease of 0.7 percentage points since 2015. Aboriginal preschool enrolments rose by 12 students or 2.1 per cent, from 565 in 2015 to 577 in 2016.

Table 5

Number of students and enrolment full-time equivalents (FTE) in NSW government preschools, 2007-2016

Year	All Students		Aboriginal and Torres Strait Islander Students		% of Total FTE
	Students	FTE	Students	FTE	
2007	4,239	2,422.6	404	262.3	10.8%
2008	4,285	2,516.9	409	269.5	10.7%
2009	4,291	2,455.5	491	317.7	12.9%
2010	4,325	2,498.6	493	315.1	12.6%
2011	4,416	2,484.9	507	328.7	13.2%
2012	4,424	2,460.7	599	379.9	15.4%
2013	4,433	2,371.1	555	326.8	13.8%
2014	4,365	2,356.8	533	321.9	13.7%
2015	4,278	2,306.6	565	339.6	14.7%
2016	4,446	2,395.7	577	335.5	14.0%

Early intervention preschool children

Children enrolled in an early intervention class at a NSW government school were included in the government school census for the first time in 2012. Early intervention classes provide early childhood education in a preschool setting for children with a disability. Enrolments in early intervention classes decreased by 3 students, from 710 in 2015 to 707 in 2016. The percentage of students enrolled in an early intervention program who were Aboriginal increased from 12.4 per cent in 2015 to 13.9 per cent in 2016.

Table 6

Number of students and enrolment full-time equivalents (FTE) in NSW government early intervention programs, 2012-2016

Year	All Students		Aboriginal and Torres Strait Islander Students		
	Students	FTE	Students	FTE	% of Total FTE
2012	743	151.9	68	13.0	8.6%
2013	684	147.7	76	14.8	10.0%
2014	720	168.1	91	16.7	9.9%
2015	710	162.2	102	20.1	12.4%
2016	707	146.3	105	20.4	13.9%

Apparent retention rate

Apparent retention measures the proportion of students who remain at school through to Year 10, 11 or 12 and is one measure of students' engagement with education. For example, the Year 7 to Year 10 apparent retention rate in 2016 is the percentage of Year 10 enrolments in 2016 compared to Year 7 enrolments in 2013. Retention is affected by legal and policy changes such as the school leaving age legislation which came into effect in 2010.

Table 7 and Figure 5 show that NSW government apparent retention rates generally increased or were unchanged in 2016 compared with 2015, for all students and for girls.

However, apparent retention for boys from Year 7 to 11, Year 10 to 11 and Year 10 to 12, declined by around 1 percentage point on average from 2015 to 2016.

Table 7

Apparent retention rates by retention period and gender in NSW government schools, 2005-2016

Year	Years 7-10			Years 7-11			Years 7-12			Years 10-11			Years 10-12		
	Boys	Girls	Total	Boys	Girls	Total	Boys	Girls	Total	Boys	Girls	Total	Boys	Girls	Total
2005	94.8	95.4	95.1	72.5	83.2	77.7	61.5	73.0	67.2	76.5	86.6	81.4	64.2	75.9	69.9
2006	95.2	95.8	95.5	73.1	83.1	78.0	60.5	72.5	66.4	77.1	87.1	82.0	63.9	75.5	69.6
2007	96.0	96.6	96.3	73.9	83.8	78.7	60.0	71.5	65.7	77.6	87.5	82.4	63.3	75.0	69.1
2008	96.6	96.6	96.6	73.9	84.0	78.8	60.3	72.0	66.0	77.0	86.9	81.9	63.3	75.2	69.1
2009	95.6	97.4	96.5	77.3	85.1	81.1	61.5	73.9	67.6	80.0	88.1	84.0	64.1	76.5	70.2
2010	99.4	100.2	99.8	81.1	89.7	85.3	64.9	74.8	69.7	84.8	92.2	88.4	67.1	77.4	72.2
2011	102.2	102.4	102.3	83.3	91.3	87.2	66.1	77.6	71.7	83.7	91.1	87.3	69.1	79.7	74.3
2012	101.4	102.8	102.1	86.1	93.3	89.6	66.9	77.4	72.0	84.3	91.0	87.6	67.3	77.3	72.2
2013	102.0	102.1	102.0	88.1	94.6	91.3	69.0	79.7	74.3	86.9	92.0	89.4	67.6	77.8	72.6
2014	103.0	103.2	103.1	89.3	94.9	92.1	70.9	81.2	75.9	87.6	92.9	90.2	69.9	79.0	74.4
2015	103.3	103.9	103.6	90.2	95.9	93.0	71.3	80.7	75.9	87.6	93.0	90.2	70.0	79.0	74.4
2016	103.7	105.0	104.3	89.4	96.9	93.1	71.1	81.6	76.2	86.5	93.3	89.9	69.0	79.1	73.9

Notes:

- All enrolments are reported in full-time equivalent units (FTEs), and include full-time and part-time students. Students enrolled in distance education classes are included with their appropriate grade levels.
- See explanatory note 2.

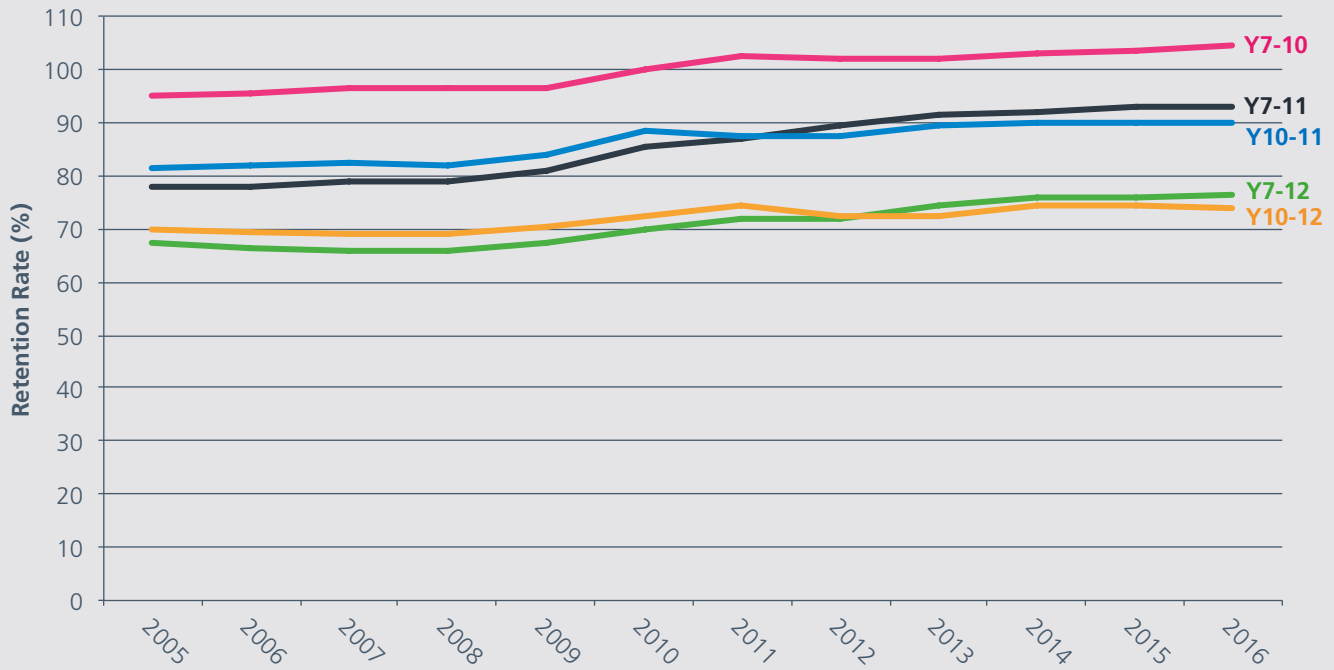
As seen in Figure 5, 2016 continues the highest retention rates since 2005 across most cohort groupings, with the exception of Year 10 to 11 and Year 10 to 12, where apparent retention rates decreased by 0.3 percentage points and 0.5 percentage points respectively.

By gender, the apparent retention rates show a significant difference beyond Year 10. Girls are significantly more likely

to remain at school until Year 11 or Year 12 than boys, with the Year 10 to 12 apparent retention rates for girls 10.1 percentage points higher than that of boys in 2016. While the overall Year 7 to Year 12 apparent retention rate increased by 0.3 percentage points from 75.9 per cent in 2015 to 76.2 per cent in 2016, the gap between girls and boys increased from 9.4 to 10.5 percentage points.

Figure 5

Apparent retention rates by retention period in NSW government schools, 2005-2016



Explanatory Notes

1. Mid-year census

The Census is used for state and federal planning and accountability, including reporting requirements under the NSW Education Act 1990 and the National Education Agreement 2012. Data contribute to the National School Statistics Collection (NSSC) which is collated by the Australian Bureau of Statistics (ABS) from state and territory student, school and staffing data. Preschool data contribute to the ABS Early Childhood Education and Care (ECEC) collection.

2. Apparent retention rates

Retention rates are 'apparent' as they do not track individual students through their final years of secondary schooling. What they measure is the ratio of the total number of full-time school students in a designated year (e.g. Year 12 in 2016) divided by the total number of full-time students in a previous year (e.g. Year 7 in 2011). This would be the Year 7 to 12 apparent retention rate in 2016.

Care should be taken in the interpretation of apparent retention rates, which can exceed 100%, because the method of calculation does not take into account a range of factors such as migration, interstate movements of students, transfers to and from non-government schools, part-time schooling, students repeating a year of schooling, or students pursuing other education and training pathways.

3. Norfolk Island Central School

From 2016, the NSW Department of Education has provided school education services under an agreement with the Australian government. Norfolk Island Central School is included in NSW data for the first time in 2016. It has not been designated an SA4 group, so is included in regional and NSW totals, but not included in individual SA4 group data (tables 1 and 2).

Further Information:

Each year the Australian Bureau of Statistics releases full publications and datacubes of government and non-government school enrolments for all states and territories.

www.abs.gov.au

ABS publication details:

- 4221.0 – Schools Australia, 2016
- 4240.0 – Preschool Education Australia, 2016



Centre for Education Statistics and Evaluation
GPO Box 33
Sydney NSW 2001
Australia

 02 9561 1211

 cese@det.nsw.edu.au

 www.cese.nsw.gov.au

© June 2017
NSW Department of Education



Education
Centre for Education
Statistics & Evaluation