

Fact sheet

# Impacts of COVID-19 on recent school leavers' post-school destinations

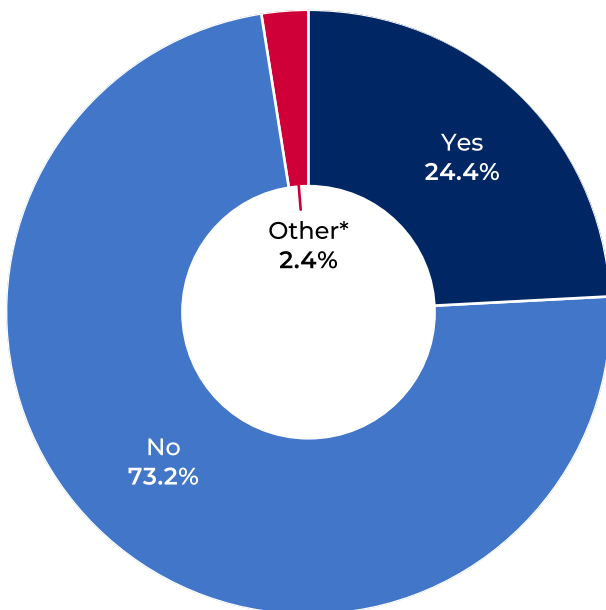
## 2020 NSW Post-School Destinations and Experiences Survey

This fact sheet provides a high-level overview of findings from the 2020 NSW Post-School Destinations and Experiences Survey. Of those recent school leavers who answered the survey:

- 1,319 early school leavers
- 1,092 Year 12 completers

were asked to answer a series of themed questions about the impacts of COVID-19 on their post-school destinations to inform this fact sheet.

### Did COVID-19 impact recent school leavers' post-school destinations?



COVID-19 impacted recent school leavers' post-school destinations similarly, regardless of whether they were:

- An early school leaver (22.2% changed their destination as a result of COVID-19) or a Year 12 completer (26.9% changed their destination as a result of COVID-19)
- Male or female (23.2% vs. 25.8%)
- From a lower parental SES\* other\*\* background or a higher parental SES background (22.2% vs. 25.5%)
- From Greater Sydney or the Rest of NSW (24.5% vs. 24.3%)

The **top 5** ways in which COVID-19 changed recent school leavers' plans:

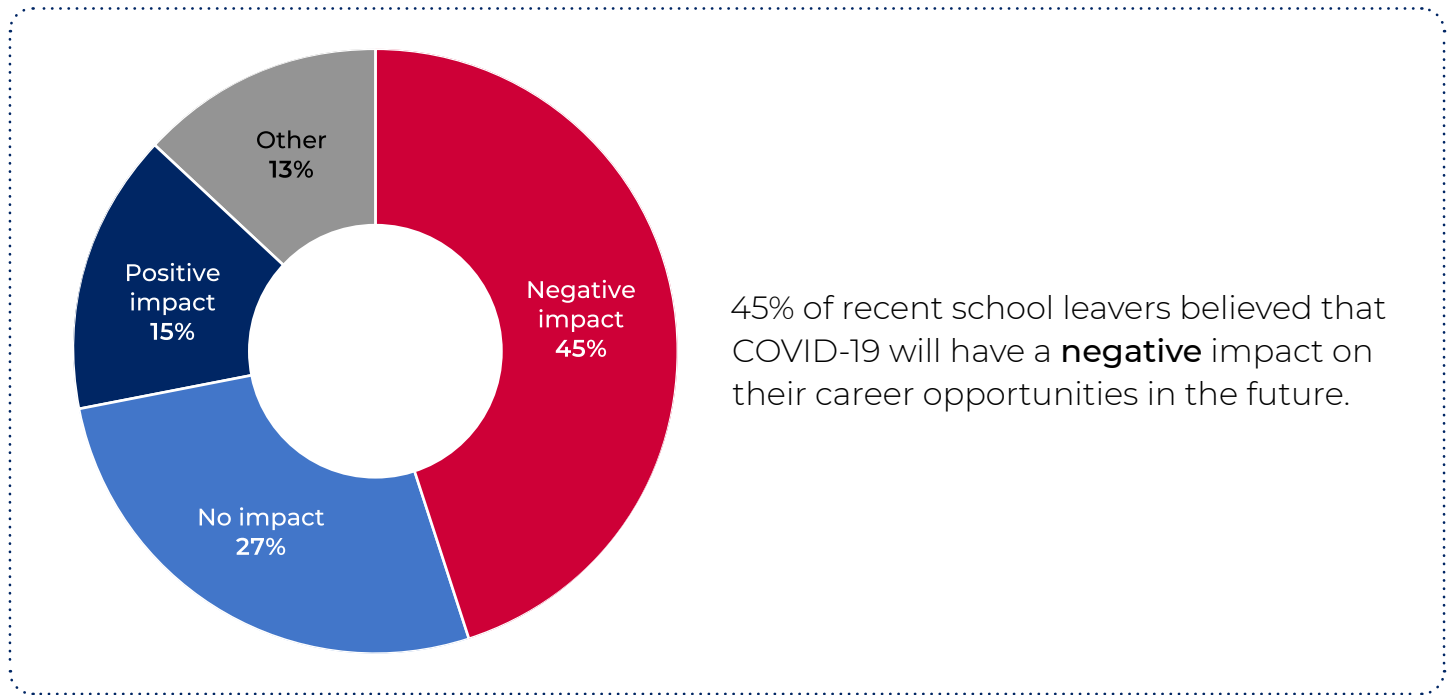
1. Inability to find a job (22.5%)
2. Working in a job when they did not expect to be (16.3%)
3. Course, traineeship or apprenticeship changed to remote learning (11.6%)
4. Worked fewer hours than normal (9.0%)
5. Studying, undertaking a traineeship or apprenticeship when they did not expect to be (4.8%)

Around one-quarter of recent school leavers reported that their post-school destination had changed as a result of COVID-19.

\* SES means socio-economic status.

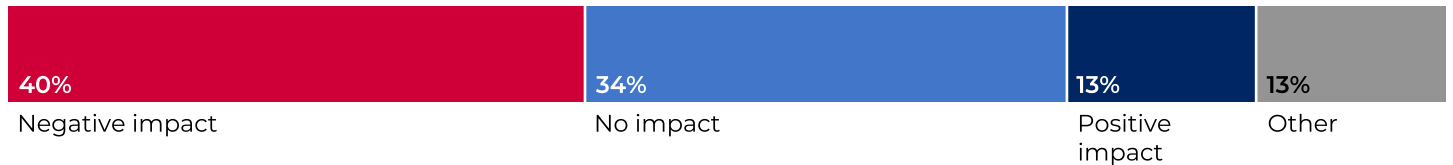
\*\* Other includes students who reported that they did not know, provided another answer or refused to answer.

# Impacts of COVID-19 on recent school leavers' future career opportunities

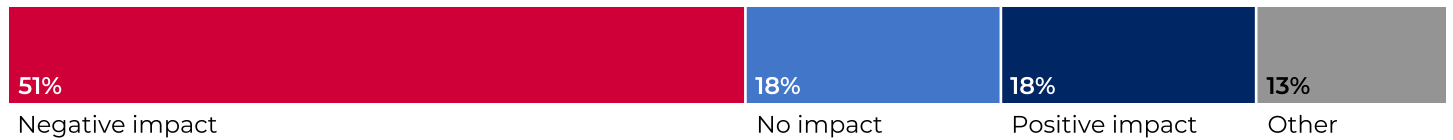


**Early school leavers** were more likely to believe that COVID-19 would have **no impact**. **Year 12 completers** were more likely to believe that COVID-19 would have a **positive impact** or a **negative impact**.

## Early school leavers

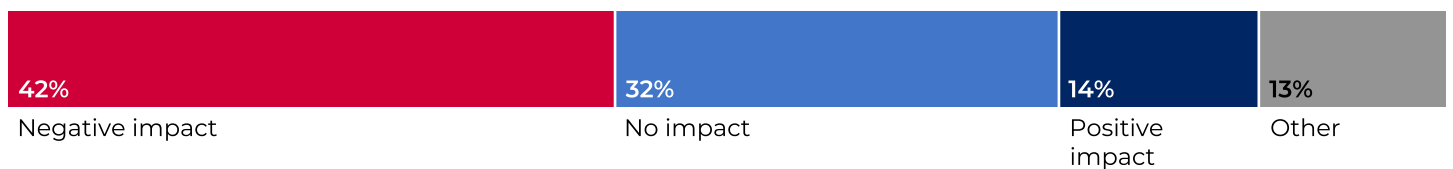


## Year 12 completers

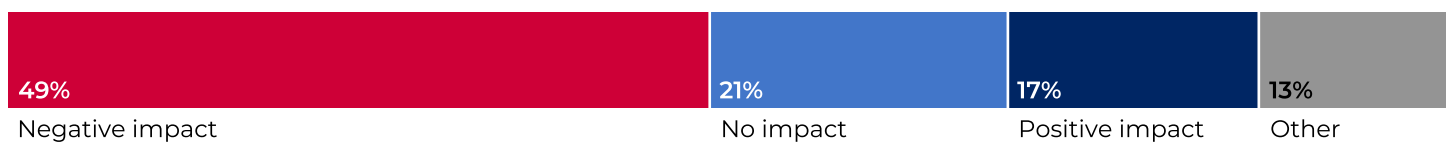


**Males** were more likely to believe that COVID-19 would have **no impact**. **Females** were more likely to believe that COVID-19 would have a **negative impact**.

## Males



## Females

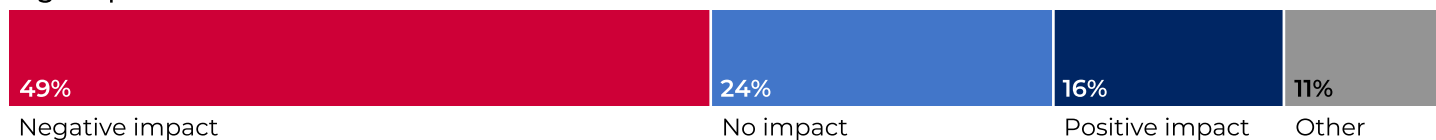


Lower parental SES students were more likely to believe that COVID-19 would have **no impact**. Higher parental SES students were more likely to believe that COVID-19 would have a **negative impact**.

#### Lower parental SES



#### Higher parental SES

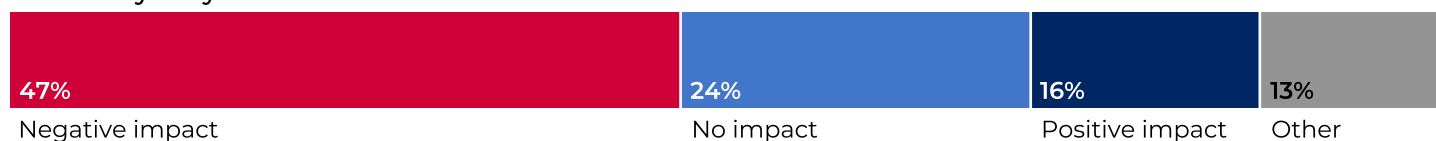


Students in **regional NSW** were more likely to believe that COVID-19 would have **no impact**.

#### Regional NSW



#### Greater Sydney



#### Centre for Education Statistics and Evaluation

GPO Box 33, Sydney NSW 2001, Australia

Visit our website to subscribe to the CESE newsletter

☎ 02 7814 1527

🌐 [education.nsw.gov.au/cese](http://education.nsw.gov.au/cese)

✉ [info@cese.nsw.gov.au](mailto:info@cese.nsw.gov.au)

📄 [yammer.com/det.nsw.edu.au](https://yammer.com/det.nsw.edu.au)

This work is licensed under the [Creative Commons Attribution 4.0 International License](https://creativecommons.org/licenses/by/4.0/)

