

Fact sheet

Low socioeconomic status

Pathways Outcomes for Learners

Centre for Education Statistics and Evaluation

This fact sheet provides a high-level overview of findings from the Pathways Outcomes for Learners dashboard relating to students from **low socioeconomic status (SES) areas**.

The **Pathways Outcomes for Learners** dashboard maps the journeys of about 140,000 NSW students from school at age 15 (in 2004 and 2005) to employment at age 24 (in 2013 and 2014). Socioeconomic status is based on the student's home address in Year 10 using Socio-Economic Indexes for Areas (SEIFA).¹ This fact sheet compares outcomes for NSW students from the most disadvantaged suburbs (bottom 25%) with outcomes for students from the most advantaged suburbs (top 25%).

¹ SEIFA is a product developed by the Australian Bureau of Statistics (ABS). Within SEIFA, the Index of Relative Socio-Economic Advantage and Disadvantage (IRSAD) was used to determine the most advantaged/disadvantaged suburb variable for the Pathways Outcomes for Learners dashboard.

Secondary enrolments from age 15



65% of students from low SES areas completed Year 12

Outcomes at age 24²

Students from low SES areas

54% earning above minimum wage

12% studying

16% earning below minimum wage

9% income support

10% no available data

Students from high SES areas

57% earning above minimum wage

13% studying

16% earning below minimum wage

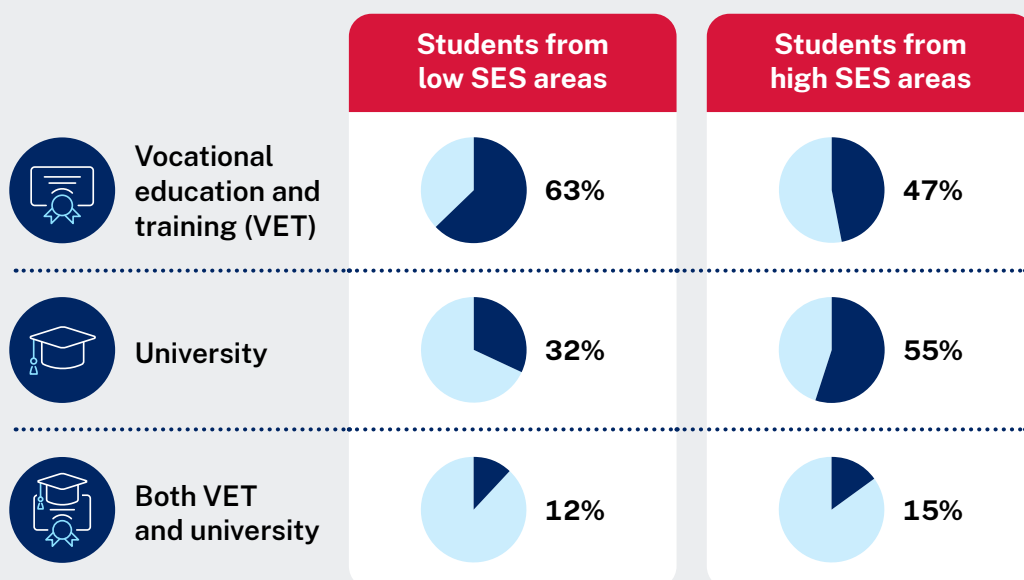
3% income support

11% no available data

54% of students from low SES areas were earning above minimum wage at age 24

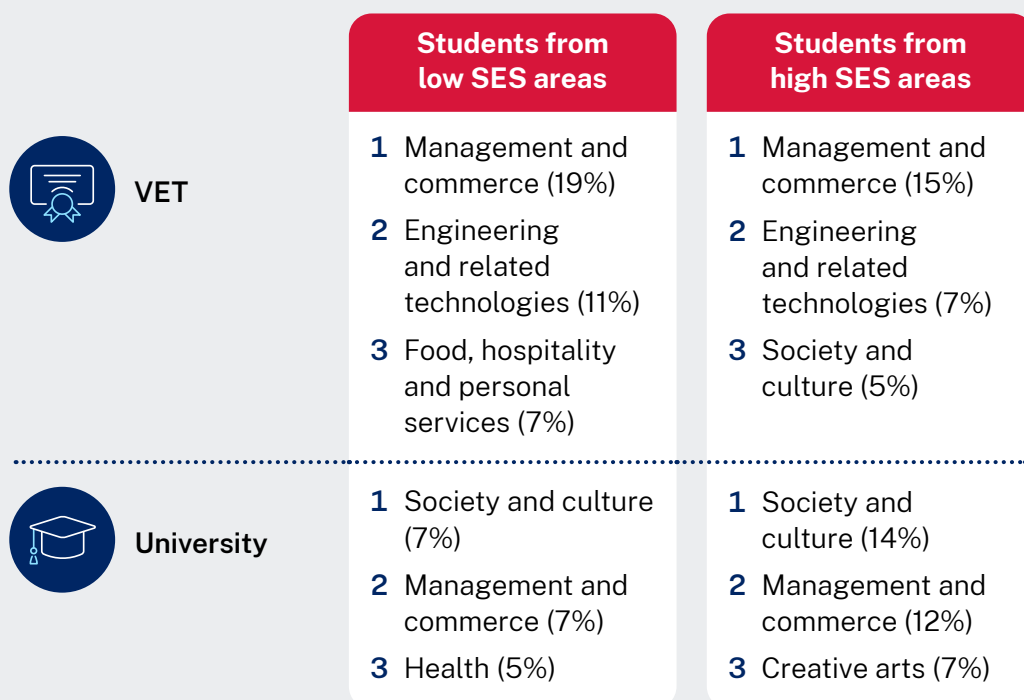
² Due to rounding, the sum of the categories may not add up to 100%.

Tertiary enrolments by age 24



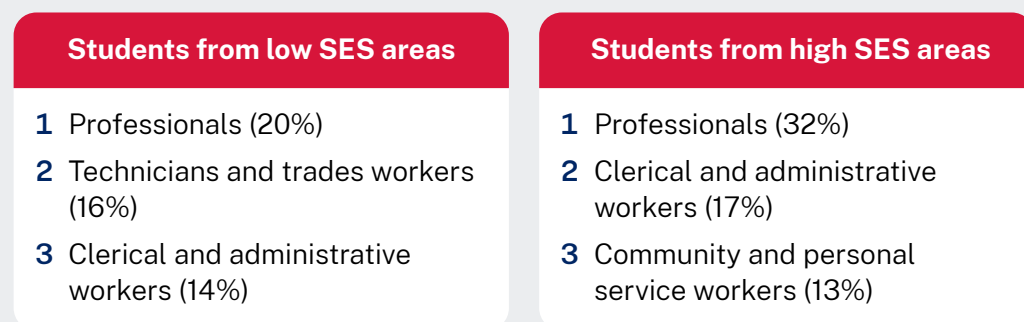
63% of students from low SES areas enrolled in tertiary VET, while **32%** enrolled in university

Top tertiary fields of study by age 24



VET study in **management and commerce** was the most common tertiary field of study for students from low SES areas

Top occupations at age 24³



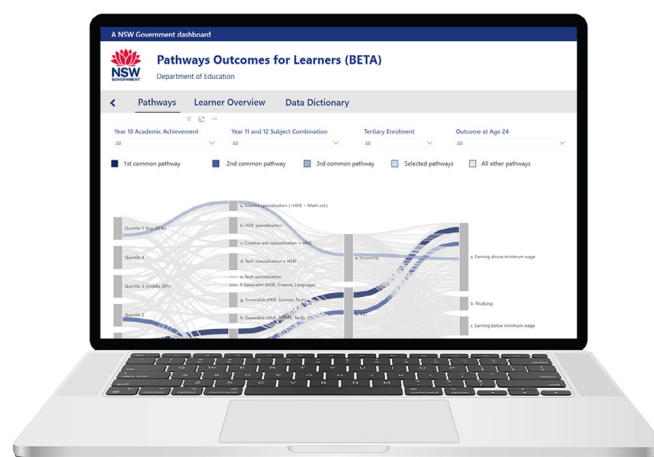
Professionals was the most common occupation for students from low SES areas

³ Percentages expressed as a proportion of students employed at age 24.

More information about Pathways Outcomes for Learners

Pathways Outcomes for Learners draws on [Pathways for the Future Program](#) pilot data which covers the background, education and employment data of 3.5 million young people aged 15 to 24 in NSW over the period 1996 to 2016.

The dashboard is a data visualisation tool and can offer high-level insights about pathways students take in senior secondary school through to tertiary study and into employment.



Data sources

The NSW Department of Education would like to acknowledge the assistance of the following organisations in the supply of data and preparation of this fact sheet:

- Australian Bureau of Statistics (ABS)
- Australian Government Department of Education
- Macquarie University Human Research Ethics Committee
- NSW Education Standards Authority (NESA)
- NSW Skills Board
- TAFE NSW
- The Centre for Health Record Linkage (CHeReL), NSW Ministry of Health.

A note about Multi-Agency Data Integration Project (MADIP) data:

The results of these studies are based, in part, on tax data supplied by the Australian Taxation Office (ATO) to the ABS under the

Taxation Administration Act 1953, which requires that such data is only used for the purpose of administering the *Census and Statistics Act 1905*. Any discussion of data limitations or weaknesses is in the context of using the data for statistical purposes, and is not related to the ability of the data to support the ATO's core operational requirements.

Legislative requirements to ensure privacy and secrecy of these data have been followed. For access to MADIP data under section 16A of the *Australian Bureau of Statistics Act 1975* or enabled by section 15 of the *Census and Statistics (Information Release and Access) Determination 2018*, source data are de-identified and so data about specific individuals has not been viewed in conducting this analysis. In accordance with the *Census and Statistics Act 1905*, results have been treated where necessary to ensure that they are not likely to enable identification of a particular person or organisation.

Centre for Education Statistics and Evaluation

GPO Box 33, Sydney NSW 2001, Australia

✉ info@cese.nsw.gov.au

🌐 education.nsw.gov.au/cese

🌐 yammer.com/det.nsw.edu.au

Licensed under the [Creative Commons Attribution 4.0 International License](#)

Please cite this publication as:

CESE (Centre for Education Statistics and Evaluation) (2023) '[Low socioeconomic status](#)', *Pathways Outcomes for Learners fact sheets*, NSW Department of Education.

