

# Schools and students: 2023 statistical bulletin

Centre for Education Statistics and Evaluation



# 2023 statistical bulletin summary

## NSW Government

### Full-time equivalent (FTE) enrolments

Primary enrolments	471,970
Secondary enrolments	307,679.4
SSP enrolments	6,198
<b>Total enrolments</b>	<b>785,847.4</b>

### Aboriginal and/or Torres Strait Islander students

Total Aboriginal and/or Torres Strait Islander enrolments	73,441.5
Percent Aboriginal and/or Torres Strait Islander enrolments	9.3%

### Part-time students

Number of part-time students	1,744
FTE enrolments	1,157.4

### Preschool students

Number of preschool students	4,245
FTE enrolments	2,283.3

### Students with language background other than English (LBOTE)

LBOTE enrolments	308,264
LBOTE enrolments as per cent of total enrolments	38.7%

### Attendance rate Semester 1 (including support)

Primary (Years 1–6)	90.5%
Secondary (Years 7–10)	84.0%
<b>Years 1–10</b>	<b>88.2%</b>

### Average primary class size

Kindergarten to Year 6	23.3
------------------------	------

### HSC Year 12

HSC awards	36,121
------------	--------

### NSW Government schools

Primary and infants schools	1,603
Central/community schools	66
Secondary schools	404
Schools for specific purposes (SSPs)	117
Environmental education centres (EECs)	22
<b>Total government schools</b>	<b>2,212</b>

Preschools attached to primary/infants schools	100
Separate preschools	1
<b>Total preschools</b>	<b>101</b>

## NSW non-government

### Full-time equivalent (FTE) enrolments

Primary enrolments	223,682.7
Secondary enrolments	238,925.8
<b>Total enrolments</b>	<b>462,608.5</b>

### NSW non-government schools

Primary schools	485
Secondary schools	140
Primary/secondary schools	278
Special schools	68
<b>Total non-government schools</b>	<b>971</b>

## Data sources

The 2023 statistical bulletin reports NSW Government schools data from:

- the census of students undertaken on Friday 4 August 2023
- the census of students of language background other than English (LBOTE), undertaken on Friday 10 March 2023
- the K–6 class size audit undertaken on Friday 24 March 2023
- the K–6 Community Languages Program (CLP) and Languages Programs: non-CLP Programs in Languages Other Than English (PLOTE) collections undertaken on Friday 15 May 2023

- the Years 7–9 language participation collection undertaken on Friday 15 May 2023
- the Semester 1 attendance collection undertaken in July 2023
- Enrolment Registration Number (ERN) extract for the Family Occupation and Education Index (FOEI) at the beginning of Term 2 2023.

The bulletin also includes non-government schools data which were collected by the Australian Government Department of Education on Friday 4 August 2023.

## Further reference

Additional information about schools and students in NSW is available from the Centre for Education Statistics and Evaluation's (CESE) other statistical publications.

Visit our website to download the publications: [education.nsw.gov.au/about-us/educational-data/cese/publications/statistics](https://education.nsw.gov.au/about-us/educational-data/cese/publications/statistics).

Additional information is also available from the NSW Education Data Hub: [data.cese.nsw.gov.au](https://data.cese.nsw.gov.au).

# Table of contents

## List of tables

### Schools

<b>Table 1</b> NSW Government schools by size, 2013–2023	5
<b>Table 2</b> NSW Government schools by type and SA4 groupings, mid-year 2023	7
<b>Table 3</b> NSW Government schools by FOEI bands and SA4 groupings, mid-year 2023	8
<b>Table 4</b> NSW Government schools by ABS remoteness and SA4 groupings, mid-year 2023	9
<b>Table 5</b> List of college arrangements, mid-year 2023	10
<b>Table 6</b> Secondary education schools by selective, specialist and coeducational status, mid-year 2023	11

### Classes

<b>Table 7</b> Average primary class sizes by year, 1997 and 2013–2023	12
---	----

### Students

<b>Table 8</b> Enrolments (FTE) in NSW Government schools, 1970, 1980, 1990, 1996–2023	13
<b>Table 9</b> Age-grade distribution of students in NSW Government schools, mid-year 2023, primary students by age and year of schooling (including students in mainstream support classes)	15
<b>Table 10</b> Age-grade distribution of students in NSW Government schools, mid-year 2023, secondary students by age and year of schooling (including students in mainstream support classes)	16
<b>Table 11</b> Age-grade distribution of students in NSW Government schools, mid-year 2023, part-time secondary students by age and year of schooling	18
<b>Table 12</b> Enrolments in support classes and schools for specific purposes (SSPs) by category, mid-year 2023	19
<b>Table 13</b> Age-grade distribution of students in NSW Government schools for specific purposes (SSPs), by age and category, mid-year 2023	21
<b>Table 14</b> Age distribution of students in NSW Government preschools and early intervention programs, mid-year 2023	22
<b>Table 15</b> Enrolments (FTE) in distance education by year of schooling, mid-year 2023	23
<b>Table 16</b> Enrolments (FTE) of Aboriginal and/or Torres Strait Islander students by SA4 groupings and grade group in NSW Government schools, mid-year 2023	24

<b>Table 17</b>	Enrolment of students of language background other than English (LBOTE) in NSW Government schools, March 2023 by SA4 groupings and grade groups	25
-----------------	---	----

<b>Table 18</b>	Enrolments (FTE) in NSW Government schools by FOEI quarters and SA4 groupings, April 2023	26
-----------------	---	----

## Study patterns

<b>Table 19</b>	Primary students in NSW Government schools studying a language other than English by year of schooling and language, May 2023	27
-----------------	---	----

<b>Table 20</b>	Language participation Year 7–9 by gender and year of schooling, May 2023	29
-----------------	---	----

<b>Table 21</b>	Board Developed Course enrolments in Year 10 subjects in NSW Government schools, 2023	32
-----------------	---	----

<b>Table 22</b>	Course enrolments in Year 11 and Year 12 subjects in NSW Government schools, 2023	38
-----------------	---	----

## Progress measures

<b>Table 23</b>	Apparent retention (%) in NSW Government schools, 2013–2023	44
-----------------	---	----

<b>Table 24</b>	NSW Government school HSC completions, 2018–2023	46
-----------------	--	----

<b>Table 25</b>	Semester 1 attendance rates (%) in NSW Government schools, Years 1–10 2023	47
-----------------	--	----

## List of figures

<b>Figure 1</b>	NSW Government schools, 2013–2023	6
-----------------	-----------------------------------	---

<b>Figure 2</b>	Primary and secondary enrolments (FTE) in NSW Government schools, 2013–2023	14
-----------------	---	----

<b>Figure 3</b>	Enrolments (FTE) in NSW Government schools by year of schooling and gender, mid-year 2023	17
-----------------	---	----

<b>Figure 4</b>	Enrolments (FTE) in NSW Government schools by age and gender, mid-year 2023	17
-----------------	---	----

<b>Figure 5</b>	Enrolments in support classes in mainstream schools and SSPs by category, mid-year 2023	20
-----------------	---	----

<b>Figure 6</b>	Apparent retention (%) in NSW Government schools, 2013–2023	45
-----------------	---	----

<b>Figure 7</b>	Semester 1 attendance rates (%) in NSW Government schools, Years 1–10, 2023	48
-----------------	---	----

## Schools

Table 1

### NSW Government schools by size, 2013–2023

Classification	2013	2014	2015	2016	2017	2018	2019	2020	2021	2022	2023
<b>Primary and infants schools</b>											
More than 700 enrolments	85	95	97	106	118	120	116	117	115	106	97
451 to 700 enrolments	263	260	263	269	267	273	281	286	273	271	266
301 to 450 enrolments	285	298	307	308	309	304	317	312	315	309	306
160 to 300 enrolments	378	361	350	335	334	336	324	322	332	352	363
26 to 159 enrolments	424	412	411	407	397	388	377	370	371	367	374
Less than 26 enrolments	182	191	178	183	182	183	190	200	199	196	197
<b>Total</b>	<b>1,617</b>	<b>1,617</b>	<b>1,606</b>	<b>1,608</b>	<b>1,606</b>	<b>1,604</b>	<b>1,605</b>	<b>1,607</b>	<b>1,605</b>	<b>1,601</b>	<b>1,603</b>
<b>Central and community schools</b>											
More than 900 enrolments	3	3	3	3	2	2	2	3	3	3	3
701 to 900 enrolments	1	1	2	2	3	3	3	2	2	2	2
451 to 700 enrolments	5	4	3	3	2	3	3	3	4	3	1
301 to 450 enrolments	6	8	7	8	8	7	9	8	5	6	7
160 to 300 enrolments	20	20	20	17	18	20	17	20	20	20	19
Less than 160 enrolments	32	31	31	33	32	31	34	32	34	33	34
<b>Total</b>	<b>67</b>	<b>67</b>	<b>66</b>	<b>66</b>	<b>66</b>	<b>66</b>	<b>68</b>	<b>68</b>	<b>68</b>	<b>67</b>	<b>66</b>
<b>Secondary schools</b>											
More than 900 enrolments	123	127	127	124	125	126	129	136	134	127	125
900 or less enrolments	274	270	272	275	274	273	268	263	265	272	276
Other	1	1	2	2	2	2	2	2	2	3	3
<b>Total</b>	<b>398</b>	<b>398</b>	<b>401</b>	<b>401</b>	<b>401</b>	<b>401</b>	<b>399</b>	<b>401</b>	<b>401</b>	<b>402</b>	<b>404</b>
<b>Other schools</b>											
Schools for specific purposes	113	114	113	112	113	113	115	116	117	117	117
Environmental education centres	23	23	23	23	23	23	23	23	23	22	22
<b>Total schools</b>	<b>2,218</b>	<b>2,219</b>	<b>2,209</b>	<b>2,210</b>	<b>2,209</b>	<b>2,207</b>	<b>2,210</b>	<b>2,215</b>	<b>2,214</b>	<b>2,209</b>	<b>2,212</b>

#### Notes:

- This table shows schools by size (number of students) rather than 'classification' as in previous publications, as school classification is no longer applicable.
- NSW School of Languages, Aurora College and Centre of Excellence in Agricultural Education are included in 'Other' category under Secondary schools. These schools do not have census enrolments.
- Refer to explanatory notes 1, 2 and 3.

**Figure 1**  
**NSW Government schools, 2013–2023**

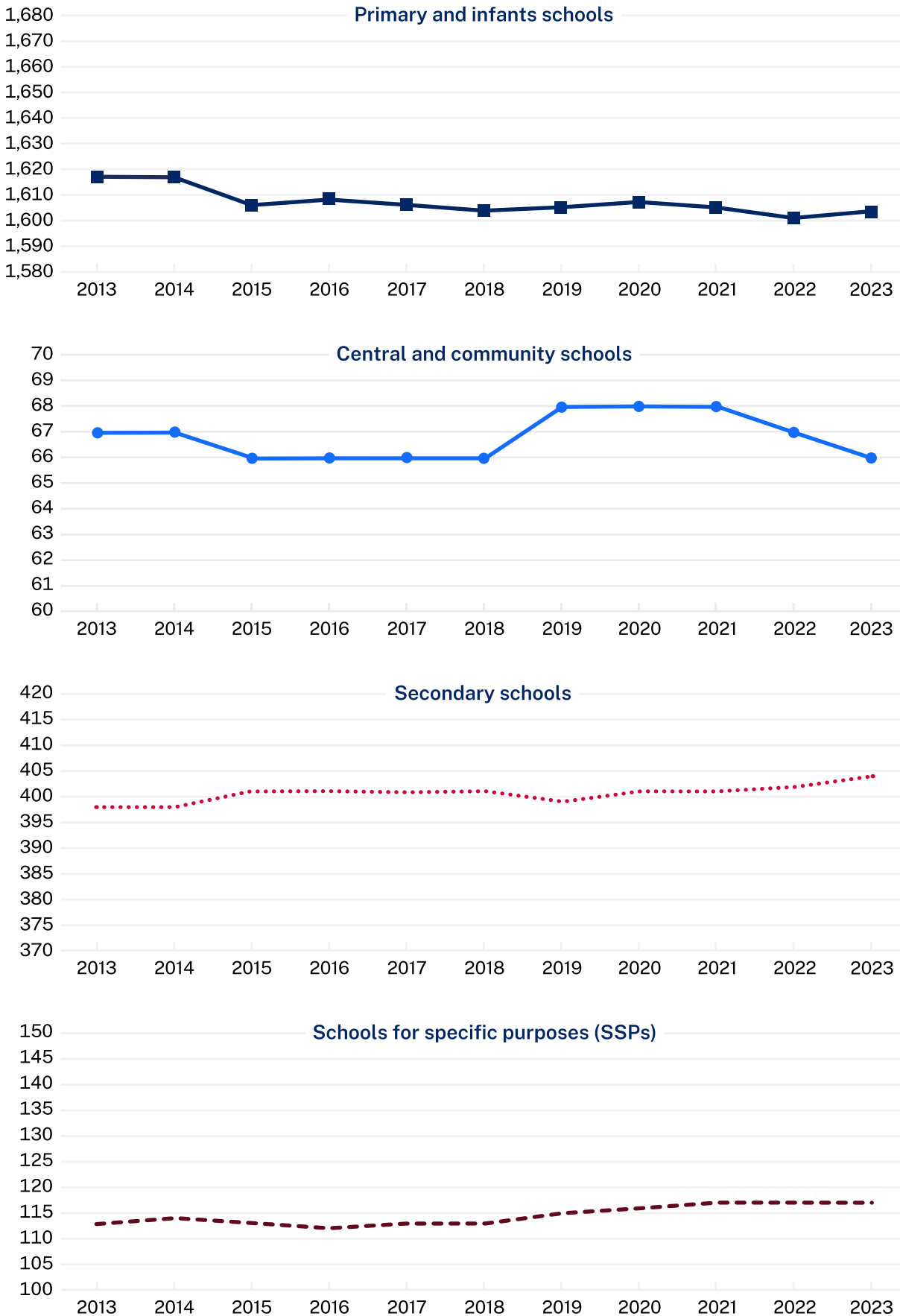


Table 2

## NSW Government schools by type and SA4 groupings, mid-year 2023

SA4 groupings	Primary/ infants	Central/ community	Secondary	SSPs*	EECs†	Total
Sydney-North	101	1	34	12	2	150
Sydney-Inner	90	1	29	10	1	131
Sydney-South	117	1	38	15	2	173
Sydney-South West	119		39	13	3	174
Sydney-West	117		36	17		170
Sydney-North West	112		29	5	3	149
<b>Sydney total</b>	<b>656</b>	<b>3</b>	<b>205</b>	<b>72</b>	<b>11</b>	<b>947</b>
North East NSW	208	8	38	4	2	260
North West NSW	214	28	43	8	3	296
South West NSW	198	22	40	11	2	273
South East NSW	184	3	42	9	2	240
Central Coast, Newcastle	143	2	36	13	2	196
<b>Regional total</b>	<b>947</b>	<b>63</b>	<b>199</b>	<b>45</b>	<b>11</b>	<b>1,265</b>
<b>NSW</b>	<b>1,603</b>	<b>66</b>	<b>404</b>	<b>117</b>	<b>22</b>	<b>2,212</b>

## Notes:

- Alexandria Park Community School, Batlow Technology School, Dubbo School of Distance Education, Evans River Community School, Hunter School of Performing Arts, Lucas Heights Community School and Wadalba Community School are included with central/community schools.
- Refer to explanatory notes 1, 2, 3 and 18.

\* Schools for specific purposes (SSPs)

† Environmental education centres (EECs)

**Table 3****NSW Government schools by FOEI bands and SA4 groupings, mid-year 2023**

SA4 groupings	Less than 50	50 to 90	90 to 110	110 to 150	150 or more	N/A*	Total	≥110 (%)
Sydney-North	126	15	3		2	4	150	1.3%
Sydney-Inner	87	29	8	3	2	2	131	3.8%
Sydney-South	39	68	23	32	9	2	173	23.7%
Sydney-South West	7	25	31	62	46	3	174	62.1%
Sydney-West	44	30	24	39	32	1	170	41.8%
Sydney-North West	30	45	21	42	7	4	149	32.9%
<b>Sydney total</b>	<b>333</b>	<b>212</b>	<b>110</b>	<b>178</b>	<b>98</b>	<b>16</b>	<b>947</b>	<b>29.1%</b>
North East NSW	6	59	45	108	40	2	260	56.9%
North West NSW		27	37	133	96	3	296	77.4%
South West NSW	2	26	44	141	58	2	273	72.9%
South East NSW	21	64	49	82	22	2	240	43.3%
Central Coast, Newcastle	25	50	32	74	13	2	196	44.4%
<b>Regional total</b>	<b>54</b>	<b>226</b>	<b>207</b>	<b>538</b>	<b>229</b>	<b>11</b>	<b>1,265</b>	<b>60.6%</b>
<b>NSW</b>	<b>387</b>	<b>438</b>	<b>317</b>	<b>716</b>	<b>327</b>	<b>27</b>	<b>2,212</b>	<b>47.2%</b>

**Notes:**

The list of schools with FOEI values and quarters:

- Includes:
  - all hospital schools (all assigned a notional FOEI of 100)
  - Stewart House School (assigned a notional FOEI of 150)
  - Royal Far West School (assigned a notional FOEI of 150)
- Excludes:
  - Palm Avenue School
  - NSW School of Languages
  - all Environmental Education Centres
  - Aurora College
- Refer to explanatory notes 15 and 18.

\* Not applicable (N/A)



**Table 4****NSW Government schools by ABS remoteness and SA4 groupings, mid-year 2023**

SA4 groupings	Major cities	Inner regional	Outer regional	Remote	Very remote	Total
Sydney-North	148	2				150
Sydney-Inner	131					131
Sydney-South	170	3				173
Sydney-South West	159	15				174
Sydney-West	170					170
Sydney-North West	122	26	1			149
<b>Sydney total</b>	<b>900</b>	<b>46</b>	<b>1</b>	<b>0</b>	<b>0</b>	<b>947</b>
North East NSW	16	223	20		1	260
North West NSW	39	93	124	26	14	296
South West NSW		140	124	9		273
South East NSW	96	107	37			240
Central Coast, Newcastle	190	6				196
<b>Regional total</b>	<b>341</b>	<b>569</b>	<b>305</b>	<b>35</b>	<b>15</b>	<b>1,265</b>
<b>NSW</b>	<b>1,241</b>	<b>615</b>	<b>306</b>	<b>35</b>	<b>15</b>	<b>2,212</b>

**Notes:**

- From 2016 onwards, instead of the Ministerial Council for Education, Early Childhood Development and Youth Affairs (MCEEDYA) remoteness categories, remoteness geographical data will be reported by the Australian Bureau of Statistics (ABS) remoteness structure. This is in line with national reporting.
- Refer to explanatory notes 2 and 18.

**Table 5**  
List of college arrangements, mid-year 2023

College	Senior campus	Other campuses
Brisbane Water Secondary College	Woy Woy Campus	Umina Campus
Callaghan College	Jesmond Senior Campus	Wallsend Campus Waratah Campus
Chifley College	Senior Campus	Bidwill Campus Dunheved Campus Mount Druitt Campus Shalvey Campus
Denison College of Secondary Education		Bathurst High Campus Kelso High Campus
Dubbo College	Senior Campus	Delroy Campus South Campus
Georges River College	Oatley Senior Campus	Hurstville Boys Campus Peakhurst Campus Penshurst Girls Campus
Great Lakes College	Senior Campus	Forster Campus Tuncurry Campus
Hastings Secondary College		Port Macquarie Campus Westport Campus
Moree Secondary College	Albert St Campus	Carol Ave Campus
Nirimba College	Wyndham College	Quakers Hill High School Riverstone High School Seven Hills High School
Northern Beaches Secondary College	Freshwater Senior Campus	Balgowlah Boys Campus Cromer Campus Mackellar Girls Campus Manly Campus
Sydney Secondary College	Blackwattle Bay Campus	Balmain Campus Leichhardt Campus
The Rivers Secondary College		Kadina High Campus Lismore High Campus Richmond River High Campus
Tuggerah Lakes Secondary College	The Entrance Campus	Berkeley Vale Campus Tumbi Umbi Campus

**Notes:**

- Denison College of Secondary Education, Hastings Secondary College and The Rivers Secondary College do not have senior campuses.
- Refer to explanatory note 14.

Table 6

## Secondary education schools by selective, specialist and coeducational status, mid-year 2023

Selective status	Specialty name	Coeducational	Boys	Girls	Total
Fully selective	Agricultural	3	1		4
	Comprehensive	9	4	4	17
Partially selective	Comprehensive	16	2	2	20
	Junior college	2			2
	Language	2			2
	Senior college	1			1
	Other	1			1
<b>Total selective</b>		<b>34</b>	<b>7</b>	<b>6</b>	<b>47</b>
Non-selective	Agricultural	1			1
	Comprehensive	331	11	15	357
	Creative arts	1			1
	Distance education	2			2
	Intensive English	1			1
	Junior college	14	1	1	16
	Language	3		1	4
	Marine technology	1			1
	Performing arts	8			8
	Rural technology	1			1
	Senior college	15			15
	Sports	7			7
	Technology	7	2	1	10
	Visual arts	1			1
<b>Total non-selective</b>		<b>393</b>	<b>14</b>	<b>18</b>	<b>425</b>
<b>Total secondary schools</b>		<b>427</b>	<b>21</b>	<b>24</b>	<b>472</b>

## Notes:

- Selective high schools provide a learning environment designed for academically gifted and high potential students.
- Includes secondary schools and central/community schools. The Conservatorium High School is included with performing arts schools.
- Intensive English only covers standalone Intensive English schools and does not include schools with an attached Intensive English Centre.
- Refer to explanatory notes 1 and 17.

## Classes

**Table 7**

Average primary class sizes by year, 1997 and 2013–2023

Year	1997	2013	2014	2015	2016	2017	2018	2019	2020	2021	2022	2023
Kindergarten	24.1	19.4	19.3	19.2	19.1	19.1	19.1	18.8	18.8	18.6	18.4	18.4
Year 1	25.5	21.3	21.4	21.3	21.3	21.3	21.4	21.1	21.0	20.9	20.7	20.6
Year 2	26.2	22.7	22.7	22.7	22.6	22.5	22.5	22.3	22.2	22.0	21.8	21.6
Year 3	26.6	25.6	25.6	25.9	25.9	25.7	25.8	25.7	25.4	25.1	24.9	24.8
Year 4	26.8	25.9	25.9	26.2	26.2	26.1	26.1	25.9	25.6	25.4	25.2	25.1
Year 5	26.8	26.3	26.2	26.5	26.3	26.4	26.4	26.1	25.9	25.6	25.5	25.4
Year 6	26.9	26.1	26.2	26.4	26.3	26.4	26.4	26.1	25.9	25.7	25.5	25.5
<b>Kindergarten – Year 6</b>	<b>26.9</b>	<b>24.0</b>	<b>24.0</b>	<b>24.1</b>	<b>24.1</b>	<b>24.1</b>	<b>24.1</b>	<b>23.9</b>	<b>23.8</b>	<b>23.6</b>	<b>23.4</b>	<b>23.3</b>

**Notes:**

- The average class size for each year level is calculated from regular and multi-age classes that contain a student from that year level. This can result in a lower K–6 average class size than any individual year level.
- Students attending schools for specific purposes (SSPs), students in mainstream support classes and distance education students are excluded from average class size calculations.
- From 2017, school size is based on primary enrolment rather than school classification.
- Refer to explanatory note 12.

## Students

**Table 8**

Enrolments (FTE) in NSW Government schools, 1970, 1980, 1990, 1996–2023

Year	Primary (K–6)	Secondary (7–12)	SSP	Total
1970	503,547	257,874		761,421
1980	515,769	283,352		799,121
1990	434,814	304,006	4,366	743,186
1996	450,465	306,823.3	3,749	761,037.3
1997	451,560	308,922.7	3,690	764,172.7
1998	452,568	309,133.7	3,673	765,374.7
1999	453,454	308,116.1	3,762	765,332.1
2000	454,363	303,681	3,792	761,836
2001	451,093	301,774.4	3,873	756,740.4
2002	447,897	302,988	3,915	754,800
2003	443,213	304,034	3,938	751,185
2004	438,677	302,849.6	3,981	745,507.6
2005	434,876	302,578.3	4,124	741,578.3
2006	432,660	303,622	4,133	740,415
2007	429,900	304,457.7	4,278	738,635.7
2008	428,331	303,055.7	4,392	735,778.7
2009	429,000	303,180.7	4,466	736,646.7
2010	430,177	307,291.2	4,673	742,141.2
2011	433,873	306,893.2	4,774	745,540.2
2012	438,681	304,632.1	4,921	748,234.1
2013	446,848	303,433.6	5,064	755,345.6
2014	456,151	302,339.7	5,207	763,697.7
2015	465,767	300,871.1	5,340	771,978.1
2016	475,073	300,069.9	5,457	780,599.9
2017	484,645	300,832.8	5,562	791,039.8
2018	491,043	301,315.2	5,664	798,022.2
2019	493,608	306,327.8	5,737	805,672.8
2020	492,280	312,016.8	5,780	810,076.8
2021	485,889	310,421.4	5,872	802,182.4
2022	476,861	307,958.7	6,029	790,848.7
<b>2023</b>	<b>471,970</b>	<b>307,679.4</b>	<b>6,198</b>	<b>785,847.4</b>

**Notes:**

- Since 1993 some students have enrolled part-time. All enrolments are reported in full-time equivalent (FTE) units and include full-time and part-time students.
- Refer to explanatory notes 1, 2, 3, 7 and 8.

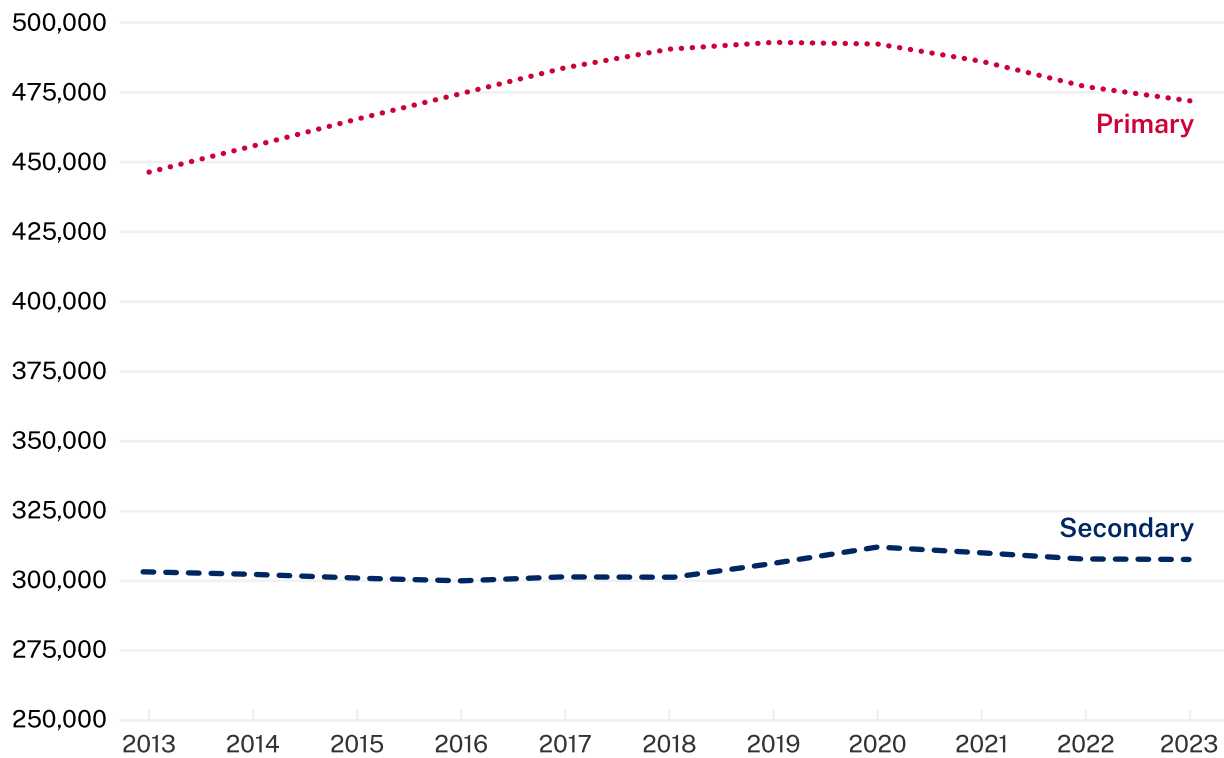
**Figure 2****Primary and secondary enrolments (FTE) in NSW Government schools, 2013–2023**

Table 9

Age-grade distribution of students in NSW Government schools, mid-year 2023, primary students by age and year of schooling (including students in mainstream support classes)

Age Yrs:mths	Kindergarten		Year 1		Year 2		Year 3		Year 4		Year 5		Year 6		Total		Primary total
	Boys	Girls	Boys	Girls	Boys	Girls	Boys	Girls	Boys	Girls	Boys	Girls	Boys	Girls	Boys	Girls	
Under 5	472	590													472	590	1,062
5-5:11	22,590	23,087	354	550											22,945	23,637	46,582
6-6:11	10,754	7,856	23,026	23,682	362*	545									34,141	32,083	66,224
7-7:11	26*	15	11,248	8,123	23,541	24,259	408	511							35,219	32,908	68,127
8-8:11			25	12	10,807	7,710	24,113	24,360	449	548					35,396	32,630	68,026
9-9:11					29*	23	10,711	7,555	24,420	24,800	402	538			35,564	32,917	68,481
10-10:11							41	15	10,586	7,413	24,808	25,209	477*	668*	35,912	33,304	69,216
11-11:11									32*	20*	10,496	7,266	24,529	24,997	35,056	32,282	67,338
12-12:11											40*	24*	9,859	6,900	9,899	6,924	16,823
13 and over													49	40	50	41	90
<b>Subtotal</b>	<b>33,842</b>	<b>31,548</b>	<b>34,653</b>	<b>32,367</b>	<b>34,739</b>	<b>32,537</b>	<b>35,273</b>	<b>32,441</b>	<b>35,487</b>	<b>32,781</b>	<b>35,746</b>	<b>33,037</b>	<b>34,914</b>	<b>32,605</b>	<b>244,654</b>	<b>227,316</b>	
<b>Total</b>	<b>65,390</b>		<b>67,020</b>		<b>67,276</b>		<b>67,714</b>		<b>68,268</b>		<b>68,783</b>		<b>67,519</b>		<b>471,970</b>		<b>471,970</b>

**Notes:**

- Students in distance education and opportunity classes (OC) are included with their appropriate grade levels.
- From 2020, students in mainstream support classes are included in their underlying grade of enrolment. Students in schools for specific purposes (SSPs) are not included.
- In most scholastic years there are a small number of students in atypical age groups. These have been included in the nearest band. This is indicated with an asterisk. For instance, of the 26 Kindergarten Boys in the 7-7:11 age bracket, up to 5 students are included from older age brackets. As a result, the sum of each row may not equal the totals reported.
- Refer to explanatory note 17.

Table 10

Age-grade distribution of students in NSW Government schools, mid-year 2023, secondary students by age and year of schooling (including students in mainstream support classes)

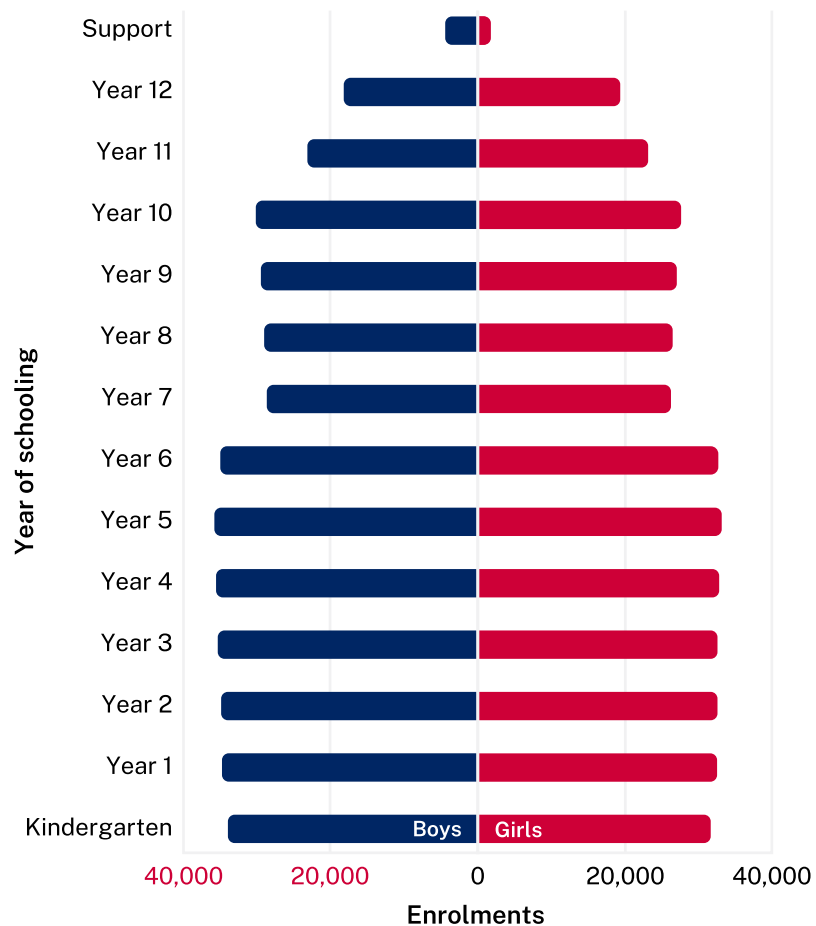
Age Yrs:mths	Year 7		Year 8		Year 9		Year 10		Year 11		Year 12		Total		Secondary total
	Boys	Girls	Boys	Girls	Boys	Girls	Boys	Girls	Boys	Girls	Boys	Girls	Boys	Girls	
Under 12	440	533											441	535	976
12-12:11	19,987	20,033	375*	597*									20,364	20,628	40,992
13-13:11	8,103	5,532	20,610	20,527	423*	570							29,138	26,629	55,767
14-14:11	50*	41*	7,846	5,240	21,077	20,914	439*	596					29,408	26,790	56,198
15-15:11			60*	42*	7,725	5,368	21,138	20,915	399*	571			29,320	26,896	56,216
16-16:11					148*	128*	8,234	5,651	16,979	18,059	305*	469*	25,609	24,241	49,850
17-17:11							209	211	5,599	4,384	13,404	15,159	19,216	19,760	38,976
18-18:11							28	39	153	160	4,435	3,689	4,633	3,897	8,530
19-19:11							24	33	18	25	125	117	181	183	364
20-20:11							14	22	8	10	17	22	48	65	113
21 and over							34	104	21	23	16	39	85	199	284
<b>Subtotal</b>	<b>28,580</b>	<b>26,139</b>	<b>28,891</b>	<b>26,406</b>	<b>29,373</b>	<b>26,980</b>	<b>30,120</b>	<b>27,571</b>	<b>23,177</b>	<b>23,232</b>	<b>18,302</b>	<b>19,495</b>	<b>158,443</b>	<b>149,823</b>	
<b>Total</b>	<b>54,719</b>		<b>55,297</b>		<b>56,353</b>		<b>57,691</b>		<b>46,409</b>		<b>37,797</b>		<b>308,266</b>		<b>308,266</b>

## Notes:

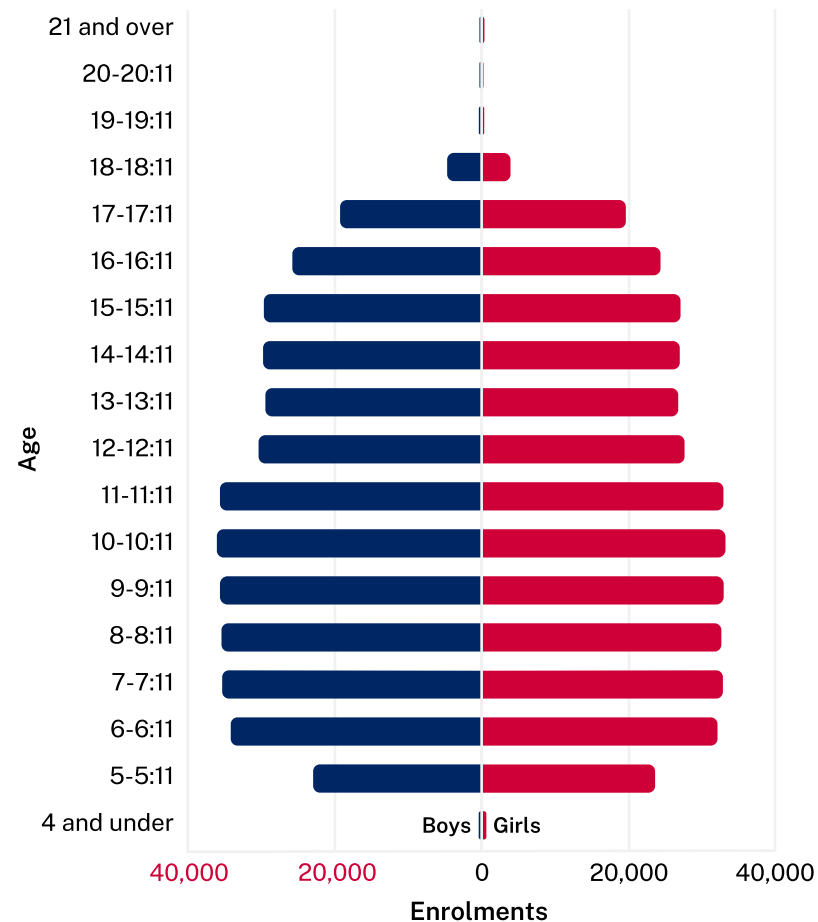
- Students in distance education and opportunity classes (OC) are included with their appropriate grade levels.
- From 2020, students in mainstream support classes are included in their underlying grade of enrolment. Students in schools for specific purposes (SSPs) are not included.
- In most scholastic years there are a small number of students in atypical age groups. These have been included in the nearest band. This is indicated with an asterisk (\*). For instance, of the 50 Year 7 Boys in the 14-14:11 age bracket, up to 5 students are included from older age brackets. As a result, the sum of each row may not equal the totals reported.
- Refer to explanatory note 17.



**Figure 3**  
Enrolments (FTE) in NSW Government schools by year of schooling and gender, mid-year 2023



**Figure 4**  
Enrolments (FTE) in NSW Government schools by age and gender, mid-year 2023



- Notes:**
- From 2020, 'Support' includes only students in schools for specific purposes (SSPs). Students in mainstream support classes are included in their underlying grade of enrolment.
  - Refer to explanatory note 17.

**Table 11**

Age-grade distribution of students in NSW Government schools, mid-year 2023, part-time secondary students by age and year of schooling

Age Years:months	Year 11		Year 12		Total		Total part-time
	Boys	Girls	Boys	Girls	Boys	Girls	
Under 16							
16-16:11	147	160*	6*	20	153*	180*	333*
17-17:11	52	54	356	495	408	549	957
18-18:11	6	7	164	211	170	218	388
19-19:11	1	4	16	25	17	29	46
20 and over			6	14	6	14	20
<b>Subtotal</b>	<b>206</b>	<b>225</b>	<b>548</b>	<b>765</b>	<b>754</b>	<b>990</b>	
<b>Total</b>	<b>431</b>		<b>1,313</b>		<b>1,744</b>		<b>1,744</b>

**Full-time equivalent**

<b>Subtotal</b>	<b>101.3</b>	<b>121.8</b>	<b>402.8</b>	<b>531.5</b>	<b>504.1</b>	<b>653.3</b>	<b>1,157.4</b>
<b>Total</b>	<b>223.1</b>		<b>934.3</b>		<b>1,157.4</b>		

**Notes:**

- In most scholastic years there are a small number of students in atypical age groups. These have been included in the nearest band. This is indicated with an asterisk (\*). For instance, of the 160 Year 11 Girls in the 16-16:11 age bracket, up to 5 students are included from younger age brackets. As a result, the sum of each row may not equal the totals reported.
- Refer to explanatory notes 7, 8 and 17.

Table 12

## Enrolments in support classes and schools for specific purposes (SSPs) by category, mid-year 2023

Category	Primary	Secondary	Schools for specific purposes (SSP)	Total
AU	2,269	2,063	106	4,438
BD	13	32	429	474
DB			≤ 5*	≤ 5*
ED	371	850	1,116	2,337
H	116	133		249
IE	75	2,307		2,382
IM	1,317	3,203		4,520
IO	464	539		1,003
IO/AU	1,110	382	235	1,727
IO/IS	412	398	3,131	3,941
IS	25		99	124
JJ			177	177
MC	4,601	3,484	850	8,935
P	41	48	7	96
TUT	10	109	30	149
V			11-20*	11-20*
<b>Total</b>	<b>10,824</b>	<b>13,548</b>	<b>6,198</b>	<b>30,570</b>

## Key:

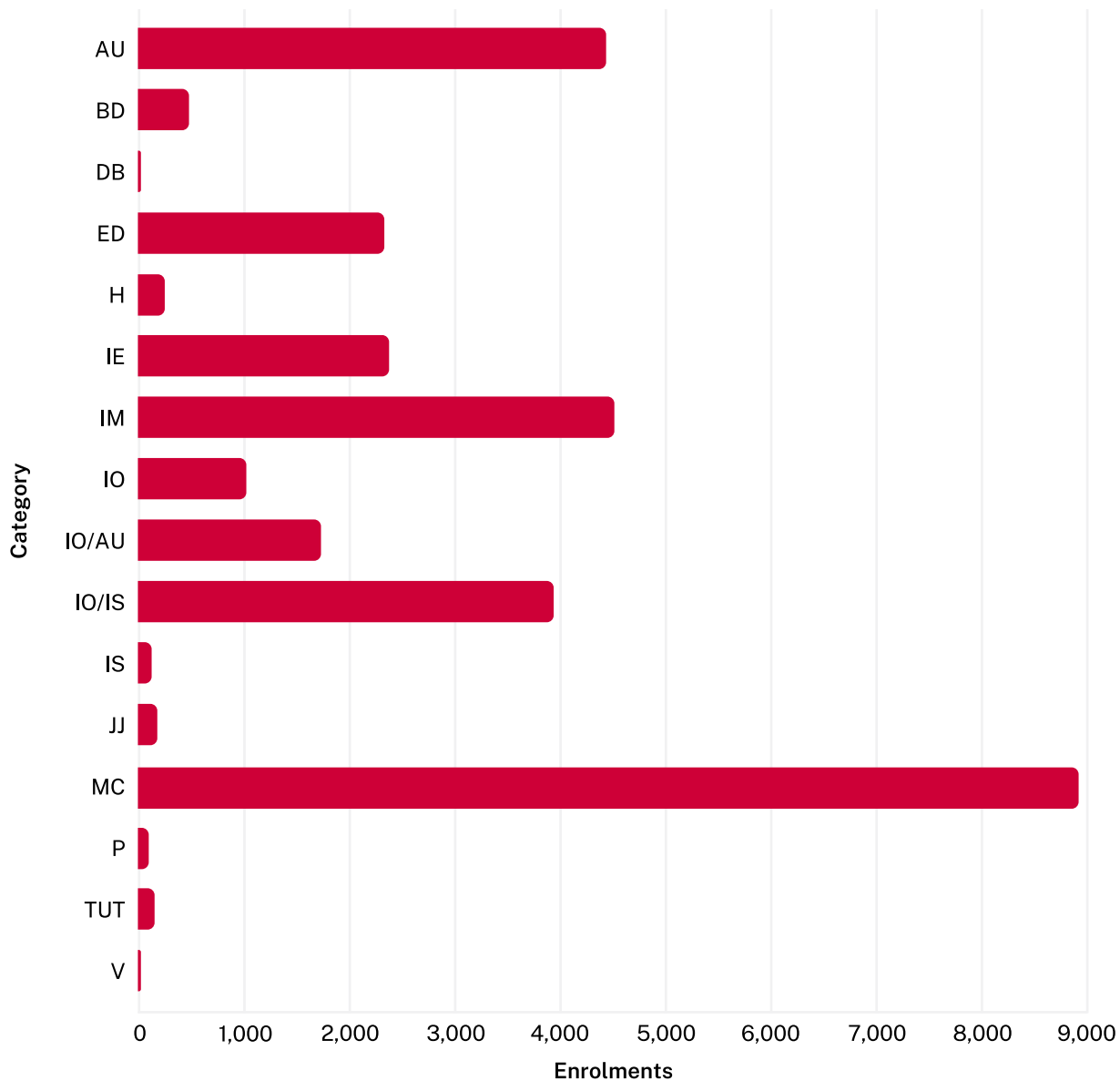
AU	Autism	IO/AU	Both autism and moderate intellectual disability
BD	Behaviour disorder	IO/IS	Moderate or severe intellectual disability
DB	Visual and hearing disability	IS	Severe intellectual disability
ED	Emotional disturbance	JJ	Juvenile Justice
H	Hearing disability	MC	Multicategorical
IE	Intensive English	P	Physical disability
IM	Mild intellectual disability	TUT	Tutorial
IO	Moderate intellectual disability	V	Visual disability

## Notes:

- Students in SSPs, except those in juvenile justice schools, are reported by the type of support class they are enrolled in, not by the type of SSP.
- From 2020, students in mainstream support classes are reported by their underlying grade of enrolment.
- Data has been confidentialised where necessary to suppress enrolments of 5 or fewer students, indicated by an asterisk (\*).
- Refer to explanatory notes 3 and 5.

Figure 5

Enrolments in support classes in mainstream schools and SSPs by category, mid-year 2023



## Key:

AU	Autism	IO/AU	Both autism and moderate intellectual disability
BD	Behaviour disorder	IO/IS	Moderate or severe intellectual disability
DB	Visual and hearing disability	IS	Severe intellectual disability
ED	Emotional disturbance	JJ	Juvenile Justice
H	Hearing disability	MC	Multicategorical
IE	Intensive English	P	Physical disability
IM	Mild intellectual disability	TUT	Tutorial
IO	Moderate intellectual disability	V	Visual disability

Table 13

Age-grade distribution of students in NSW Government schools for specific purposes (SSPs), by age and category, mid-year 2023

Age Years:months	AU	BD	ED	IO/AU	IO/IS	IS	JJ	MC	Total		All
									Boys	Girls	
Under 5				≤5*	6-10*			≤5*	13	5	18
5-5:11	7		6-10*	8	113	6		29	126	45	171
6-6:11	8		18	15	219	7		60	244	84	328
7-7:11	10		23	16	247	9		60	276	89	365
8-8:11	10		34	11	222	7		49	260	74	334
9-9:11	7		35	16	291	6		53	297	114	411
10-10:11	15	9	59	16	249	9		62	316	103	419
11-11:11	12	25	79	29	229	6		56	324	115	439
12-12:11	7	31	71	21	233	10	≤5*	71	338	116	454
13-13:11	7	88	108	22	259	11	≤5*	87	449	147	596
14-14:11	9	103	173	22	272	≤5*	17	80	464	226	690
15-15:11	7	99	174	19	256	≤5*	35	85	454	233	687
16-16:11	≤5*	52	173	23	251	7	44	82	434	209	643
17-17:11	≤5*	18	115	11	199	8	45	45	318	126	444
18-18:11	≤5*	≤5*	38	≤5*	80	≤5*	16	25	122	51	173
19 and over		≤5*	6-10*		≤5*		15	≤5*	18	8	26
<b>Subtotal</b>									<b>4,453</b>	<b>1,745</b>	
<b>Total</b>	<b>106</b>	<b>429</b>	<b>1,116</b>	<b>235</b>	<b>3,131</b>	<b>99</b>	<b>177</b>	<b>850</b>	<b>6,198</b>		<b>6,198</b>

**Key:**

<b>A</b>	Autism	<b>IO/IS</b>	Moderate or severe intellectual disability
<b>BD</b>	Behaviour disorder	<b>IS</b>	Severe intellectual disability
<b>ED</b>	Emotional disturbance	<b>JJ</b>	Juvenile Justice
<b>IO/AU</b>	Both autism and moderate intellectual disability	<b>MC</b>	Multicategorical

**Notes:**

- Students in SSPs, except those in juvenile justice schools, are reported by the type of support class they are enrolled in, not by the type of SSP.
- The total figures includes additional support class types (physical disability, tutorial class, visual disability, both visual and hearing disability). These figures have not been provided separately in the table due to suppression rules.
- Data has been confidentialised where necessary to suppress enrolments of 5 or fewer students, indicated by an asterisk (\*).
- Refer to explanatory note 3.

**Table 14**

Age distribution of students in NSW Government preschools and early intervention programs, mid-year 2023

**Preschools**

Age Years:months	All students	Aboriginal and/or Torres Strait Islander students
3 and under	143	47
4-4:11	3,105	452
5-5:11	994	196
6 and over	3	
<b>Total</b>	<b>4,245</b>	<b>695</b>

**Early intervention**

Age Years:months	All students	Aboriginal and/or Torres Strait Islander students
3 and under	28	
4-4:11	341	71*
5-5:11	355	57
6 and over	3	
<b>Total</b>	<b>727</b>	<b>128</b>

**Notes:**

- Figures reported above are children enrolled in a preschool or an Early Intervention program that is run by a NSW Government school. These government preschool classes provide full-time or part-time schooling at pre-primary level.
- In NSW, most children receiving a preschool education are enrolled at a government funded community preschool or in a long day care centre which offers a preschool program.
- The number of Aboriginal and/or Torres Strait Islander students aged 3 and under is less than 10. For privacy reasons, this number has been included in the total for 4-4:11.
- Refer to explanatory note 9.

**Table 15****Enrolments (FTE) in distance education by year of schooling, mid-year 2023**

<b>Primary</b>	<b>Boys</b>	<b>Girls</b>	<b>Total</b>
Kindergarten	42	31	73
Year 1	64	69	133
Year 2	56	61	117
Year 3	50	65	115
Year 4	62	43	105
Year 5	63	53	116
Year 6	56	42	98
Primary support	1		1
<b>Total</b>	<b>394</b>	<b>364</b>	<b>758</b>

<b>Secondary</b>	<b>Boys</b>	<b>Girls</b>	<b>Total</b>
Year 7	41	35	76
Year 8	71	93	164
Year 9	157	152	309
Year 10	211	240	451
Year 11	105.5	168.5	274.0
Year 12	55.6	113.2	168.8
Secondary support	19	13	32
<b>Total</b>	<b>660.1</b>	<b>814.7</b>	<b>1,474.8</b>

<b>Total all students</b>	<b>1,054.1</b>	<b>1,178.7</b>	<b>2,232.8</b>
---------------------------	----------------	----------------	----------------

**Notes:**

- All enrolments are reported in full-time equivalent units (FTE), and include full-time and part-time students whose main school is the distance education centre.
- Refer to explanatory notes 6 and 17.

Table 16

**Enrolments (FTE) of Aboriginal and/or Torres Strait Islander students by SA4 groupings and grade group in NSW Government schools, mid-year 2023**

Statistical area level 4 group	K-2	Y3-6	Primary total	Y7-10	Y11-12	Secondary total	SA4 groups total	% Aboriginal
Sydney-North	143	199	342	192	56.4	248.4	612.4	0.7%
Sydney-Inner	404	611	1,015	524	150.0	674.0	1,756.0	3.2%
Sydney-South	373	499	872	443	133.4	576.4	1,484.4	2.0%
Sydney-South West	1,379	1,812	3,191	1,529	380.0	1,909.0	5,235.0	5.7%
Sydney-West	1,247	1,516	2,763	1,076	335.2	1,411.2	4,333.2	4.6%
Sydney-North West	1,154	1,545	2,699	1,298	282.7	1,580.7	4,350.7	6.5%
<b>Sydney total</b>	<b>4,700</b>	<b>6,182</b>	<b>10,882</b>	<b>5,062</b>	<b>1,337.7</b>	<b>6,399.7</b>	<b>17,771.7</b>	<b>3.8%</b>
North East NSW	2,482	3,532	6,014	3,465	862.8	4,327.8	10,394.8	18.4%
North West NSW	4,857	6,390	11,247	5,834	1,340.6	7,174.6	18,545.6	29.3%
South West NSW	2,495	3,124	5,619	2,880	569.6	3,449.6	9,220.6	18.5%
South East NSW	2,088	2,782	4,870	2,461	519.6	2,980.6	7,953.6	11.5%
Central Coast, Newcastle	2,489	3,305	5,794	2,934	694.2	3,628.2	9,555.2	12.5%
<b>Regional total</b>	<b>14,411</b>	<b>19,133</b>	<b>33,544</b>	<b>17,574</b>	<b>3,986.8</b>	<b>21,560.8</b>	<b>55,669.8</b>	<b>17.7%</b>
<b>NSW</b>	<b>19,111</b>	<b>25,315</b>	<b>44,426</b>	<b>22,636</b>	<b>5,324.5</b>	<b>27,960.5</b>	<b>73,441.5</b>	<b>9.3%</b>
Aboriginal students total as a percentage of total NSW enrolments	9.6%	9.3%	9.4%	10.1%	6.4%	9.1%	9.3%	

**Notes:**

- Students in distance education and opportunity classes (OC) are included with their appropriate grade levels.
- Aggregate geographical data are reported by groupings of ABS statistical area 4 (refer to the [maps](#)).
- From 2020, students in mainstream support classes are reported by their underlying grade of enrolment.
- There were 1,055 Aboriginal and/or Torres Strait Islander students enrolled in SSPs, representing 17.0% of total SSP enrolments. Aboriginal and/or Torres Strait Islander students in SSPs are not included in the grade group data but are included in the SA4 groups total column.
- Refer to explanatory notes 2, 9 and 18.



Table 17

Enrolment of students of language background other than English (LBOTE) in NSW Government schools, March 2023 by SA4 groupings and grade groups

SA4 groupings	K-2	3-6	Primary total	7-10	11-12	Secondary total	SA4 groups total	% LBOTE
Sydney-North	11,235	16,030	27,265	11,437	4,886	16,323	43,771	50.1%
Sydney-Inner	6,926	9,315	16,241	9,251	4,223	13,474	29,908	53.6%
Sydney-South	10,933	15,609	26,542	12,808	5,669	18,477	45,464	60.9%
Sydney-South West	12,906	19,914	32,820	17,570	7,874	25,444	58,692	64.0%
Sydney-West	19,012	26,356	45,368	16,960	6,749	23,709	69,595	73.2%
Sydney-North West	6,449	9,687	16,136	6,867	3,361	10,228	26,506	39.4%
<b>Sydney total</b>	<b>67,461</b>	<b>96,911</b>	<b>164,372</b>	<b>74,893</b>	<b>32,762</b>	<b>107,655</b>	<b>273,936</b>	<b>58.1%</b>
North East NSW	1,315	1,804	3,119	1,313	543	1,856	4,982	8.6%
North West NSW	1,062	1,458	2,520	1,106	457	1,563	4,102	6.3%
South West NSW	1,177	1,596	2,773	1,122	503	1,625	4,459	8.8%
South East NSW	2,351	3,240	5,591	2,608	1,103	3,711	9,366	13.3%
Central Coast, Newcastle	2,179	3,157	5,336	2,903	1,126	4,029	9,424	12.1%
<b>Regional total</b>	<b>8,084</b>	<b>11,255</b>	<b>19,339</b>	<b>9,052</b>	<b>3,732</b>	<b>12,784</b>	<b>32,333</b>	<b>10.1%</b>
<b>NSW</b>	<b>75,545</b>	<b>108,166</b>	<b>183,711</b>	<b>83,945</b>	<b>36,494</b>	<b>120,439</b>	<b>306,269</b>	<b>38.6%</b>

**Notes:**

- LBOTE enrolments for 2023 are compared to enrolments (headcount) in March 2023.
- There were 2,119 LBOTE students enrolled in SSPs, representing 41.7% of total SSP enrolments. This figure is not displayed separately for each SA4 grouping but is included in the SA4 groups total column.
- Primary support students are included in Year 3 to 6. Secondary support students are included in Year 7 to 10.
- For more detailed analysis of students of language background other than English, please refer to CESE fact sheet [Schools: language diversity in NSW](#).
- Refer to explanatory notes 11 and 18.

**Table 18****Enrolments (FTE) in NSW Government schools by FOEI quarters and SA4 groupings, April 2023**

SA4 groupings	Quarter 1	Quarter 2	Quarter 3	Quarter 4	Total	Quarter 1 (%)
Sydney-North	2,854	9,299	26,685	48,862	87,700	3.3%
Sydney-Inner	4,700	7,939	16,297	27,573	56,509	8.3%
Sydney-South	15,256	19,130	22,519	18,040	74,945	20.4%
Sydney-South West	34,178	27,942	19,895	10,669	92,684	36.9%
Sydney-West	24,808	20,504	26,027	25,185	96,524	25.7%
Sydney-North West	12,286	16,104	18,574	20,580	67,544	18.2%
<b>Sydney total</b>	<b>94,082</b>	<b>100,918</b>	<b>129,997</b>	<b>150,909</b>	<b>475,906</b>	<b>19.8%</b>
North East NSW	19,718	18,156	12,467	7,589	57,930	34.0%
North West NSW	28,756	20,017	10,742	5,452	64,967	44.3%
South West NSW	19,605	16,105	9,728	5,224	50,662	38.7%
South East NSW	19,291	21,169	17,027	12,954	70,441	27.4%
Central Coast, Newcastle	19,903	22,280	19,524	16,481	78,188	25.5%
<b>Regional total</b>	<b>107,273</b>	<b>97,727</b>	<b>69,488</b>	<b>47,700</b>	<b>322,188</b>	<b>33.3%</b>
<b>NSW</b>	<b>201,355</b>	<b>198,645</b>	<b>199,485</b>	<b>198,609</b>	<b>798,094</b>	<b>25.2%</b>

**Notes:**

- Enrolments are from system extracts at beginning of Term 2 and are not mid-year census enrolments which are extracted in August.
- Refer to explanatory notes 15 and 18.

## Study patterns

**Table 19**

**Primary students in NSW Government schools studying a language other than English by year of schooling and language, May 2023**

Language name	Kinder	Year 1	Year 2	Year 3	Year 4	Year 5	Year 6	Total
Chinese (Mandarin)	1,759	2,359	2,376	2,580	2,365	2,150	2,064	15,653
Arabic	1,339	1,184	1,165	1,098	1,071	985	926	7,768
Italian	767	1,047	1,048	1,323	1,090	1,027	783	7,085
Vietnamese	431	550	609	636	613	720	698	4,257
Greek	481	465	433	379	353	421	374	2,906
Wiradjuri	371	408	390	328	340	382	353	2,572
Korean	484	375	357	349	344	252	249	2,410
French	304	306	319	273	363	439	348	2,352
Japanese	282	303	240	261	240	174	294	1,794
Bundjalung	217	213	243	240	261	289	284	1,747
Gumbaynggirr	248	232	271	252	249	246	243	1,741
Dharug / Darug	194	228	195	328	315	199	176	1,635
Dharawal / Tharawal	355	327	334	140	101	26	18	1,301
Hindi	127	220	206	193	195	171	104	1,216
Indonesian	65	71	68	256	194	212	192	1,058
Spanish	152	122	111	126	128	132	170	941
Assyrian	50	78	56	121	108	110	199	722
Gathang / Kattang	99	98	86	91	93	102	92	661
Dhanggatti / Dunghutti / Dainggatti / Thunghutti	111	107	127	60	58	59	66	588
Tamil	64	76	87	63	59	78	82	509
Gamilaraay / Gamilaroi / Kamilaroi / Gomerioi	43	168	94	90	34	39	39	507
Dhurga	49	34	56	87	77	105	86	494
Bengali	48	121	70	56	78	57	52	482
Khmer	36	54	53	43	67	86	76	415
Punjabi	54	59	42	47	54	56	48	360
Hebrew	70	73	49	32	42	32	40	338
Urdu	50	64	50	41	50	39	37	331
Awabakal	47	37	35	42	48	54	58	321
Macedonian	35	42	36	53	44	49	51	310

**Table 19**

**Primary students in NSW Government schools studying a language other than English by year of schooling and language, May 2023 (continued)**

Language name	Kinder	Year 1	Year 2	Year 3	Year 4	Year 5	Year 6	Total
Dari	41	47	24	39	38	29	24	242
Turkish	73	24	24	21	30	24	25	221
Ngemba / Ngiyampaa	27	24	36	26	33	33	35	214
Auslan	30	10	17	19	21	49	67	213
Telugu	31	21	35	32	33	29	26	207
Gujarati	20	22	29	28	21	30	30	180
Nepali	29	27	22	21	29	21	25	174
Paakantji / Barkindji	7	16	15	37	38	17	18	148
Anaiwan / Anewan	28	21	11	7	4	26	20	117
Serbian		23	10	21	25	15	23	117
Djirringanj	17	15	20	16	15	12	13	108
Chinese (Cantonese)	21	12	12	16	12	13	8	94
Greek (Modern)	9	12	5	14	26	14	12	92
Russian	18	10	7	12	8	8	6	69
Wahlubal	9	9	7	8	6	14	10	63
Yaygirr / Yagir / Yaegl	6	9	7	5	9	1	8	45
Maori (New Zealand)				8	9	7	9	33
Samoan		3	6	3	4	3	11	30
Yuwaalaraay / Yuwaalayaay	4	3	3	1	3	3	1	18
Muruwari / Murrawarri	1	1		1	2	2	2	9
Farsi	1			3		2		6
<b>NSW total</b>	<b>8,704</b>	<b>9,730</b>	<b>9,496</b>	<b>9,926</b>	<b>9,400</b>	<b>9,043</b>	<b>8,575</b>	<b>64,874</b>

**Notes:**

- The table includes data from the K–6 Community Languages Program (CLP) and the K–6 Languages Programs: non-CLP Programs in Languages Other Than English (PLOTE) collections.
- Students may study more than one language.
- Students in distance education and opportunity classes (OC) are included with their appropriate grade levels.
- From 2021, students in support classes who studied a language other than English are recorded against the grade of the student group they learn with.

**Table 20**  
**Language participation Year 7–9 by gender and year of schooling, May 2023**

Language name	Year 7			Year 8			Year 9			All students		
	Boys	Girls	Total	Boys	Girls	Total	Boys	Girls	Total	Boys	Girls	Total
Japanese	5,605	4,892	10,497	6,526	5,450	11,976	1,348	1,547	2,895	13,479	11,889	25,368
French	2,778	2,566	5,344	3,133	3,352	6,485	354	711	1,065	6,265	6,629	12,894
Chinese (Mandarin)	1,406	1,111	2,517	1,165	968	2,133	171	214	385	2,742	2,293	5,035
Italian	1,313	1,279	2,592	998	1,012	2,010	76	107	183	2,387	2,398	4,785
Spanish	923	949	1,872	993	1,116	2,109	99	182	281	2,015	2,247	4,262
German	540	540	1,080	375	490	865	117	87	204	1,032	1,117	2,149
Indonesian	487	489	976	329	292	621	12	29	41	828	810	1,638
Korean	185	133	318	367	548	915	18	71	89	570	752	1,322
Greek (Modern)	116	131	247	262	126	388	20	24	44	398	281	679
Latin	92	60	152	184	178	362	49	90	139	325	328	653
Gamilaraay / Gamilaroi / Kamilaroi / Gomeroi	235	231	466	20	20	40	10	9	19	265	260	525
Wiradjuri	171	180	351	69	63	132	1		1	241	243	484
Gumbaynggirr	101	102	203	101	81	182				202	183	385
Arabic	7	10	17	146	97	243	32	38	70	185	145	330
Auslan	43	60	103	81	93	174	4	3	7	128	156	284
Chinese (Cantonese)	75	66	141	37	30	67	31	40	71	143	136	279
Dhurga	105	83	188	37	40	77	2	10	12	144	133	277
Gathang / Kattang	68	75	143	42	54	96	12	10	22	122	139	261
Vietnamese	40	23	63	37	34	71	18	16	34	95	73	168
Hindi	70	65	135		2	2	5	3	8	75	70	145

Table 20

Language participation Year 7–9 by gender and year of schooling, May 2023 (continued)

Language name	Year 7			Year 8			Year 9			All students		
	Boys	Girls	Total	Boys	Girls	Total	Boys	Girls	Total	Boys	Girls	Total
Dharug / Darug	58	41	99	15	15	30				73	56	129
Awabakal				59	54	113				59	54	113
Wamba Wamba	55	38	93							55	38	93
Bundjalung	37	45	82	3	2	5				40	47	87
Paakantji / Barkindji	20	20	40	15	18	33	2	3	5	37	41	78
Ngemba / Ngiyampaa	17	20	37	15	15	30				32	35	67
Punjabi	13	9	22	6	10	16	12	16	28	31	35	66
Macedonian	6	10	16	9	12	21	8	13	21	23	35	58
Serbian	3	12	15	15	7	22	9	9	18	27	28	55
Turkish	5	1	6	9	5	14	8	14	22	22	20	42
Yuwaalaraay / Yuwaalayaay	2	1	3	12	22	34	1	2	3	15	25	40
Polish	6	4	10	7	3	10	6	10	16	19	17	36
Sign languages	11	7	18							11	7	18
Hebrew	7	1	8	4	5	9				11	6	17
Wailwan	1	9	10	4	2	6				5	11	16
Armenian		1	1	2	1	3	2	4	6	4	6	10
Russian							5	4	9	5	4	9
Greek (classical)				6		6				6		6
Croatian					1	1	1	3	4	1	4	5
Bosnian		1	1		1	1	1	2	3	1	4	5

Table 20

Language participation Year 7–9 by gender and year of schooling, May 2023 (continued)

Language name	Year 7			Year 8			Year 9			All students		
	Boys	Girls	Total	Boys	Girls	Total	Boys	Girls	Total	Boys	Girls	Total
Khmer				1		1	2	1	3	3	1	4
Portuguese	1		1	1		1	1		1	3		3
Spanish single course					1	1		1	1		2	2
Japanese single course								1	1		1	1
<b>Total</b>	<b>14,602</b>	<b>13,265</b>	<b>27,867</b>	<b>15,085</b>	<b>14,220</b>	<b>29,305</b>	<b>2,437</b>	<b>3,274</b>	<b>5,711</b>	<b>32,124</b>	<b>30,759</b>	<b>62,883</b>

**Notes:**

- The table includes students studying a language through the Secondary College of Languages (formerly Saturday School of Community Languages).
- The table includes only students learning a language on average for one hour or more per week for 35 or more weeks a year.
- There were an additional 17,247 students who were learning a language for a shorter duration.
- Refer to explanatory note 17.

Table 21

## Board Developed Course enrolments in Year 10 subjects in NSW Government schools, 2023

Course ID	Course name	Hours	Boys	Girls	Total
300	English	200	27,279	25,594	52,906
302	English (Life Skills)		1,686	719	2,406
323	Mathematics	200	27,307	25,585	52,925
325	Mathematics (Life Skills)		1,674	722	2,397
350	Science	200	27,293	25,624	52,950
352	Science (Life Skills)		1,674	721	2,396
410	Aboriginal Studies	200	139	197	336
411	Aboriginal Studies	100	96	106	202
414	Aboriginal Studies Life Skills	100	10	5	15
415	Aboriginal Studies Life Skills	200	9	2	11
430	Commerce	200	5,850	5,421	11,273
431	Commerce	100	1,535	1,352	2,889
433	Commerce Life Skills	100	16	2	18
434	Commerce Life Skills	200	19	9	28
440	Geography	200	191	139	330
441	Geography	100	192	124	316
450	History	200	1,466	1,505	2,971
451	History	100	960	833	1,793
453	History Elective Life Skills	100	9	1	10
454	History Elective Life Skills	200	16	4	20
500	Work Education	200	306	307	613
501	Work Education	100	452	337	789
503	Work Education Life Skills	100	149	52	201
504	Work Education Life Skills	200	230	104	334
792	Aboriginal Languages (Life Skills)		5	2	7
793	Aboriginal Languages (Life Skills)	100		1	1
800	Arabic	200	11	31	42
801	Arabic	100	2	11	13
810	Chinese	200	142	178	321
811	Chinese	100	38	92	130
813	Chinese Life Skills	200	1		1
814	Chinese Life Skills	100	2		2



Table 21

Board Developed Course enrolments in Year 10 subjects in NSW Government schools, 2023 (continued)

Course ID	Course name	Hours	Boys	Girls	Total
820	Classical Greek	200	2		2
870	French	200	197	488	685
871	French	100	21	124	145
873	French Life Skills	200	2		2
874	French Life Skills	100	6	1	7
880	German	200	91	55	146
881	German	100	20	23	43
890	Hebrew	200	1		1
891	Hebrew	100		1	1
910	Indonesian	200	28	27	55
911	Indonesian	100	1		1
920	Italian	200	44	111	156
921	Italian	100	37	40	77
923	Italian Life Skills	100	16	4	20
924	Italian Life Skills	200	4	3	7
930	Japanese	200	1,065	1,269	2,338
931	Japanese	100	237	276	514
933	Japanese Life Skills	200	11	4	15
940	Korean	200	25	76	101
941	Korean	100	20	37	57
944	Korean Life Skills	200		1	1
950	Latin	200	44	73	117
951	Latin	100	3		4
981	Macedonian	200	1	7	8
982	Macedonian	100	2		2
990	Modern Greek	200	7	11	18
991	Modern Greek	100	1		1
1010	Russian	200	1	3	4
1011	Russian	100	2	1	3
1040	Spanish	200	42	53	95
1041	Spanish	100	18	17	35
1043	Spanish Life Skills	200	1	1	2

Table 21

Board Developed Course enrolments in Year 10 subjects in NSW Government schools, 2023 (continued)

Course ID	Course name	Hours	Boys	Girls	Total
1044	Spanish Life Skills	100	1		1
1050	Turkish	200		13	13
1051	Turkish	100	3	2	5
1071	Vietnamese	200	34	29	63
1072	Vietnamese	100	9	15	24
1075	Vietnamese Life Skills	200		1	1
1605	Agricultural Technology	200	1,905	1,467	3,373
1606	Agricultural Technology	100	732	604	1,336
1608	Agricultural Technology Life Skills	100	72	29	101
1609	Agricultural Technology Life Skills	200	54	26	80
1625	Food Technology	200	4,759	6,988	11,749
1626	Food Technology	100	1,814	2,208	4,024
1628	Food Technology Life Skills	100	183	93	276
1629	Food Technology Life Skills	200	373	159	532
1650	Design and Technology	200	979	910	1,889
1651	Design and Technology	100	585	397	982
1653	Design and Technology Life Skills	100	50	31	81
1654	Design and Technology Life Skills	200	113	49	162
1700	Graphics Technology	200	482	322	804
1701	Graphics Technology	100	130	89	219
1703	Graphics Technology Life Skills	100	3	1	4
1704	Graphics Technology Life Skills	200	3	1	4
1800	Industrial Technology (Automotive)	200	164	17	181
1801	Industrial Technology (Automotive)	100	32	10	42
1802	Industrial Technology (Building and Construction)	200	326	48	374
1803	Industrial Technology (Building and Construction)	100	249	30	279
1806	Industrial Technology (Electronics)	200	369	18	387
1807	Industrial Technology (Electronics)	100	212	11	223
1808	Industrial Technology (Engineering)	200	2,093	257	2,350
1809	Industrial Technology (Engineering)	100	552	119	671
1810	Industrial Technology (Farm Maintenance)	200	13		13
1811	Industrial Technology (Farm Maintenance)	100	4		4

Table 21

## Board Developed Course enrolments in Year 10 subjects in NSW Government schools, 2023 (continued)

Course ID	Course name	Hours	Boys	Girls	Total
1814	Industrial Technology (Metal)	200	2,022	283	2,305
1815	Industrial Technology (Metal)	100	924	236	1,160
1816	Industrial Technology (Multimedia/Photography)	200	904	345	1,249
1817	Industrial Technology (Multimedia/Photography)	100	325	130	456
1820	Industrial Technology (Timber)	200	5,374	1,204	6,579
1821	Industrial Technology (Timber)	100	1,647	594	2,241
1830	Information and Software Technology	200	3,032	782	3,815
1831	Information and Software Technology	100	778	275	1,053
1832	Information and Software Technology (Life Skills)		22	6	28
1833	Information and Software Technology Life Skills	100	40	8	48
1860	Industrial Technology –Automotive Life Skills	100	1		1
1861	Industrial Technology –Building and Construction Life Skills	100	10	1	11
1864	Industrial Technology –Engineering Life Skills	100	2		2
1867	Industrial Technology –Metal Life Skills	100	13	2	15
1868	Industrial Technology –Multimedia Life Skills	100	11	2	13
1870	Industrial Technology –Timber Life Skills	100	67	10	77
1880	Industrial Technology –Automotive Life Skills	200	1		1
1881	Industrial Technology –Building and Construction Life Skills	200	2		2
1884	Industrial Technology –Engineering Life Skills	200	5		5
1887	Industrial Technology –Metal Life Skills	200	32	1	33
1888	Industrial Technology –Multimedia Life Skills	200	19	3	22
1890	Industrial Technology –Timber Life Skills	200	96	13	109
1900	Textiles Technology	200	55	1,138	1,195
1901	Textiles Technology	100	54	640	695
1903	Textiles Technology Life Skills	100	6	10	16
1906	Textiles Technology Life Skills	200	8	13	21
2000	Dance	200	19	867	886
2001	Dance	100	13	186	199
2002	Dance (Life Skills)		3	13	16
2003	Dance Life Skills	100	1	3	4
2010	Drama	200	625	1,650	2,281
2011	Drama	100	244	564	809

Table 21

Board Developed Course enrolments in Year 10 subjects in NSW Government schools, 2023 (continued)

Course ID	Course name	Hours	Boys	Girls	Total
2012	Drama (Life Skills)		17	12	29
2013	Drama Life Skills	100	20	6	26
2050	Music	200	2,838	2,655	5,498
2051	Music	100	899	750	1,651
2052	Music (Life Skills)		154	67	221
2053	Music Life Skills	100	157	64	221
2060	Visual Arts	200	2,217	5,784	8,011
2061	Visual Arts	100	769	1,642	2,417
2062	Visual Arts (Life Skills)		389	185	574
2063	Visual Arts Life Skills	100	238	100	338
2070	Visual Design	200	285	795	1,080
2071	Visual Design	100	229	546	775
2072	Visual Design (Life Skills)		12	5	17
2073	Visual Design Life Skills	100	6	3	9
2080	Photographic and Digital Media	200	1,087	2,102	3,198
2081	Photographic and Digital Media	100	809	1,267	2,077
2082	Photographic and Digital Media (Life Skills)		22	19	41
2083	Photographic and Digital Media Life Skills	100	14	8	22
2420	Personal Development, Health and Physical Education	200	23,434	21,973	45,424
2421	Personal Development, Health and Physical Education	100	3,579	3,309	6,901
2423	Personal Development, Health and Physical Education Life Skills		1,650	706	2,357

### Number of students meeting the curriculum requirements for the Record of School Achievement (RoSA), Year 10 students in NSW Government schools, 2023

	Boys	Girls	Total
<b>Number of students</b>	<b>28,232</b>	<b>25,712</b>	<b>53,978</b>

Source: Department of Education, data derived from NSW Education Standards Authority (NESA) data, February 2024.

**Notes:**

- The table only includes Board Developed Courses.
- The table includes students studying a language through the Secondary College of Languages (formerly Saturday School of Community Languages).
- Hours equal to the number of hours studied over Years 9 and 10.
- From 2012, eligible students who leave school before receiving their HSC will receive the NSW RoSA.
- In 2023, the Total columns include non-binary students. These students are unable to be reported separately due to system limitations.
- Students need to complete the mandatory requirements for Stage 5 (Year 10) to be eligible for a RoSA. They must have:
  - attended a government school, an accredited non-government school or a recognised school outside NSW
  - undertaken and completed courses of study that satisfy NESA curriculum and assessment requirements for the Record of School Achievement
  - complied with any other regulations or requirements (such as attendance) imposed by the Minister or NESA
  - completed Year 10.
- Students intending to leave school before completing their HSC can take optional online literacy and numeracy tests. They are designed to provide an overview of a student's level of achievement in these areas.
- Students are required to complete the following mandatory curriculum for the RoSA:
  - English
  - Mathematics
  - Science
  - Human Society and its Environments
  - Languages other than English
  - Technological and Applied Studies
  - Creative Arts
  - Personal Development, Health and Physical Education.

Table 22

## Course enrolments in Year 11 and Year 12 subjects in NSW Government schools, 2023

Course name	Units	Year 11			Year 12		
		Boys	Girls	Total	Boys	Girls	Total
Aboriginal Studies	2	266	676	945	174	466	641
Aboriginal Studies (Life Skills)	2	52	23	75	32	18	50
Agriculture	2	630	676	1,306	350	417	768
Agriculture Life Skills	2	74	26	100	41	19	60
Ancient History	2	2,959	3,537	6,514	1,835	2,365	4,206
Ancient History Life Skills	2	91	49	140	65	30	95
Arabic Continuers	2	62	85	147	32	64	96
Arabic Extension	1				9	29	38
Armenian Continuers	2	4	1	5	1	2	3
Automotive	2	14	2	16	4	1	5
Automotive	4	1	2	3	1		1
Automotive Examination	2				1		1
Automotive Specialisation Study	1	1		1			
Automotive Specialisation Study	2	1		1	2		2
Biology	2	5,416	8,622	14,056	3,877	6,658	10,541
Business and Economics Life Skills	2	46	29	75	47	24	71
Business Services	2	462	810	1,273	237	510	747
Business Services	4	2	8	10	4	25	29
Business Services Examination	2				152	368	520
Business Studies	2	7,223	5,741	12,973	4,865	4,210	9,079
Chemical World Science Life Skills	2	11	2	13	7	2	9
Chemistry	2	4,171	3,705	7,885	2,932	2,467	5,405
Chinese and Literature	2	90	113	203	60	82	142
Chinese Beginners	2	30	45	75	10	10	20
Chinese Continuers	2	54	104	158	30	46	76
Chinese Extension	1				5	10	15
Chinese in Context	2	22	45	67	24	46	70
Citizenship and Legal Studies Life Skills	2	31	18	49	25	19	44
Classical Greek Continuers	2				1	5	6
Community and Family Studies	2	961	6,747	7,716	589	4,816	5,410
Community and Family Studies Life Skills	2	107	115	222	56	98	154

Table 22

## Course enrolments in Year 11 and Year 12 subjects in NSW Government schools, 2023 (continued)

Course name	Units	Year 11			Year 12		
		Boys	Girls	Total	Boys	Girls	Total
Construction	2	2,625	274	2,902	1,672	144	1,816
Construction	4	2		2	25	1	26
Construction Examination	2				1,060	93	1,153
Creative Arts Life Skills	2	371	158	529	275	132	407
Dance	2	22	667	689	25	442	467
Dance Life Skills	2	1	11	12	4	5	9
Design and Technology	2	1,547	1,061	2,615	881	581	1,462
Design and Technology Life Skills	2	82	28	111	52	19	72
Drama	2	736	1,503	2,255	437	980	1,430
Drama Life Skills	2	32	32	65	28	29	57
Dutch Continuers	2				1		1
Earth and Environmental Science	2	1,117	1,218	2,340	754	760	1,514
Earth and Space Science Life Skills	2	39	22	61	47	23	70
Economics	2	2,678	1,333	4,011	1,767	903	2,670
Electrotechnology	2	9	1	10	3		3
Electrotechnology Examination	2				2		2
Engineering Studies	2	2,148	272	2,420	1,506	191	1,697
English (Advanced)	2	5,617	8,025	13,670	4,791	6,816	11,629
English (Standard)	2	10,659	10,303	20,989	8,538	8,898	17,447
English EAL/D	2	497	641	1,138	450	516	966
English Extension	1	920	1,825	2,755			
English Extension 1	1				463	1,194	1,664
English Extension 2	1				158	514	677
English Life Skills	2	1,400	649	2,051	1,150	560	1,711
English Studies	2	4,139	2,698	6,846	3,412	2,497	5,913
English Studies Examination	2				1,214	833	2,048
Entertainment Industry	2	512	513	1,030	288	316	606
Entertainment Industry	4				13	16	29
Entertainment Industry Examination	2				250	285	537
Entertainment Industry Specialisation Study	1	17	13	30	105	151	257
Filipino Continuers	2	2	5	7		1	1

Table 22

## Course enrolments in Year 11 and Year 12 subjects in NSW Government schools, 2023 (continued)

Course name	Units	Year 11			Year 12		
		Boys	Girls	Total	Boys	Girls	Total
Financial Services	2	10	5	15	4	2	6
Financial Services	4				1	1	2
Financial Services Examination	2				5	1	6
Financial Services Specialisation Study	1					1	1
Food Technology	2	1,347	2,225	3,576	784	1,511	2,295
Food Technology Life Skills	2	387	193	581	283	162	445
French Beginners	2	83	232	316	48	148	196
French Continuers	2	72	189	262	57	122	179
French Extension	1				9	28	37
Geography	2	1,503	1,256	2,765	909	802	1,711
Geography Life Skills	2	81	24	106	69	28	97
German Beginners	2	26	36	63	19	22	41
German Continuers	2	50	45	95	40	37	77
German Extension	1				13	6	19
Hindi Continuers	2	3	5	8	6	10	16
History Extension	1				246	434	680
Hospitality	2	2,465	4,218	6,688	1,370	2,922	4,298
Hospitality	4	10	9	19	64	93	157
Hospitality Examination (Food and Beverage)	2				582	1,600	2,186
Hospitality Examination (Kitchen Operations and Cookery)	2				444	729	1,173
Hospitality Specialisation Study	2				5	10	15
Human Services	2	21	135	157	29	195	224
Human Services	4		1	1			
Human Services Examination	2				16	98	114
Human Services Specialisation Study	1					1	1
Human Society and its Environment Life Skills	2	528	223	752	373	153	526
Hungarian Continuers	2					1	1
Indonesian and Literature	2		1	1	1		1
Indonesian Beginners	2	2	8	10	1	6	7
Indonesian Continuers	2		26	26	7	15	22
Indonesian Extension	1					3	3



Table 22

Course enrolments in Year 11 and Year 12 subjects in NSW Government schools, 2023 (continued)

Course name	Units	Year 11			Year 12		
		Boys	Girls	Total	Boys	Girls	Total
Industrial Technology	2	4,813	1,095	5,919	2,807	713	3,522
Industrial Technology Life Skills	2	174	31	205	113	21	134
Information and Digital Technology	2	207	49	259	195	44	240
Information and Digital Technology	4					1	1
Information and Digital Technology Examination	2				140	41	182
Information Processes and Technology	2	1,138	364	1,503	892	213	1,106
Information Processes and Technology Life Skills	2	47	12	59	50	11	61
Investigating Science	2	1,663	1,366	3,034	1,117	924	2,042
Investigating Science Life Skills	2	406	170	577	248	118	366
Italian Beginners	2	32	99	131	23	33	56
Italian Continuers	2	14	15	30	6	14	20
Italian Extension	1				1	1	2
Japanese Beginners	2	246	286	532	171	213	386
Japanese Continuers	2	326	470	797	192	273	465
Japanese Extension	1				39	72	111
Japanese in Context	2	8	15	23	11	26	37
Khmer Continuers	2	5	9	14	6	4	10
Korean and Literature	2	3	9	12	10	14	24
Korean Beginners	2	48	135	183	21	86	107
Korean Continuers	2	10	37	47	6	6	12
Korean in Context	2	14	21	35	16	26	42
Latin Continuers	2	16	32	48	15	45	60
Latin Extension	1				8	27	35
Legal Studies	2	2,826	4,906	7,744	1,951	3,614	5,572
Living World Science Life Skills	2	142	79	221	101	62	163
Macedonian Continuers	2	6	5	11	3	1	4
Mathematics Advanced	2	7,003	5,549	12,560	4,386	3,612	8,003
Mathematics Extension	1	3,461	2,418	5,879			
Mathematics Extension 1	1				2,714	1,688	4,405
Mathematics Extension 2	1				1,280	661	1,943
Mathematics Life Skills	2	1,280	580	1,861	1,025	461	1,487

Table 22

Course enrolments in Year 11 and Year 12 subjects in NSW Government schools, 2023 (continued)

Course name	Units	Year 11			Year 12		
		Boys	Girls	Total	Boys	Girls	Total
Mathematics Standard	2	11,197	11,424	22,645			
Mathematics Standard 1	2				1,895	1,533	3,428
Mathematics Standard 1 Examination	2				853	807	1,660
Mathematics Standard 2	2				7,456	8,210	15,675
Modern Greek Beginners	2	15	24	39	15	27	42
Modern Greek Continuers	2	15	10	25	9	12	21
Modern Greek Extension	1				3	6	9
Modern History	2	3,942	3,971	7,927	2,753	2,572	5,332
Modern History Life Skills	2	115	42	157	91	30	121
Music 1	2	2,123	1,698	3,827	1,399	1,221	2,624
Music 2	2	227	202	431	199	190	389
Music Extension	1				92	110	202
Music Life Skills	2	142	77	219	96	48	144
Persian Continuers	2	9	16	25	4	17	21
Personal Development, Health and Physical Education Life Skills	2	954	392	1,347	744	271	1,015
Personal Development, Health and Physical Education	2	5,365	6,016	11,384	3,797	4,773	8,571
Physical World Science Life Skills	2	19	5	25	10	2	12
Physics	2	4,735	1,573	6,311	3,519	897	4,418
Polish Continuers	2	2	4	6	1	6	7
Portuguese Continuers	2	6	7	13	2	3	5
Primary Industries	2	534	478	1,012	309	244	553
Primary Industries	4	8	1	9	25	27	52
Primary Industries Examination	2				191	196	387
Primary Industries Specialisation Study	1				12	8	20
Primary Industries Specialisation Study	2				3	1	4
Primary Industries Specialisation Study	4				3	6	9
Punjabi Continuers	2	24	13	37	7	12	19
Retail Services	2	633	850	1,484	419	653	1,072
Retail Services	4		1	1	21	18	39
Retail Services Examination	2				302	477	779

Table 22

## Course enrolments in Year 11 and Year 12 subjects in NSW Government schools, 2023 (continued)

Course name	Units	Year 11			Year 12		
		Boys	Girls	Total	Boys	Girls	Total
Russian Continuers	2	10	11	21	6	17	23
Science Extension	1				134	158	292
Serbian Continuers	2	9	16	25	6	11	17
Society and Culture	2	1,127	4,075	5,214	630	2,669	3,307
Society and Culture Life Skills	2	26	31	57	24	15	39
Software Design and Development	2	1,508	212	1,724	941	102	1,047
Spanish Beginners	2	53	141	194	32	73	105
Spanish Continuers	2	29	52	81	32	25	57
Spanish Extension	1				7	5	12
Studies of Religion I	1	229	184	414	88	110	199
Studies of Religion II	2	204	484	688	135	308	445
Studies of Religion II Life Skills	2	2	5	7	3	4	7
Tamil Continuers	2	2	1	3	1	1	2
Technology Life Skills	2	263	133	396	251	83	334
Textiles and Design	2	113	1,311	1,428	36	764	800
Textiles and Design Life Skills	2	9	23	33	2	17	19
Tourism, Travel and Events	2	2	6	9	1	4	5
Tourism, Travel and Events Examination	2					2	2
Turkish Continuers	2	3	12	15	5	11	16
Vietnamese Continuers	2	59	87	146	40	64	104
Visual Arts	2	1,977	4,886	6,891	1,330	3,703	5,047
Visual Arts Life Skills	2	347	220	568	249	181	431
Work and the Community Life Skills	2	880	378	1,259	689	291	980

Source: Department of Education, data derived from NSW Education Standards Authority (NESA) data, February 2024.

**Notes:**

- Based on school of tuition, NESA developed courses only, and includes subjects studied through distance education, the NSW School of Languages and Aurora College.
- In 2023, the Total columns include non-binary students. These students are unable to be reported separately due to system limitations.

## Progress measures

**Table 23**

**Apparent retention (%) in NSW Government schools, 2013–2023**

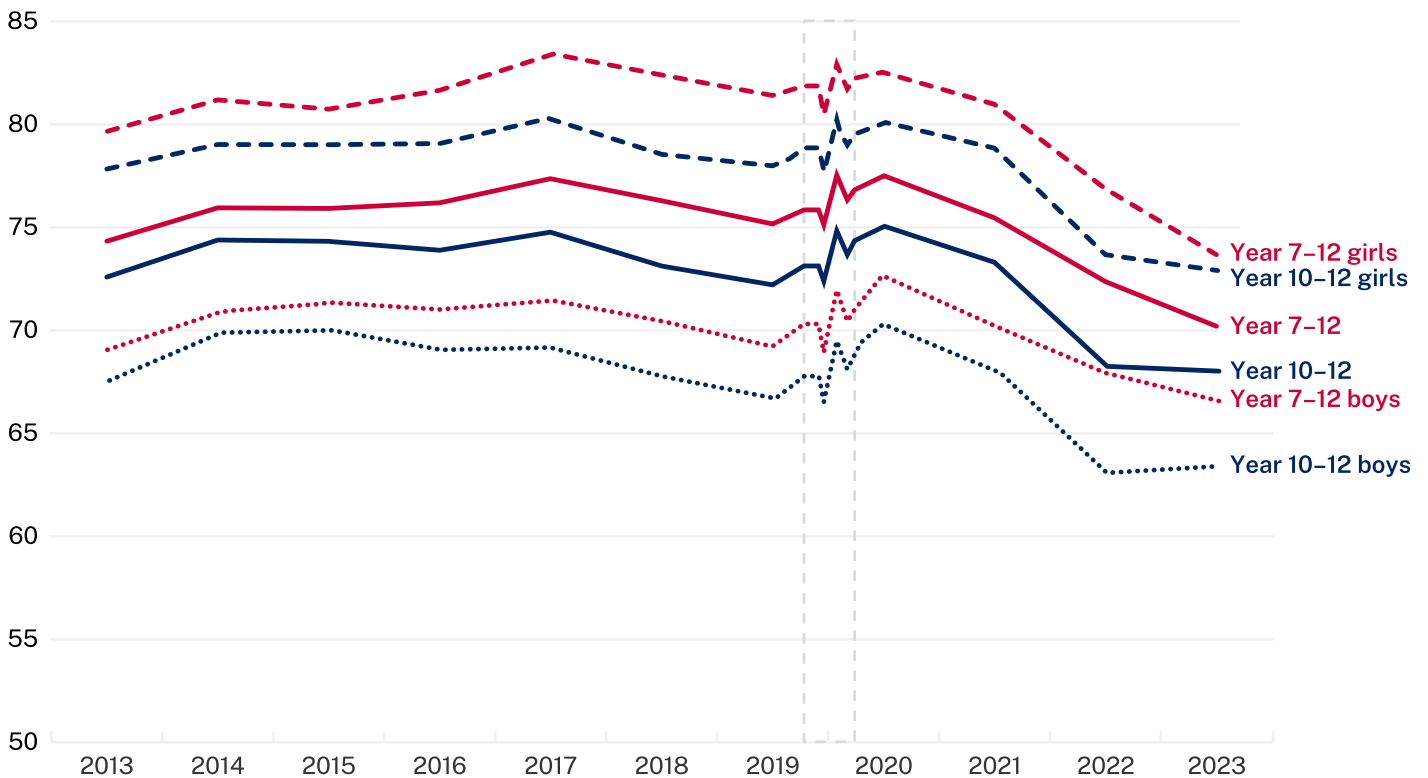
Year	Year 7–10			Year 7–11			Year 7–12			Year 10–11			Year 10–12		
	Boys	Girls	Total	Boys	Girls	Total	Boys	Girls	Total	Boys	Girls	Total	Boys	Girls	Total
2013	102.0	102.1	102.0	88.1	94.6	91.3	69.0	79.7	74.3	86.9	92.0	89.4	67.6	77.8	72.6
2014	103.0	103.2	103.1	89.3	94.9	92.1	70.9	81.2	75.9	87.6	92.9	90.2	69.9	79.0	74.4
2015	103.3	103.9	103.6	90.2	95.9	93.0	71.3	80.7	75.9	87.6	93.0	90.2	70.0	79.0	74.4
2016	103.7	105.0	104.3	89.4	96.9	93.1	71.1	81.6	76.2	86.5	93.3	89.9	69.0	79.1	73.9
2017	103.7	104.4	104.0	88.8	96.0	92.4	71.5	83.4	77.4	85.6	91.5	88.5	69.2	80.3	74.7
2018	103.4	103.1	103.2	86.7	95.2	90.9	70.4	82.4	76.3	83.6	91.2	87.3	67.8	78.5	73.1
2019	103.0	102.7	102.8	86.2	93.9	90.0	69.2	81.4	75.2	83.4	91.1	87.2	66.7	78.0	72.3
2020	107.7	104.4	106.1	89.3	95.0	92.0	72.6	82.5	77.5	86.7	92.5	89.5	70.2	80.1	75.0
2021	105.1	101.0	103.1	86.0	91.0	88.5	70.1	80.9	75.4	79.9	87.2	83.4	68.1	78.8	73.3
2022	104.1	99.0	101.6	82.2	86.7	84.4	67.9	76.9	72.3	78.2	85.8	81.9	63.1	73.6	68.2
<b>2023</b>	<b>98.5</b>	<b>97.5</b>	<b>98.0</b>	<b>81.2</b>	<b>84.2</b>	<b>82.7</b>	<b>66.6</b>	<b>73.6</b>	<b>70.1</b>	<b>78.0</b>	<b>85.1</b>	<b>81.4</b>	<b>63.4</b>	<b>72.9</b>	<b>68.0</b>

**Notes:**

- Apparent retention is based on full-time equivalent (FTE) units, including full-time and part-time students. Students enrolled in distance education classes are included with their appropriate grade levels.
- Legislation raising the minimum school leaving age from 15 to 17 came into effect in January 2010. The Year 12 cohort in 2012 was the first group of students who were required to complete Year 10. This meant that the Year 10 enrolment figure was higher than in previous years, resulting in a relative decline in Year 10 to Year 12 apparent retention in 2012, despite the Year 7 to Year 12 apparent retention rate increasing slightly.
- From 2020, students in mainstream support classes (previously excluded from this calculation) are reported by their underlying grade of enrolment. This results in a rolling break in time-series for apparent retention rates because enrolments increased in 2020 due to the revised counting rule. For more detail, please refer to CESE fact sheet [NSW public school student retention rates](#).
- Refer to explanatory notes 10 and 17.

Figure 6

## Apparent retention (%) in NSW Government schools, 2013–2023



## Notes:

- From 2020, students in mainstream support classes (previously excluded from this calculation) are reported by their underlying grade of enrolment. This results in a rolling break in the time series for apparent retention rates because enrolments increased in 2020 due to the revised counting rule. For more detail, please refer to CESE factsheet [NSW public school student retention rates](#).
- Refer to explanatory notes 10 and 17.

**Table 24****NSW Government school HSC completions, 2018–2023**

Number of students	2018	2019	2020	2021	2022	2023
Students who completed one or more HSC courses (all students)	42,887	41,415	42,106	41,608	40,611	41,060
Students who completed one or more HSC courses (Aboriginal and/or Torres Strait Islander students)	2,054	2,123	2,192	2,166	2,189	2,243
HSC Award (all students)	38,100	36,886	36,910	36,698	35,492	36,121
HSC Award (Aboriginal and/or Torres Strait Islander students)	1,671	1,804	1,805	1,774	1,726	1,870

**Source:** Department of Education, data derived from NSW Education Standards Authority (NESA) and National Schools Statistics Collection (NSSC) data, February 2024.

**Notes:**

- Identification of Aboriginal and/or Torres Strait Islander students in this table is based on Aboriginality reported in the National Schools Statistics Collection (NSSC) conducted each August, rather than the NESA data.
- Students who have completed one or more HSC courses but have not yet been awarded the HSC receive a Record of Achievement.
- HSC pathways offer a flexible program for students to complete the HSC over a period of up to 5 years. The pathways provisions include accumulating courses, repeating courses, acceleration, recognition of prior learning and combining study with part-time traineeships or apprenticeships. These students are included in the count of students who have completed one or more HSC courses.
- Bradfield College included.
- Refer to explanatory notes 9 and 13.

**Table 25****Semester 1 attendance rates (%) in NSW Government schools, Years 1–10 2023**

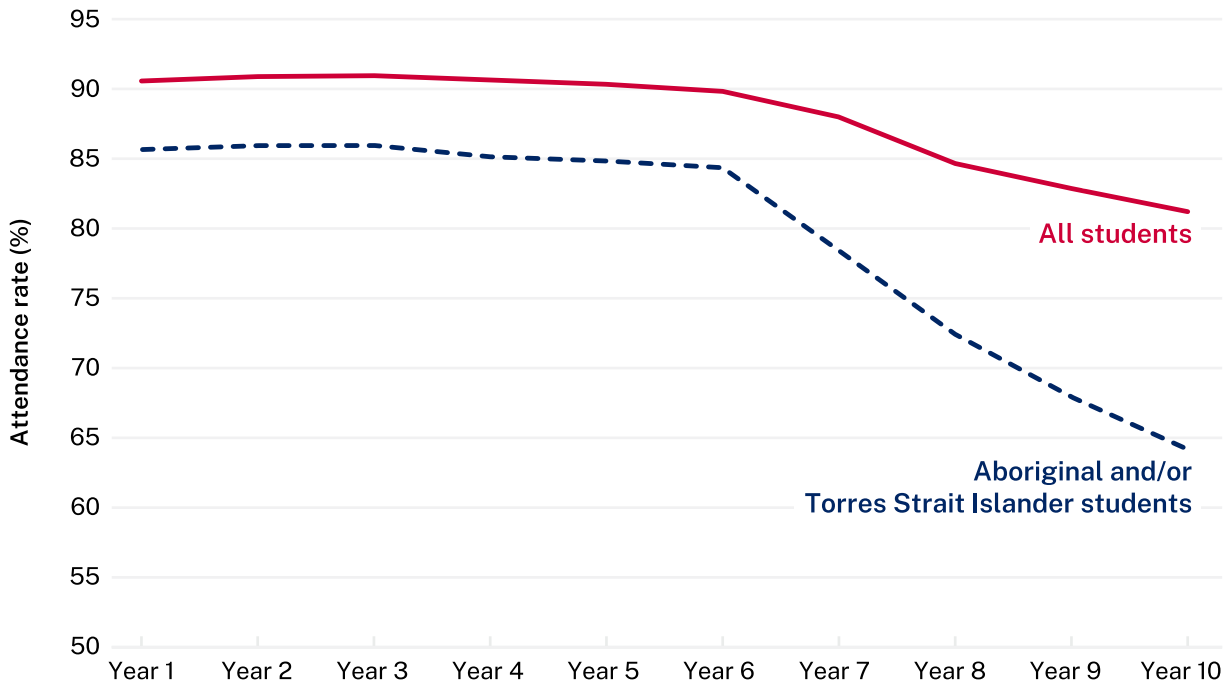
Year	Aboriginal and/or Torres Strait Islander students	All students
Year 1	85.6	90.5
Year 2	85.9	90.8
Year 3	85.9	90.9
Year 4	85.1	90.6
Year 5	84.8	90.3
Year 6	84.2	89.8
Primary ungraded	78.9	82.3
<b>Primary total (Years 1–6 including support)</b>	<b>85.2</b>	<b>90.4</b>
Year 7	78.4	87.9
Year 8	72.4	84.6
Year 9	68.0	82.8
Year 10	64.1	81.1
Junior Secondary ungraded	61.4	73.9
<b>Secondary total (Years 7–10 including support)</b>	<b>70.6</b>	<b>83.9</b>
<b>Years 1–10 (including support)</b>	<b>79.7</b>	<b>88.1</b>

**Notes:**

- The attendance data are for full-time, Year 1–10 students only (including support) in Semester 1 2023.
- All students in Years 1 to 10 in NSW Government schools are regarded as full-time.
- From 2020, students in mainstream support classes are reported by their underlying grade of enrolment. Students in schools for specific purposes (SSPs) are included as 'ungraded'.
- For more detailed analysis of Semester 1 school attendance, please refer to [CESE Semester 1 student attendance fact sheet](#).
- Refer to explanatory notes 9 and 16.

Figure 7

Semester 1 attendance rates (%) in NSW Government schools, Years 1–10, 2023

**Notes:**

- From 2020, students in mainstream support classes are reported by their underlying grade of enrolment.
- Excludes Kindergarten, Years 11 and 12, and students in schools for specific purposes (SSPs).
- Refer to explanatory notes 9 and 16.



## Explanatory notes

Each year the education departments of all states and territories in Australia, and the Australian Government Department of Education collect data on government and non-government schools, and their students. Since 1994 the date for collection has been the first Friday in August, as close as possible with the national Census of Population and Housing conducted every 5 years. The 2023 census of NSW Government schools was conducted on August 4.

This bulletin consolidates data from the department's Semester 1 and mid-year data collections. It also reports on non-government data collected by the Australian Government Department of Education.

Government and non-government school data form part of the National Schools Statistics Collection which is reported annually by the Australian Bureau of Statistics in Schools Australia (Catalogue No. 4221.0).

### 1. Primary and secondary schools

Primary schools enrol students in Kindergarten to Year 6; secondary schools generally enrol students in Years 7 to 12, although some secondary schools only enrol students in the senior years, that is Years 11 to 12 or the junior years, that is, Years 7 to 10.

### 2. Central/Community schools

Central/community schools have primary and secondary departments and may be established where there is an enrolment in secondary classes of 20 or more. Enrolments in primary departments and secondary departments are included with the appropriate student data.

### 3. Schools for specific purposes

Schools for specific purposes (SSPs) or Special Schools support students with intellectual disability, mental health disorder or autism spectrum disorder, students with physical disability or sensory impairment, and students with learning difficulties or behaviour disorder. Students in SSPs are usually counted by type of class rather than by disability type as many students have comorbid disability. Multi-categorical classes include students with one or more than one disability with the focus being on placing students together who have similar needs. Some SSPs have no permanent enrolments because the children temporarily attending them are enrolled and counted in their own schools. These are mainly hospital schools.

### 4. Government preschools

From 2020, School of the Air preschool is reported separately from Dubbo School of Distance Education preschool.

### 5. Support classes in mainstream schools

The majority of support classes are established in mainstream primary, secondary and central schools. Specialist support classes cater for students with moderate to high learning and support needs including students with intellectual disability, mental health disorder, autism spectrum disorder, physical disability, sensory impairment and behaviour disorders. Many students have comorbid disability. Multi-categorical classes include students with one or more than one disability with the focus being on placing students together who have similar needs. Students enrolled in support classes are reported according to the type of class rather than by their year of schooling. Support class enrolments are included with other primary and secondary enrolments in some tables. From 2020, in some tables students in support classes in mainstream schools are reported by their underlying grade of enrolment. Please refer to 'Notes' section under each table.

### 6. Distance education

Distance education centres (DECs) provide schooling for students who are isolated or whose special circumstances prevent them from attending a regular school. They operate either as separate schools or as units within regular primary, central and high schools. Students enrolled in DECs are counted in their corresponding years of schooling.

In conjunction with the NSW School of Languages and Aurora College, DECs also provide individual subject enrolment, widening study opportunities for secondary students. These students are enrolled and counted at their home schools.

### 7. Part-time students

Students in Years 11 or 12 can enrol to study as a part-time student or a full-time student. For the annual census, a part-time student is enrolled in less than 10 units, regardless of where those units are studied. All Kindergarten to Year 10 students are considered to be full-time.

## 8. Full-time equivalent enrolments

Student enrolments are generally reported in full-time equivalent (FTE) units. The FTE for students studying less than 10 units, the minimum workload, is determined by the formula:  $0.1 \times$  the number of units studied and represented as a proportion of the full-time enrolment of 1.0 FTE.

## 9. Aboriginal and/or Torres Strait Islander students

Students are counted as Aboriginal and/or Torres Strait Islanders if they are identified as such on the school enrolment form.

Throughout this report, where space does not allow for the full description of Aboriginal and/or Torres Strait Islander students, the term 'Aboriginal' is used to describe the many nations, language groups and clans in NSW, including those from the Torres Strait.

## 10. Apparent Retention Rates (ARR)

Retention rates are 'apparent' as they do not track individual students through their final years of secondary schooling. What they measure is the ratio of the total number of students in a designated year (for example, Year 12 in 2023) divided by the total number of students in a previous year (for example, Year 7 in 2018). This would be the Year 7 to 12 apparent retention rate in 2023.

Care should be taken in the interpretation of apparent retention rates, which can exceed 100%, because the method of calculation does not take into account a range of factors such as migration, interstate movements of students, transfers to and from non-government schools, part-time schooling, students repeating a year of schooling, or students pursuing other education and training pathways.

## 11. Language Background other than English (LBOTE)

Students are counted as being of language background other than English if in their home a language other than English is spoken by the students, parents or guardians.

## 12. Class size

The audit of class sizes in NSW Government primary schools is undertaken in March each year. The audit does not include schools for specific purposes, distance education centres or intensive English centres. The number of classes, average class sizes and enrolment numbers exclude support classes in primary and central schools.

## 13. Higher School Certificate (HSC)

The HSC is the highest educational award in secondary education in NSW. It is awarded to students who have satisfactorily completed Years 11 and 12 at secondary school. To be eligible, students must meet HSC course requirements and sit for the statewide HSC examinations.

## 14. Colleges

The secondary schools in some areas have been transformed into colleges in order to provide broader opportunities and better facilities for students. A college is the amalgamation of all the secondary schools within a specific area. Each former secondary school has become a campus of their college. A senior college campus is generally for students in Years 11 and 12 but in some cases, may include Year 10 students. The colleges have formed cooperative ventures with TAFE Institutes and universities. They offer a wide range of options from specialist senior HSC courses to school re-entry courses.

## 15. Family Occupation and Education Index

The Family Occupation and Education Index (FOEI) is a school-level index of educational disadvantage related to socioeconomic background. It has been selected as the basis of the equity loading for socio-economic background in the department's Resource Allocation Model.

FOEI is constructed from parental education and occupation information collected from student enrolment forms and recorded in the Enrolment Registration Number system. FOEI uses a statistical regression model to produce a weighted combination of school-level parental education and occupation variables based on the extent to which each variable uniquely predicts average school performance. Further information on the methodology used to construct FOEI can be found in relevant publications released at [education.nsw.gov.au/cese](http://education.nsw.gov.au/cese).

Students in FOEI quarter 1 group are the top 25% of students in NSW Government schools who have the highest level of educational disadvantage related to socio-economic background.

## 16. Attendance

Government school systems in Australia measure attendance rates throughout Semester 1 (Terms 1 and 2). This is the time period specified for data collection in National Education Agreements between the Commonwealth and state and territory governments. The attendance rate is defined as the number of actual full time equivalent 'student days attended' over the collection period as a percentage of the total number of possible student days attended over the collection period (Measurement Framework for Schooling in Australia KPM 7(b)).

## 17. Non-binary students

Reporting by non-binary gender is not possible due to system limitations.

## 18. Statistical area 4 groupings

Previous publications of the Statistical Bulletin compared enrolments in DEC regions. From 2014 these geographies have been discontinued and replaced with a geographical structure based on the new ABS Australian Statistical Geography Standard (ASGS). Groups of ASGS Statistical Area 4 (SA4) boundaries in NSW have been combined into 11 groups for reporting and publication of department data. MCEECDYA refers to the Ministerial Council for Education, Early Childhood Development and Youth Affairs.

Name of SA4 groupings	SA4 Name
Sydney-North	Sydney -North Sydney and Hornsby Sydney -Northern Beaches Sydney -Ryde
Sydney-Inner	Sydney -City and Inner South Sydney -Eastern Suburbs Sydney -Inner West
Sydney-South	Sydney -Inner South West Sydney -Sutherland
Sydney-South West	Sydney -Outer South West Sydney -South West
Sydney-West	Sydney -Blacktown Sydney -Parramatta
Sydney-North West	Sydney -Baulkham Hills and Hawkesbury Sydney -Outer West and Blue Mountains
North East NSW	Coffs Harbour -Grafton Mid North Coast Richmond -Tweed
North West NSW	Hunter Valley excluding Newcastle Far West and Orana New England and North West
South West NSW	Central West Murray Riverina
South East NSW	Capital Region Illawarra Southern Highlands and Shoalhaven
Central Coast, Newcastle	Central Coast Newcastle and Lake Macquarie

## Statistical Area 4 groups



**Author:** CESE

**Centre for Education Statistics and Evaluation**  
GPO Box 33, Sydney NSW 2001, Australia

✉ [info@cese.nsw.gov.au](mailto:info@cese.nsw.gov.au)

🌐 [education.nsw.gov.au/cese](http://education.nsw.gov.au/cese)

🗨️ [yammer.com/det.nsw.edu.au](https://yammer.com/det.nsw.edu.au)

Licensed under the [Creative Commons Attribution 4.0 International License](https://creativecommons.org/licenses/by/4.0/)

**Please cite this publication as:**

CESE (Centre for Education Statistics and Evaluation) (2024) *Schools and students: 2023 statistical bulletin*, NSW Department of Education.