

Sharing what we heard – Our Draft Plan for NSW Public Education

How we listened

Thank you to everyone who took the time to participate in the consultation



Everyone in the NSW education community had an opportunity to provide suggestions on how we could improve the early version of the plan through the **have your say online tool**



We facilitated discussions with students as well as parents and carers with a child or with children in NSW public schools. This included 31 parents/carers in Indigenous family groups and 41 participants in the diverse language group sessions who speak Mandarin, Hindi, Arabic and Vietnamese.



Principals across our 2,200 schools and across all school settings facilitated a conversation with their staff on the draft plan and shared the feedback in a whole-of-school submission using the **have your say tool**



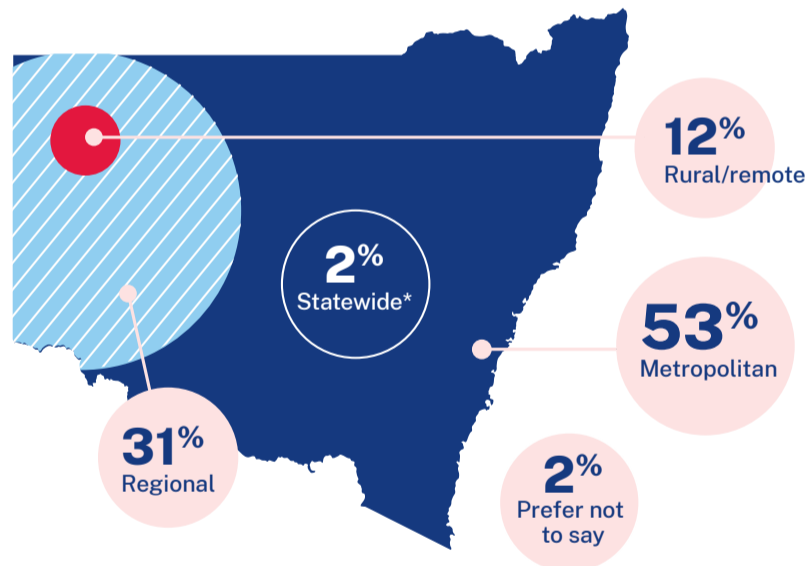
We brought together more than 480 school leaders, teachers and administrative support staff for more detailed discussions on the plan

Focus group discussions took place across NSW



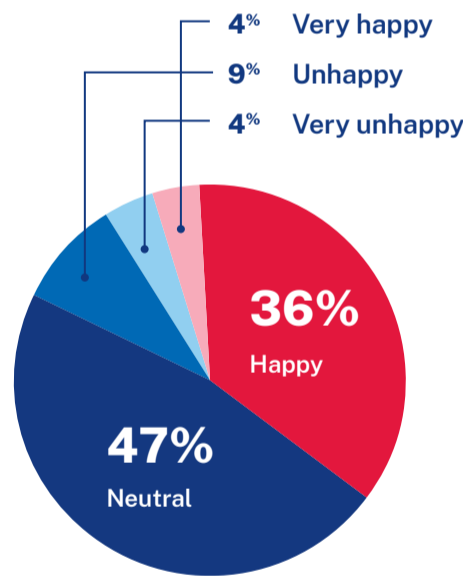
A closer look at responses from the have your say online tool

We had strong representation from people across the state



* Staff representing more than one location

40% of respondents felt happy or very happy about the plan



Key call outs from teachers, principals, support staff, parents and students

“If you want effective and explicit teaching we must have explicit curriculum.”
– **Teacher**

“There is a lot to like about this plan. For me personally, the focus on equity is what makes me happy, as well as a focus on supporting our teachers.”
– **Parent**

“There cannot be wellbeing of students without wellbeing of staff.”
– **School Leader**

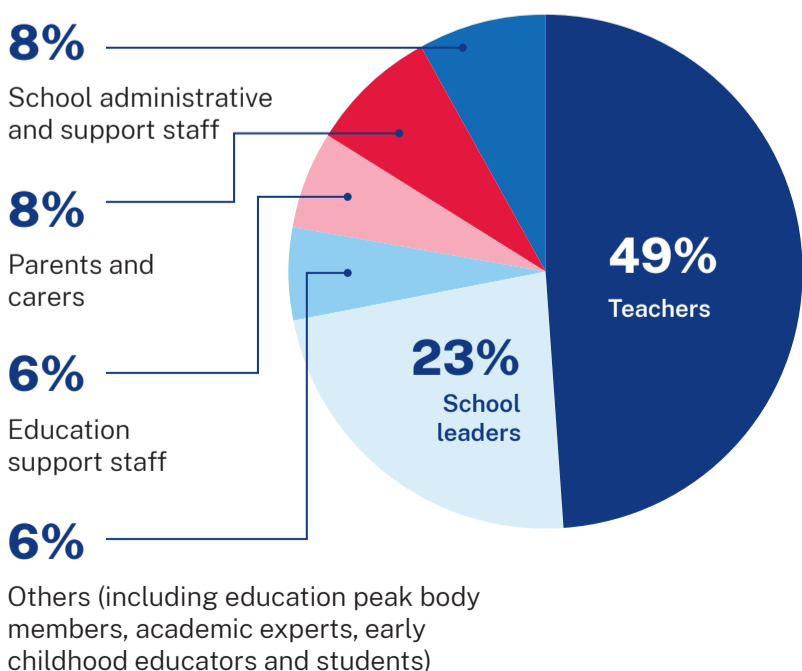
“Good that it is informed by teachers... We like the look of the plan but are hoping that this will all actually take place and help teachers do what they love to do – teach.”
– **Teacher**

“It is positive to see the draft plan for public education and that the NSW education system is trying to make admin workload better and education settings better for students.”
– **School admin support staff**

“It could be more ambitious with more new policies to tackle major problems facing students, including plummeting school attendance and slipping results.”
– **Student**

“Each approach requires detailed, long term and significant resourcing to ensure these outcomes are realised... I think a commitment to follow through to do this is essential so that the plan isn’t just nice words on a page.”
– **Education support staff**

5,371 individual submissions



at least **20,000**

Estimated number of participants



7,420

Individual and group responses



2,049

Number of whole-of-school or group responses

What’s next

We are revising the draft plan to incorporate the valuable feedback we received. We will come back to you in Term 4 with a final version of the Plan for NSW public education.