

01

Familiarise yourself with the syllabus



- Explore the [new syllabus](#) for the Stage(s) you teach.
- Complete eCourse – [Modern Languages K–10 Syllabus – from planning to practice in Years 7–10](#) (Accredited PD).
- Catch up on statewide staff meetings:
 - [‘Interacting in the Modern Languages K–10 Syllabus’](#) (1:08:24)
 - [‘An introduction to the syllabus and our support’](#) (40:07)
 - [‘Assessment and the Modern Languages K–10 Syllabus’](#) (44:15)
 - [Ready, set, program!](#) (40:50).

02

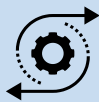
Explore how the syllabus is applied



- Engage with [resources](#) developed by Languages and Culture, including:
 - programming guidelines
 - unit of work guidelines and template
 - assessment guidelines
 - generic scope and sequences
 - language-specific scope and sequences, unit of works and assessment tasks.

03

Plan for change



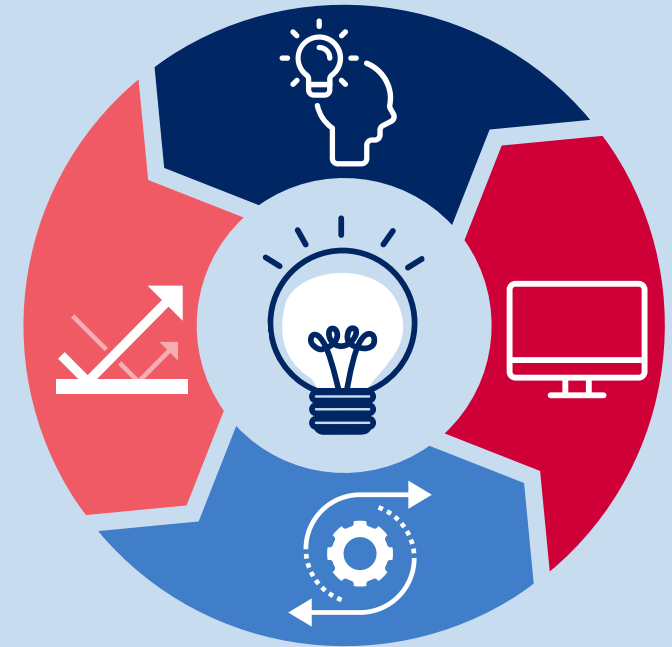
- Seek support through your [local network](#).
- Re-design your existing units (or create new ones) to align with the key changes:
 - communication is the central goal
 - students are supported to interact, using oral language
 - content focuses on depth (reusing and building on language structures) not breadth (large amounts of vocabulary)
 - content centres on the student’s personal worlds.
- Teach one of the sample units, to get a ‘feel’ for the new syllabus.

04

Review and reflect



- Ask your students what worked well, and what didn’t.
- Identify any areas for further development, and what support you need.



Modern Languages K–10 Syllabus

Curriculum implementation journey for teachers

Curriculum implementation journey links for teachers

Resources links

<https://curriculum.nsw.edu.au/learning-areas/languages/modern-languages-k-10-2022>

<https://education.nsw.gov.au/teaching-and-learning/curriculum/languages/planning-programming-and-assessing-languages-7-10#Modern1>

<https://education.nsw.gov.au/teaching-and-learning/curriculum/languages/language-teacher-network#Language1>

Accredited professional development

<https://myplsso.education.nsw.gov.au/mylearning/catalogue/details/1def470e-42f5-ed11-ba76-0003ffd06f24>

Video links

<https://www.youtube.com/watch?v=Yu-Ye4rXjwY>

https://www.youtube.com/watch?v=-TfYw_r9l94

<https://www.youtube.com/watch?v=UFUhmNQk31I>

<https://www.youtube.com/watch?v=Dsr07iGdkC0>