

School Community Charter

 **Collaborative. Respectful. Communication.**



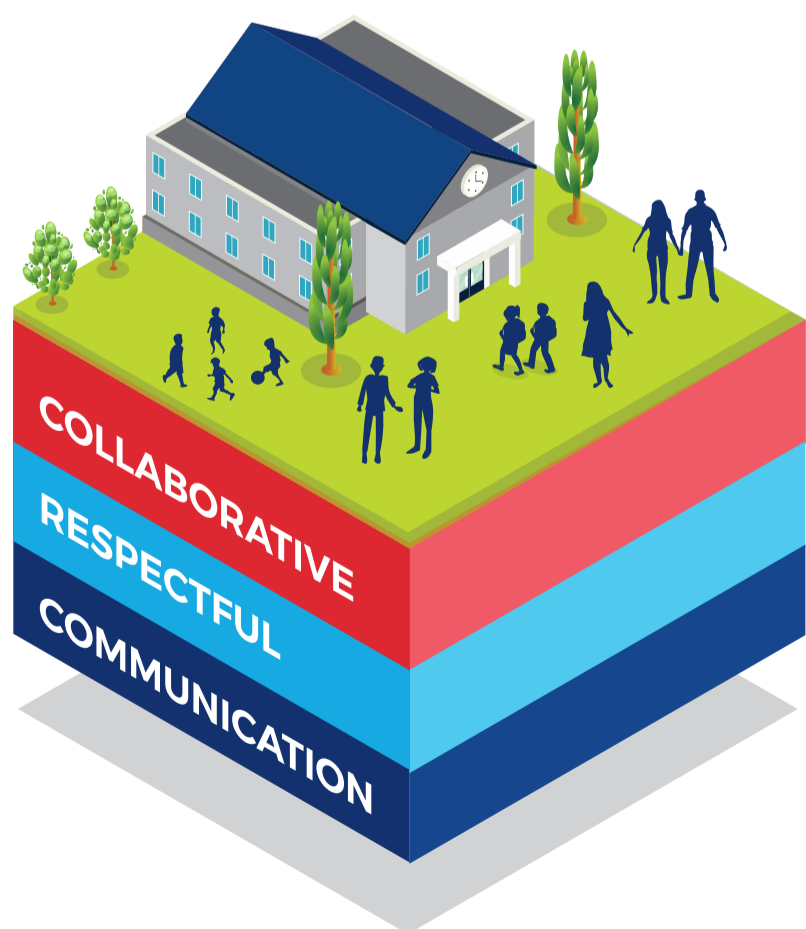
We work in partnership to promote student learning.



We treat each other with respect and fairness.



We communicate in a positive and constructive manner.



Respectful communication is a right

In all workplaces people have the right to feel safe and respected. Unacceptable and offensive behaviour has no place in our school communities.

Unacceptable behaviour:

- Aggressive or intimidating actions, such as violence, threatening gestures or physical proximity.
- Aggressive or intimidating language, including the use of obscenities, making sexist, racist or derogatory comments or using a rude tone.
- Treating members of the school community differently due to aspects such as their religion or disability.
- Inappropriate and time wasting communication.

We all play a part