

The frames

Different perspectives for viewing
and making art.



Subjective

Personal thoughts or feelings an artist has created into an artwork about an event, time or place.



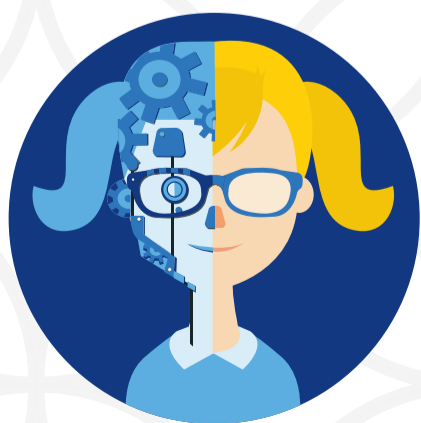
Structural

How the artwork is constructed, signs and symbols used, and material choices.



Cultural

Beliefs that form a custom or tradition about a group of people.



Postmodern

Challenging traditions of the past using a wide range of art materials including technology, to express current social issues.

The conceptual framework

Agencies of the art world that work together in the creation and study of art.



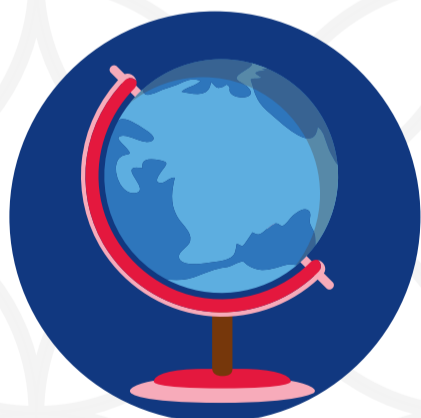
Artist

Can assume many roles such as an artist, designer, photographer or architect to create an artwork that reflects their time and place.



Artwork

2D, 3D and/ or 4D forms reflecting an artist's ideas, choices and actions.



World

Artists, artworks and the audience are influenced by the world, time and place around them.



Audience

Who is the artwork created for? How do audiences views change over time?

Practice

The intentional and informed activity to produce and interpret art.



A student as an artist

Their material choices and conceptual intentions.



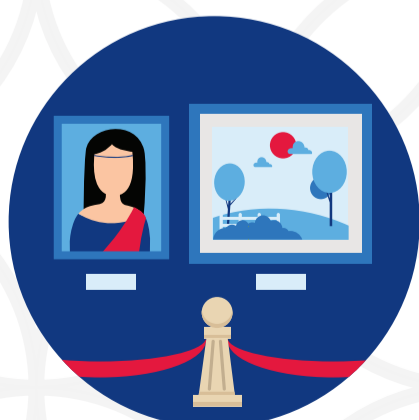
Artists, groups of artists

The knowledge, understanding and skills of art that informs the intentions, choices and actions of art movements or individual artists.



Art critics and art historians

Critical judgements and the collection of facts over time.



Art curators and galleries

Select and display artworks for the audience's aesthetic appreciation, enjoyment and judgement.