

## Paper Recycling

Paper and cardboard products are the most common items a school recycles. Private documents are secured in locked bins before being shredded and joining other paper fibres.

### 01 Collection & Transportation

Paper is collected from schools and taken to a plant where it is sorted. Recyclable paper is then bundled and sent to a recycling plant.

### 02 Processing

Paper is shredded then water and chemicals are added to make pulp. The pulp is washed and bleached then pumped onto wire screens.

### 03 Production

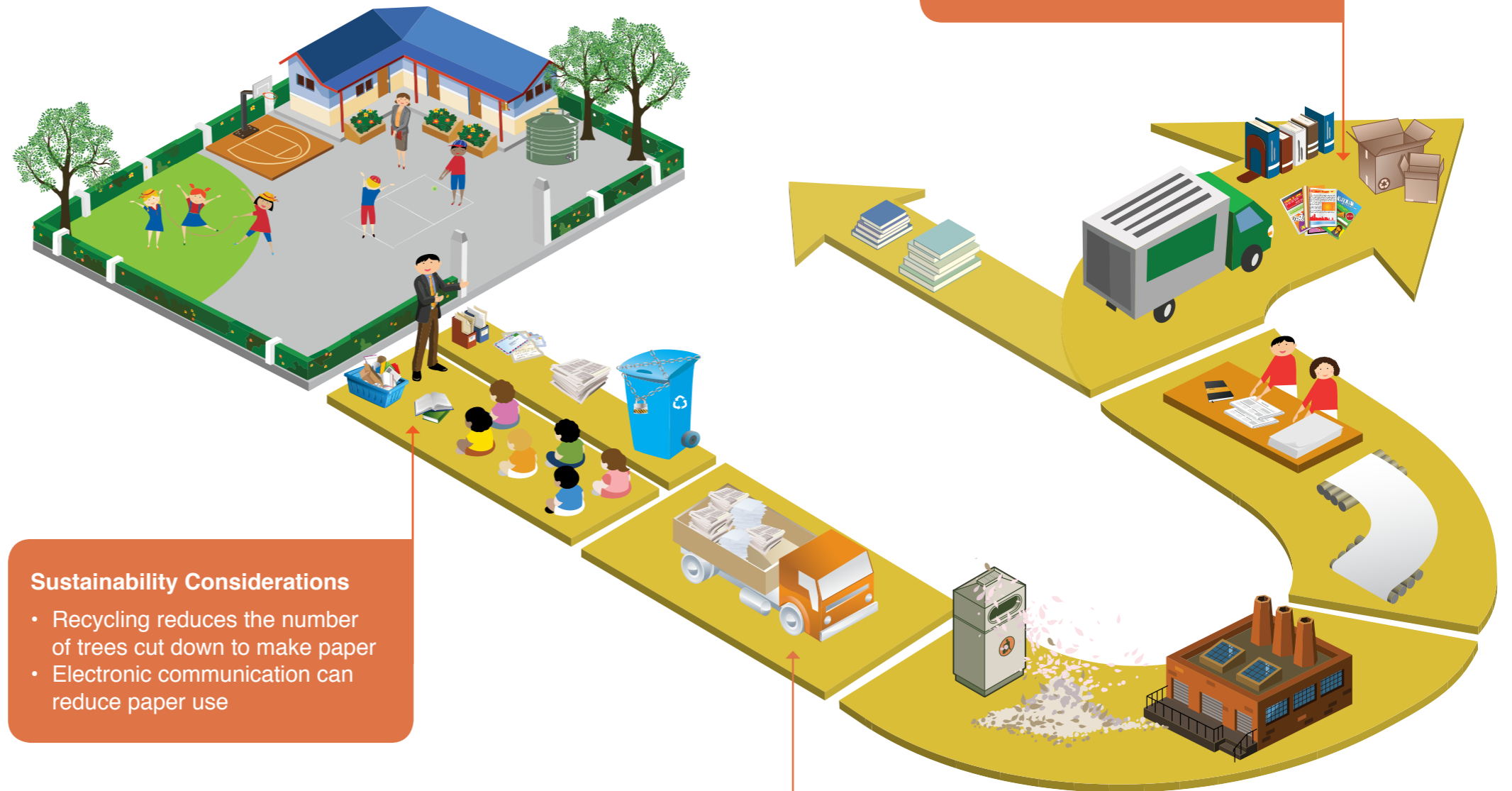
The paper sheet is squeezed through large rollers and wound into large rolls. The sheet is cut into smaller rolls then cut into the required size for use.

### 04 Distribution

Paper rolls and products are transported within Australia mainly by road.

### 05 Paper Use

There is a great variety of choice in paper types and products for purchase including paper products used in schools.



**Sustainability Considerations**

- Recycled fibres are used in all sorts of high quality paper products
- Demand for recycled content paper products promotes recycling

**Sustainability Considerations**

- Recycling reduces the number of trees cut down to make paper
- Electronic communication can reduce paper use

**Sustainability Considerations**

- It takes less energy, water, manufacturing and transport to recycle used paper, than it does to produce new paper