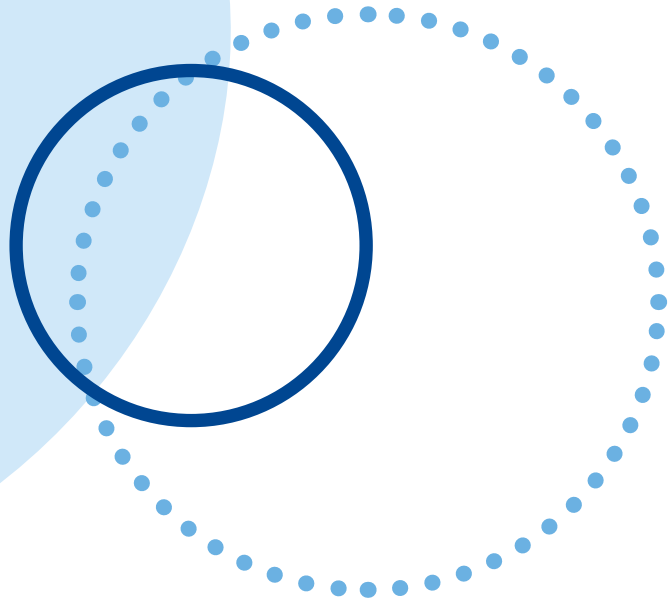




| Department of Education

FAQs for Year 5 to Year 7 transition – families

The Process for transition from primary school to high school



Q1. My child is currently in Year 5 in a support class. Why does the school want to talk about high school support options now?

The NSW Department of Education is committed to providing your child with a great experience as they transition from primary school to high school. Discussing your child's goals and support options early ensures that together we can start the process of transition to high school.

Q2. My child currently receives additional learning and support in their mainstream class, how do I find out more about their high school support options?

We encourage you to contact your child's primary school to discuss your child's goals and support options. Engaging early in conversations about high school strengthen transition programs and ensure the availability of support.

More information on transitioning from primary to high school for students with disability is [here](#).

Q3. How is the high school determined for my child?

Some high schools have support classes to cater for the additional learning and support needs of students with disability. Your child's primary school principal or learning and support team will assist you to find the right schooling option for your child, taking into account your choice, your child's specific additional learning needs and proximity to local specialist services.

Consideration for placement in a support class and/or special school (SSP) is managed through an Access Request application, which is submitted by your school. This Access Request is considered in Term 4 between weeks 4-6.

More information can be found using the resources below:

[Starting High School: A Family Guide](#)

[Moving into Year 7 in a NSW Government School in 2020.](#)

Q4. What is an Access Request?

An Access Request is an application submitted by your local school to apply for additional learning and support provisions for a student, above what is available within school resources.

Q5. What happens once the school submits the Access Request?

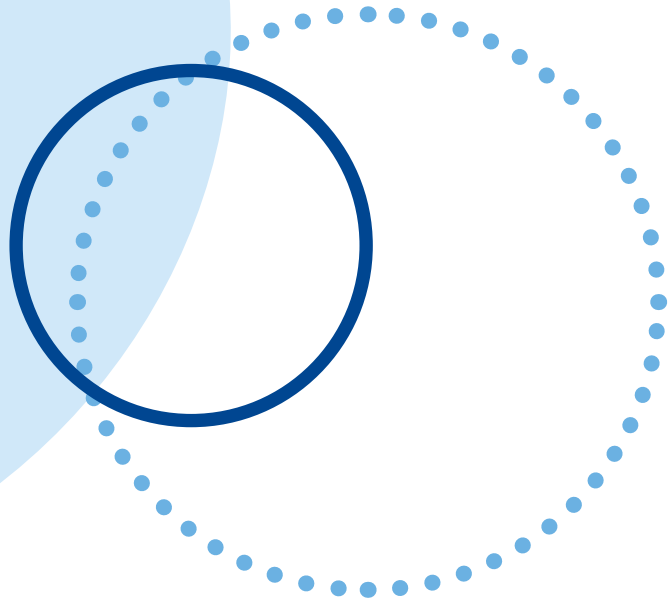
Requests for additional learning and support provisions are considered against the available resources within the local area of where your child lives. During the weeks following submission, the department will consider student Access Requests. This consideration includes the types of support classes available locally and any changes required to meet local needs.

Q6. When will families be notified about their child's Year 7 support class application outcome?

Notification for Access Requests considered at the Term 4, Year 5 to 7 transition placement panel will be sent to families and schools as soon as possible but no later than Week 2, Term 2, of the following year.

The outcome will support your family in knowing earlier what high school support options are available for your child and the school is well placed to personalise their learning and support needs and required adjustments.

Applying for consideration for a specialist support provision



Q1. My child is in Year 5 and is supported through Integration Funding Support. I would like my child considered for a support class for high school. What do I have to do?

The department provides a range of enrolment and support options for children with disability or special learning needs. This includes additional support for children in their local school as well as specialist support classes located in some regular schools and in special school (SSPs).

Contact your child's school to arrange a time to discuss schooling options available for your child. You may need to provide an assessment and/or diagnosis from your specialist health care provider to confirm your child's eligibility for a support class placement. If appropriate, the school may submit an Access Request for consideration for a specialist support provision by the local placement panel.

Q2. What support options are available in high school for students with disability?

The department provides a range of enrolment and support options for children with disability and special learning needs. This includes additional support for children in their local school as well as specialist support classes located in some regular schools and in special schools (SSPs).

Contact your child's primary school to arrange a time to discuss schooling options available for your child. The school learning and support team in consultation with you, will review all high school support options to inform the most appropriate action.

More information is also available on the website [here](#).

Q3. My child is already in a special school (SSP). Will this affect me?

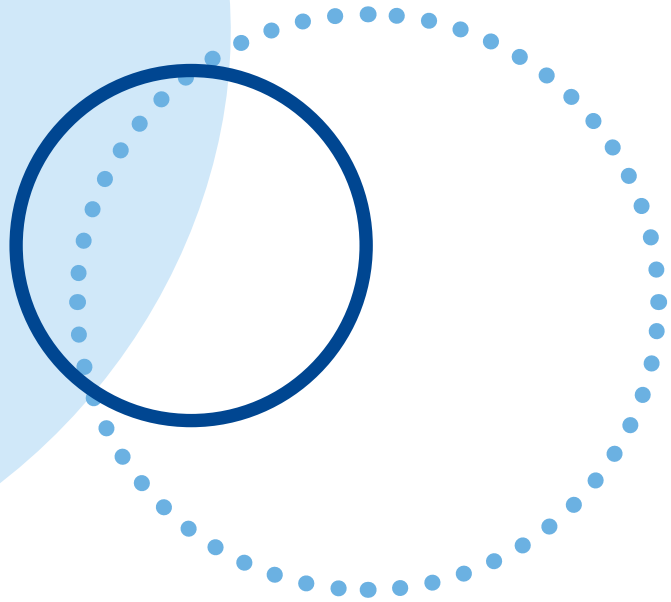
If the school is a kindergarten to Year 12 class, your child's enrolment will continue at their current school and there is no need for your child's school to submit a new Access Request. If you are unsure please contact your child's school to discuss your particular circumstances.

Q4. What happens if my child is in Year 5 and we have already had their annual review meeting this year?

To ensure you are able to take advantage of early placement notification, your child's primary school will contact you to discuss the new timeline for submitting Access Requests for Year 7 support classes in mainstream schools and special schools (SSPs).

The school learning and support team in consultation with you, will review all high school support options to inform the most appropriate action. Following this discussion, your school may submit an Access Request for consideration at the Term 4, Year 5 to 7 placement panel.

Managing changes to my child's circumstances



Q1. What happens if I change my mind about the Year 7 support class I have accepted for my child?

You are able to change your mind regarding your placement, however, you'll need to advise your child's primary school of your wishes.

A meeting with a learning and support team representative may be organised by your child's primary school for you to discuss all schooling options. A new application submitted by your primary school may be considered at the next placement panel if appropriate.

Q2. I have already accepted a Year 7 support class placement offer for my child but we are moving out of the area. I would like to apply for a Year 7 support class at our new location.

You should advise your current school of your intended move as soon as possible. The school will work with School Services to determine what the most appropriate action is. Please note that if you move areas the same support class or special school placement cannot be guaranteed.

The school learning and support team will, in consultation with you, review all schooling options to inform the most appropriate next steps and how best to support your child.

Q3. My child is not enrolled at a NSW public school. How do I apply for my child to be considered for a support class in Year 7 2021?


The department provides a range of enrolment and support options for children with disability or special learning needs. This includes additional support for children in their local school as well as specialist support classes located in some regular schools and in special schools (SSP).

Contact your local public school. The [school locator tool](#) is helpful to determine your local primary school.

Once your local public school is identified you'll need to discuss additional support with the school. If required the school will submit an Access Request for consideration for specialist support provisions by the local placement panel.



Say hello

 @NSWDepartmentofEducation

 @NSWEducation

 @NSWEducation

© 2019 NSW Department of Education

GPO Box 33 Sydney NSW 2001 Australia

T 1300 679 332